

Fabrication of a micro-nano structure on steel surface and surface wetting

Song Luo, Qiongbin Zheng, Xiaohua Jie* and Liuyan Zhang,

School of Materials and Energy, Guangdong University of Technology, Guangzhou

510006, PR China

Supplementary Information

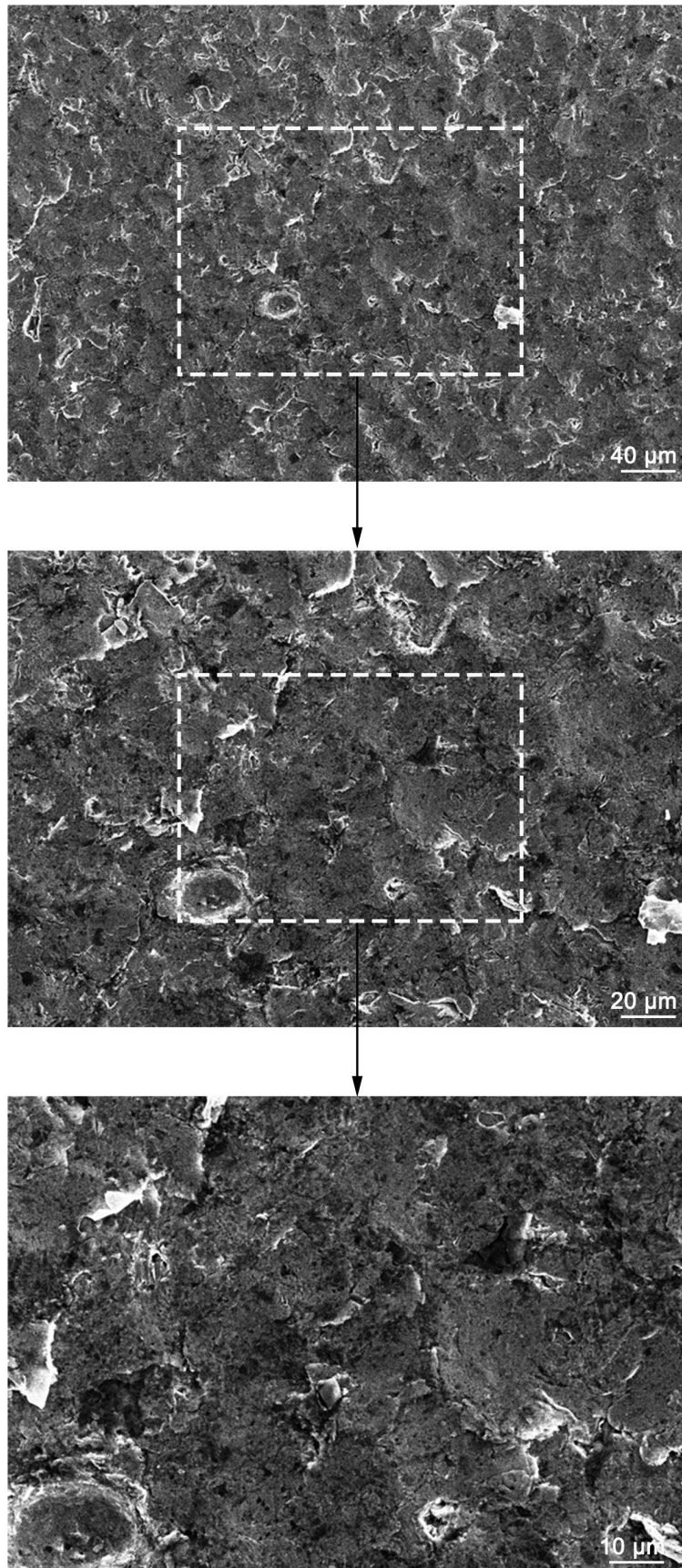


Fig. S1 SEM images of the concave-convex surface texture of the MSP-sample (peening pressure, 0.2 MPa).

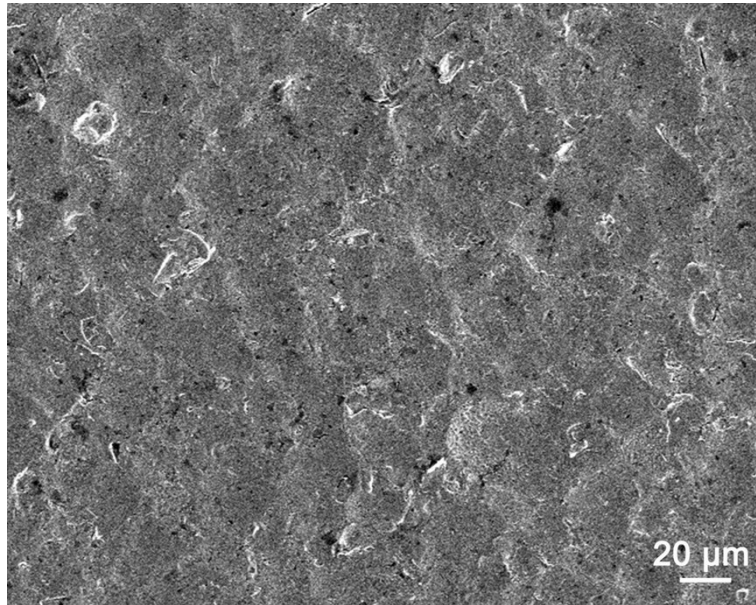


Fig. S2 SEM image of the concave-convex surface texture of the MSP-sample (peening pressure, 0.1 MPa).