

Supporting Information

Smart Flocculant with Temperature and pH Response Derived from Starch

Yu Wang^a, Yuling Shi^{a,b*}, Mengyao Xu^a, Liang Wu^a, Xin Jia^a, Tingting Wei^a, Shufen Zhang^c, Xuhong Guo^{a,b*}

^aEngineering Research Center of Materials Chemical Engineering of Xinjiang Bingtuan and Key Laboratory of Materials Chemical Engineering of Xinjiang Uygur Autonomous Region, Shihezi University, Shihezi 832000, China.

^bState Key Laboratory of Chemical Engineering, East China University of Science and Technology, Shanghai 200237, China

^cState Key Laboratory of Fine Chemicals, Dalian University of Technology, Dalian 116024, China

*To whom correspondence should be addressed. E-mail: shiyulin@shzu.edu.cn (Yuling Shi) and guoxuhong@ecust.edu.cn (Xuhong Guo)

Table S1 The degree of substitution and Elemental analysis of TPRS.

	C (%)	H (%)	N (%)	DS
1	46.45	7.57	11.59	0.4
2	46.60	7.08	14.69	0.6
3	46.38	6.85	20.85	1.2

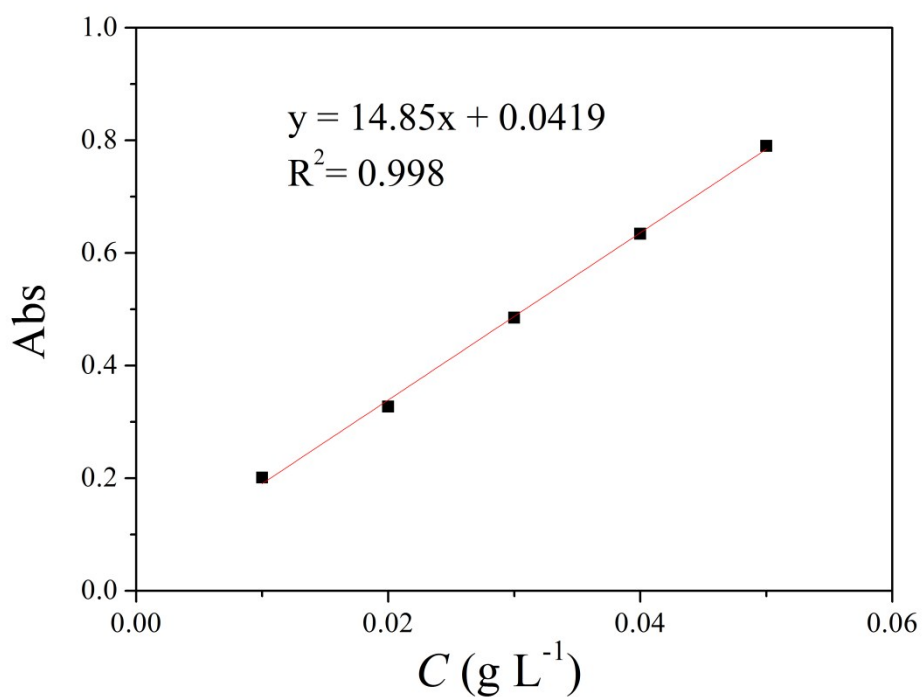


Fig. S1 Calibration curve of the AR SE.