

Supplementary data (figures and tables)

**Enduring protection provided by NMITLI118RT+ and its preparation NMITLI118RT+CFM
against ischemia/reperfusion injury in rats**

**Hafsa Ahmad^a, Sheeba Saji Samuel^b, Kiran Khandelwal^a, Abhishek Arya^a, Shivangi Tripathi^a,
Satish Agrawal^a, Neelam Singh Sanghwan^c, Rakesh Shukla^b and Anil Kumar Dwivedi^{a*}**

^aDivision of Pharmaceutics, Central Drug Research Institute, Lucknow, INDIA

^b Division of Pharmacology, Central Drug Research Institute , Lucknow, INDIA

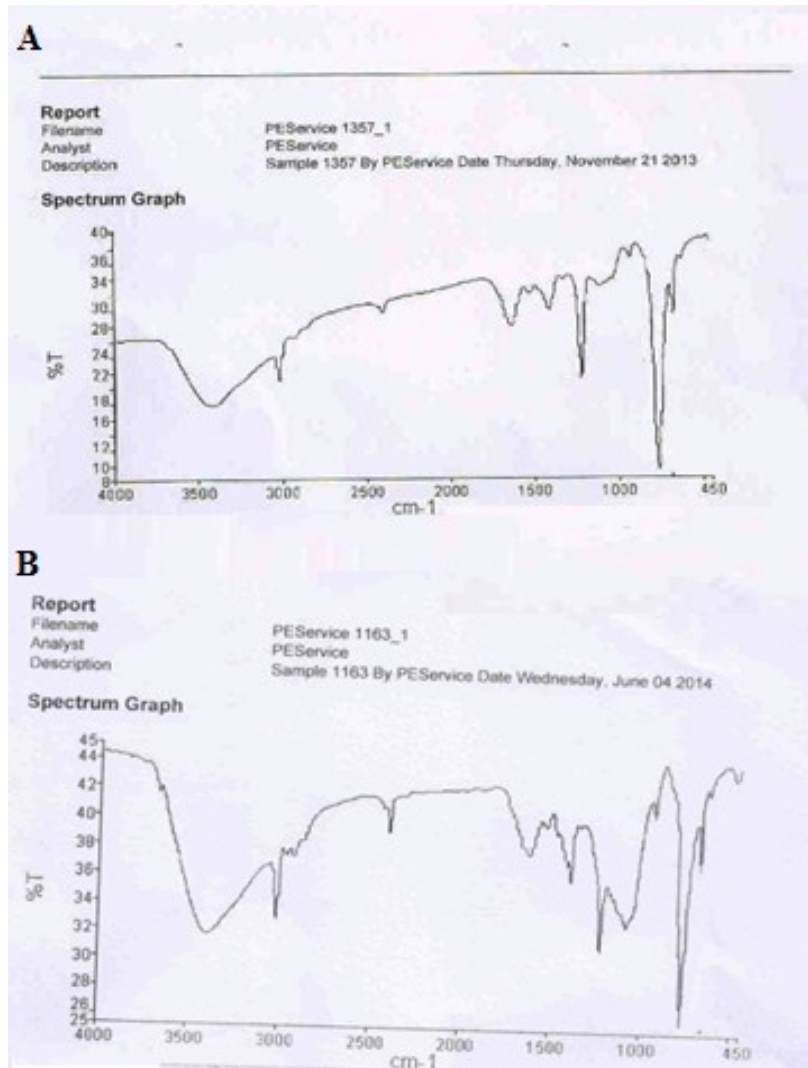
^c Department of Metabolic and Structural Biology, Central Institute of Medicinal and Aromatic Plants,
Lucknow, INDIA

*Corresponding Author: Dr. A.K. Dwivedi, Division of Pharmaceutics, Central Drug Research Institute, BS 10/1, Sector
10, Jankipuram Extension, Sitapur Road, Lucknow-226031, INDIA.

Email: anilcdri@gmail.com Contact No.: +91-9415910144

CDRI manuscript No: 239/2015/AKD

Running Title: Benefits of NMITLI118RT+CFM in ischemia reperfusion brain injury



SF 1: FT-IR spectra of (A) NMITLI118RT+ (B) NMITLI118RT+CFM

ST 1: Flow Properties of NMITLI118RT+CFM

Parameter	Values
Bulk density	0.167 ± 0.54
Tap density	0.20 ± 0.25
Carr's compressibility Index	16.5 ± 0.83
Hausner's ratio	1.20 ± 0.36
Angle of repose	34.68 ± 1.19

Values are expressed **mean ± SD**; (n=3)

ST 2: Weight Variation Test (USP)

S. No	Weight in mg	% deviation	
1	372.6	-1.90	
2	378.7	-3.56	
3	372.9	-1.90	
4	371.4	-1.50	
5	370.6	-1.30	
6	365.1	0.15	
7	359.1	1.79	
8	365.8	-0.04	
9	369.1	-0.9	
10	365.1	0.15	
11	362.0	0.99	
12	374.4	-2.30	
13	370.0	-1.18	
14	366.5	-0.23	
15	367.0	-0.36	
16	359.0	1.80	
17	358.0	2.09	
18	353.7	3.20	
19	361.6	1.10	
20	350.4	4.17	

Average weight of 20 capsules

Average weight = $7313/20 = 365.65$ mg

Lower test limit (90% of average) USP

weight variation

90% of Average weight = 329.085 mg

Upper test limit (110% of average) USP

weight variation

110% of Average weight = 402.215 mg

ST 3: Content Uniformity Test (USP)

Mean Conc. Found (Average of 10 capsules)

Mean conc. = 2.845 ± 0.210

S. No
Conc. ($\mu\text{g}/\text{mg}$) of
Withanolide A

Conc. Of Withanolide A found in NMITLI118RT+

= $6.440 \mu\text{g}/\text{mg}$

1 2.613

2 3.158

3 2.829

4 2.740

5 2.802

6 2.604

7 2.857

8 2.821

9 2.774

10 3.259

Desired Potency Value for a capsule where 1g fill material

contains 430 mg NMITLI118RT+

= $6.440 \times 430 / 1000 = 2.769$

Potency Range (for 9 capsules assayed)

85%-----2.353

115%---3.184

Potency Range (for 10th capsule assayed)

75%-----2.0769

125%---3.461