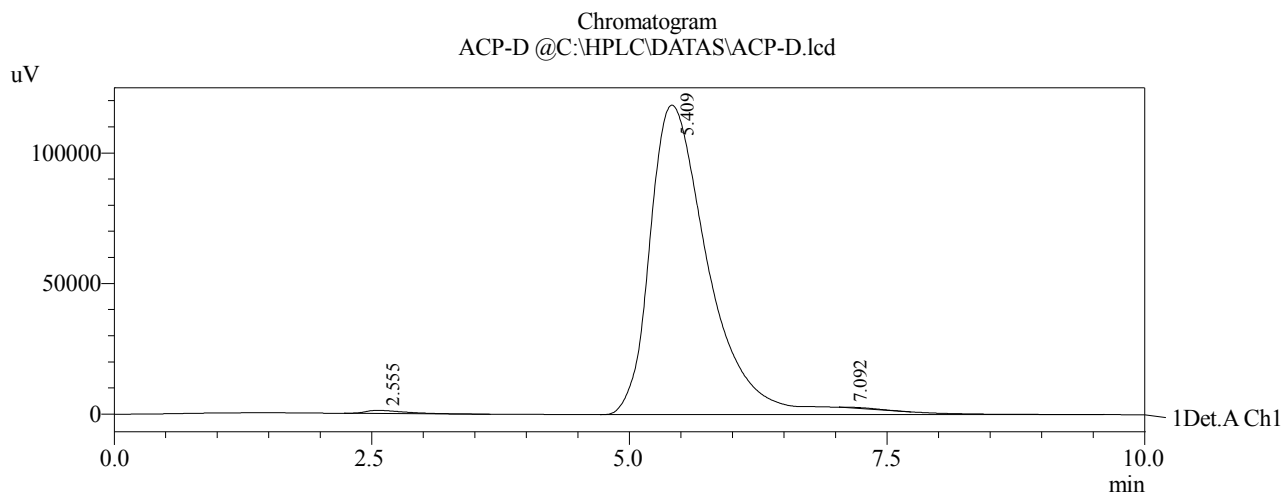


PeakTable

Detector A Ch1 254nm

Peak#	Ret. Time	Area	Height	Area %	Height %
1	0.843	30150	793	0.302	0.217
2	1.348	37205	933	0.373	0.256
3	3.135	54501	1949	0.546	0.534
4	3.779	9828940	360091	98.447	98.746
5	8.296	19829	426	0.199	0.117
6	8.833	13325	474	0.133	0.130
Total		9983949	364666	100.000	100.000

**HPLC –Chromatogram of acetophenone**



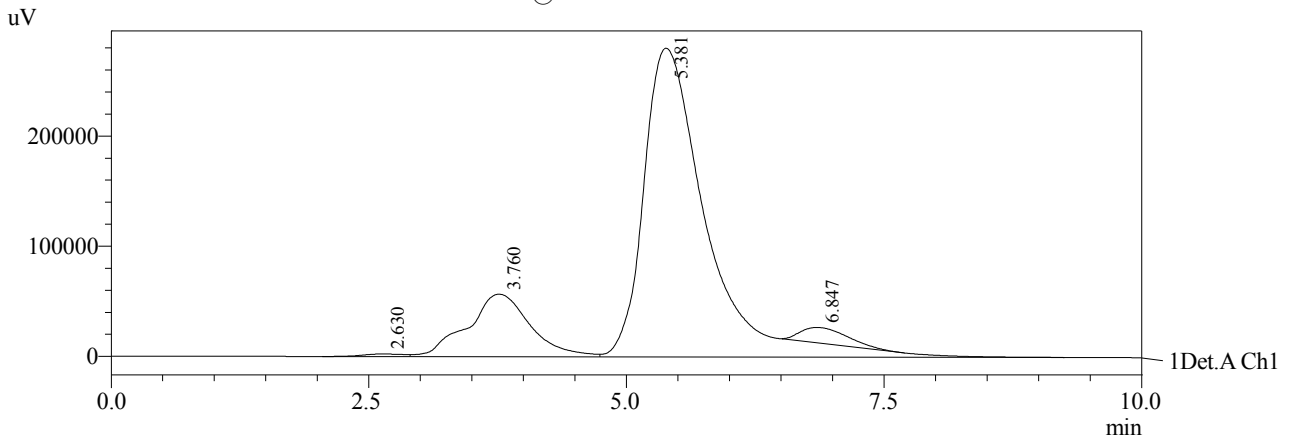
PeakTable

Detector A Ch1 254nm

Peak#	Ret. Time	Area	Height	Area %	Height %
1	2.555	32561	1186	0.680	0.990
2	5.409	4748057	118486	99.172	98.885
3	7.092	7104	149	0.148	0.125
Total		4787722	119822	100.000	100.000

**HPLC –Chromatogram of phenacyl bromide**

Chromatogram  
2-ACP-H11- @C:\HPLC\DATAS\2-ACP-H11-.lcd



1 Det.A Ch1 / 254nm

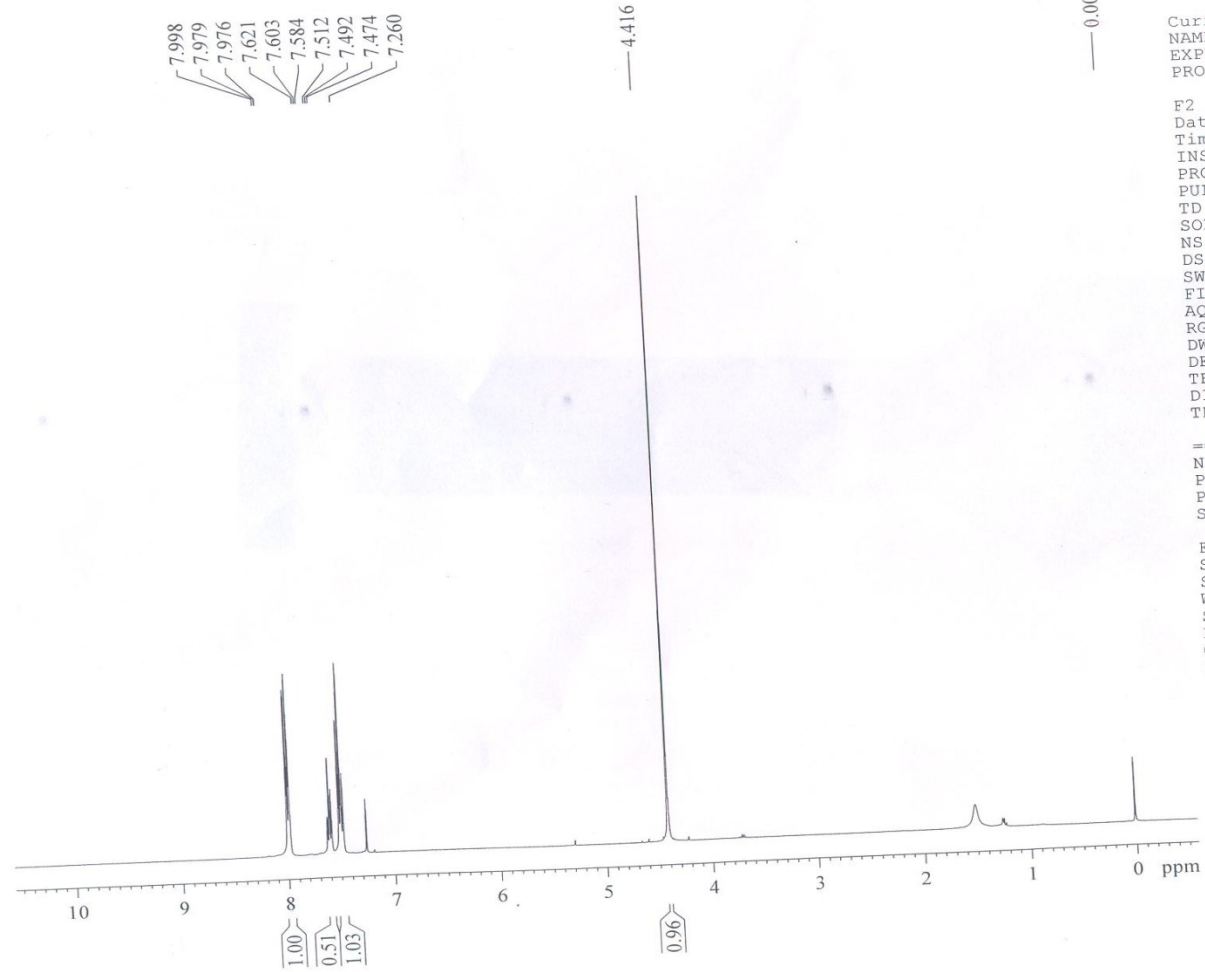
PeakTable

Detector A Ch1 254nm

Peak#	Ret. Time	Area	Height	Area %	Height %
1	2.630	35950	1621	0.242	0.459
2	3.760	2746334	62414	18.498	18.270
3	5.381	11920830	280288	80.201	79.335
4	6.847	160488	8973	1.059	1.936
Total		14863602	353296	100.000	100.000

**HPLC –Chromatogram of reaction mixture**

PROTON CDCl3 {D:\bio} KOPAL 1



Current Data Parameters  
NAME ACPH-Br  
EXPNO 1  
PROCNO 1

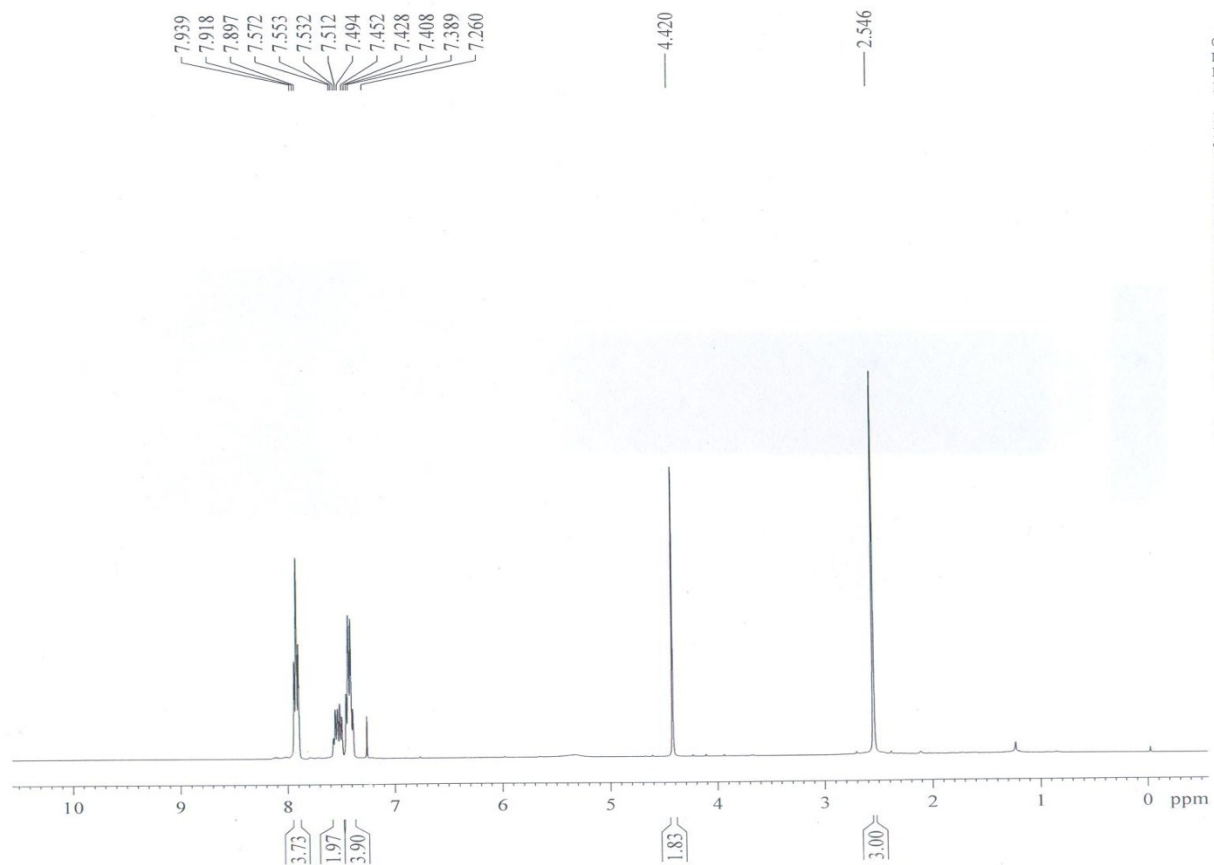
F2 - Acquisition Parameters  
Date\_ 20150130  
Time 14.22  
INSTRUM spect  
PROBHD 5 mm DUL 13C-1  
PULPROG zg30  
TD 65536  
SOLVENT CDCl3  
NS 16  
DS 2  
SWH 8223.685 Hz  
FIDRES 0.125483 Hz  
AQ 3.9846387 sec  
RG 228  
DW 60.800 usec  
DE 6.00 usec  
TE 295.8 K  
D1 1.00000000 sec  
TDO 1

==== CHANNEL f1 =====  
NUC1 1H  
P1 11.42 usec  
PL1 -3.00 dB  
SFO1 400.1324710 MHz

F2 - Processing parameters  
SI 32768  
SF 400.1300049 MHz  
WDW EM  
SSB 0  
LB 0.30 Hz  
GB 0  
PC 1.00

**<sup>1</sup>H NMR spectra of separated phenacyl bromide product**

PROTON CDC13 {D:\BIOINFO} KOPAL 1



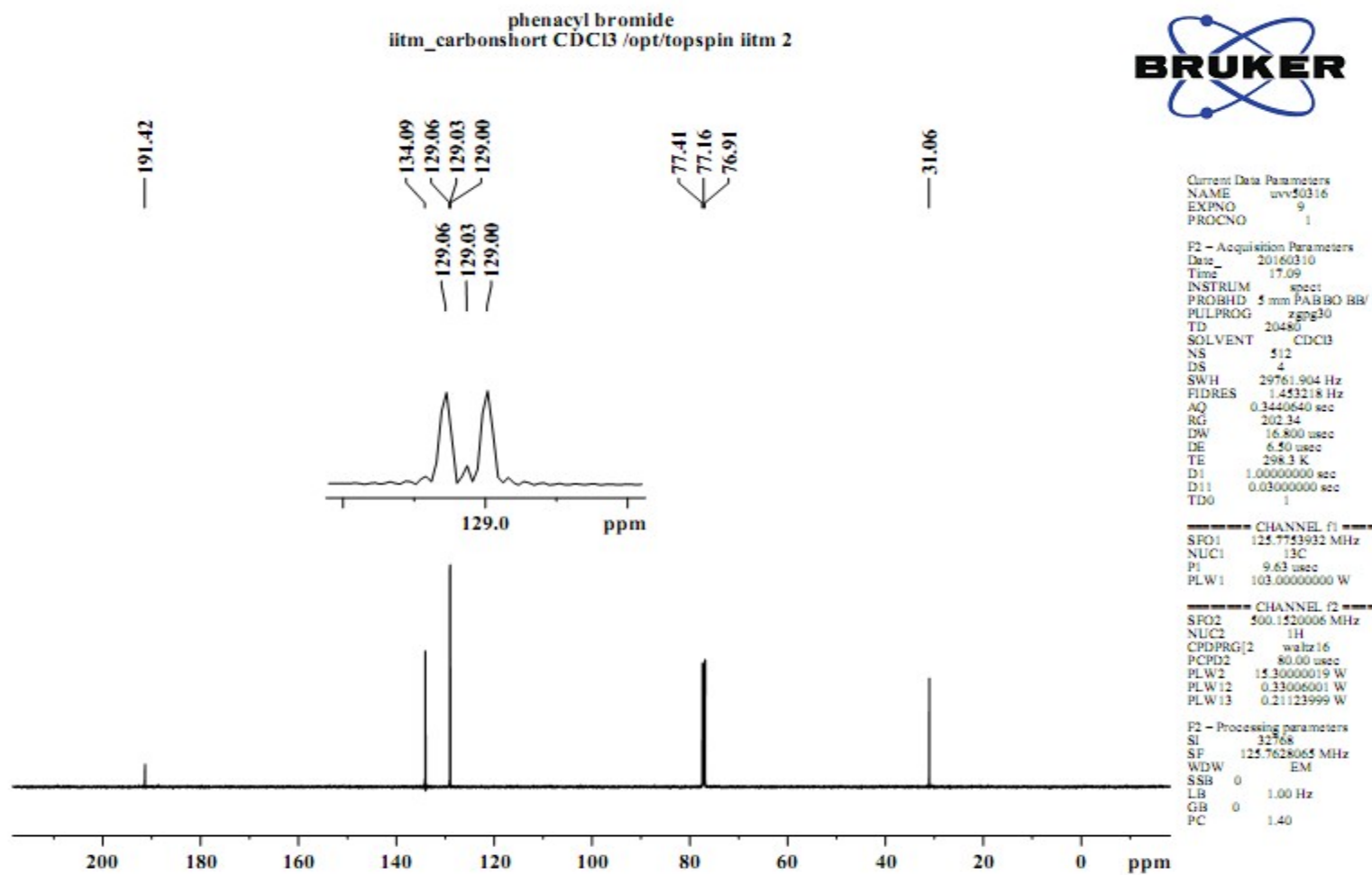
Current Data Parameters  
NAME BIC-1  
EXPNO 1  
PROCNO 1

F2 - Acquisition Parameters  
Date\_ 20150113  
Time 14.15  
INSTRUM spect  
PROBHD 5 mm DUL 13C-1  
PULPROG zg30  
TD 65536  
SOLVENT CDC13  
NS 16  
DS 2  
SWH 8223.685 Hz  
FIDRES 0.125483 Hz  
AQ 3.9846387 sec  
RG 36  
DW 60.800 usec  
DE 6.00 usec  
TE 295.2 K  
D1 1.00000000 sec  
TDO 1

----- CHANNEL f1 -----  
NUC1 1H  
P1 11.42 usec  
PL1 -3.00 dB  
SFO1 400.1324710 MHz

F2 - Processing parameters  
SI 32768  
SF 400.1300045 MHz  
WDW EM  
SSB 0  
LB 0.30 Hz  
GB 0  
PC 1.00

**<sup>1</sup>H NMR spectra of crude sample**



<sup>13</sup>C NMR spectra of separated phenacyl bromide product