

On-Line Supporting Information

Single Nanoparticle Plasmonic Spectroscopy for Study of Efflux Function of Multidrug ABC Membrane Transporters of Single Live Cells

Lauren M. Browning,¹ Kerry J. Lee,¹ Pavan K. Cherukuri,¹ Prakash D. Nallathamby,¹ Seth Warren,¹ Jean-Michel Jault,² and Xiao-Hong Nancy Xu*¹

¹*Department of Chemistry and Biochemistry, Old Dominion University, Norfolk, VA 23529, USA*

²*UMR5086 CNRS/UCBLyon I, MMSB-IBCP, 7 Passage du Vercors 69367 Lyon cedex 07,
France*

* To whom correspondence should be addressed: Email: xhxu@odu.edu; www.odu.edu/sci/xu/xu.htm; Tel/fax: (757) 683-5698

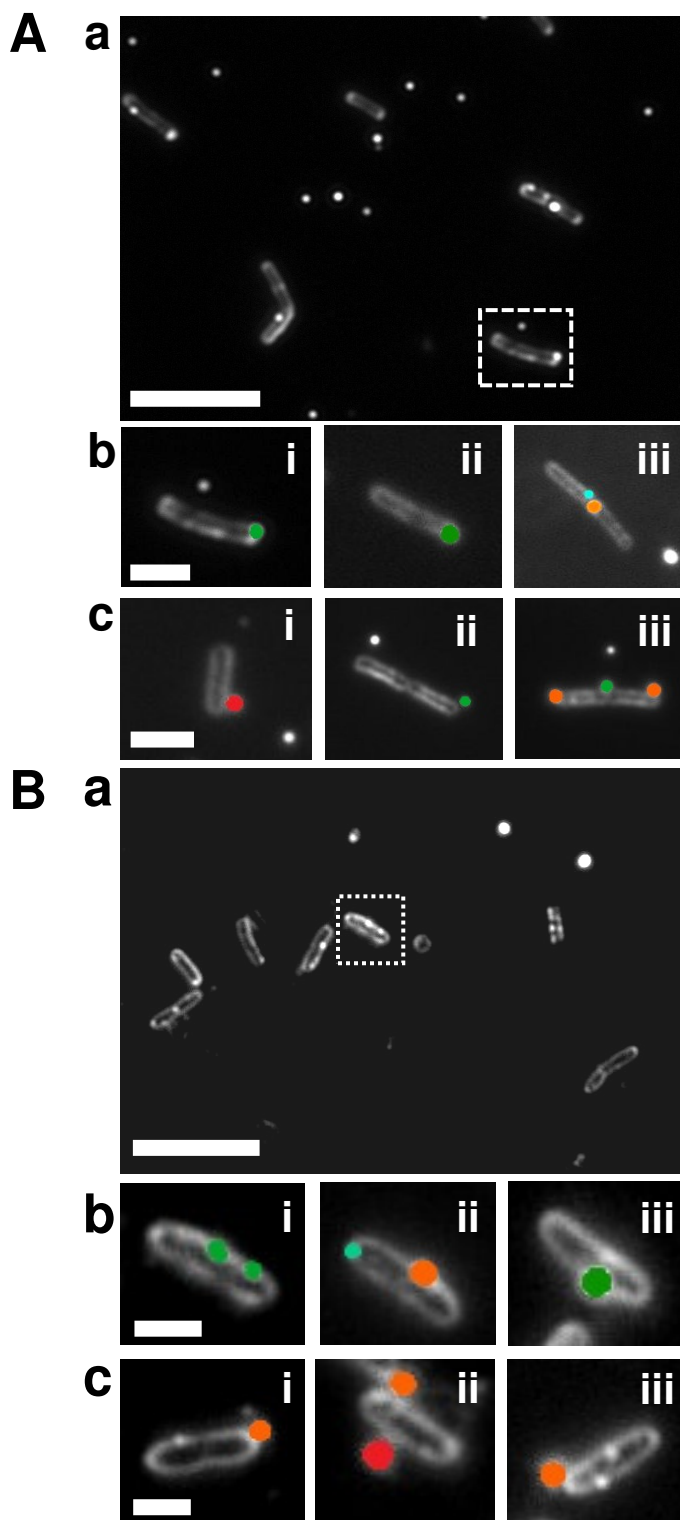


Figure S1: Imaging of single intracellular and extracellular Ag NPs in single live cells using DFOMS. **(A)** Ct-BmrA-EGFP and **(B)** Δ BmrA cells incubated with 3.7 pM Ag NPs: **(a)** representative images of individual cells and **(b-c)** Zoomed-in images of single cells show (b) intracellular and (c) extracellular NPs. The plasmonic colors of the NPs in (b-c) were characterized using their LSPR spectra and their pseudo colors were added into the images based upon their spectra. The scale bar is 6 μ m in (A) and 2 μ m in (B).