

Electronic supplementary information

Facile hydrothermal synthesis and improved photocatalytic activities of Zn²⁺ doped Bi₂MoO₆ nanosheets

Xiang-Biao Zhang^a, Lei Zhang^{*b,c}, Jin-Song Hu^a and Xin-Hua Huang^{*b}

Table S1 The calculated cell parameters of pure Bi₂MoO₆ (S1) and doped Bi₂MoO₆ samples with different Zn²⁺ content (S2, S3 and S4).

Samples	The cell parameters		
	a (Å)	b (Å)	c (Å)
S1	5.4958	16.2376	5.4883
S2	5.4866	16.1982	5.4773
S3	5.4729	16.1331	5.4609
S4	5.4697	16.0292	5.4416

^aSchool of Chemical Engineering, Anhui University of Science and Technology, Huainan 232001, P. R. China

^bLaboratory of Multiscale Materials and Molecular Catalysis, School of Materials Science and Engineering, Anhui University of Science and Technology, Huainan, Anhui 232001, P. R. China

^c State Key Laboratory of Coordination Chemistry, School of Chemistry and Chemical Engineering, Nanjing University, Nanjing 210093, P. R. China

E-mail: yutian1224@126.com; hxb0317@hotmail.com

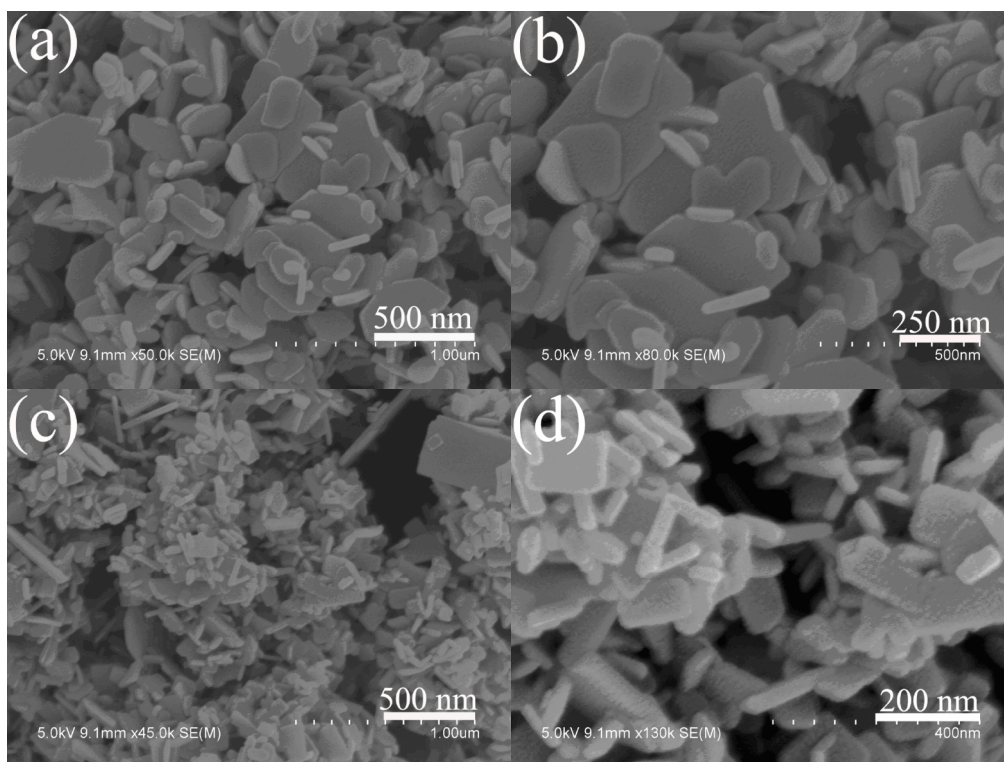


Fig. S1 SEM images of doped Bi_2MoO_6 samples with different Zn^{2+} content prepared at $180\text{ }^\circ\text{C}$ for 24 h: (a, b) S2 and (c, d) S4.

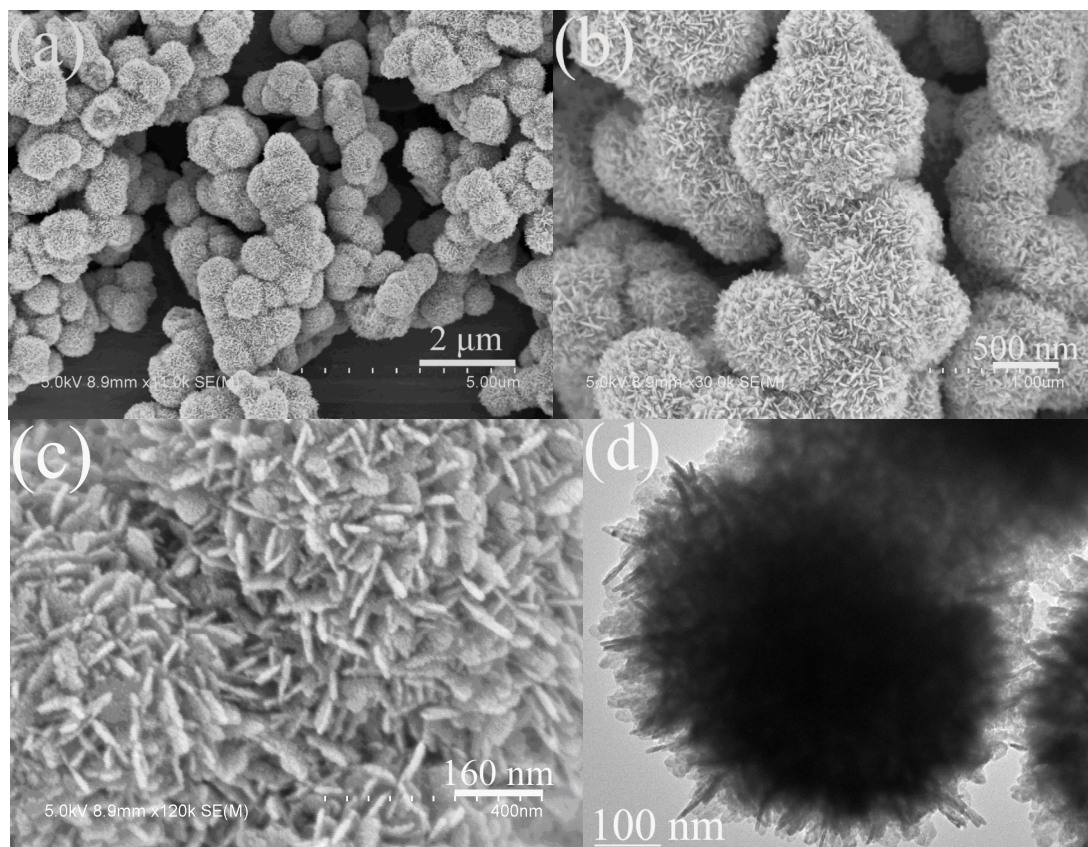


Fig. S2 SEM (a-c) and TEM images (d) of the as-obtained pure Bi_2MoO_6 sample (S1).

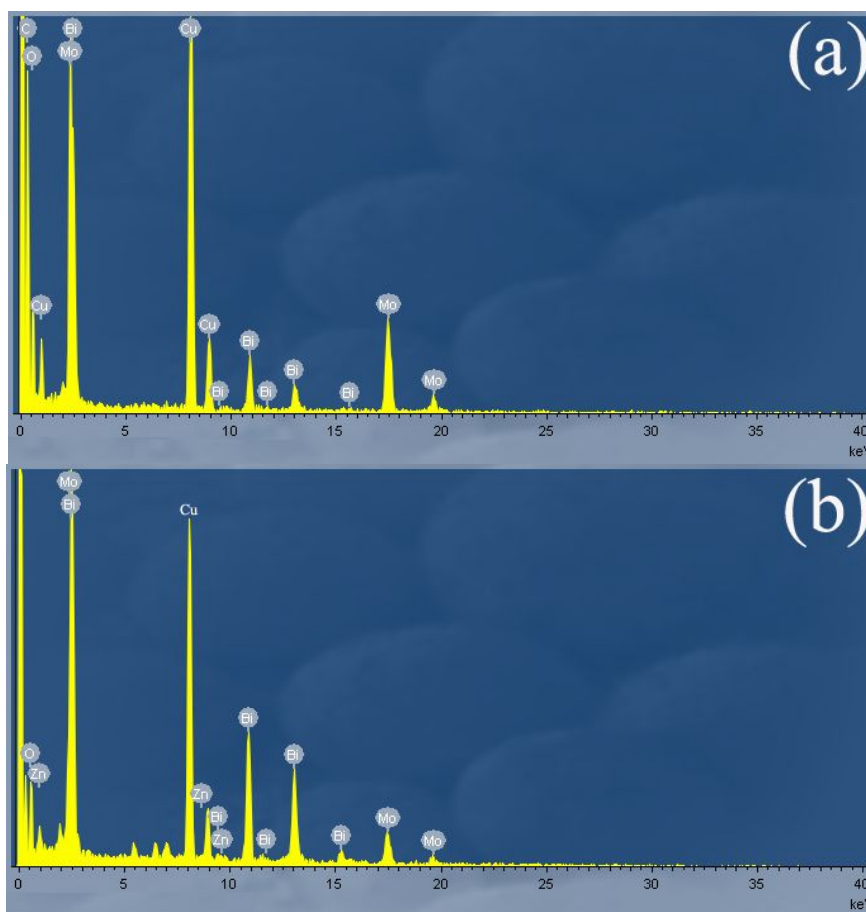


Fig. S3 EDS spectra of pure Bi_2MoO_6 (S1: a) and doped Bi_2MoO_6 samples (S3: b).