

Supplementary figures

Figure S1

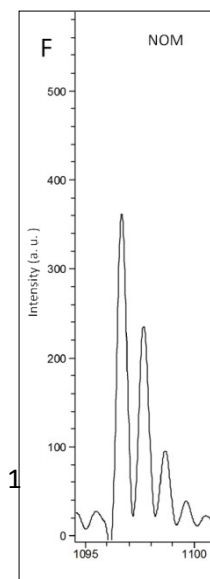
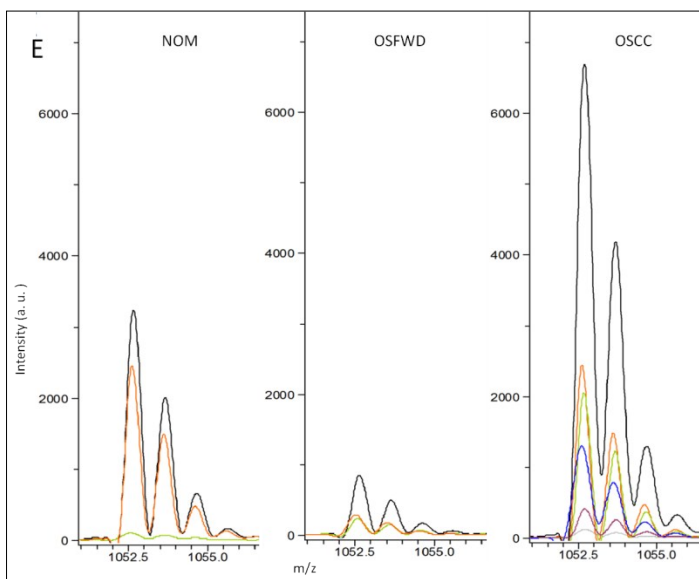
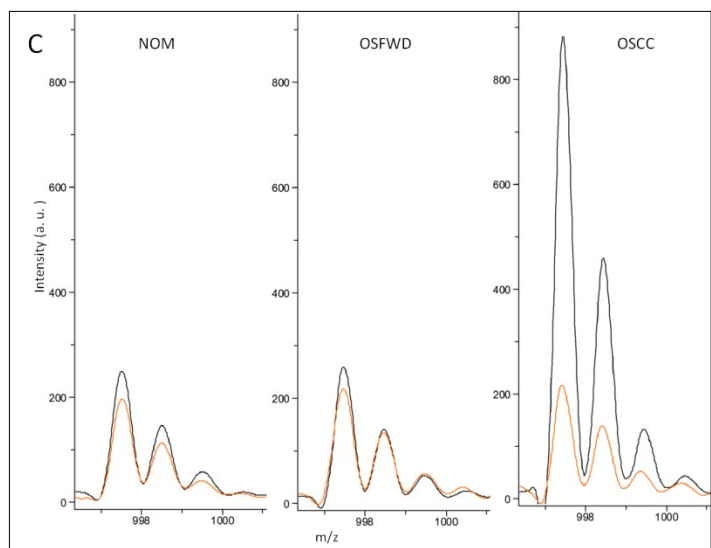
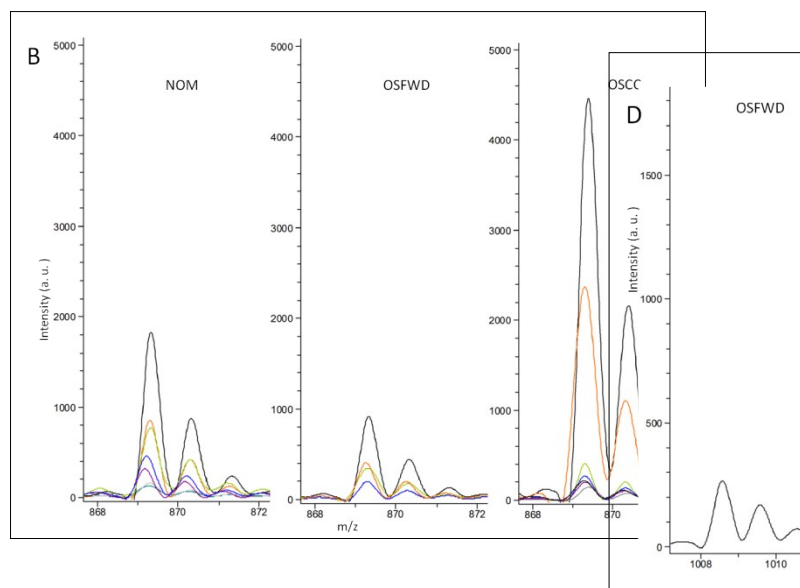
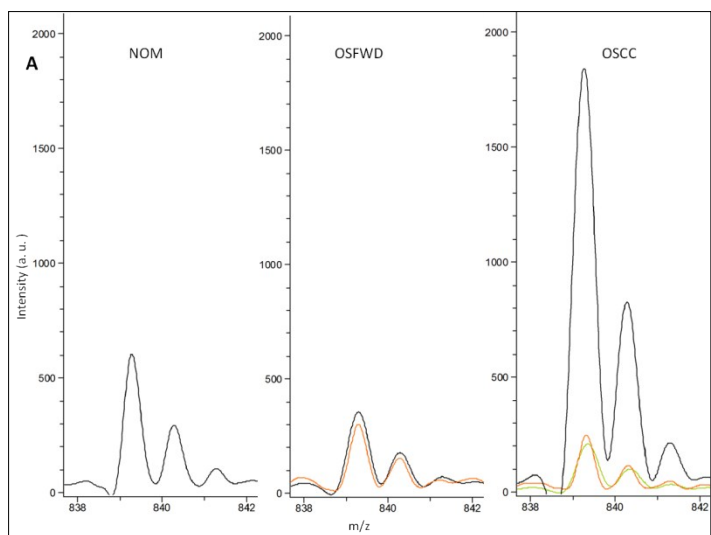
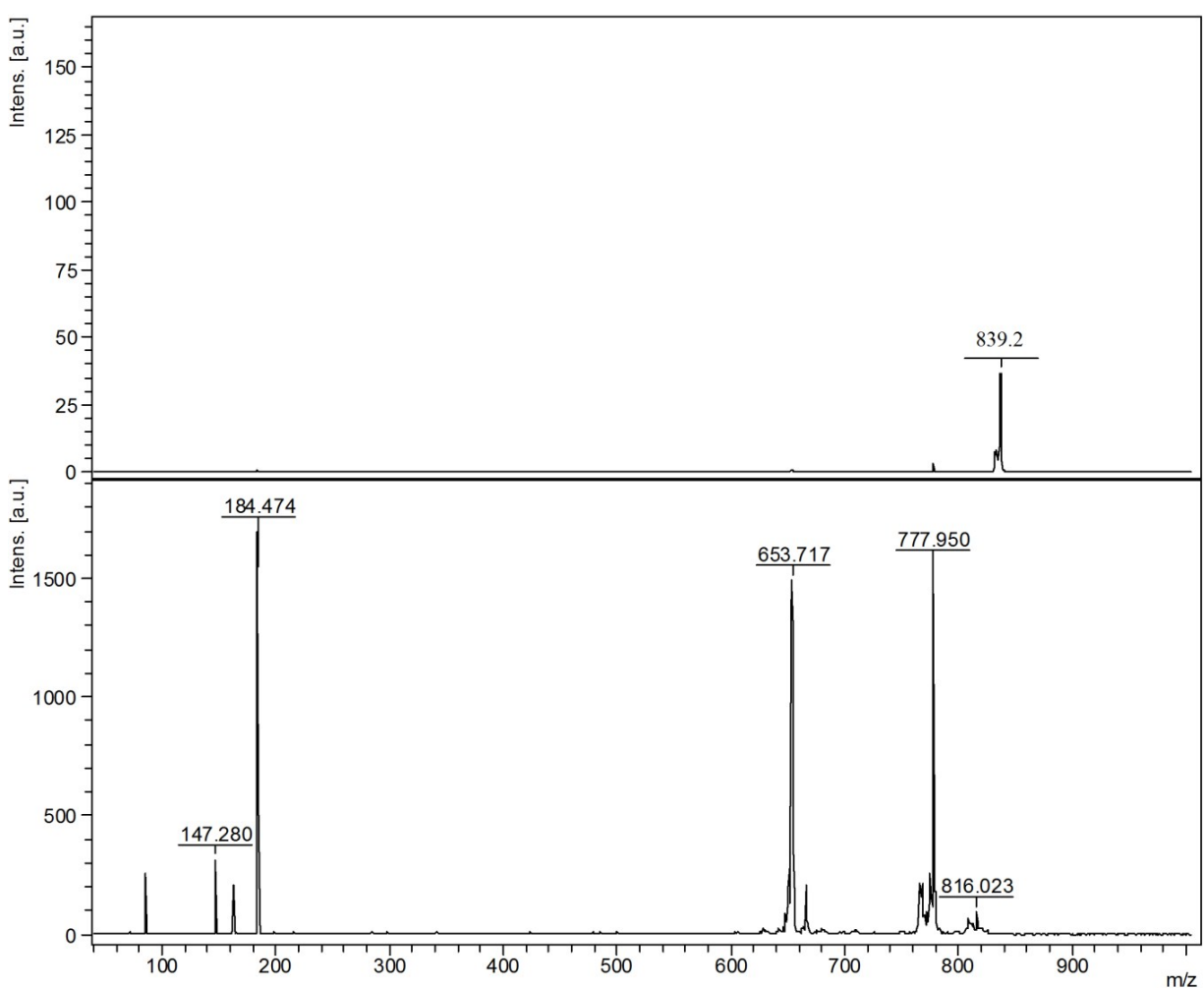
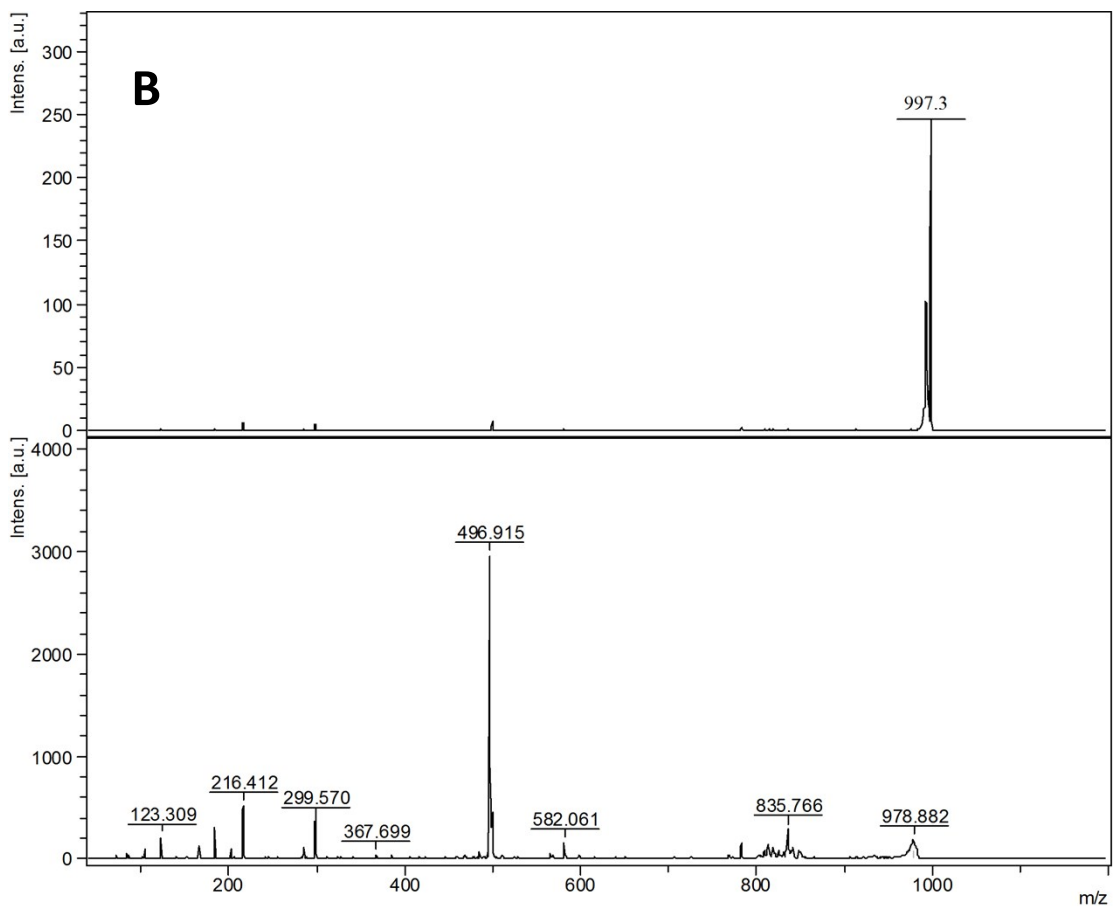
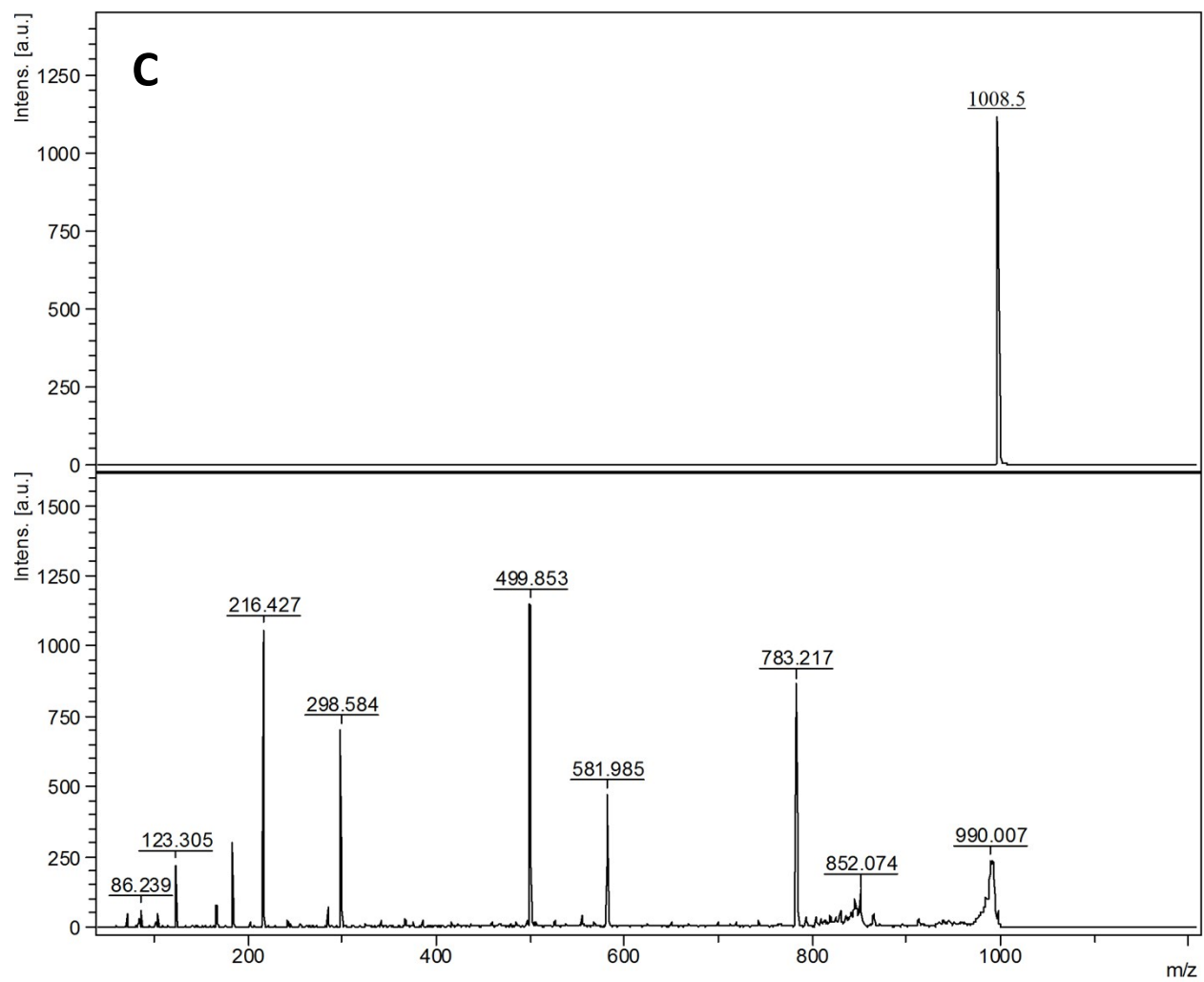


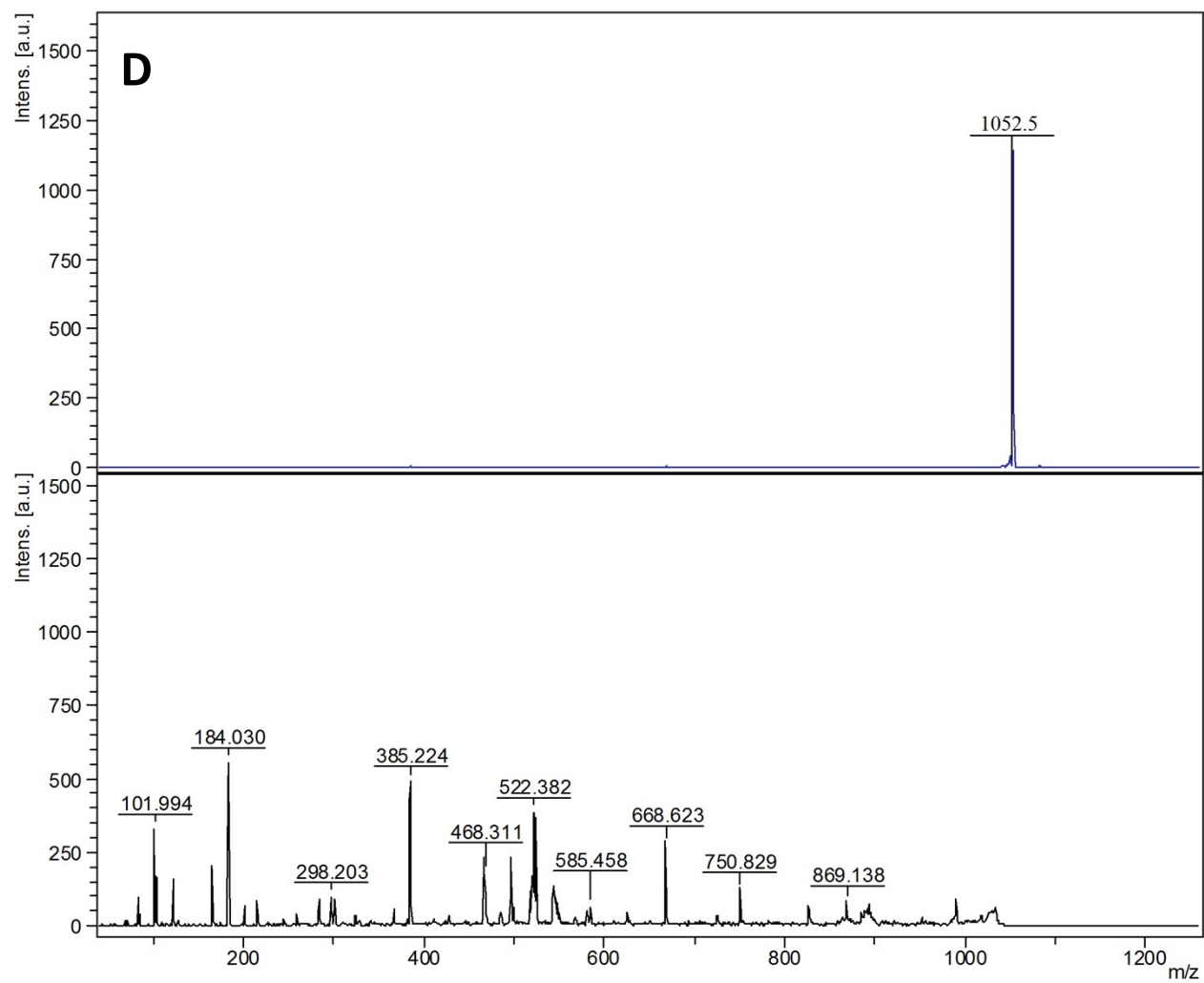
Figure S1 Overlapped MS spectra of PI (A), TG (B), PIP2 (C), CDP-DAG (D), Timnodonyl CoA (E), 3-Oxo-docosa-7,10,13,16-all-cis-tetraenoyl-CoA (F) with isotopic distributions obtained from eluted fraction spots showing variation of AUCs in three conditions: normal (NOM), pre-cancer (OSF) and cancer (OSCC).

Figure S2









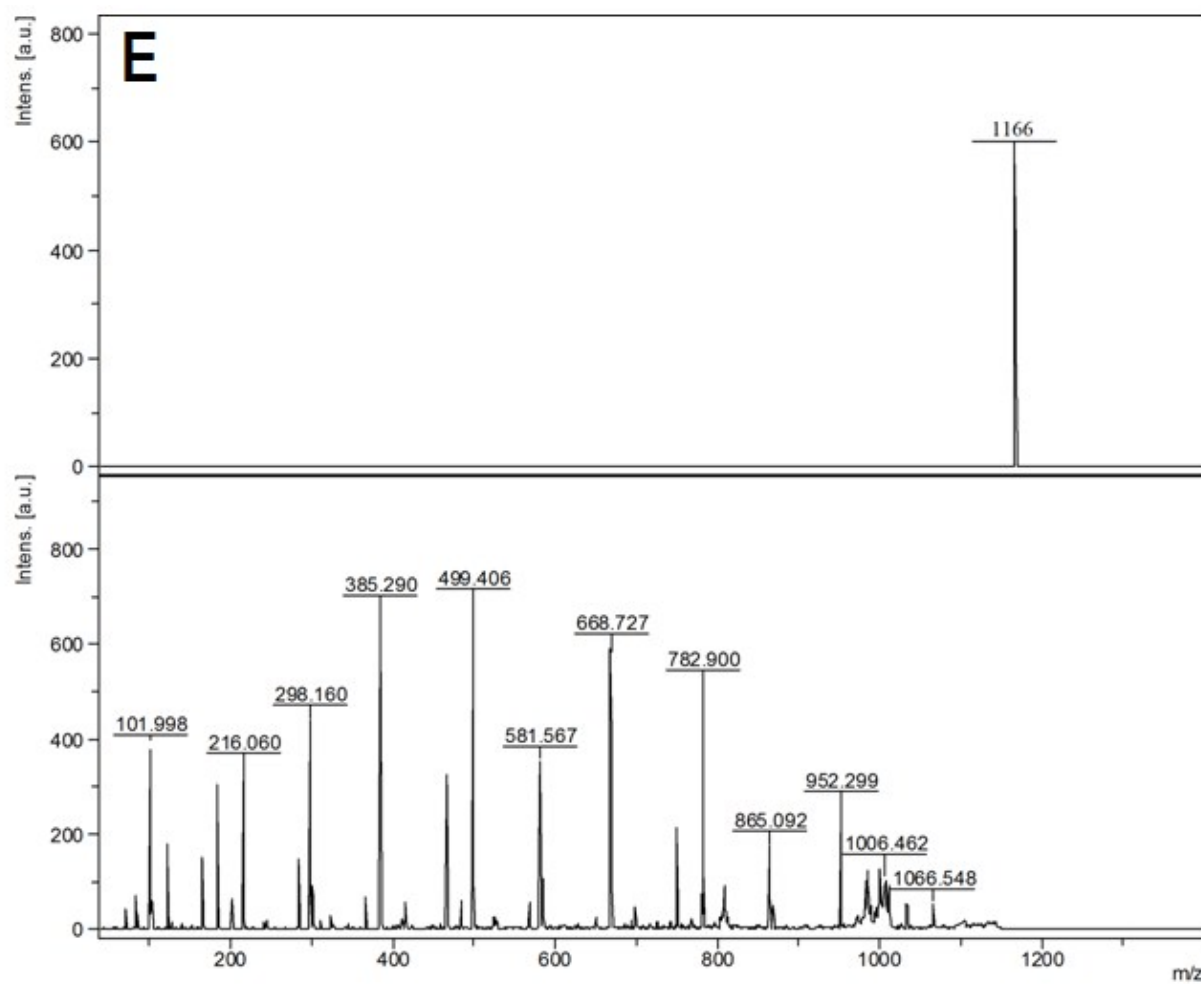


Figure S2 MS/MS fragmentation (lower panel) of separated metabolites along with their parent peaks (upper panel) such as PI (A), PIP2 (B), CDP-DAG (C), Timnodonyl CoA (D), Ganglioside (E).