

## SUPPLEMENTARY DATA

Table S1. Primers used in this study

genes	primers (5'-3')
VEGF-A	CGAACGTACTTGCAGATGTG (F)
	CTGTTCTGTCGATGGTGATG (R)
HIF-1 $\alpha$	TTTGGCAGCAACGACA (F)
	AGCGGTGGGTAATGGA (R)
Tubulin	CCCGTCTTCAGGGTCTCTTG (F)
	TTAAGGTAAGTGTAGGTTG (R)
HIF-1 $\alpha$ (ChIP)	CAGGAACAAGGGCCTCTGTCT (F)
	TGTCCCTCTGACAATGTGCCATC (R)

Figure S1

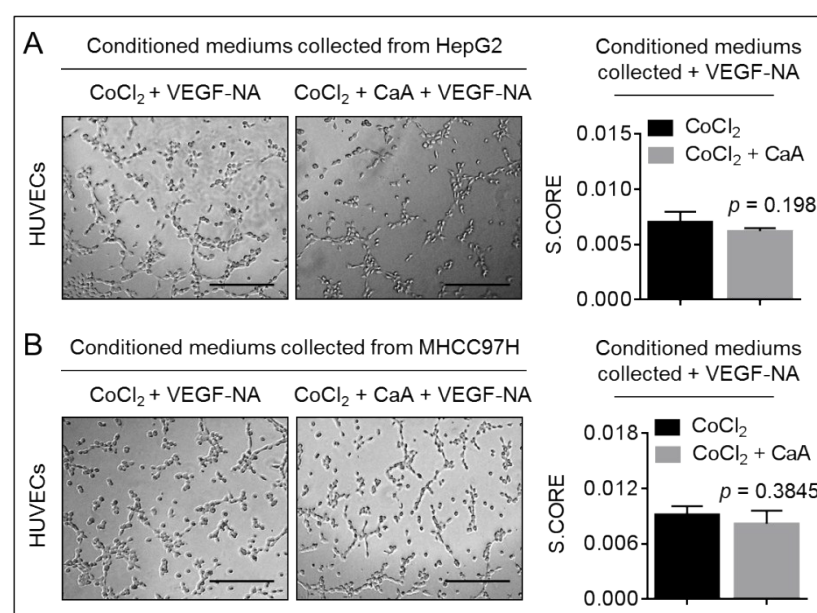


Figure S1. HUVECs were exposed to the conditioned mediums, as indicated, for 6 h, respectively, and the formations of tube were detected. Bars = 250  $\mu$ m. Quantification of tube formation was assisted by S.CORE. A two-tailed student's t test was used for statistical analysis.

Figure S2

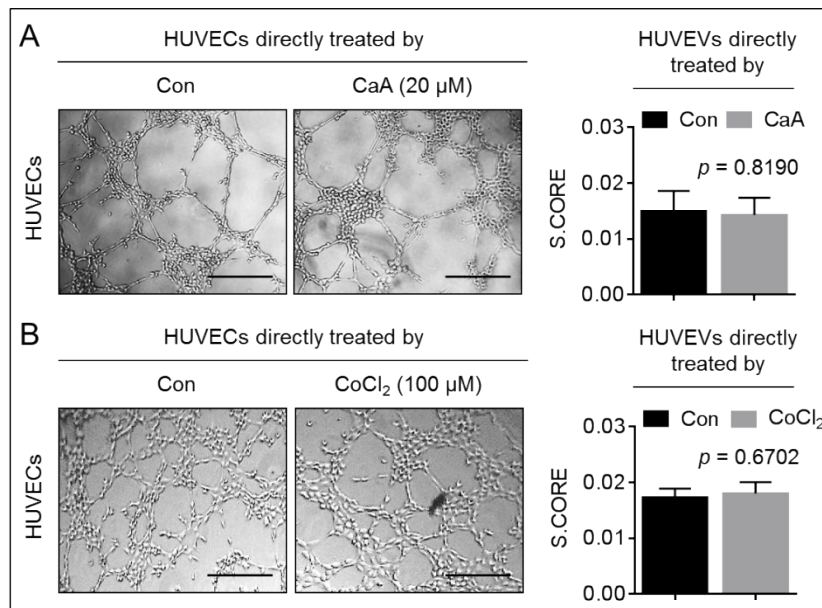


Figure S2. HUVECs were directly exposed to CaA or CoCl<sub>2</sub> for 6 h, respectively, and the tube formations were evaluated. Bars = 250 μm. Quantification of tube formation was assisted by S.CORE. A two-tailed student's t test was used for statistical analysis.