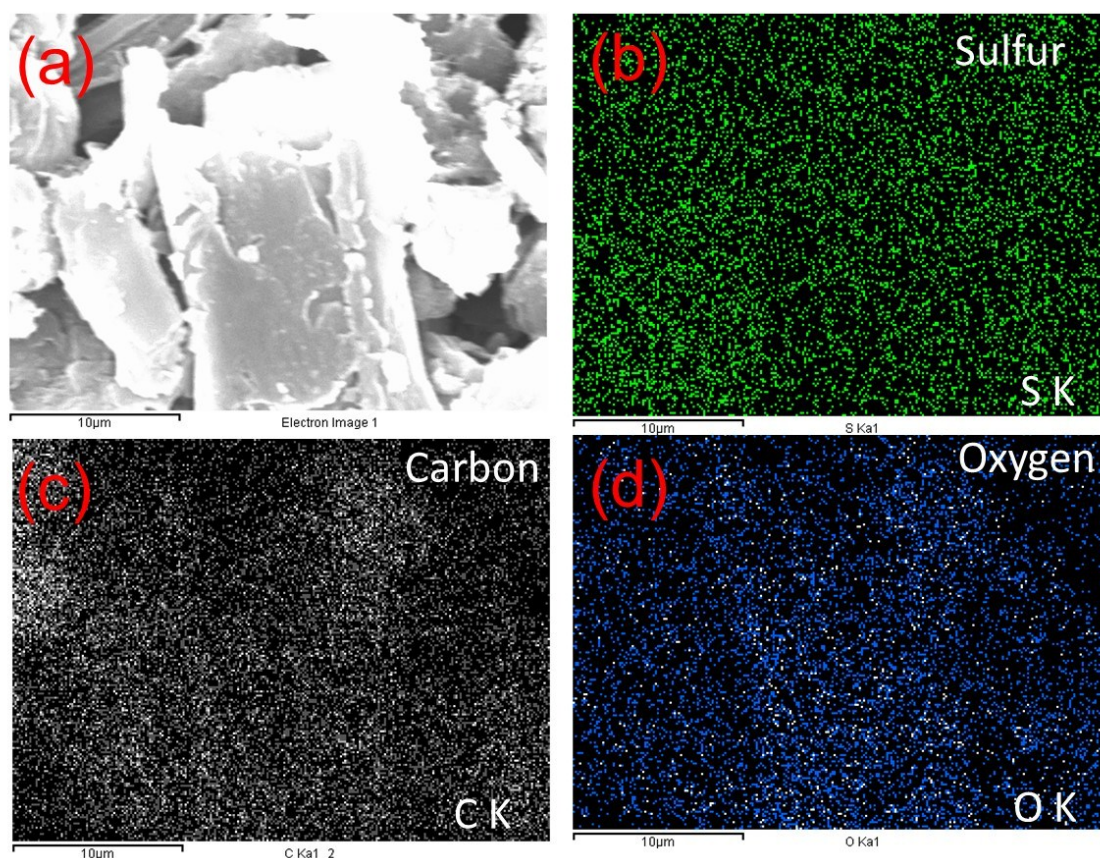


## Electronic supplementary information (ESI)

### Simultaneous reduction and covalent grafting of polythiophene on graphene oxide sheets for excellent capacitance retention

Santosh Kumar Yadav,<sup>a,\*</sup> Rajesh Kumar,<sup>b,\*</sup> Ashok K. Sundramoorthy,<sup>c</sup> Rajesh Kumar Singh<sup>d</sup> and Chong Min Koo<sup>e, f</sup>



**Figure S1** (a) FE-SEM image, and corresponding (b) sulfur (3.07 at%), (c) carbon (72.05 at%) and (d) oxygen (24.88 at%) EDS maps of the PTh-g-rGO hybrid.