

## Supplementary Figures

**Fig. S1.** Endogenous Ehm2/1 was mainly distributed along the cell membrane in MCF-7 cells. MCF-7 Cells was stained using Ehm2 antibody (green) and DAPI (blue).

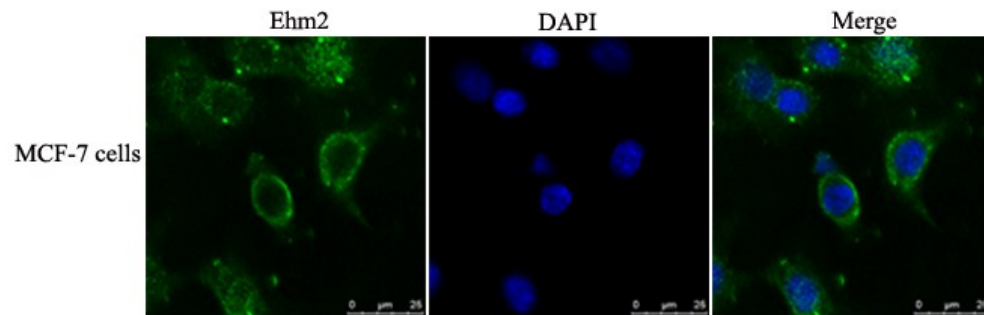
**Fig. S2.** Verification of Ehm2/1 overexpression. MCF-7 cells stably transfected with pCMV-Entry and pCMV-Ehm2/1-FLAG were harvested and subjected to western blotting using anti-Ehm2 antibody.  $\beta$ -actin was used as a loading control.

**Fig. S3.** Effect of overexpression and knockdown of Ehm2/1 on endogenous protein levels of  $\beta$ -catenin. MCF-7 cells stably transfected with pEF and Ehm2 ribozyme constructs, pCMV-Entry and pCMV-Ehm2/1-FLAG were harvested and subjected to western blotting using anti- $\beta$ -catenin antibody. Lane 1 and 3: MCF-7 cells stably transfected with pEF plasmid, lane 2 and 4: MCF-7 cells stably transfected with Ehm2 ribozyme, lane 5 and 7: MCF-7 cells stably transfected with pCMV-Entry, lane 6 and 8: MCF-7 cells stably transfected with pCMV-Ehm2/1-FLAG.

**Fig. S4.** Effect of overexpression and knockdown of Ehm2/1 on endogenous mRNA levels of  $\beta$ -catenin. MCF-7 cells stably transfected with Ehm2/1 express vectors or ribozyme vectors were harvested and RNA was extracted. Reverse transcription PCR was carried out using primers specific to Ehm2/1 and  $\beta$ -catenin. Lane 1: MCF-7 parental cells, lane 2: MCF-7 cells stably transfected with pCMV-Entry, lane 3: MCF-7 cells stably transfected with pCMV-Ehm2/1-FLAG, lane 4: MCF-7 parental cells, lane 5: MCF-7 cells stably transfected with pEF plasmid, lane 6: MCF-7 cells stably transfected with Ehm2 ribozyme.

**Fig. S5.** Ehm2/1 upregulation reduced cell invasion compared with the pCMV-Entry group. Shown are representative results of three independent experiments of invasion assay (top panel). Quantification of invaded cells is shown in the bottom panel ( $n=3$ ). Statistical significance was assessed by paired t-test in comparison to control. Error bars indicate SD, \* indicates significance  $p < 0.05$ .

**Fig. S6.** Overexpression of Ehm2/1 decreased the protein level of Snail. Cells stably transfected with pCMV-Entry and pCMV-Ehm2/1-FLAG were harvested and fractionated with a kit to isolate cell membrane, cytosolic and nuclear proteins, then Snail was analyzed using western blotting, LaminA/C was used as a loading control.



**Fig. S1.** Endogenous Ehm2/1 was mainly distributed along the cell membrane in MCF-7 cells. MCF-7 Cells was stained using Ehm2 antibody (green) and DAPI (blue).

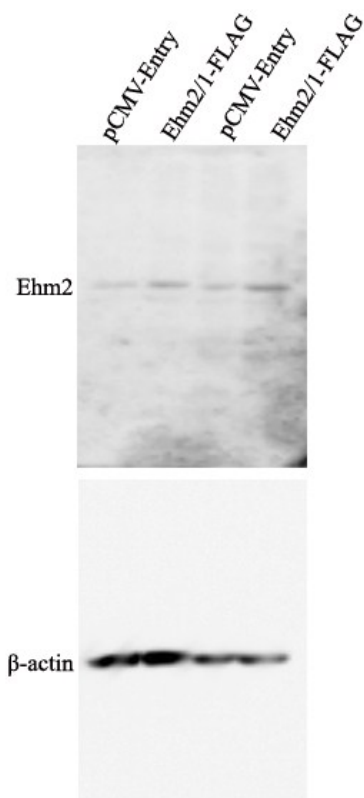
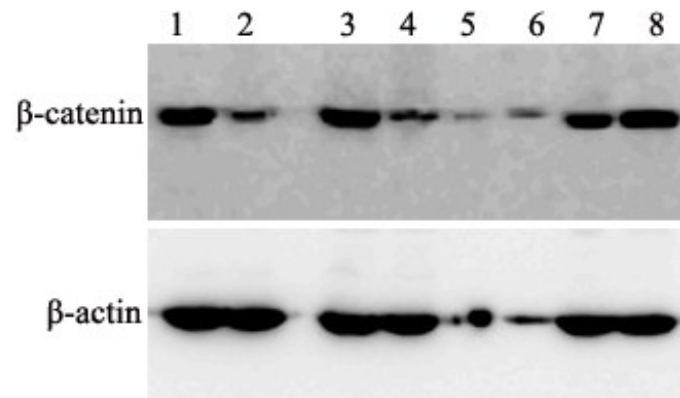
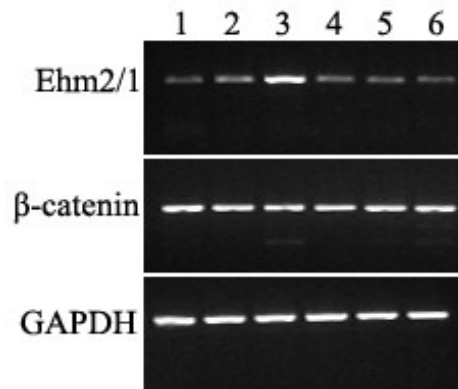


Figure S1

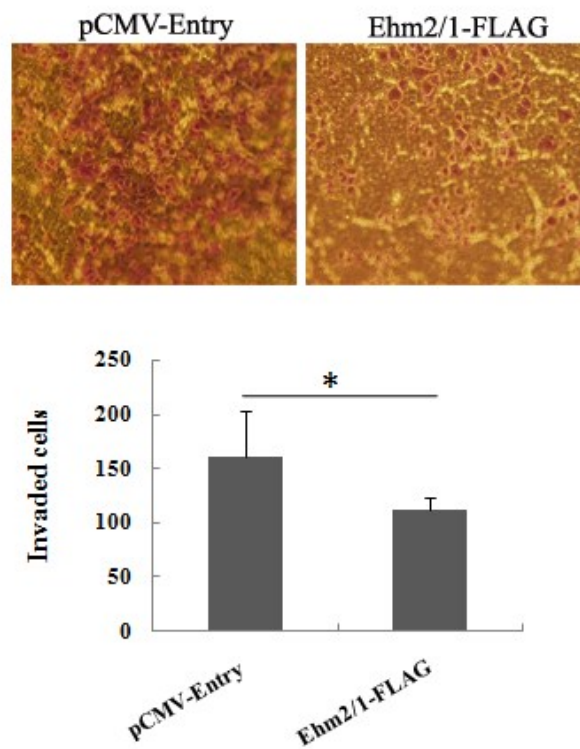
**Fig. S2.** Verification of Ehm2/1 overexpression. MCF-7 cells stably transfected with pCMV-Entry and pCMV-Ehm2/1-FLAG were harvested and subjected to western blotting using anti-Ehm2 antibody.  $\beta$ -actin was used as a loading control.



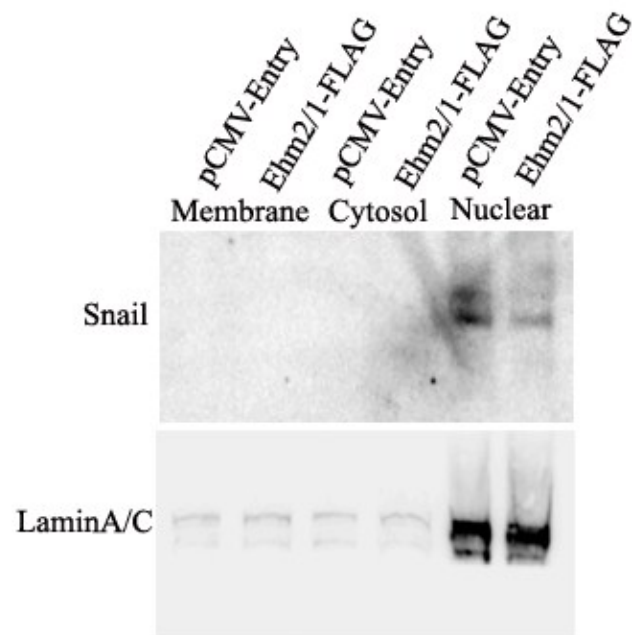
**Fig. S3.** Effect of overexpression and knockdown of Ehm2/1 on endogenous protein levels of  $\beta$ -catenin. MCF-7 cells stably transfected with pEF and Ehm2 ribozyme constructs, pCMV-Entry and pCMV-Ehm2/1-FLAG were harvested and subjected to western blotting using anti- $\beta$ -catenin antibody. Lane 1 and 3: MCF-7 cells stably transfected with pEF plasmid, lane 2 and 4: MCF-7 cells stably transfected with Ehm2 ribozyme, lane 5 and 7: MCF-7 cells stably transfected with pCMV-Entry, lane 6 and 8: MCF-7 cells stably transfected with pCMV-Ehm2/1-FLAG.



**Fig. S4.** Effect of overexpression and knockdown of Ehm2/1 on endogenous mRNA levels of  $\beta$ -catenin. MCF-7 cells stably transfected with Ehm2/1 express vectors or ribozyme vectors were harvested and RNA was extracted. Reverse transcription PCR was carried out using primers specific to Ehm2/1 and  $\beta$ -catenin. Lane 1: MCF-7 parental cells, lane 2: MCF-7 cells stably transfected with pCMV-Entry, lane 3: MCF-7 cells stably transfected with pCMV-Ehm2/1-FLAG, lane 4: MCF-7 parental cells, lane 5: MCF-7 cells stably transfected with pEF plasmid, lane 6: MCF-7 cells stably transfected with Ehm2 ribozyme.



**Fig. S5.** Ehm2/1 upregulation reduced cell invasion compared with the pCMV-Entry group. Shown are representative results of three independent experiments of invasion assay (top panel). Quantification of invaded cells is shown in the bottom panel (n=3). Statistical significance was assessed by paired t-test in comparison to control. Error bars indicate SD, \* indicates significance  $p < 0.05$ .



**Fig. S6.** Overexpression of Ehm2/1 decreased the protein level of Snail. Cells stably transfected with pCMV-Entry and pCMV-Ehm2/1-FLAG were harvested and fractioned with a kit to isolate cell membrane, cytosolic and nuclear proteins, then Snail was analyzed using western blotting, LaminA/C was used as a loading control.