

Supporting Information

Synthesis of a novel trinuclear palladium complex: The influence of oxime chelate ligand on biological evaluation towards double-strand DNA, BSA protein and molecular modeling studies

Kazem Karami*^a, Zohreh Mehri Lighvan^a, Ali Mohammad Alizadeh*^b, Marziyeh Poshteh-Shirani^a, Taghi Khayamian^a, Janusz Lipkowski^c

^aDepartment of Chemistry, Isfahan University of Technology, Isfahan, 84156/83111, Iran

^bCancer Research Center, Tehran University of Medical Science, Tehran, Iran, P.O: 1419733141.

^cInstitute of Physical Chemistry, Polish Academy of Sciences, Kasprzaka 44/52, 01-224 Warsaw, Poland

Supporting Information

Table. S1. Crystallographic data and structure refinement details for Pd complex

Figure. S1. IR spectra of trinuclear Pd complex

Figure. S2. ¹H-NMR spectra of trinuclear Pd complex in CDCl₃.

Figure. S3. ¹³C {¹H} NMR spectra of trinuclear Pd complex in CDCl₃

Table S1. Crystallographic data and structure refinement details for Pd complex

Compound	Complex
Empirical formula	C ₈₁ H ₅₁ Cl ₉ N ₆ O ₆ Pd ₃
Formula weight	1842.53
Crystal system	Monoclinic
Space group	P21/n
a / Å	21.2784 (4)
b / Å	17.2413 (3)
c / Å	21.3529 (3)
β / °	113.452 (2)
V / Å ³	7186.6 (2)
T / K	100 (1)
Z	4
ρ _{calc} / g cm ⁻³	1.703
μ / mm ⁻¹	9.57
Crystal dimensions / mm	0.24 × 0.16 × 0.09
Reflections collected	81423
Independent reflections (R _{int})	9350
GOF	0.99
R1, wR2 [I > 3σ(I)]	0.061, 0.165
R1, wR2 (all data)	0.0863, 0.165
Res. el. dens. (e Å ⁻³)	1.20, -1.82
CCDC number	1423655

Figure. S1. IR spectra of trinuclear Pd complex

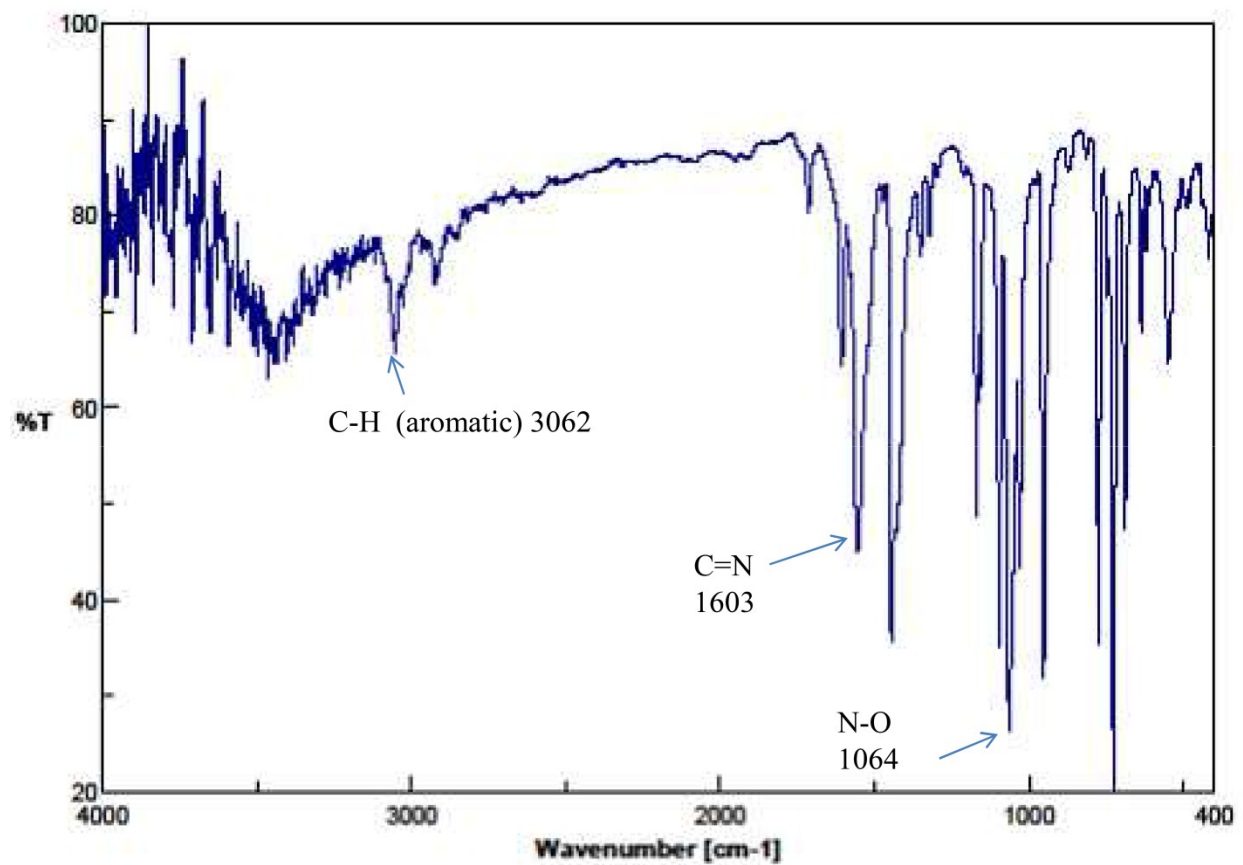


Figure. S2. ^1H -NMR spectra of trinuclear Pd complex in CDCl_3 .

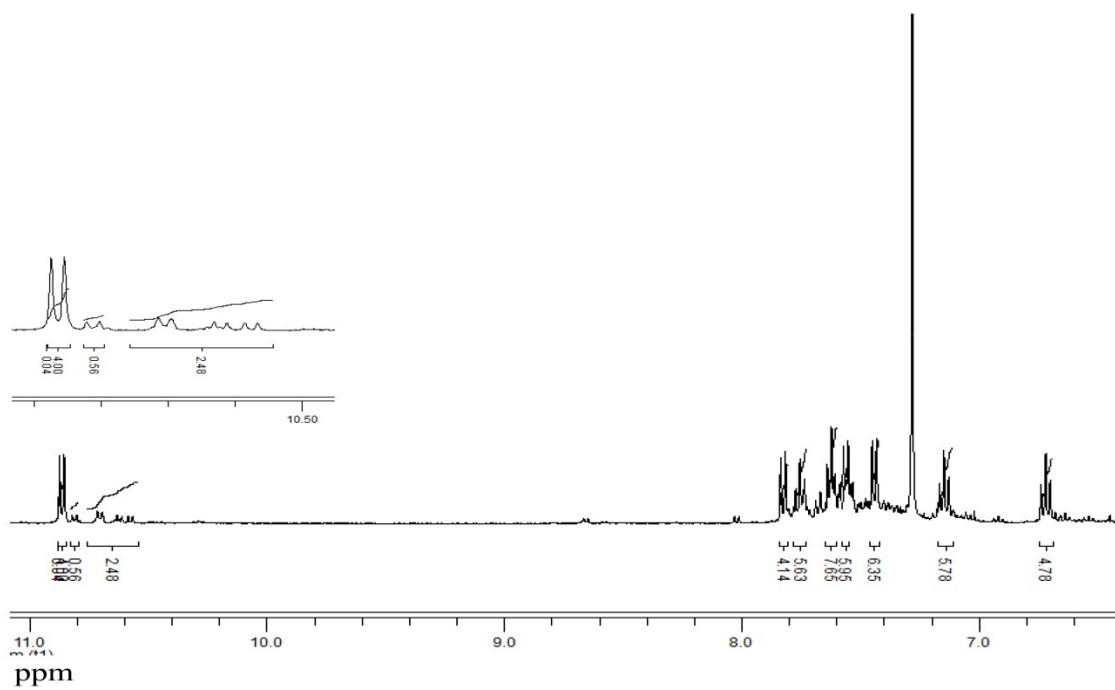


Figure. S3. $^{13}\text{C}\{^1\text{H}\}$ -NMR spectra of trinuclear Pd complex in CDCl_3 .

