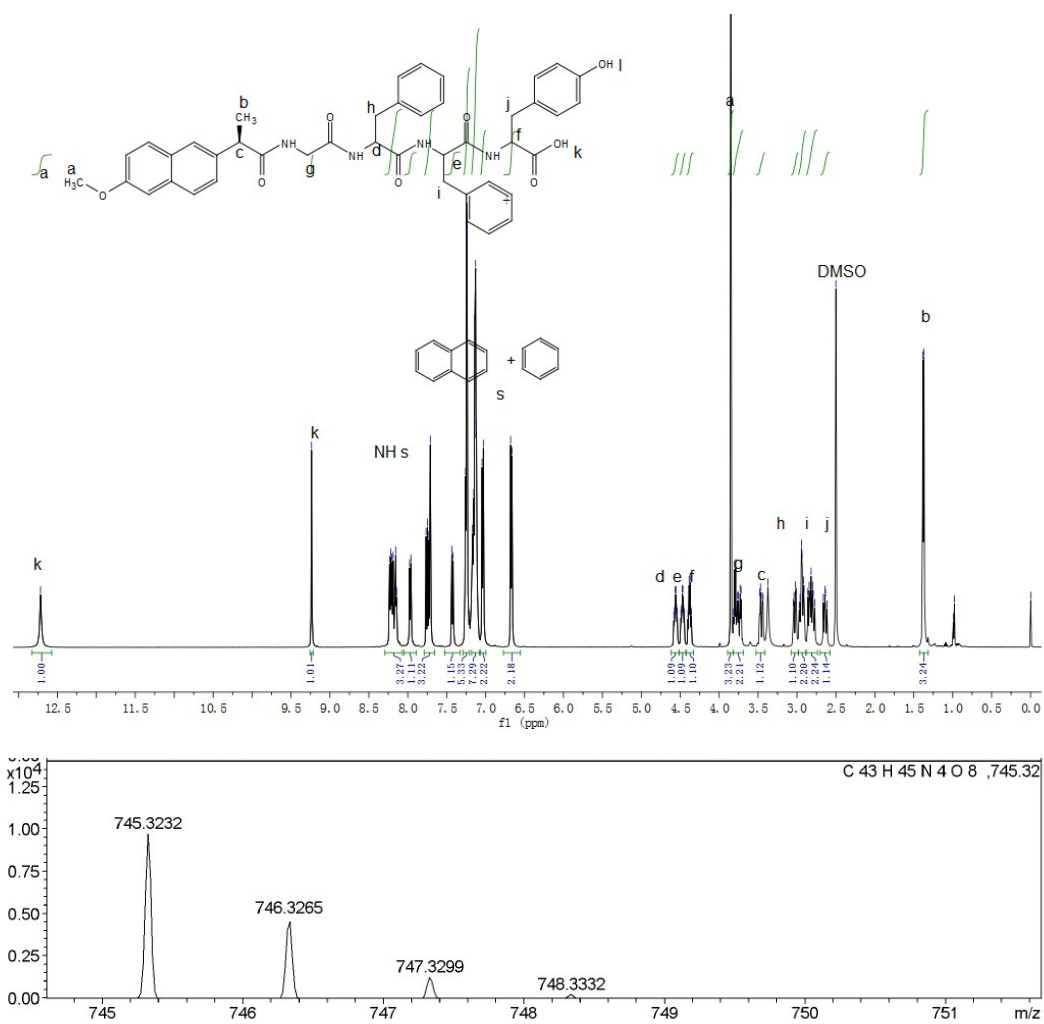
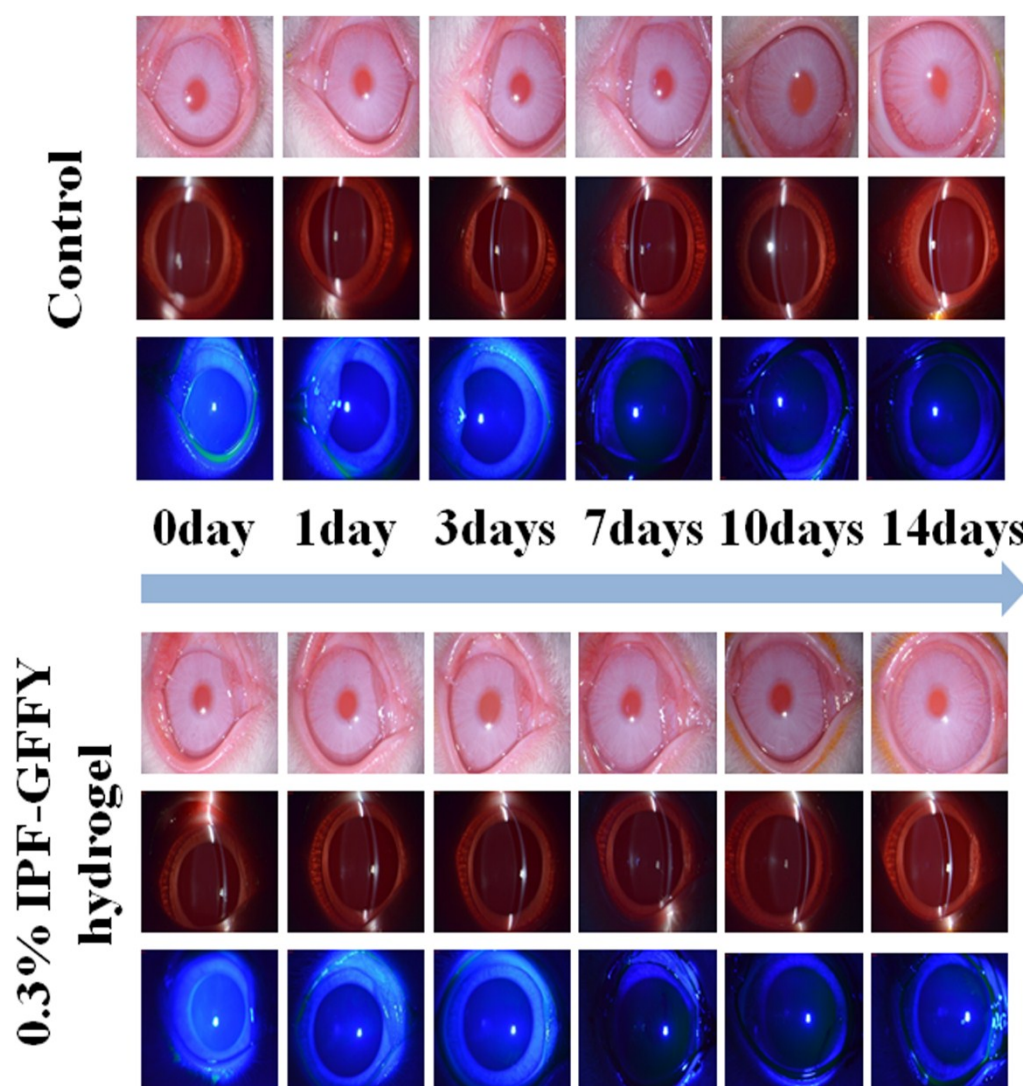


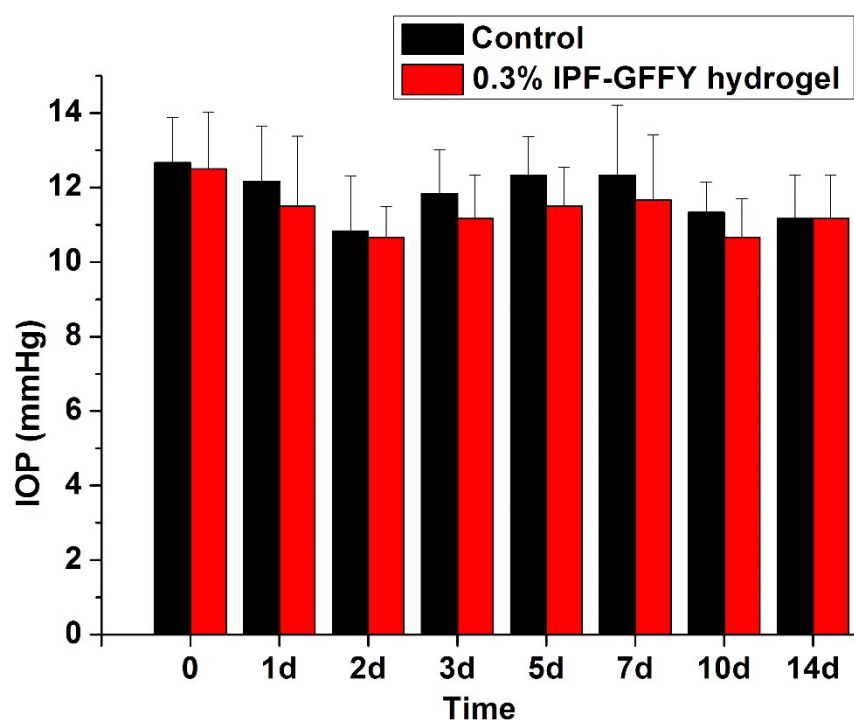
**Fig.S1** <sup>1</sup>H-NMR spectrum and MS of IPF-GFFY



**Fig.S2**  $^1\text{H}$ -NMR spectrum and MS of NPX-GFFY



**Fig.S3** Slit lamp observation and fluorescence staining of corneal tissue after instillation of NS and 0.3% IPF-GFFY supramolecular hydrogel daily for three days.



**Fig.S4** Intraocular pressure (IOP) changes of rabbit after instillation of NS and 0.3% IPF-GFFY supramolecular hydrogel daily for three days.