

Supplementary Information for

Exploration of Selective Decoration of Janus Silica Particles within Polymeric Patterned Pore Arrays

Pinghui Yang^{a,b}, Junjie Huang^{a,b}, Wei Sun^{*a,b}, Yujie Wei^{a,b}, Yuwei Liu^{a,b}, Lingyun Ding^{a,b},
Jinbiao Bao^{a,b}, Zhong-Ren Chen^{a,b}

^a Department of Polymer Science and Engineering, Faculty of Materials Science and
Chemical Engineering, Ningbo University, Ningbo, 315211, China

^b Key Laboratory of Specialty Polymers, Faculty of Materials Science and Chemical
Engineering, Ningbo University, Ningbo, 315211, China

*Corresponding author and E-mail: sunwei@nbu.edu.cn

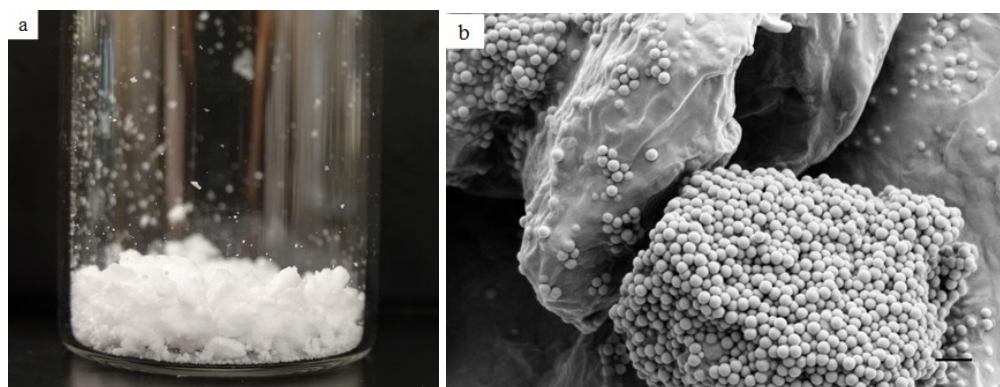
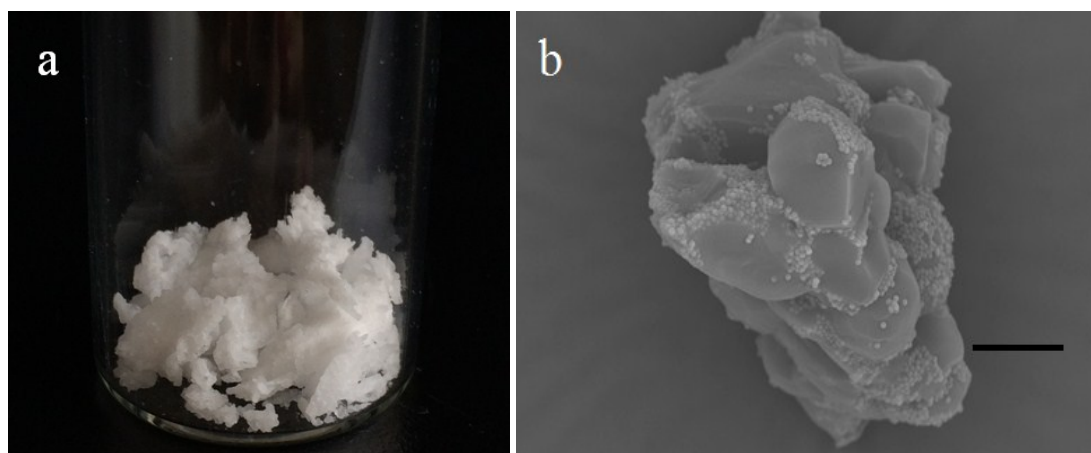


Figure S1. (a) Digital photograph and (b) SEM images of colloidosomes collected mostly by scraping solidified product on the flask walls. (550 nm SiO₂-OH). The scale bar is 2 μm.



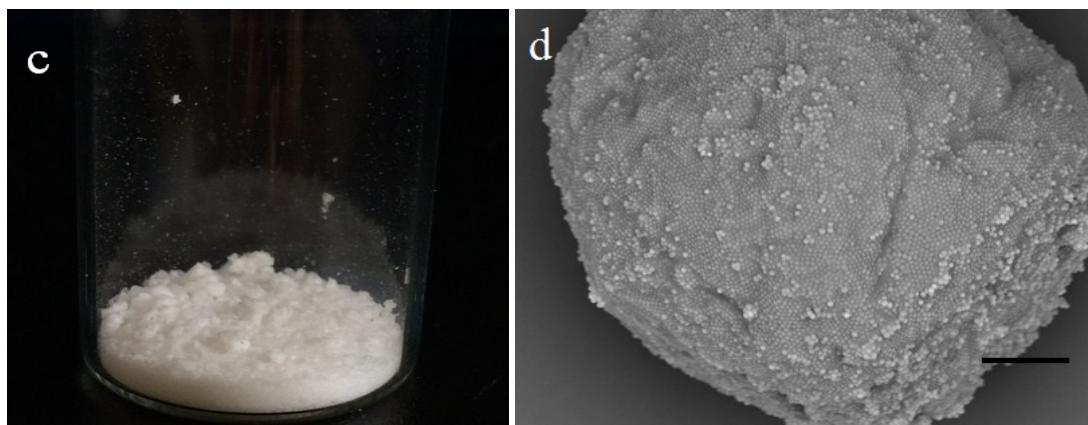


Figure S2. Colloidosomes produced following different cooling methods: (a) colloidosomes collected after conventional self-cooling; (b) SEM image of representative wax structures from the batch showed in (a); (c) colloidosomes collected following “inside out” cooling strategy; (d) SEM image of representative wax structures from the batch showed in (c). The scale bars are 10 μm .