

## Supporting information

### Semi Fluorinated Polymers as Surface Energy Controlled Layers for Liquid Crystals Alignment

Gang Cheng<sup>a,b\*</sup>; Bryan Spraul<sup>b</sup>; Dennis Smith Jr.<sup>b</sup>; Dvora Perahia<sup>b\*</sup>

a. College of Life Science and Technology, Beijing University of Chemical  
Technology, Beijing, 100029, China

b. Chemistry Department, Clemson University, SC, 29634, USA

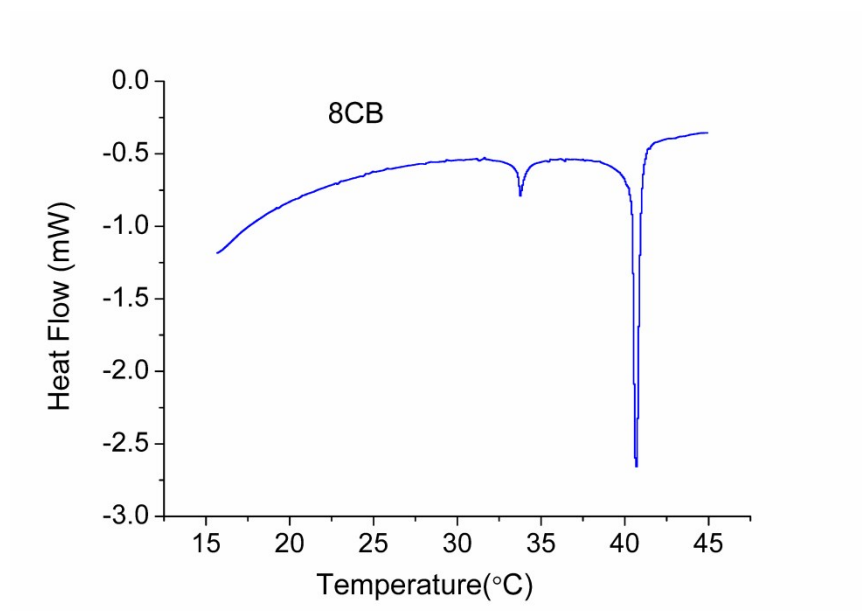


Fig. S1 DSC data of pure 8CB.

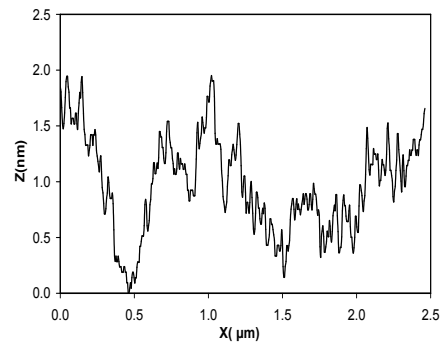
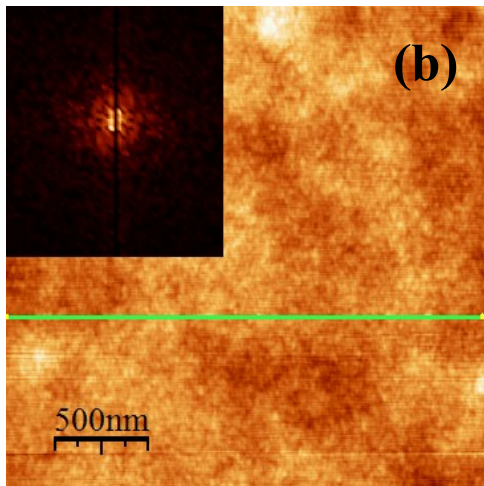
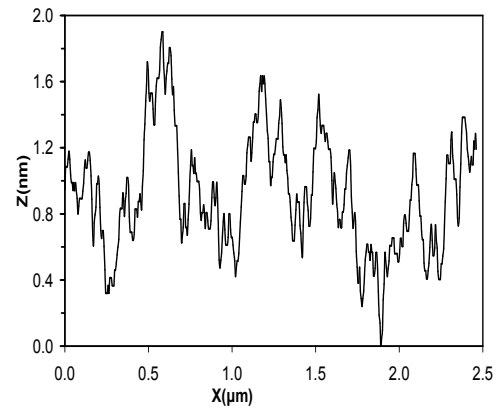
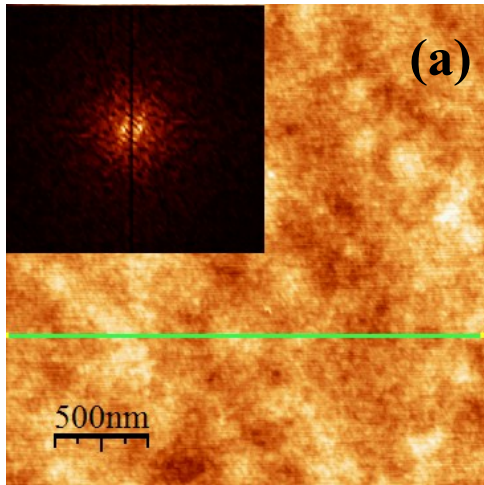


Fig. S2 AFM height images of PFCB polymer thin films and representative cross sections. (a) (75/25)-PFCB, (b) (25/75)-PFCB. The inserts are two dimensional Fast Fourier Transform (2D FFT) of the height images.

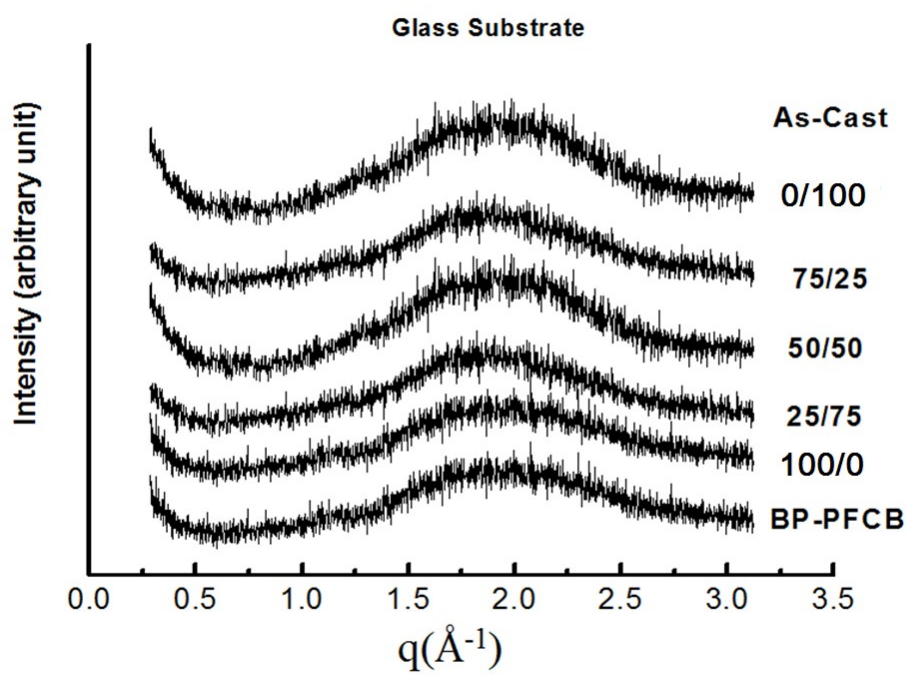


Fig. S3 XRD of (6H/6F)-PFCB polymer thin films without annealing.