

Supplementary information

Selective enhancement of human stem cell proliferation by mussel inspired surface coating

Xiumei Jiang^{a,b}, Yanfang Li^b, Ying Liu^a, Chunying Chen^{a*}, Menglin Chen^{b*}

^aCAS Key Laboratory for Biomedical Effects of Nanomaterials and Nanosafety & CAS Center for Excellence in Nanoscience, National Center for Nanoscience and Technology, Beijing 100190, China

^bInterdisciplinary Nanoscience Center (iNANO), Aarhus University, DK-8000 Aarhus C, Denmark

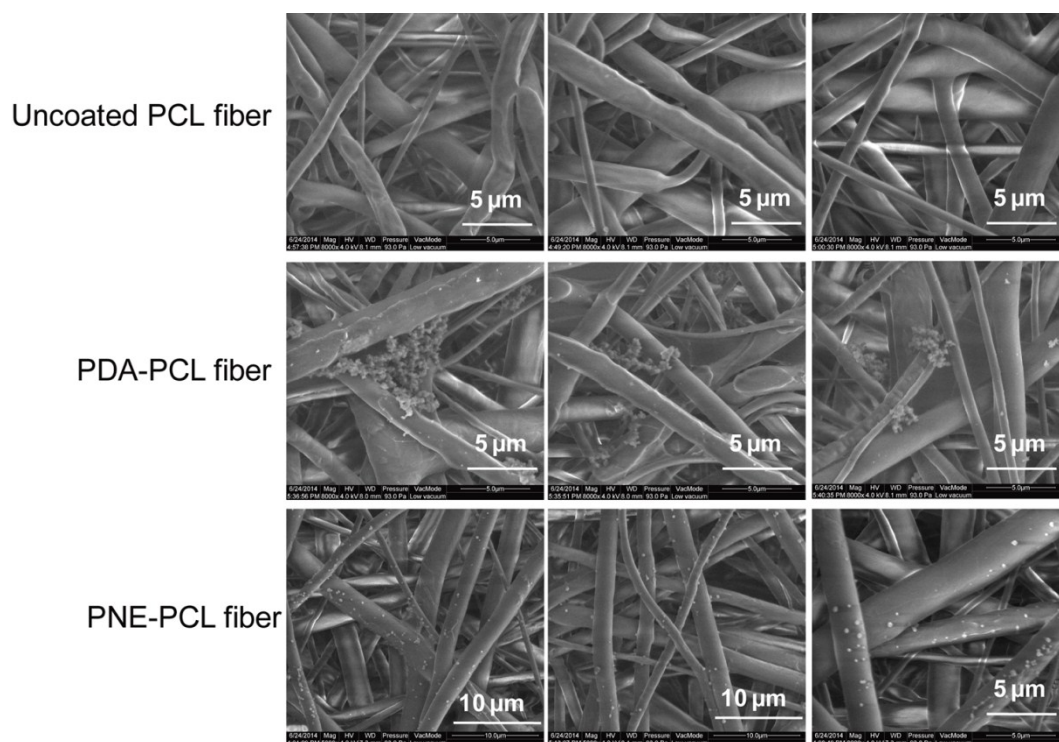


Figure S1, Surface morphology characterization of PCL fiber, PDA-PCL fiber and PNE-PCL fiber with ESEM.

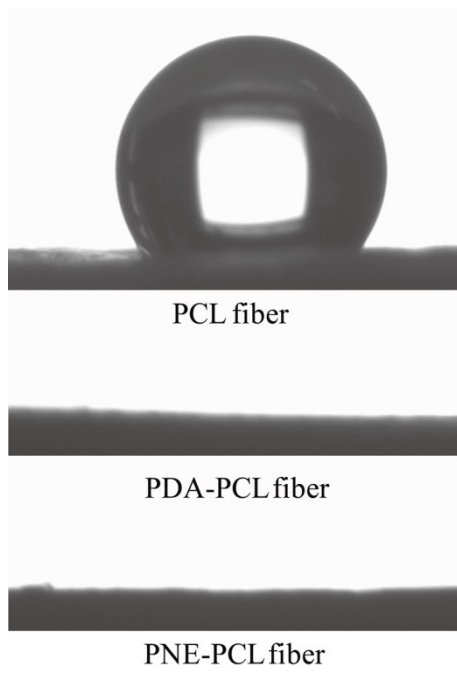


Figure S2, Contact angle of PCL fiber before and after PDA or PNE surface coating.

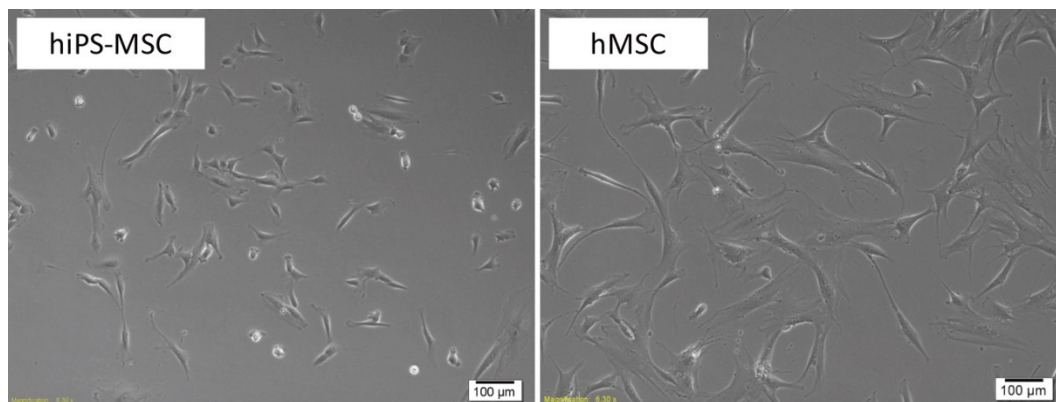


Figure S3 Cell morphology of hiPS-MSC and hMSC cells cultured on tissue culture plate.

Table S1 Time-dependent surface coating of PDA or PNE measured by XPS.

	PCL			PDA-PCL			PNE-PCL		
	C1s	N1s	O1s	C1s	N1s	O1s	C1s	N1s	O1s
0.5 h	78.01	0	21.99	73.22	4.65	22.12	76.09	1.86	22.05
1 h	78.01	0	21.99	73.36	4.97	21.67	75.69	1.71	22.6
3 h	78.01	0	21.99	73.95	5.19	20.86	75.8	1.81	22.39
6 h	78.01	0	21.99	72.4	5.48	22.07	73.84	2.8	23.36
17 h	78.01	0	21.99	71.99	6.23	21.78	70.99	4.39	24.62