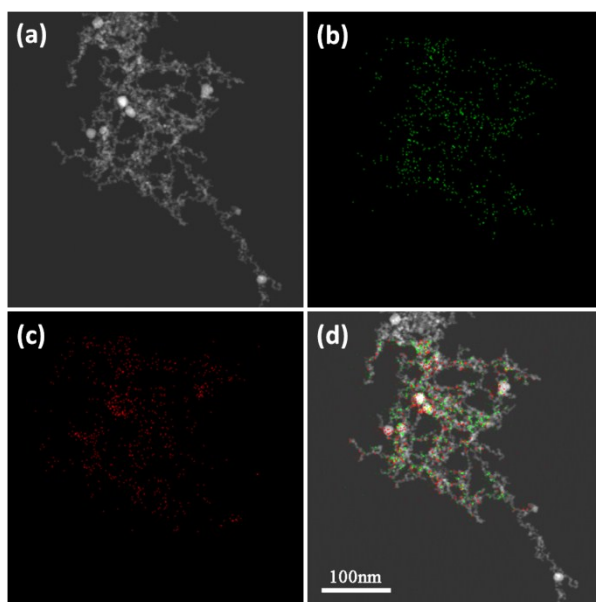


Electronic Supplementary Information for

**Wormlike Micelle Templated Synthesis of Mono- and Bi-metallic
Nanochain Networks with Adjustable Structure and Constituent**

Xinpei Gao, Fei Lu, Wenjiang Yang, Fengkang Shang, Liqiang Zheng*

*Key Laboratory of Colloid and Interface Chemistry, Shandong University, Ministry of
Education, Jinan 250100, China*



**Fig. S1 HAADF STEM and STEM-EDX mapping of Pd-Au nanochain networks
(green for Pd and red for Au).**

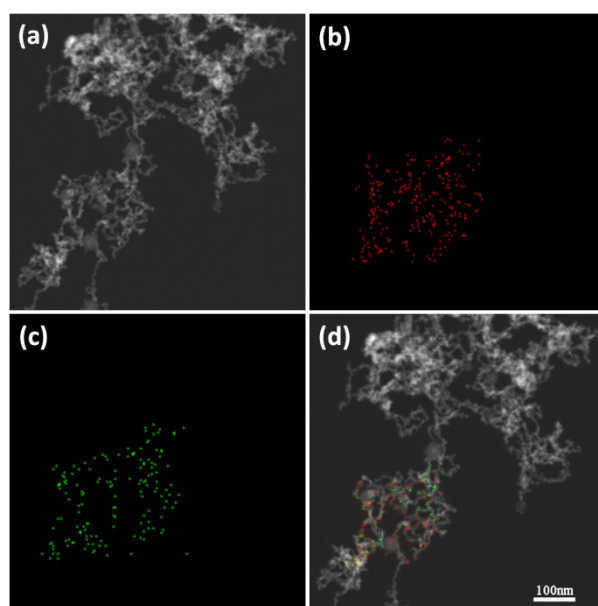


Fig. S2 HAADF STEM and STEM-EDX mapping of Pt-Pd nanochain networks (red for Pt and green for Pd).