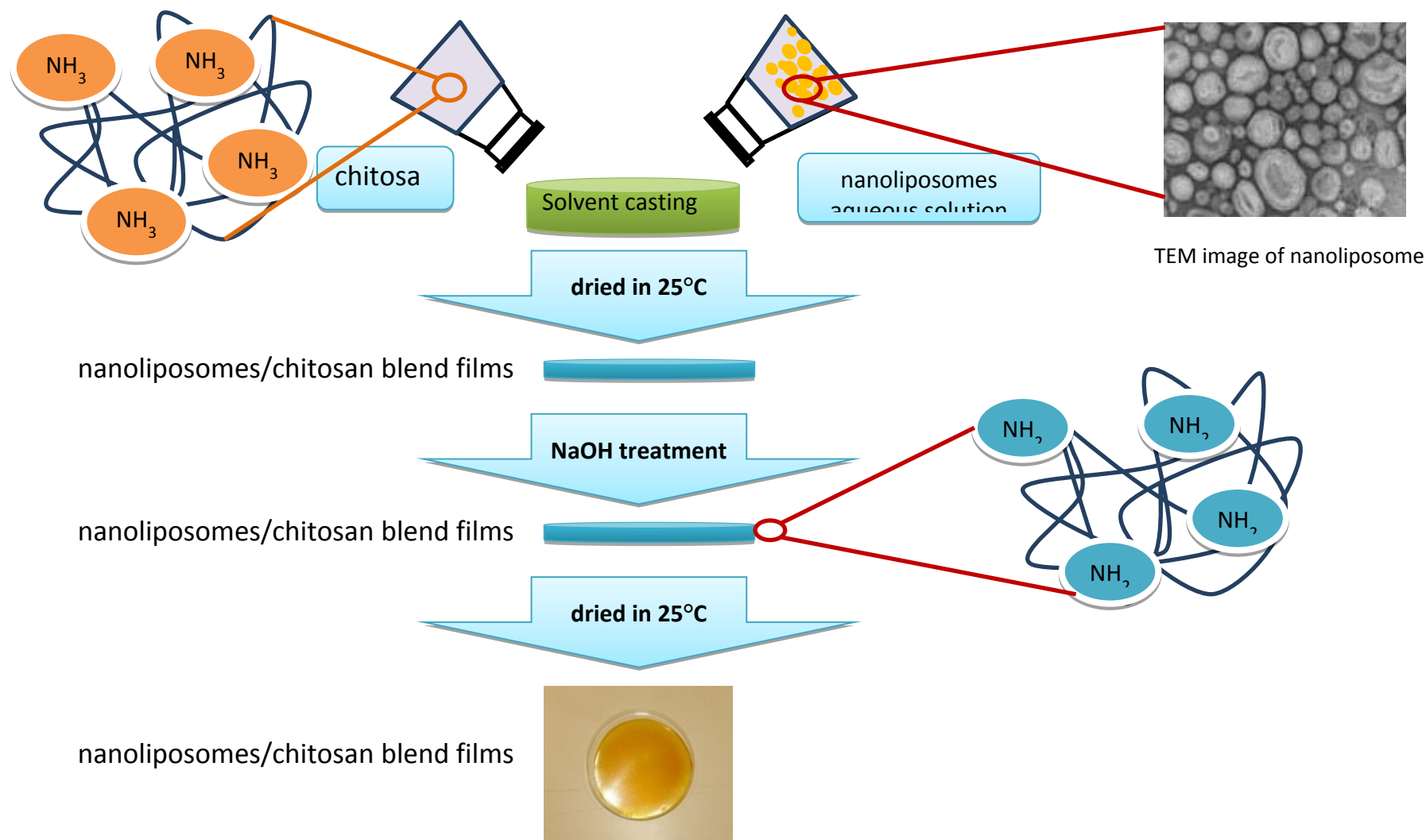


Supplemental documents



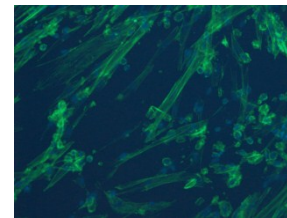
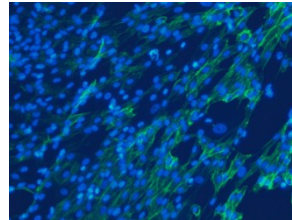
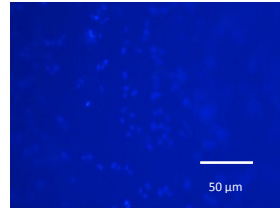
Schematic illustration of functionalized chitosan thin film preparation.

7D

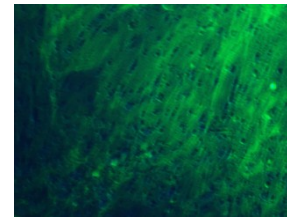
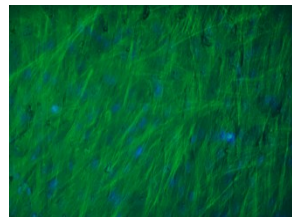
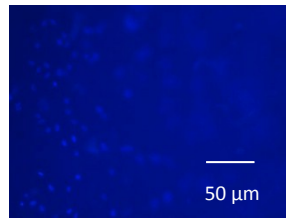
14D

21D

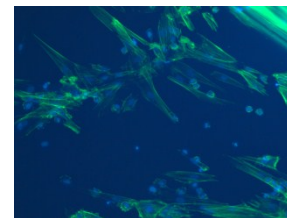
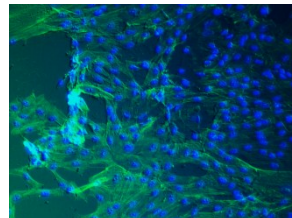
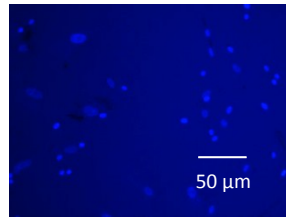
chitosan



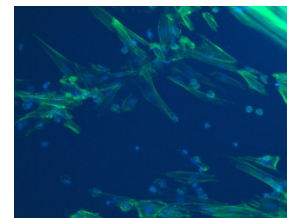
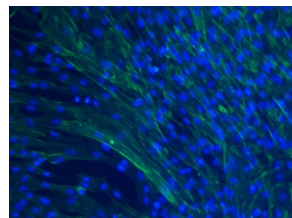
soya/cht 0.5 %

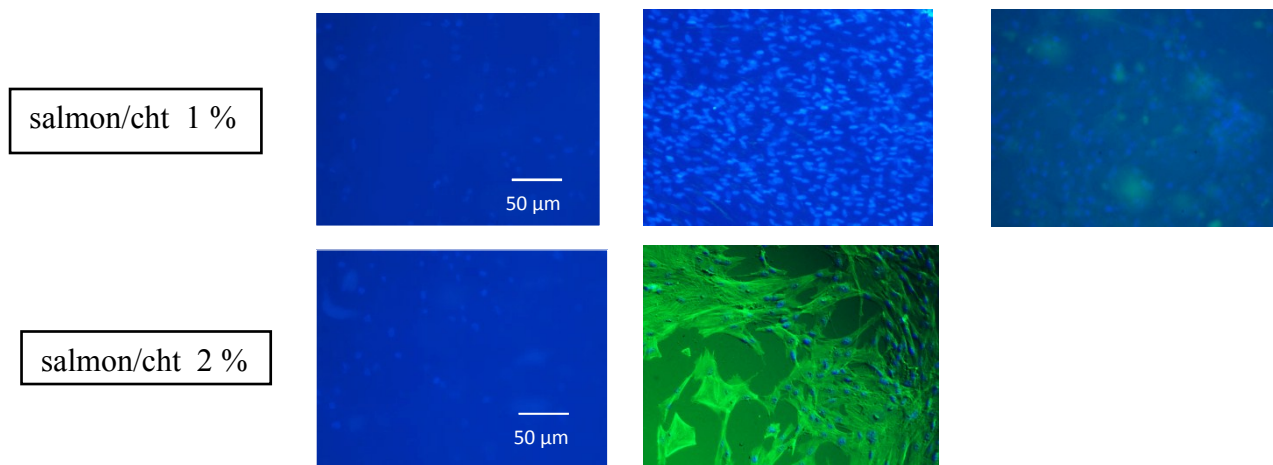


soya/cht 1 %



salmon/cht 0.5 %





Human mesenchymal stem cells (hMSCs) attachment and spreading on nanoliposomes functionalized chitosan films at 7th, 14th and 21st day. Ns-cht and nf-cht mean soya and salmon nanoliposomes/chitosan blend films, respectively. 1, 2, and 4 indicate that the concentrations of nanoliposomes are 1, 2, and 4 mg/mL.