

Exploring the structural relationship between encapsulated antimicrobial peptides and the bilayer membrane mimetic lipidic cubic phase: Studies with gramicidin A'

Supporting information

Thomas G. Meikle^{ab}, Charlotte E. Conn^c, Frances Separovic^a, Calum Drummond^{bc}

^a School of Chemistry, Bio21 Institute, University of Melbourne, VIC 3010, Australia

^b CSIRO Manufacturing Flagship, Bag 10 Clayton VIC 3169, Australia

^c School of Applied Sciences, College of Science, Engineering and Health, RMIT University, 124 La Trobe Street, Melbourne VIC 3000, Australia. Email: calum.drummond@rmit.edu.au

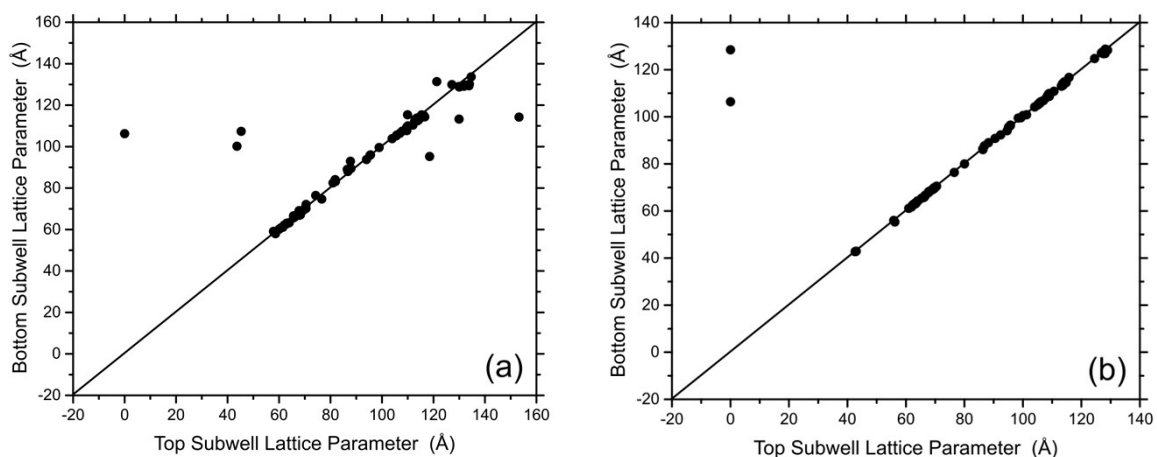


Figure S1. Plots of lattice parameters for top vs. bottom well, for (a) 2 h, and (b) 48 h time points.

Table S1: The parameters resulting from fitting a first order decay function to the plots of lattice parameter (Å) vs. gA' concentration (mol%).

$$\text{Model: } y = y_0 + A_1 e^{-x/t_1}$$

Sample	y_0	A_1	t_1
Monoolein (Q_{II}^D)	66.28	41.15	3.20
Monoolein 8 wt% Cholesterol (Q_{II}^D)	64.70	48.82	2.89
Monopalmitolein (Q_{II}^D)	66.69	48.56	3.96
Monovaccenin (Q_{II}^D)	69.99	60.68	2.42
Phytantriol (Q_{II}^D)	65.88	3.58	2.42
Phytanoyl monoethanolamide (Q_{II}^D)	57.95	5.07	5.21

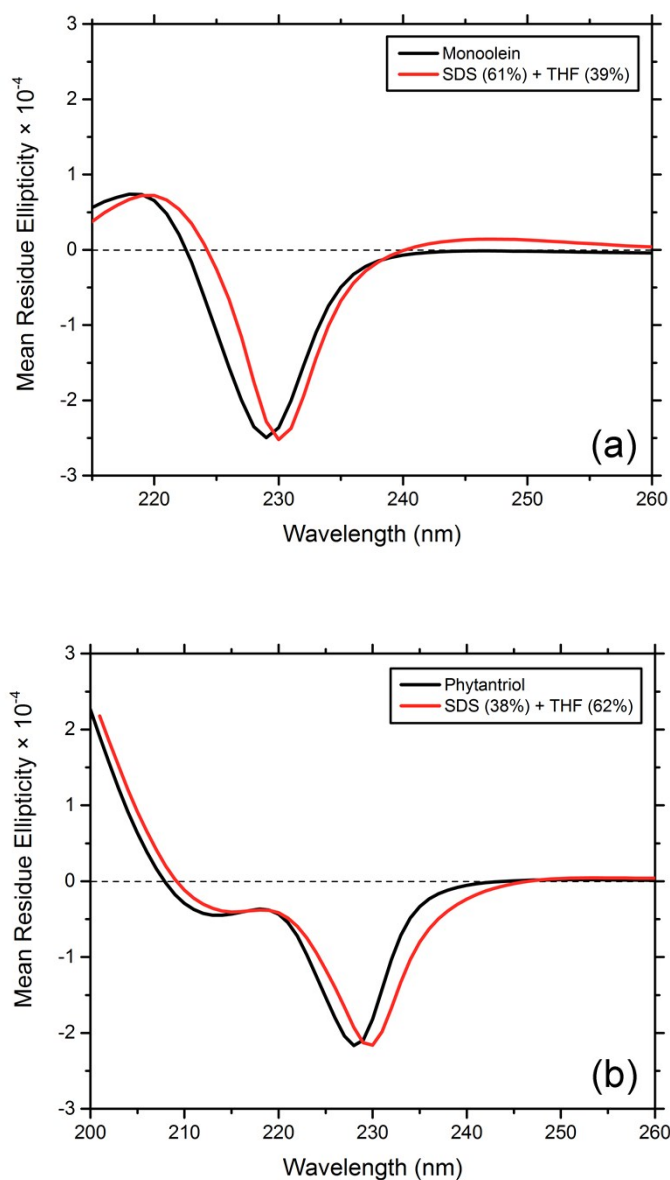


Figure S2: Comparison of the CD spectra of gA' encapsulated in monoolein (a), and phytantriol (b) with a weighted intensity-adjusted combination of the spectra of gA' in SDS micelles and THF.