



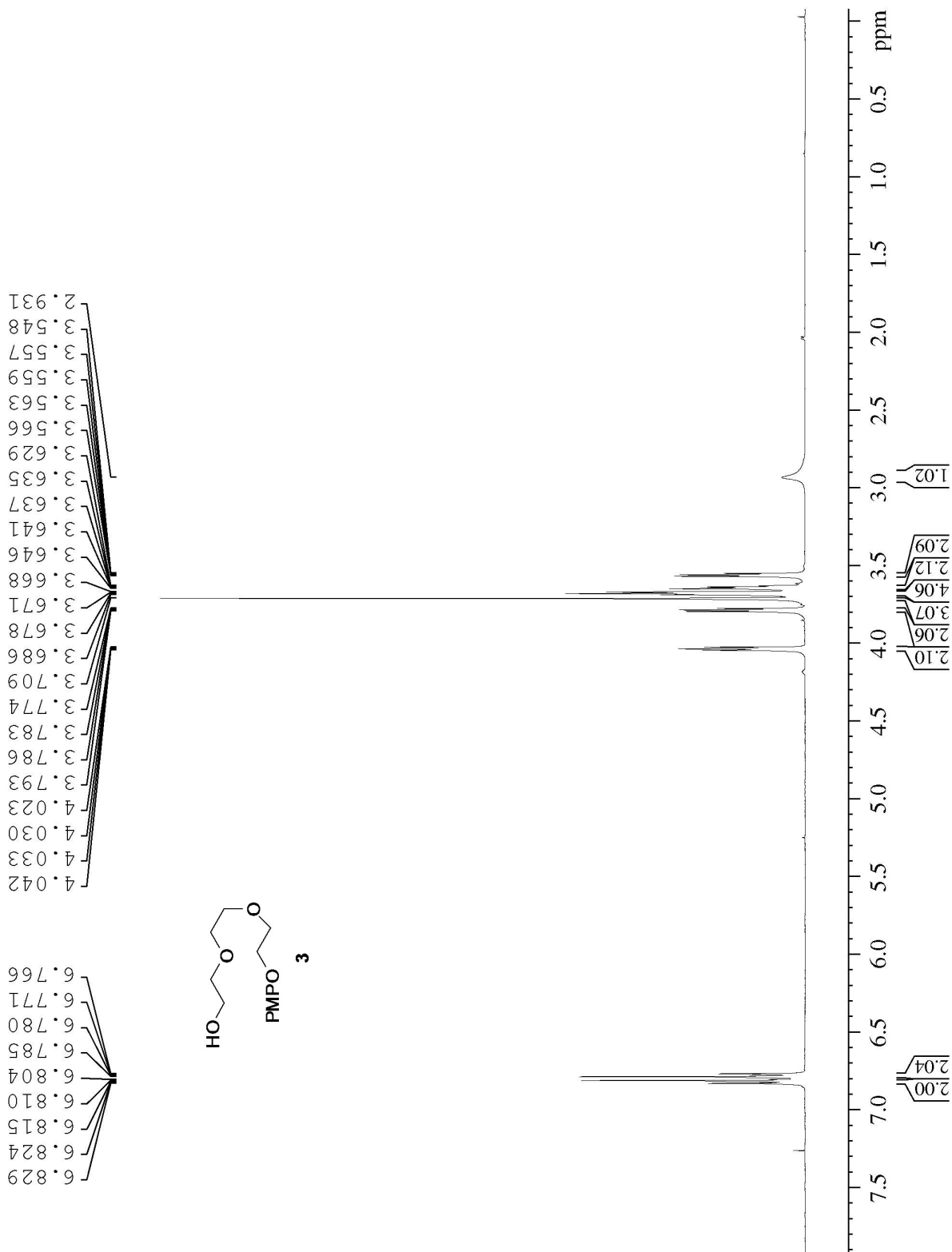
Current Data Parameters
 NAME BM-AM-SCHLENK1.08
 EXPNO 110
 PROCNO 1

F2 - Acquisition Parameters
 Date_ 20151207
 Time 10.48
 INSTRUM spect
 PROBHD 5 mm PABBO BB-
 PULPROG zg30
 TD 65536
 SOLVENT CDCl3
 NS 16
 DS 2
 SWH 10330.578 Hz
 FIDRES 0.157632 Hz
 AQ 3.1719425 sec
 RG 23.4
 DW 48.400 usec
 DE 6.50 usec
 TE 2863.5 K
 TL 1.0000000 sec
 TD0 1

===== CHANNEL f1 =====
 NUC1 1H
 P1 14.25 usec
 PL1 1.30 dB
 PL1W 15.30635643 W
 SFO1 500.2330891 MHz

F2 - Processing parameters
 SI 131072
 SF 500.2300150 MHz
 WDW EM
 SSB 0
 LB 0.30 Hz
 GB 0
 PC 1.00

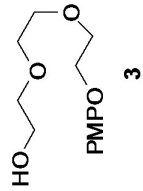
BM-AM-LINKERPENTA in CDCl3



BM-AM-LINKERPENTA in CDCl3



153.78
152.65



115.46
114.42

77.25
76.99
76.74
72.37
70.54
70.12
69.61
67.87

61.44

55.47

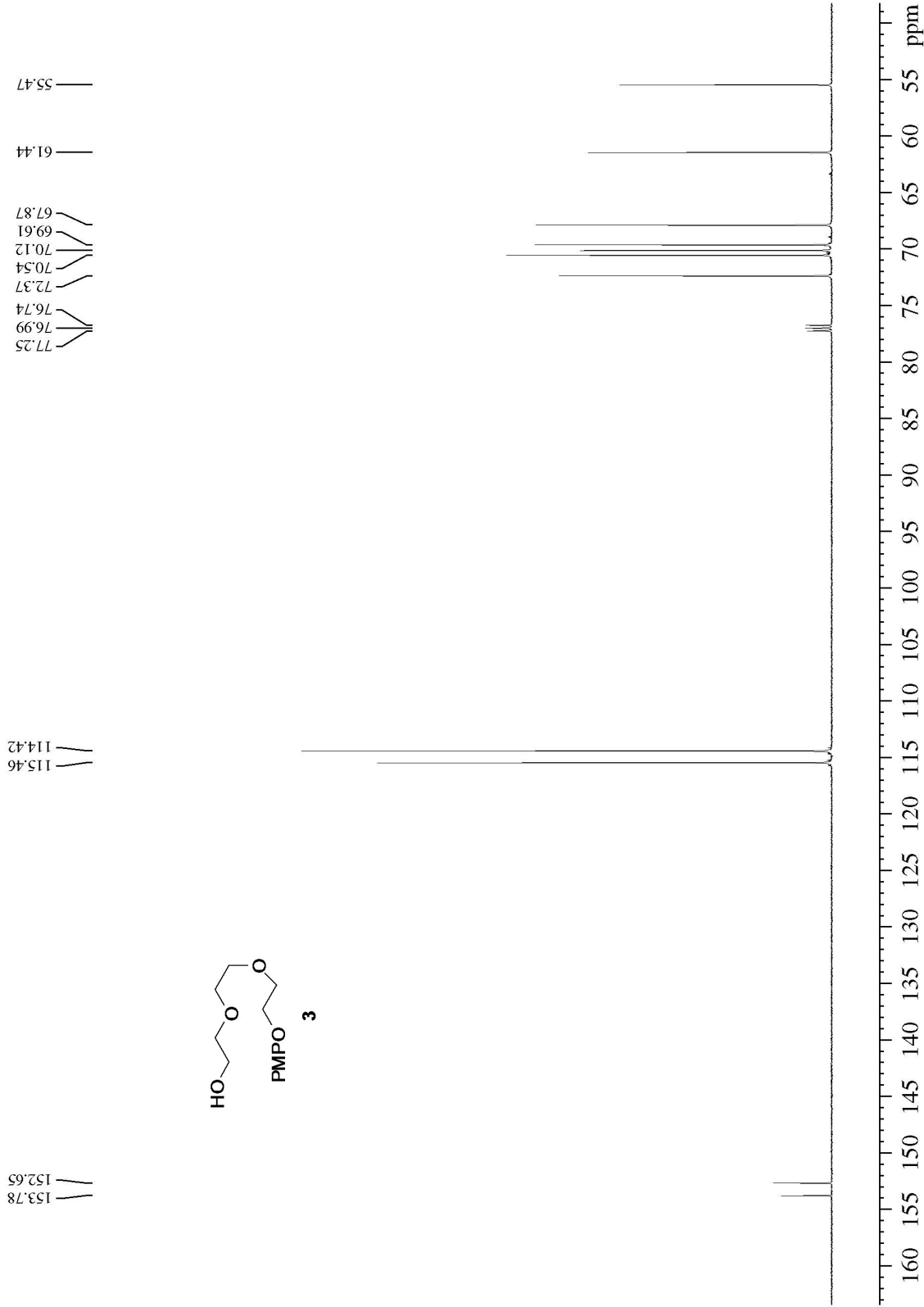
Current Data Parameters
NAME BM-AM-SCHLENKI08
EXPNO 113
PROCNO 1

F2 - Acquisition Parameters
Date_ 20151207
Time_ 11.08
INSTRUM spect
PROBHD 5 mm PABBO BB-
PULPROG zgpgc
TD 65536
SOLVENT CDCl3
NS 138
DS 4
SWH 29761.904 Hz
FIDRES 0.454131 Hz
AQ 1.1010048 sec
RG 203
DW 16.800 usec
DE 5.000 usec
TE 283.20 K
D1 2.00000000 sec
D11 0.03000000 sec
TD0 1

===== CHANNEL f1 =====
NUC1 13C
P1 0.150 usec
PL1 -0.150 dB
PL1W 90.18825531 W
SFO1 125.7955118 MHz

===== CHANNEL f2 =====
CDDPRG[2] waltz16
NUC2 1H
P2 80.0 usec
PL2 1.30 dB
PL2W 16.00 dB
PL1W 15.30635643 W
SFO2 500.2320009 MHz

F2 - Processing Parameters
SI 32768
SF 125.762596 MHz
WDW EM
SSB 0
LB 1.00 Hz
GB 0
PC 1.40





BM-AM-45PS in CDCl3

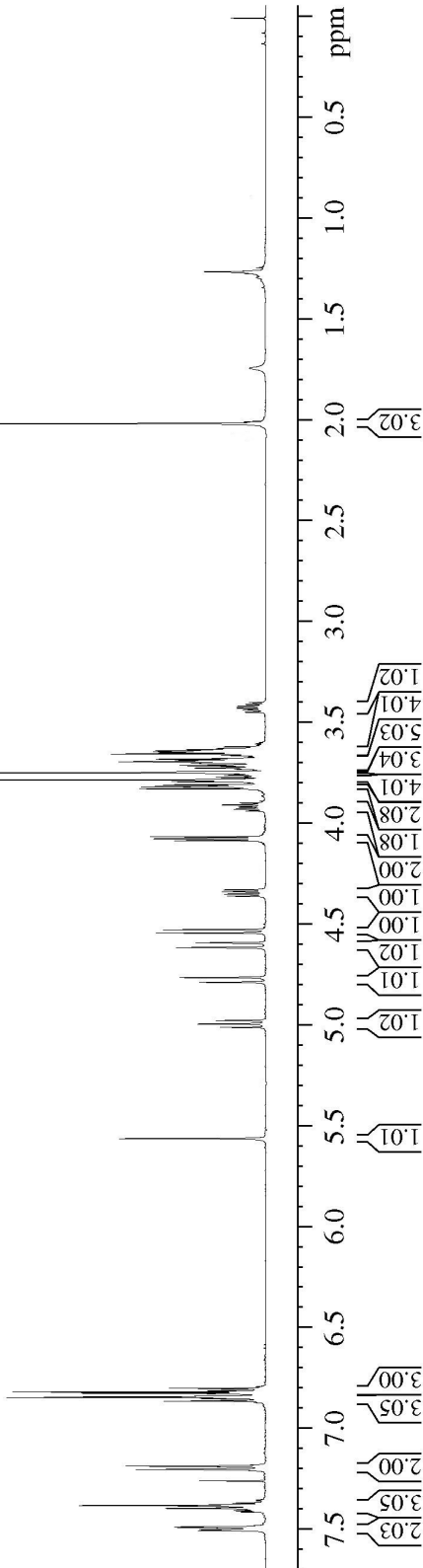
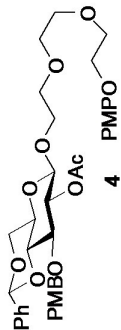
7.491
7.487
7.398
7.396
7.386
7.382
7.204
7.186
6.865
6.847
6.843
6.840
6.826
6.819
6.800
5.563
4.995
4.764
4.616
4.593
4.543
4.527
4.086
4.076
4.066
3.829
3.821
3.819
3.809
3.793
3.785
3.748
3.744
3.726
3.714
3.702
3.700
3.696
3.689
3.683
3.681
3.656
3.650
3.648
3.644
3.642
3.641
3.639
3.634
2.017

Current Data Parameters
NAME BM-AM-45PS
EXPNO 40
PROCNO 1

F2 - Acquisition Parameters
Date_ 201607
Time 10:07
INSTRUM spect
PROBHD 5 mm PABBO BB-
PULPROG zg30
TD 65536
SOLVENT CDCl3
DS 2
SWH 10330.578 Hz
FIDRES 0.157632 Hz
AQ 3.1719425 sec
RG 64
DW 48.400 usec
DE 6.00 usec
TE 1157.6 K
D1 1.00000000 sec
TD0 1

===== CHANNEL f1 =====
NUC1 13
P1 14.25 usec
PL1 1.30 dB
PL1W 15.30635643 W
SFO1 500.2330891 MHz

F2 - Processing Parameters
SI 32768
SF 500.230155 MHz
WDW EM
SSB 0
LB 0.30 Hz
GB 0
FC 1.00



BM-AM-45PS in CDCl3



Current Data Parameters
 NAME BM-AM-45PS
 EXNO 41
 PROCNO 1

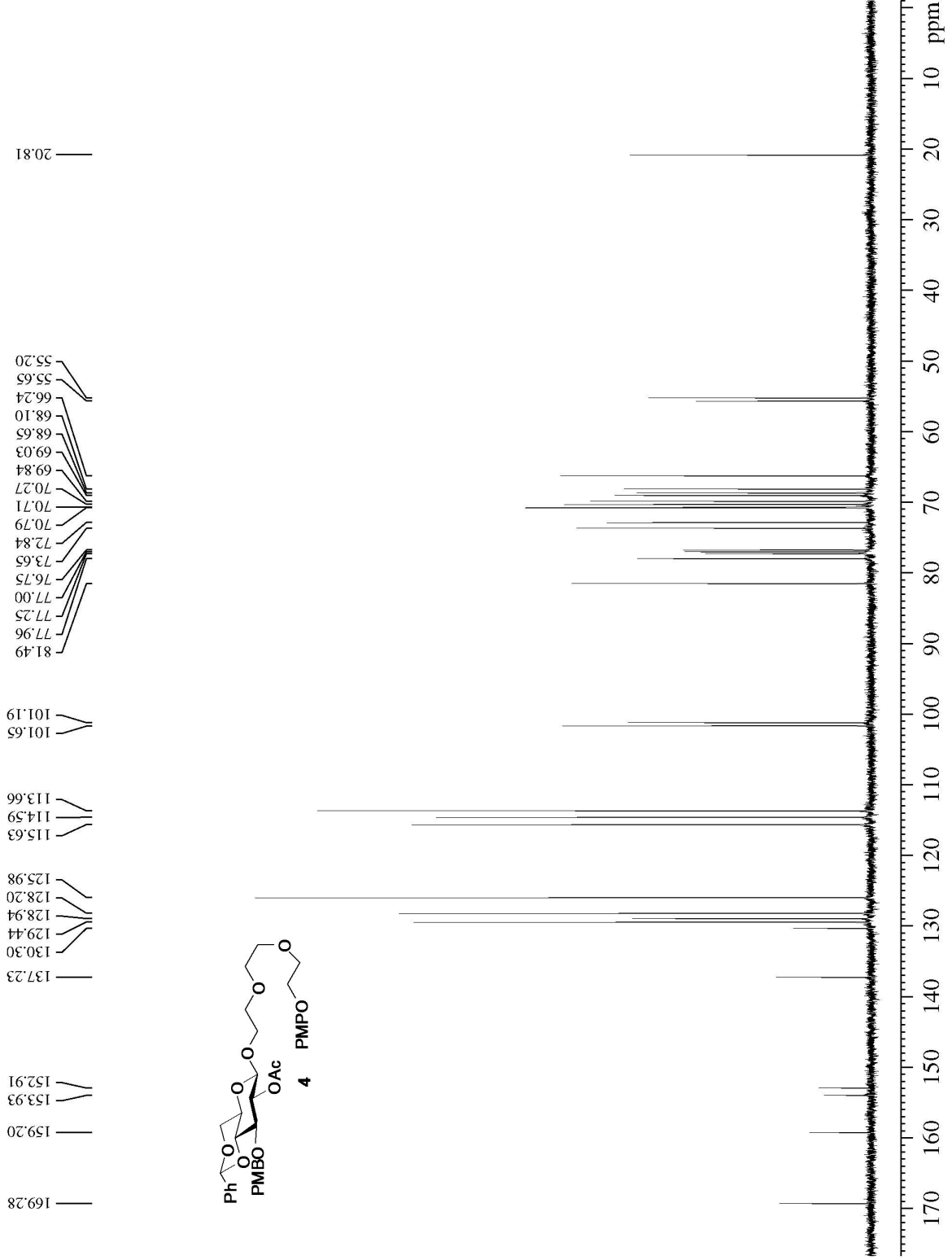
F2 - Acquisition Parameters

Date_ 20150514
 Time 15.11
 INSTRUM spect
 PROBHD 5 mm PABBO BB-
 PULPROG zgdc
 TD 65536
 SOLVENT CDCl3
 NS 130
 DS 4
 SWH 29761.904 Hz
 FIDRES 0.454131 Hz
 AQ 1.1010048 sec
 RG 203
 DW 16.800 usec
 DE 6.50 usec
 TE 1156.5 K
 D1 2.0000000 sec
 D11 0.0300000 sec
 TD0 1

===== CHANNEL f1 =====
 NUC1 13C
 P1 8.50 usec
 PL1 0.30 dB
 PL1W 90.1862531 W
 SFO1 125.7955118 MHz

===== CHANNEL f2 =====
 CPDPRG12 waltz16
 NUC2 1H
 PCED2 80.00 usec
 PL2 1.30 dB
 PL12 16.00 dB
 PL12W 15.30635643 W
 PL12W 0.51864696 W
 SFO2 500.2320009 MHz

F2 - Processing parameters
 SI 32768
 SF 125.7829419 MHz
 WDW EM
 SSB 0
 LB 1.00 Hz
 GB 0
 FC 1.40



BM-AM-49PS2 in CDCl3

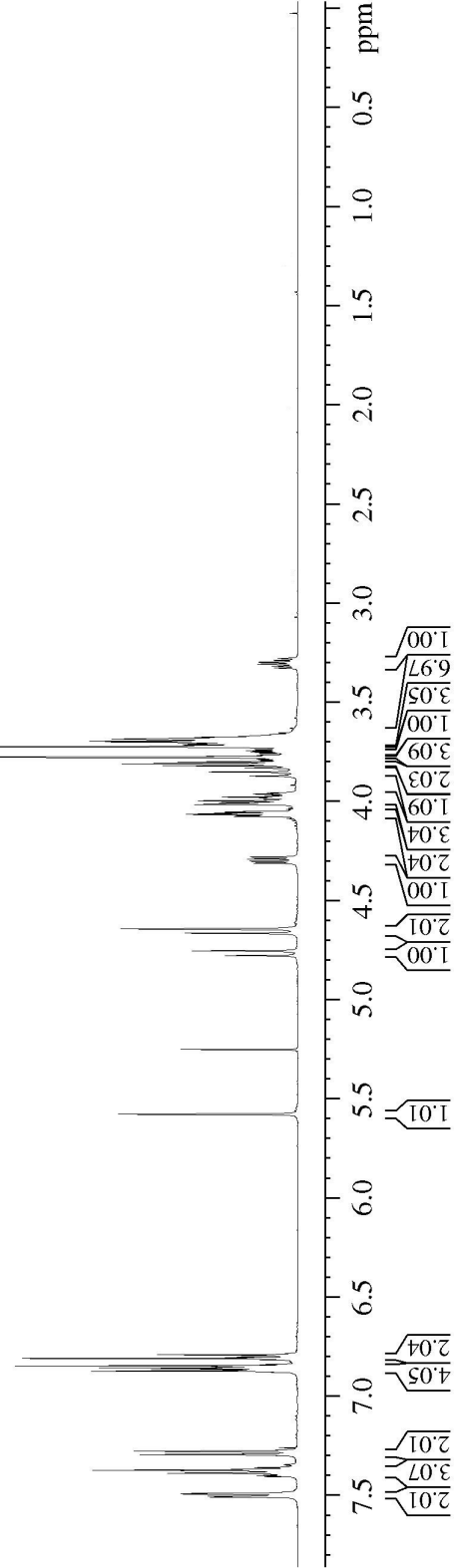
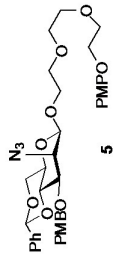
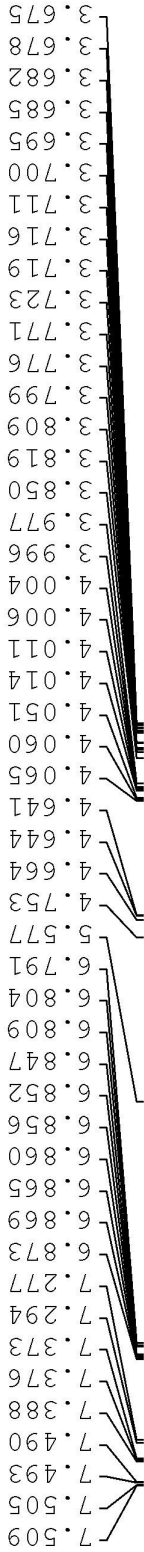


Current Data Parameters
NAME BM-AM-49PS2
PROCNO 140
PROCNO 1

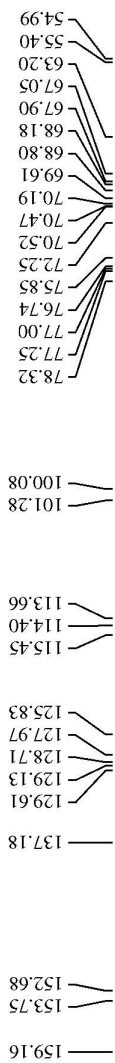
F2 - Acquisition Parameters
Date_ 20150528
Time 16.24
INSTRUM spect
PROBHD 5 mm PABBO BB-
PULPROG zg30
TD 65536
SOLVENT CDCl3
NS 12
DS 2
SWH 10330.578 Hz
FIDRES 0.157632 Hz
AQ 3.1719425 sec
RG 22.6
DW 48.400 usec
DE 6.50 usec
TE 1232.5 K
PL 1.0000000 sec
TD0 1

==== CHANNEL f1 =====
NUC1 1H
P1 14.25 usec
PL1 1.30 dB
PL1W 15.30635643 W
SFO1 500.2330891 MHz

F2 - Processing Parameters
SI 32768
SF 500.2330150 MHz
WDW EM
SSB 0
LB 0.30 Hz
GB 0
PC 1.00



BM-AM-49PS2 in CDCl3



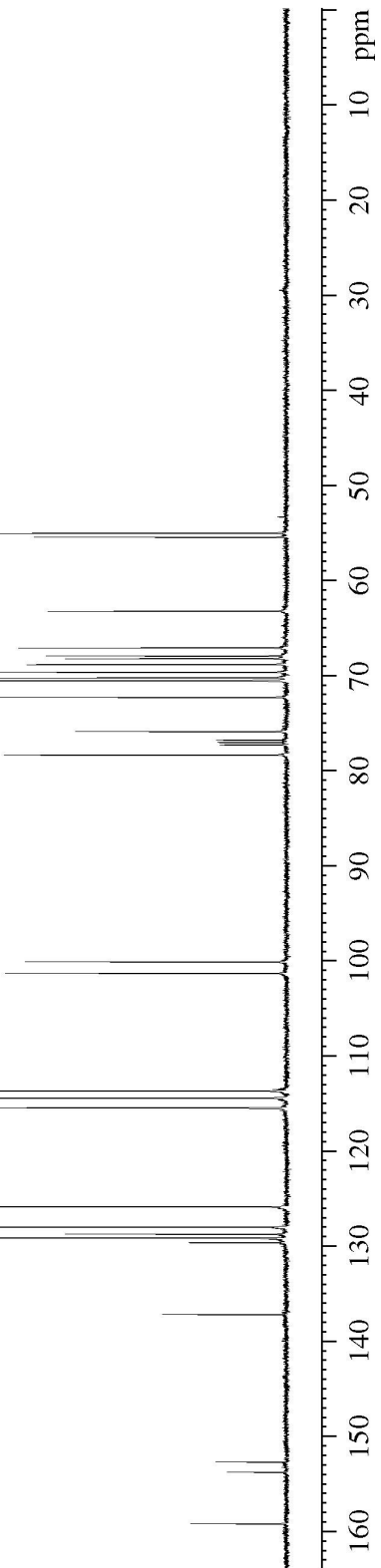
Current Data Parameters
 NAME BM-AM-49PS2
 EXPNO 141
 PROCNO 1

F2 - Acquisition Parameters
 Date_ 20150929
 Time 16:27
 INSTRUM spect
 PROBHD 5 mm PABBO BB-
 PULPROG zgpg
 TD 65536
 SOLVENT CDCl3
 NS 40
 DS 4
 SWH 29761.904 Hz
 FIDRES 0.454131 Hz
 AQ 1.1010048 sec
 SFO1 125.7629693 MHz
 DW 16.800 usec
 DE 6.50 usec
 TE 1237.7 K
 D1 2.00000000 sec
 D11 0.03000000 sec
 TD0 1

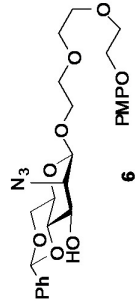
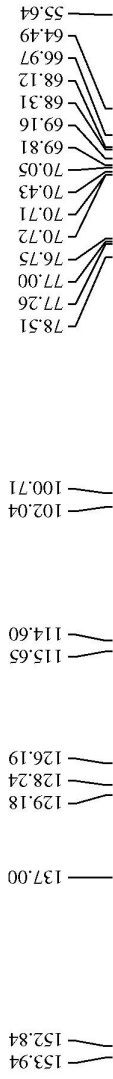
==== CHANNEL f1 =====
 NUC1 13C
 P1 9.50 usec
 PL1 0.50 dB
 SFO1 125.7629693 MHz
 SFO2 125.7629693 MHz

==== CHANNEL f2 =====
 CPDPRG2 waitz16
 NUC2 1H
 P2 80.00 usec
 PL2 1.30 dB
 PL12 16.00 dB
 PL2W 15.30635643 W
 PL12W 0.51864696 W
 SFO2 500.2320009 MHz

F2 - Processing Parameters
 SI 32768
 SF 125.7629693 MHz
 WDW EM
 SSB 0
 LB 1.00 Hz
 GB 0
 PC 1.40



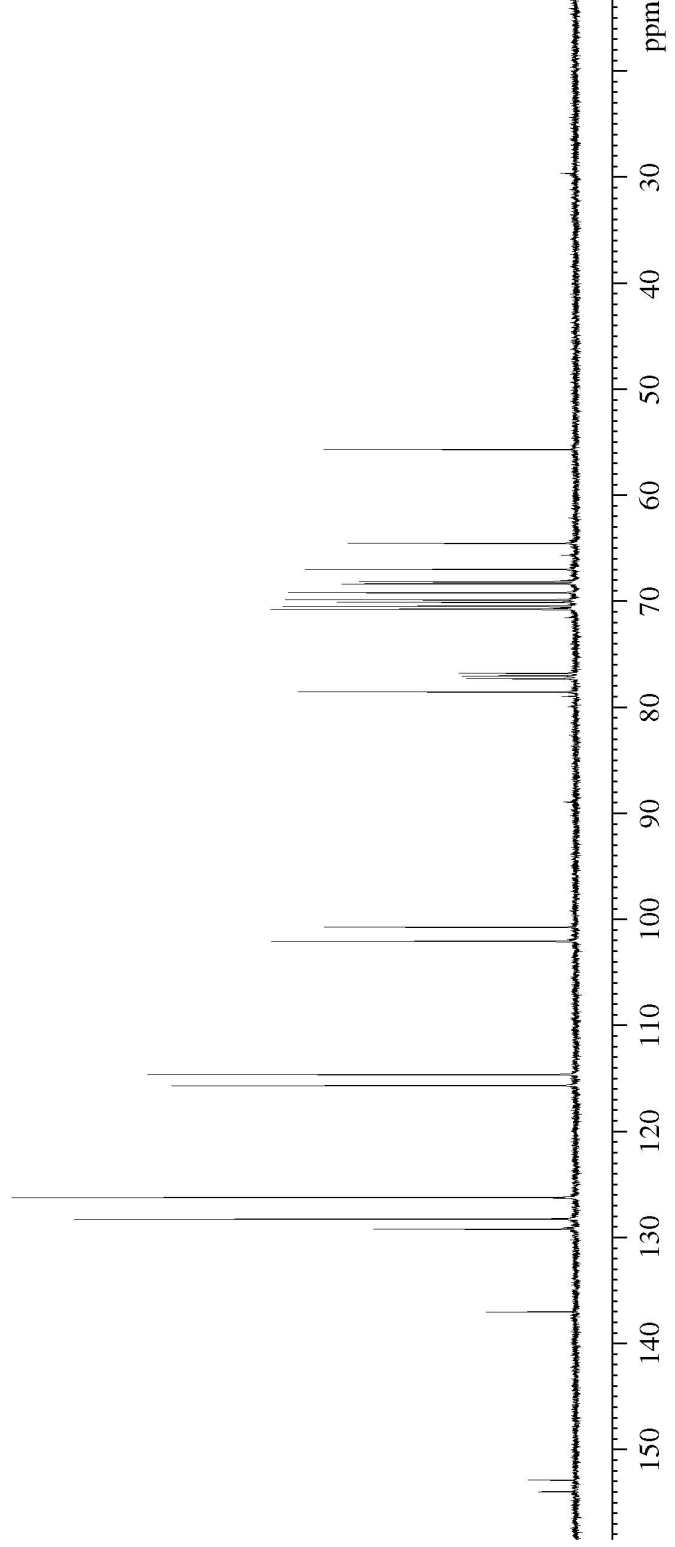
BM-AM-50PS in CDCl3



Current Data Parameters
 NAME BM-AM-50PS
 EXPNO 101
 PROCNO 1

F2 - Acquisition Parameters
 Date_ 20150529
 Time 15.41
 INSTRUM spect
 PROBHD 5 mm PABBO BB-
 PULPROG zgdc
 TD 65536
 SOLVENT CDCl3
 NS 74
 DS 4
 SWH 29761.904 Hz
 FIDRES 0.454131 Hz
 AQ 1.1010048 sec
 RG 203
 DW 16.800 usec
 DE 6.50 usec
 TE 1250.7 K
 D1 2.00000000 sec
 D11 0.03000000 sec
 TDO 1

===== CHANNEL f1 =====
 NUC1 13C
 P1 9.50 usec
 PL1 -0.50 dB
 PL1W 90.18825531 W
 SFO1 125.7955118 MHz
 ===== CHANNEL f2 =====
 CDEPRG12 waltz16
 NUC2 1H
 PCPD2 80.00 usec
 PL2 1.30 dB
 PL12 16.00 dB
 PL2W 15.30635643 W
 PL12W 0.51864696 W
 SFO2 500.2320009 MHz
 F2 - Processing parameters
 SI 32768
 SF 125.7829452 MHz
 REW EM
 SSB 0
 LB 1.00 Hz
 GB 0
 PC 1.40



BM-AM-5IPS in CDCl3



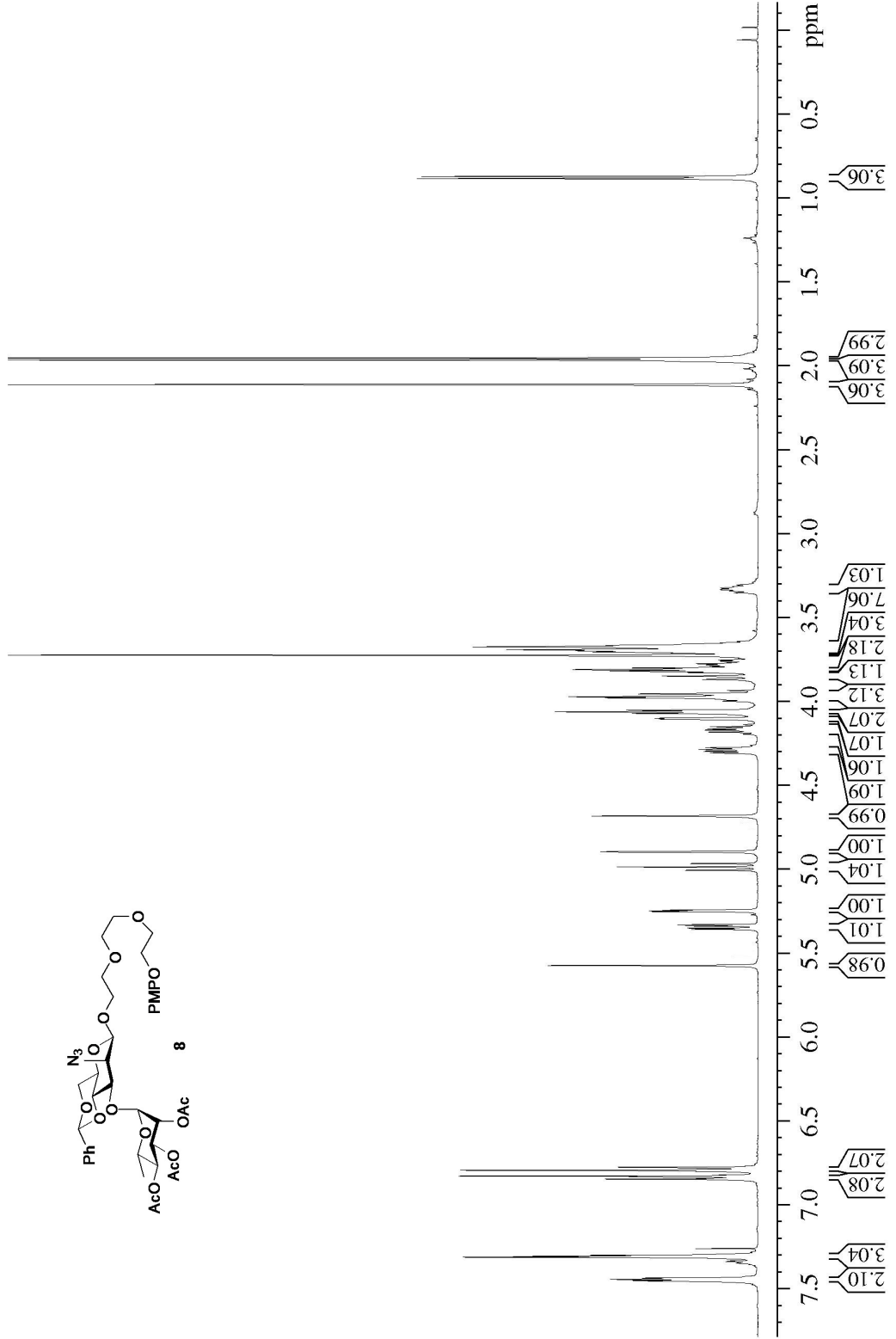
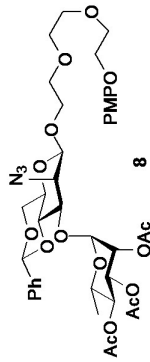
Current Data Parameters
NAME BM-AM-5IPS
EXPNO 10
PROCNO 1

F2 - Acquisition Parameters
Date_ 20150605
Time 10.02
INSTRUM spect
PROBHD 5 mm PABBO BBO
PULPROG zgpg30
TD 65536
SOLVENT CDCl3
NS 16
DS 2
SWH 10330.578 Hz
FIDRES 0.157632 Hz
AQ 3.1719425 sec
RG 36
DW 48.400 usec
DE 6.50 usec
TE 1442.0 K
D1 1.00000000 sec
TD0 1

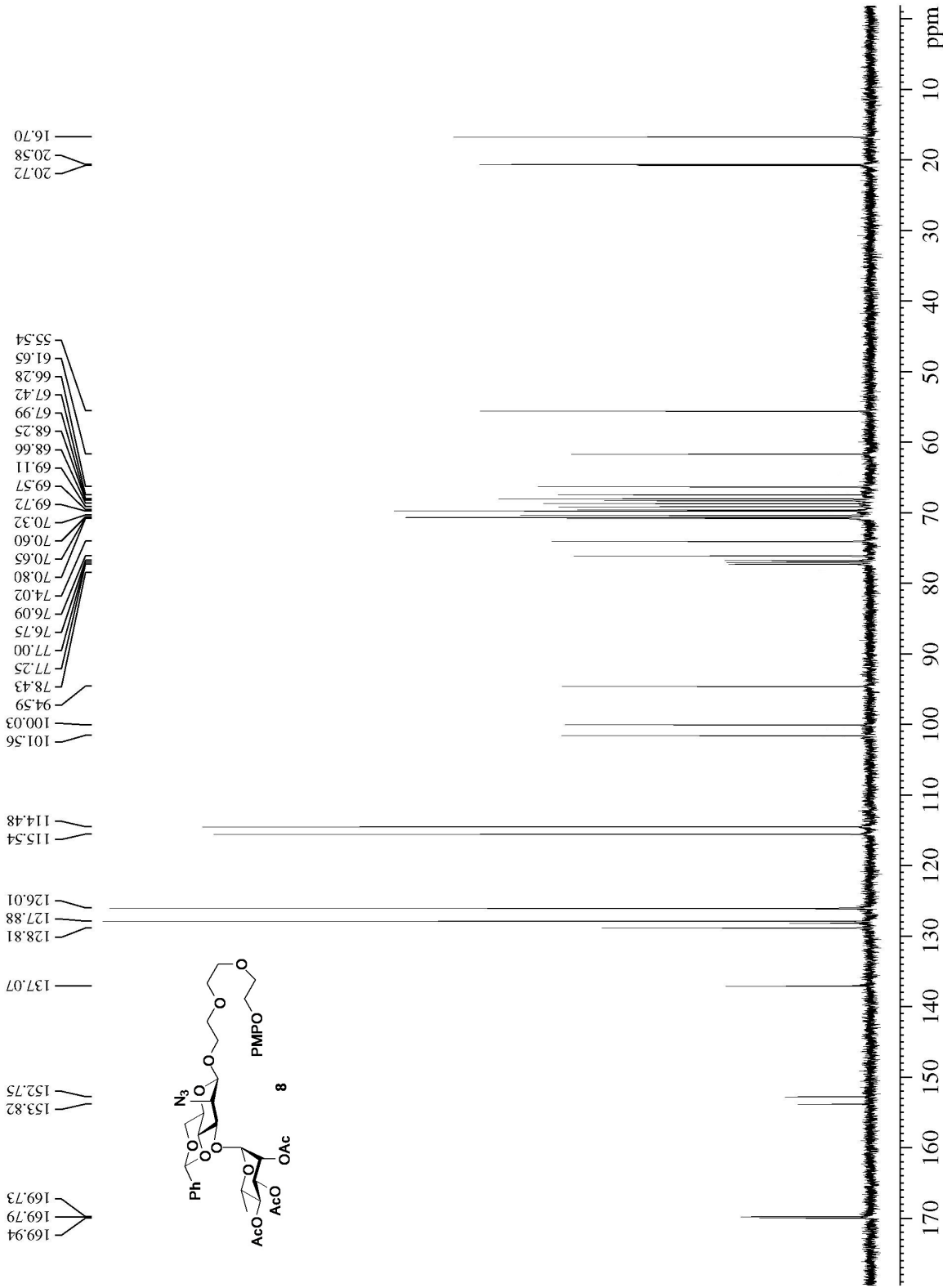
==== CHANNEL f1 =====
NUC1 1H
P1 14.25 usec
PL1 1.30 dB
PL1W 15.30635643 W
SFO1 500.2330891 MHz

F2 - Processing parameters
SI 131072
SF 500.2300152 MHz
WDW EM
SSB 0
LB 0.30 Hz
GB 0
PC 1.00

7.455
7.451
7.443
7.436
7.312
7.307
7.300
7.299
7.846
6.833
6.828
6.794
6.775
5.573
5.330
5.252
5.249
5.245
5.242
4.985
4.896
4.894
4.683
4.103
4.100
4.070
4.061
4.051
3.978
3.971
3.954
3.848
3.819
3.810
3.800
3.724
3.705
3.697
3.695
3.690
3.674
3.674
3.667
3.658
2.111
1.964
1.952
0.883
0.871



BM-AM-51PS in CDCl3



Current Data Parameters
NAME BM-AM-51PS
EXNO 11
PROCNO 1

F2 - Acquisition Parameters
Date_ 20150605
Time 10.07
INSTRUM spect
PROBHD 5 mm F4BBO BB-
PULPROG zgpg
TD 65536
SOLVENT CDCl3
NS 55
DS 4
SWH 29761.904 Hz
FIDRES 0.454131 Hz
AQ 1.1010048 sec
RG 203
DW 16.800 usec
DE 6.50 usec
TE 1440.0 K
D1 2.0000000 sec
D11 0.0300000 sec
TD0 1

==== CHANNEL f1 =====
NUC1 13C
P1 9.50 usec
PL1 -0.50 dB
PL1W 90.18825531 W
SFO1 125.7955118 MHz

==== CHANNEL f2 =====
CPDPRG[2 waltz16
NUC2 1H
PCPD2 80.00 usec
PL2 1.30 dB
PL12 16.00 dB
PL2W 15.30635643 W
PL12W 0.51864696 W
SFO2 500.2320009 MHz

F2 - Processing parameters
SI 32768
SF 125.7829520 MHz
WDW EM
SSB 0
LB 1.00 Hz
GB 0
PC 1.40



```

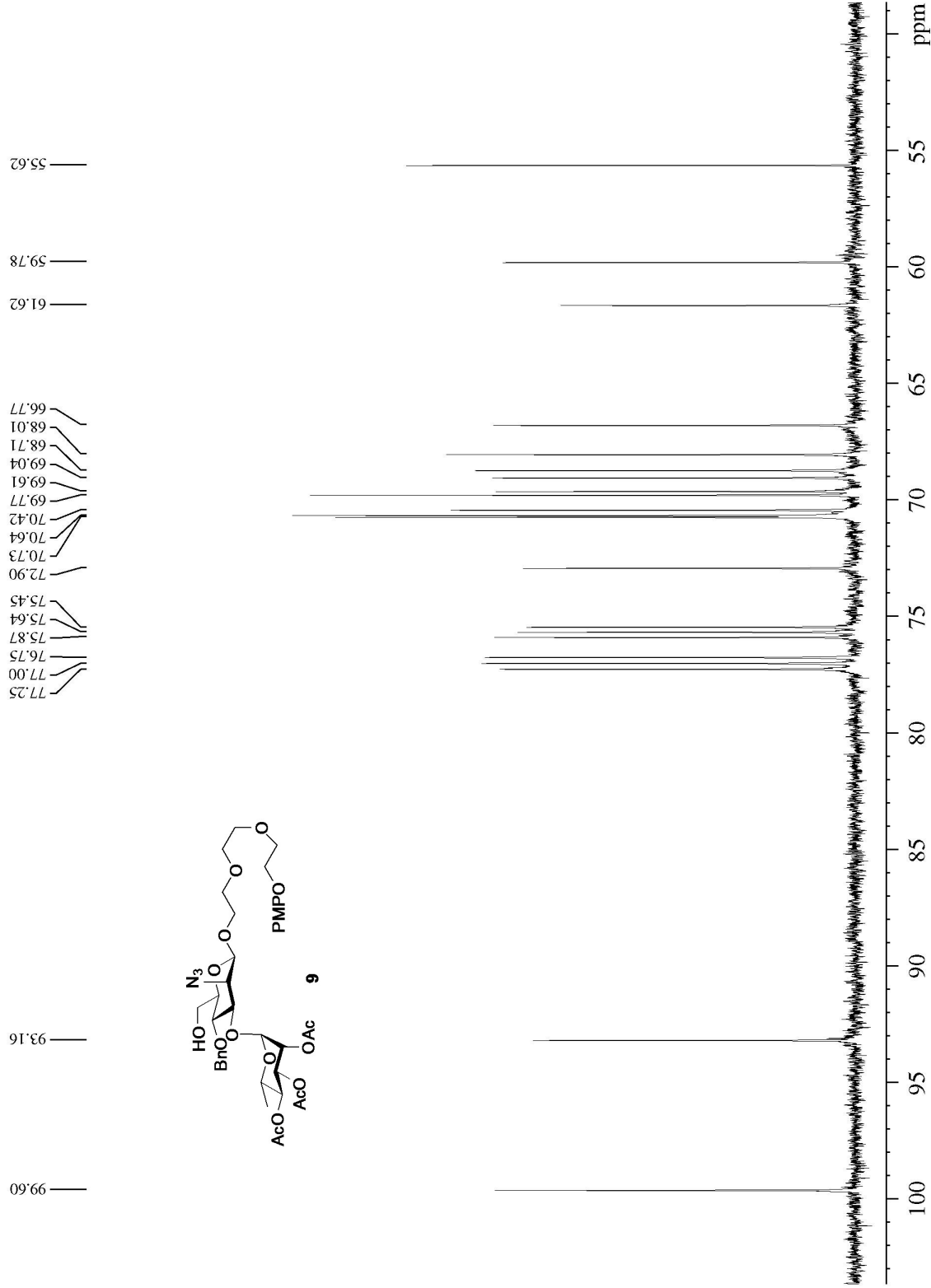
Current Data Parameters
NAME      BM-AM-52TCTPS
EXPNO    11
PROCNO   1

F2 - Acquisition Parameters
Date_    20150610
Time     10.31
INSTRUM spect
PROBHD   5 mm PABBO BB-
PULPROG zgpg30
SOLVENT  CDCl3
NS       138
DS       4
SWH      29761.904 Hz
FIDRES   0.454131 Hz
AQ       1.1010046 sec
RG       203
DE       16.800 usec
TE       300.2 K
D1       2.00000000 sec
D11      0.03000000 sec
TD0      1

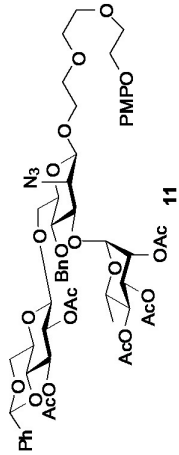
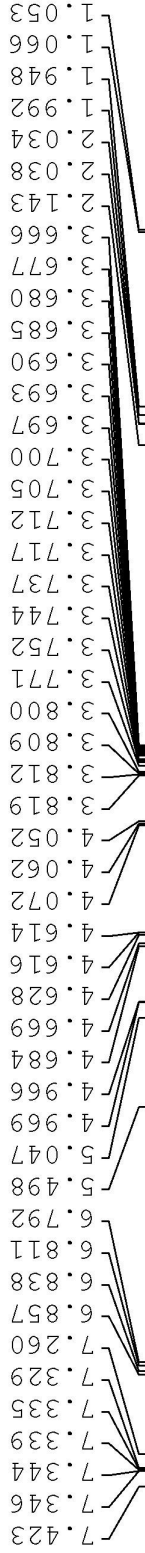
===== CHANNEL f1 =====
NUC1     13C
P1       9.50 usec
PL1      -0.50 dB
PL1W     90.18825531 W
SFO1     125.7955118 MHz

===== CHANNEL f2 =====
CPDPRG2  waltz16
NUC2     1H
PCPD2    80.00 usec
PL2      1.30 dB
PL12     16.00 dB
PL12W    15.30635643 W
PL12W    0.51864696 W
SFO2     500.2320009 MHz

F2 - Processing parameters
SI       131072
SF       125.7829446 MHz
WDW      EM
SSB      0
LB       1.00 Hz
GB       0
PC       1.40
    
```



BM-AM-54PS in CDCl3

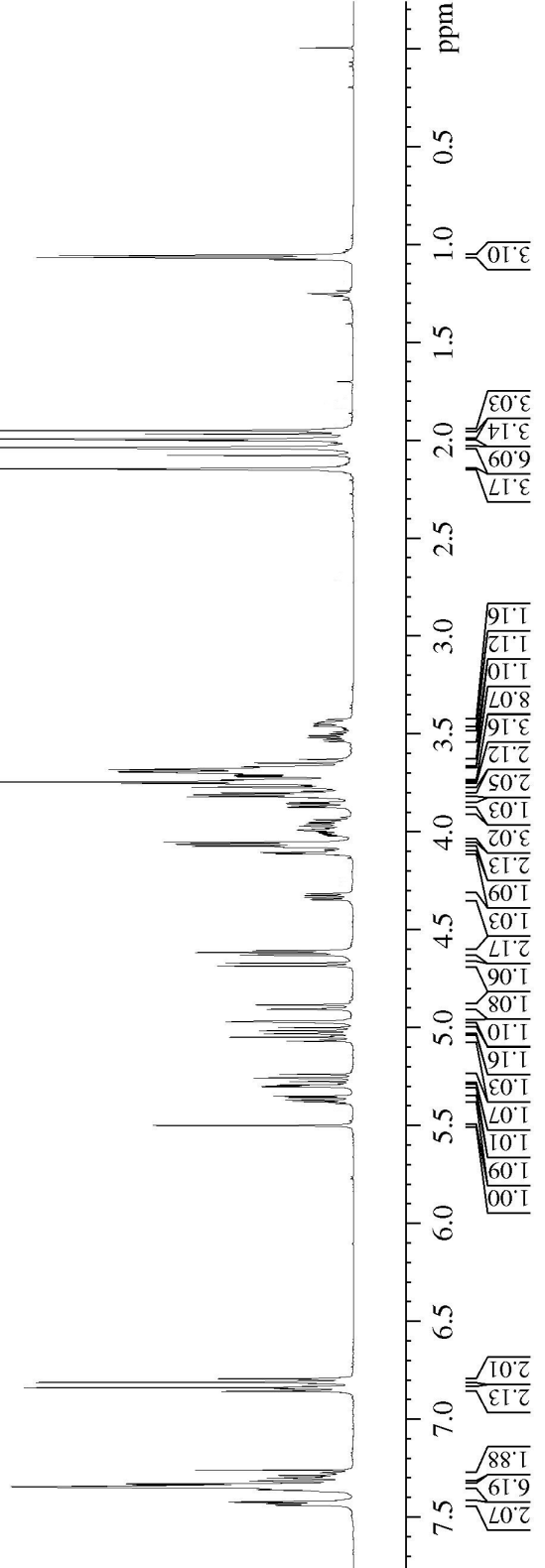


Current Data Parameters
NAME BM-AM-54PS
EXPNO 60
PROCNO 1

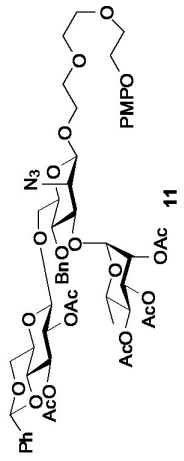
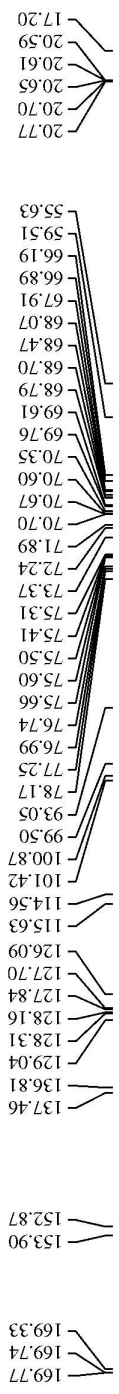
F2 - Acquisition Parameters
Date_ 20150916
Time 14.25
INSTRUM spect
PROBHD 5 mm PABBO BB-
PULPROG zg30
TD 65536
SOLVENT CDCl3
NS 16
DS 2
SWH 10330.578 Hz
FIDRES 0.157632 Hz
AQ 3.1719425 sec
RG 57
DW 48.400 usec
DE 152.50 usec
TE 300.2 K
D1 1.00000000 sec
TD0 1

===== CHANNEL f1 =====
NUC1 1H
P1 14.25 usec
PL1 1.30 dB
PL1W 15.30635643 W
SFO1 500.2330891 MHz

F2 - Processing Parameters
SI 32768
SF 500.131072 MHz
RG 655.36
SSB 0
LB 0.30 Hz
GB 0
PC 1.00



BM-AM-54PS in CDCl3



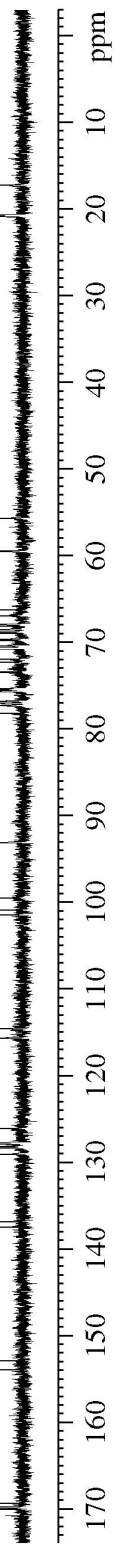
Current Data Parameters
 NAME BM-AM-54PS
 EXPNO 63
 PROCNO 1

F2 - Acquisition Parameters
 Date_ 20150616
 Time 11.46
 INSTRUM spect
 PROBHD 5 mm PABBO BB-
 PULPROG zgdc
 TD 65536
 SOLVENT CDCl3
 NS 133
 DS 4
 SWH 29761.904 Hz
 FIDRES 0.454131 Hz
 AQ 1.1010048 sec
 RG 203
 DW 16.800 usec
 DE 6.50 usec
 TE 1523.2 K
 D1 2.00000000 sec
 D11 0.03000000 sec
 TDO 1

===== CHANNEL f1 =====
 NUC1 13C
 P1 9.50 usec
 PL1 -0.50 dB
 PL1W 90.18925531 W
 SF01 125.7955118 MHz

===== CHANNEL f2 =====
 CPDPRG2 waltz16
 NUC2 1H
 FCPD2 80.00 usec
 PL2 1.30 dB
 PL12 16.00 dB
 PL2W 15.30635643 W
 PL12W 0.51864696 W
 SF02 500.2320009 MHz

F2 - Processing Parameters
 SI 331072
 SF 125.7829441 MHz
 WDW EM
 SSB 0
 LB 1.00 Hz
 GB 0
 PC 1.40



BM-AM-58PS in CDCl3



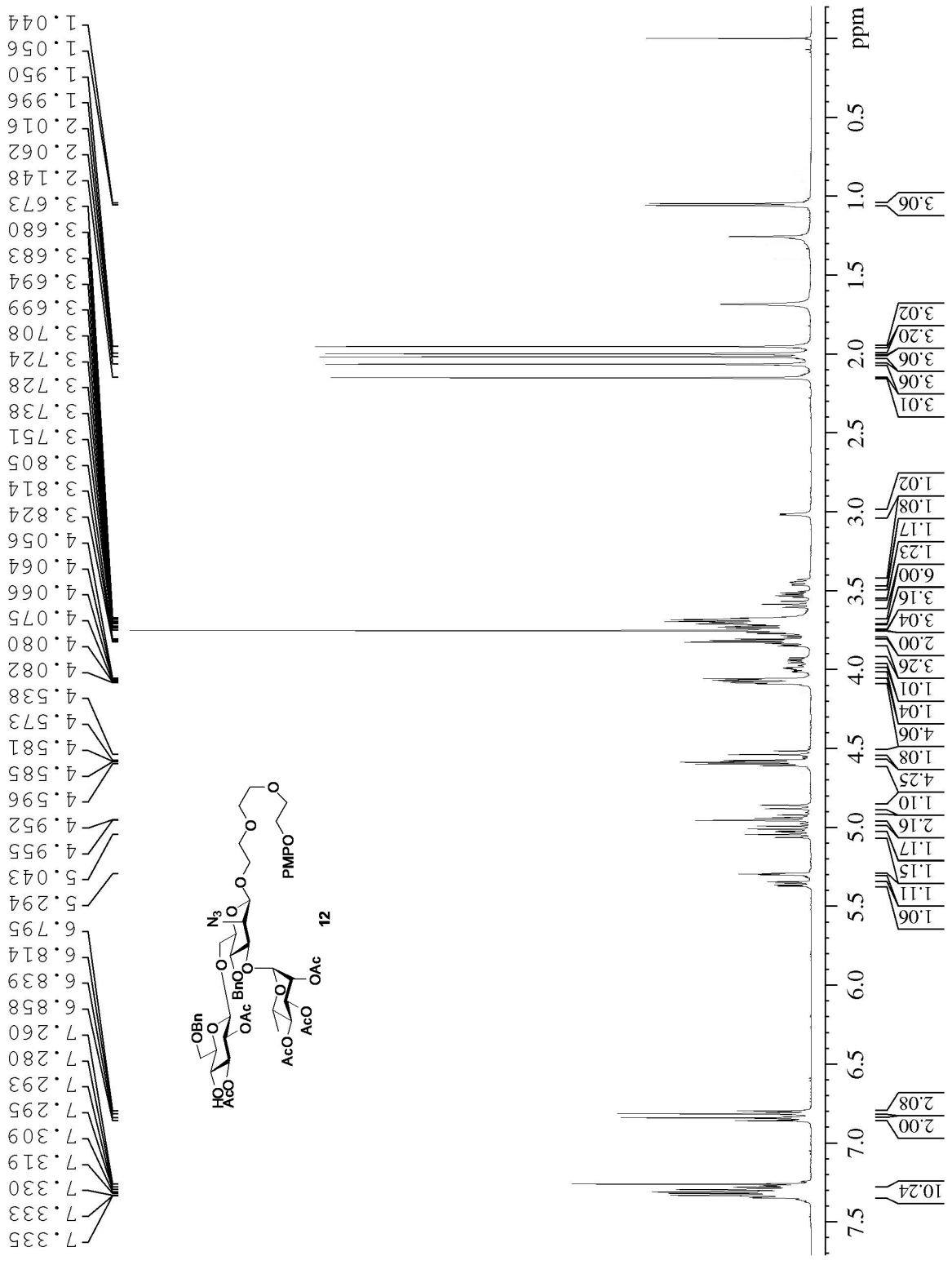
```

Current Data Parameters
NAME      BM-AM-58PS
EXPNO     60
PROCNO    1

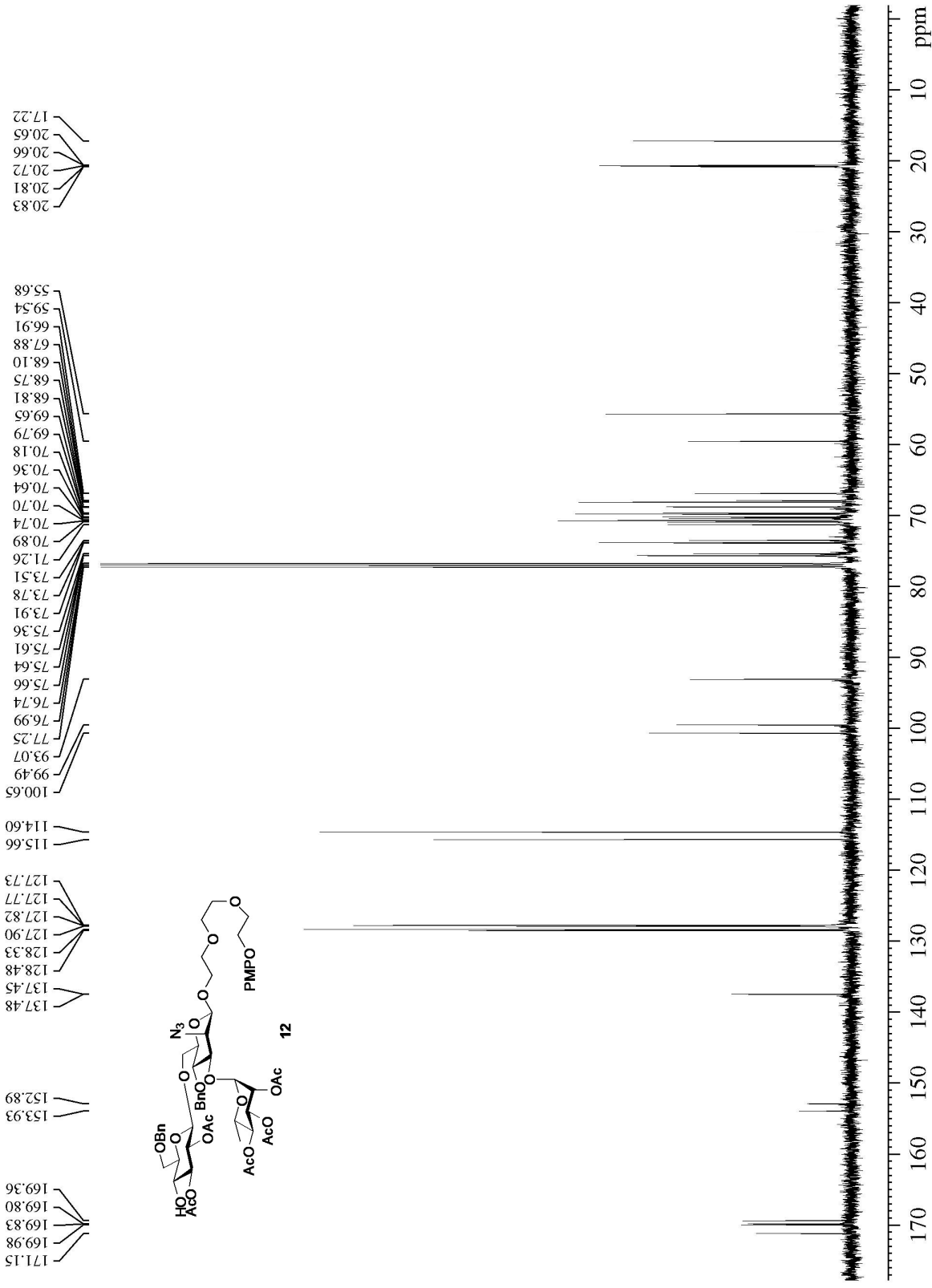
F2 - Acquisition Parameters
Date_     20150728
Time      12.59
INSTRUM   spect
PROBHD    5 mm PABBO-430
PULPROG   zg30
TD         65536
SOLVENT   CDCl3
NS         16
DS         2
SWH        10330.576 Hz
FIDRES     0.157632 Hz
AQ         3.11719425 sec
RG         128
DQ         48.450 usec
DE         1483.5 K
TE         1.00000000 sec
D1         1
D0         1

===== CHANNEL f1 =====
NUC1       1H
P1         14.25 usec
PL1        0.30 dB
FLL        15.30635643 MHz
SFO1       500.2330891 MHz

F2 - Processing parameters
SI         131072
SF         500.23300156 MHz
WDW        EM
SSB        0
LB         0.30 Hz
GB         0
PC         1.00
  
```



BM-AM-58PS in CDCl3



Current Data Parameters
 NAME BM-AM-58PS
 EXPNO 63
 PROCNO 1

F2 - Acquisition Parameters
 Date_ 20150728
 Time 13.22
 INSTRUM spect
 PULPROG zgpg30
 FIDRES 5 mm PABBO B2
 TD 65536
 SOLVENT CDCl3
 NS 602
 DS 4
 SWH 28761.904 Hz
 FIDRES 0.454131 Hz
 AQ 1.1010048 sec
 RG 803
 DW 16.800 usec
 DE 16.50 usec
 TE 1493.8 K
 D1 2.00000000 sec
 D11 0.03000000 sec
 TD0 1

===== CHANNEL f1 =====
 NUC1 13C
 P1 13.00 usec
 PL1 -0.50 dB
 PL1W 90.18825531 W
 SFO1 125.7955118 MHz

===== CHANNEL f2 =====
 CPDPRG2 waltz16
 NUC2 1H
 PCPD2 80.00 usec
 PL2 15.00 dB
 PL2W 15.30635643 W
 PL12W 0.51864696 W
 SFO2 500.2320005 MHz

F2 - Processing parameters
 SI 32768
 SF 125.7829388 MHz
 EQ EN
 WDW 0
 GB 0
 PC 1.40

BM-AM-18PENT in CDCl3

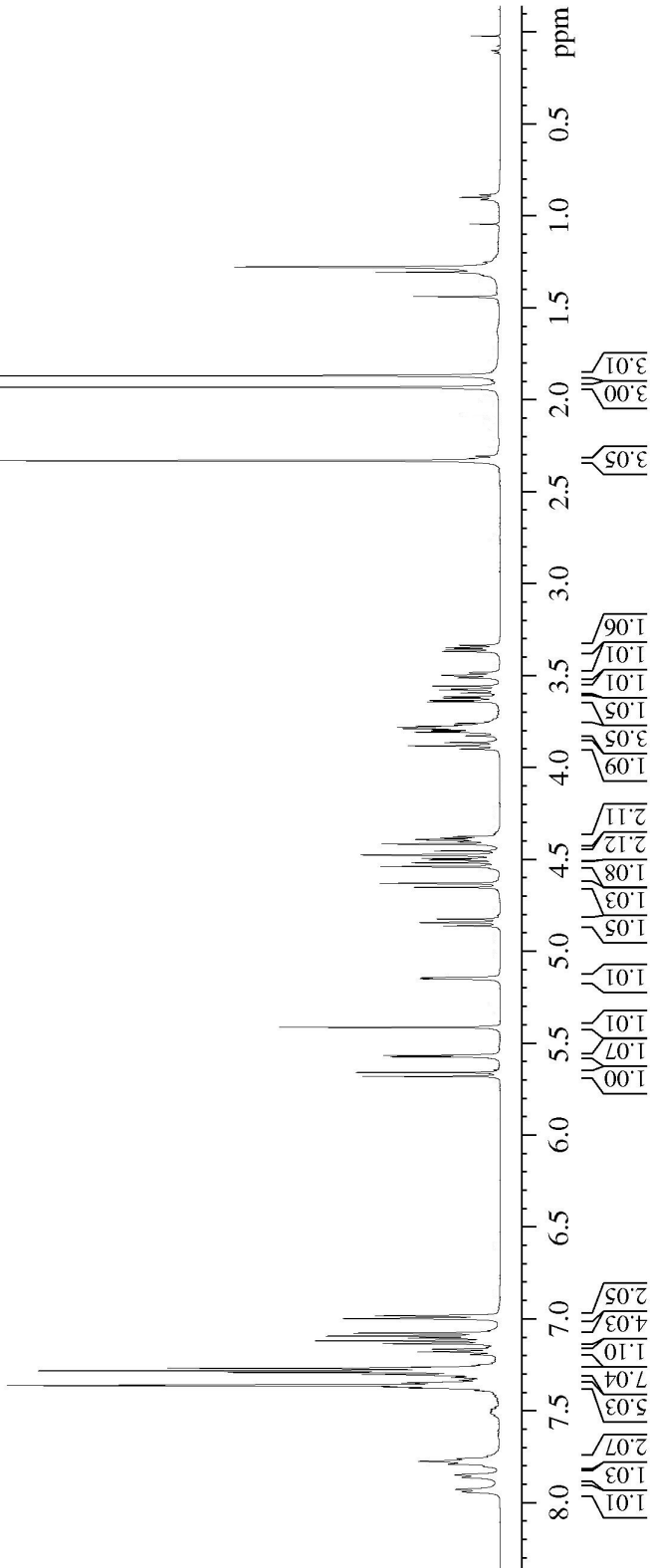
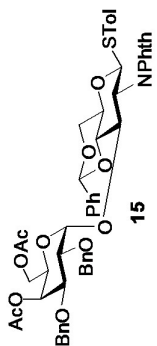
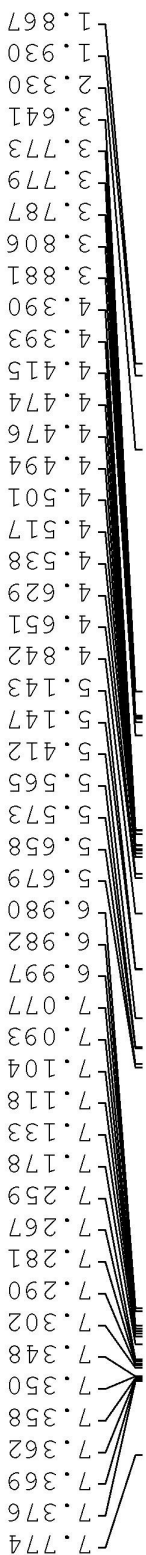


Current Data Parameters
NAME BM-AM-18PENT
PROCNO 10
PRGNO 1

F2 - Acquisition Parameters
Date_ 20150218
Time 10.03
INSTRUM spect
PROBHD 5 mm PABBO BB-
PULPROG zg30
TD 65536
SOLVENT CDCl3
NS 16
DS 2
SWH 10330.578 Hz
FIDRES 0.1157632 Hz
AQ 3.1719425 sec
RG 6
DE 48.40 usec
TE 61.50 usec
TD0 300.0 K
D1 1.00000000 sec
D11 1

==== CHANNEL f1 =====
NUC1 1H
P1 14.25 usec
PL1 1.30 dB
PL1W 15.30635643 W
SFO1 500.2330891 MHz

F2 - Processing Parameters
SI 320
SF 500.2300134 MHz
WDW EM
SSB 0
LB 0.30 Hz
GB 0
PC 1.00



BM-AM-18PENT in CDCl3

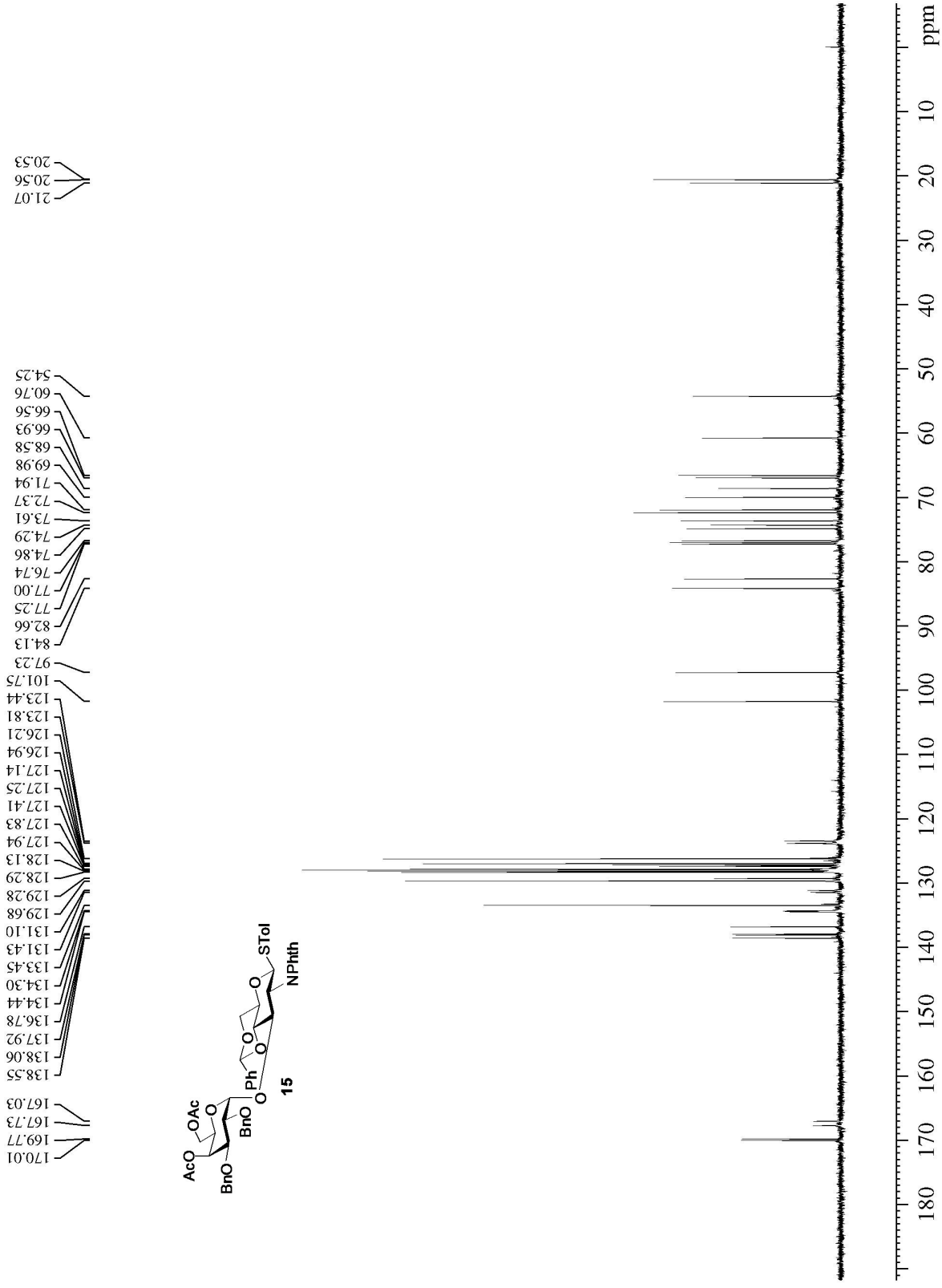
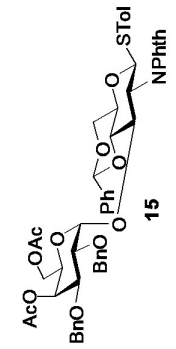


```

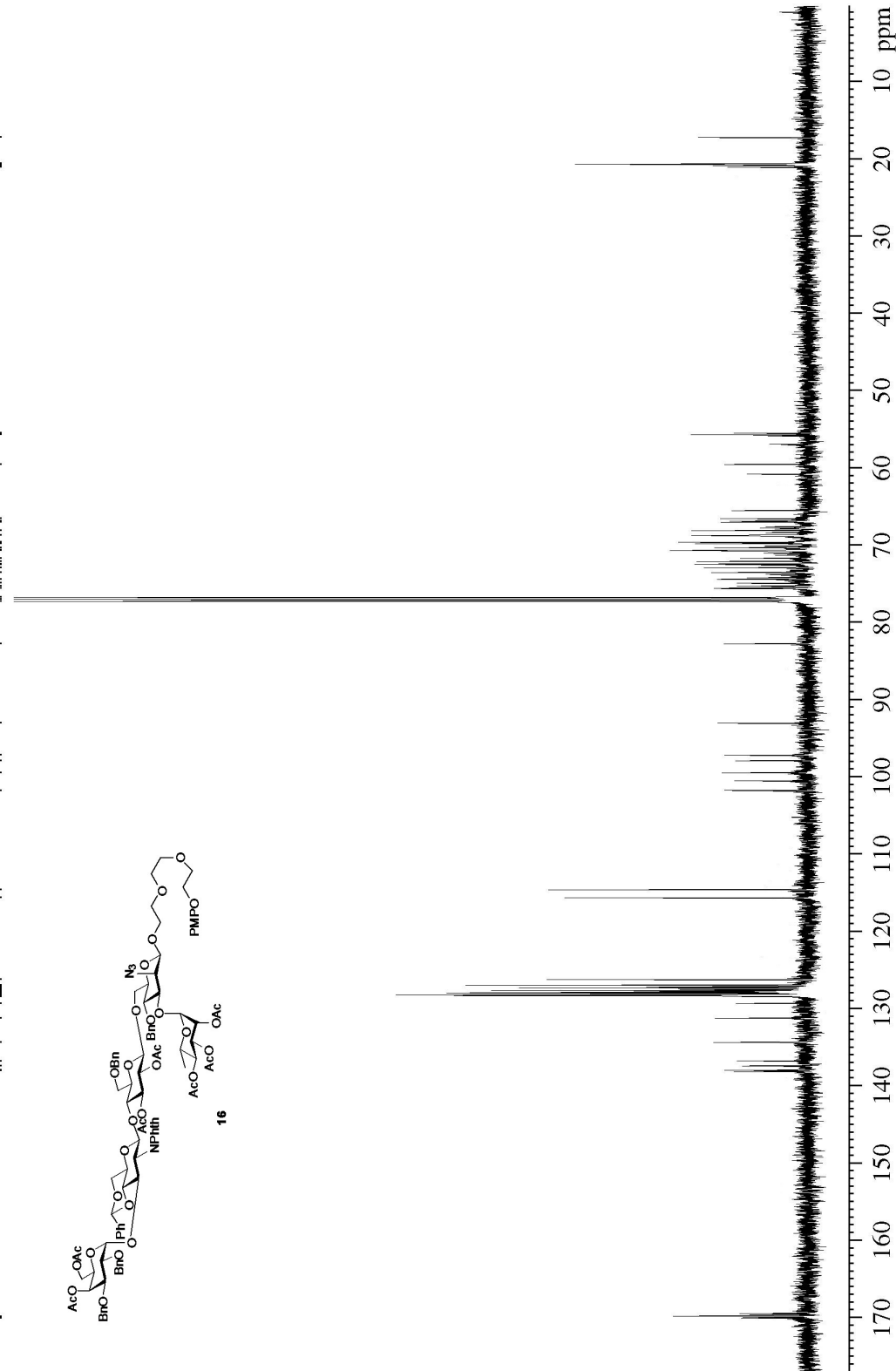
Current Data Parameters
=====
EXPNO      11
PROCNO     11
F2 - Acquisition Parameters
=====
File       20110108
Type      1D
Date_     10.10.08
INSTRUM   spect
PROBHD    5 mm PABBO BB-
PULPROG   zgdc
DOPROG    gmsg16
SOLVENT   CDCl3
NS         147
DS         4
SWH       29761.904 Hz
FIDRES    0.459131 Hz
AQ         1.10019203 sec
RG         65.0203
RC         16.800 usec
DE         300.0 K
TE         6.50 usec
TD         65536
D11        0.03000000 sec
TD0         1
===== CHANNEL f1 =====
NUC1       13C
P1         9.50 usec
PL1        -0.50 dB
PL1W       30.18825531 W
SFO1       125.7955118 MHz
===== CHANNEL f2 =====
CFPRG[2]   waltz16
NUC2       1H
P2         80.00 usec
PL2        19.00 dB
PL2W       15.306355643 W
PL12W      0.51864696 W
SFO2       500.2320009 MHz
F2 - Processing parameters
=====
SI         32768
SF         125.7829505 MHz
WDW        EM
SS         0
LB         1.00 Hz
GB         0
PC         1.40
  
```

20.53
20.56
21.07

54.25
60.76
66.56
66.93
68.58
69.98
71.94
72.37
73.61
74.29
74.86
76.74
77.00
77.25
82.66
84.13
97.23
101.75
123.44
123.81
126.21
126.94
127.14
127.25
127.41
127.83
127.94
128.13
128.29
129.28
129.68
131.10
131.43
133.45
134.30
134.44
136.78
137.92
138.06
138.55
167.03
167.73
169.77
170.01



BM-AM-60PS4AUG in CDCl3



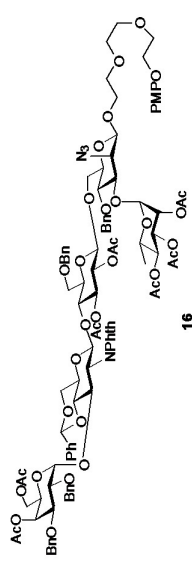
Current Data Parameters
 NAME BM-AM-60PS4AUG
 EXPNO 13
 PROCNO 1

F2 - Acquisition Parameters
 Date_ 20150804
 Time 10.23
 INSTRUM spect
 PROBHD 5 mm PABBO BB-
 PULPROG zgdc
 TD 65536
 SOLVENT CDCl3
 NS 789
 DS 4
 SWH 29761.904 Hz
 FIDRES 0.454131 Hz
 AQ 1.1010048 sec
 RG 16.803
 DW 6.500 usec
 DE 1.594 K
 TE 1594.1 K
 D1 2.00000000 sec
 D11 0.03000000 sec
 TD0 1

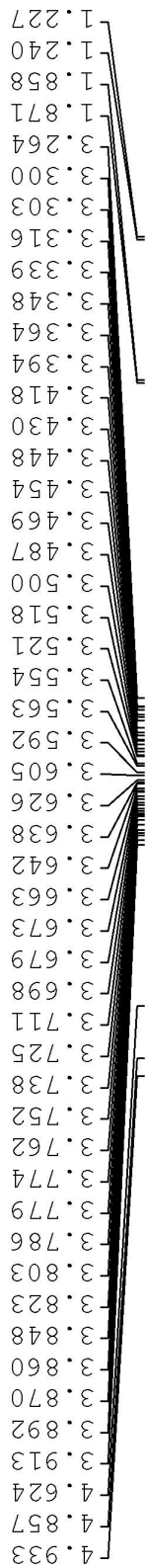
=====
 CHANNEL f1
 NUC1 13C
 P1 9.50 usec
 PL1 -0.50 dB
 PL1W 90.18825531 W
 SFO1 125.7955118 MHz

=====
 CHANNEL f2
 CPDPRG2 waltz16
 NUC2 1H
 P2 80.00 usec
 PCPD2 1.30 dB
 PL2 16.00 dB
 PL2W 15.30625643 W
 PL12W 0.51864696 W
 SFO2 500.2320009 MHz

F2 - Processing parameters
 SI 32768
 SF 125.7829396 MHz
 SWH 0
 SSB 0
 GB 0
 PC 1.40



BM-AM-PENTIFINAL in MeOD

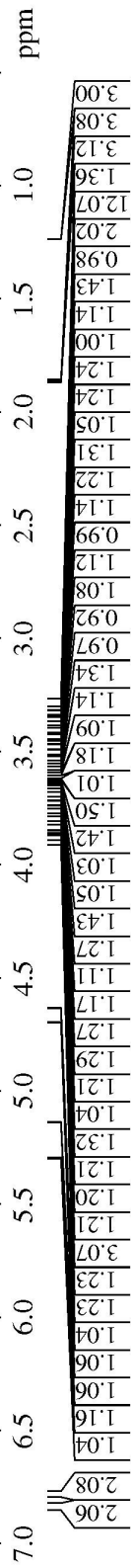
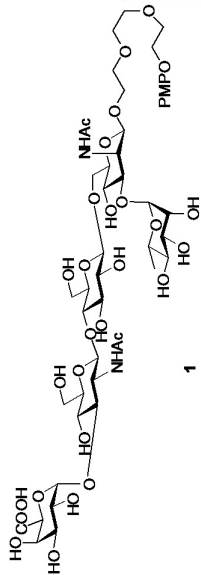


Current Data Parameters
 NAME BM-AM-PENTIFINAL
 EXPNO 220
 PROCNO 1

F2 - Acquisition Parameters
 Date_ 20151105
 Time 16.01
 INSTRUM spect
 PROBD 5 mm PABBO B8-
 PULPROG zgpg30
 TD 65536
 SOLVENT MeOD
 NS 128
 DS 2
 SWH 10330.575 Hz
 FIDRES 0.157632 Hz
 AQ 3.1719425 sec
 RG 128
 DW 48.400 usec
 DE 6.50 usec
 TE 2292.7 K
 D1 1.00000000 sec
 TD0 1

===== CHANNEL f1 =====
 NUC1 1H
 P1 14.25 usec
 PL1 1.30 dB
 PFL1 15.30635643 W
 SF01 500.2330891 MHz

F2 - Processing Parameters
 SI 131072
 SF 500.2300178 MHz
 WDW EM
 SSB 0
 LB 0
 GB 0
 PC 1.00





Current Data Parameters
NAME BM-AM-PENTA HSCOSY
EXENO 111
PROCNO 1

F2 - Acquisition Parameters
Date_ 20151210
Time 15.44
INSTRUM spect
PROBHD 5 mm PABBO BB-
PULPROG cosygpgf
TD 2048
SOLVENT MeOD
NS 32
DS 16
SWH 6684.492 Hz
FIDRES 3.263912 Hz
AQ 0.1531904 sec
RG 161
DW 74.800 usec
DE 6.50 usec
TE 2905.1 K
D0 0.00000300 sec
D1 1.48689198 sec
D13 0.00000400 sec
D16 0.00020000 sec
INO 0.00014975 sec

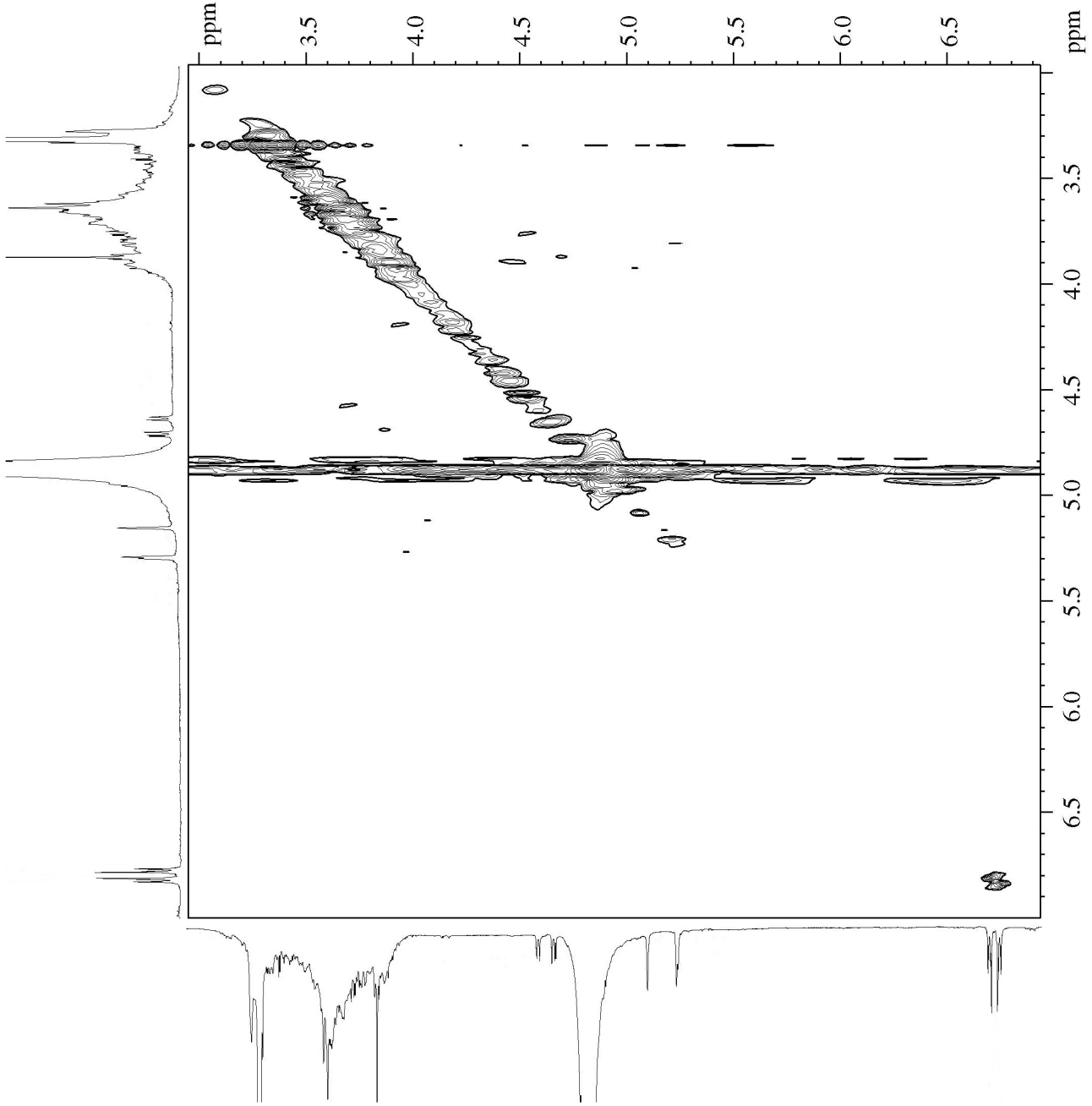
==== CHANNEL f1 =====
NUC1 1H
P0 14.25 usec
P1 14.25 usec
PL1 1.30 dB
PL1W 15.30635643 W
SF01 500.2330075 MHz

==== GRADIENT CHANNEL =====
GPNAM[1] SINE.100
GPZ1 10.00 %
P16 1000.00 usec

F1 - Acquisition parameters
TD 128
SF01 500.233 MHz
FIDRES 52.173840 Hz
SW 13.350 Ppm
FMODE QF

F2 - Processing parameters
SI 1024
SF 500.2300000 MHz
WDW SINE
SSB 0 Hz
LB 0
GB 0
PC 1.00

F1 - Processing parameters
SI 1024
MC2 QF
SF 500.2300000 MHz
WDW SINE
SSB 0 Hz
LB 0
GB 0





Current Data Parameters
 NAME BK-MH-PENTA_HSCOSY
 PROCNO 112

F2 - Acquisition Parameters
 Date_ 20151210
 Time_ 14:46

INSTRUM spect
 PROBEHD 5 mm FAREO BB-
 PULPROG hsgcsgpr12
 TD 1024
 NS 96
 DS 16
 SMH 6009.615 Hz
 FIDRES 5.960665 Hz
 AQ 0.0091246 sec
 RG 3203
 DW 83.200 usec
 DE 6.50 usec
 TE 300.2 K
 CHST2 145.000000
 D0 0.00000000 sec
 D1 1.50000000 sec
 D4 0.00172414 sec
 D5 0.00000000 sec
 D13 0.00000000 sec
 D16 0.00020000 sec
 D24 0.00086207 sec
 INO 0.00001985 sec
 ACOPIAS

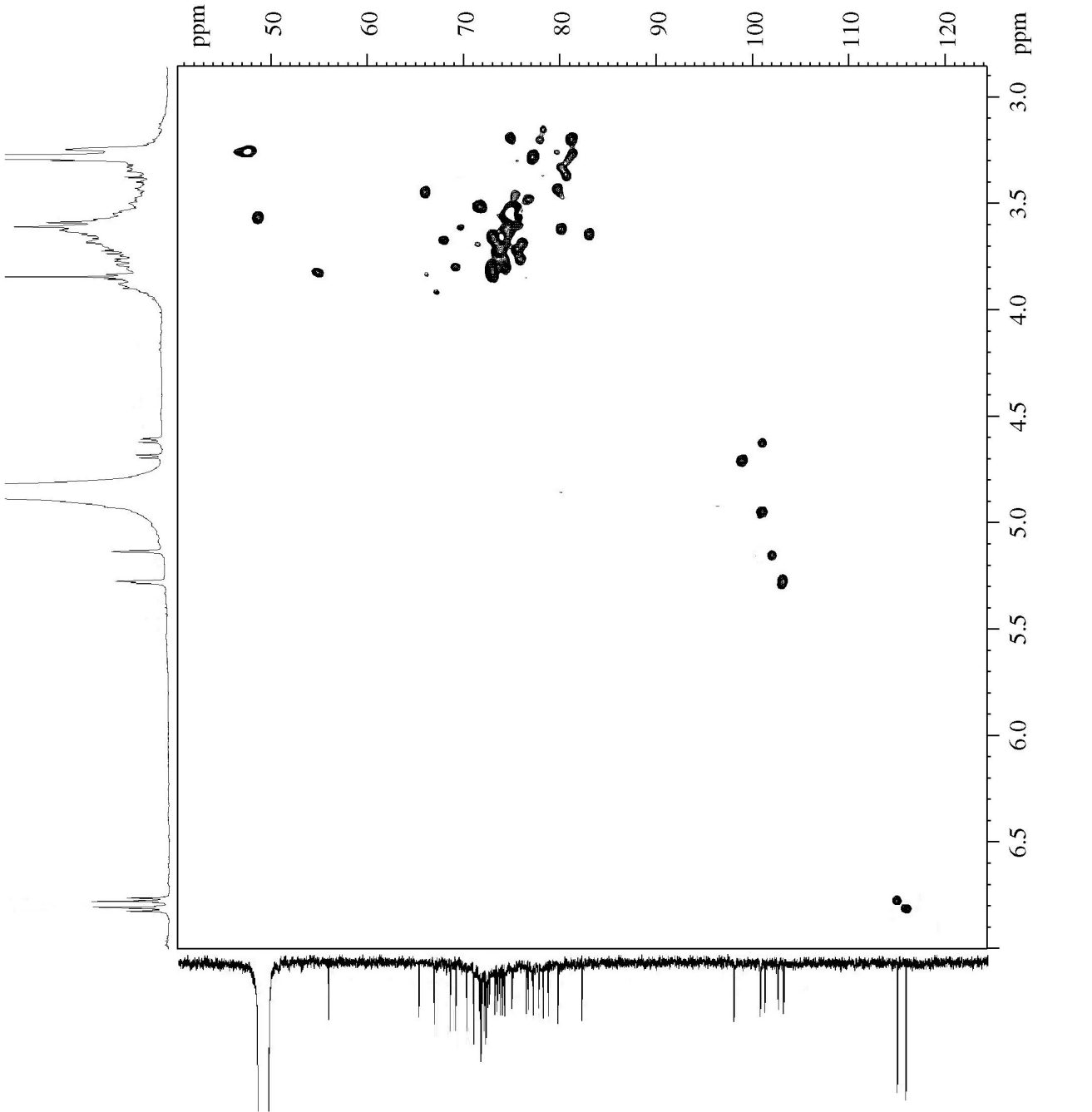
===== CHANNEL f1 =====
 NUC1 1H
 P1 14.25 usec
 PL1 0.00 dB
 F28 0.10 usec
 PL1 1.30 dB
 FLLW 15.30835643 W
 SFO1 500.230014 MHz

===== CHANNEL f2 =====
 CPDPRG2 gairp
 NUC2 13C
 P1 9.85 usec
 PL 13.00 usec
 P4 13.00 usec
 PCPD2 70.00 usec
 PL2 -0.50 dB
 PL12 7.00 dB
 PL13 7.00 dB
 PL1W 9.4037910 W
 SFO2 125.7951123 MHz

===== GRADIENT CHANNEL =====
 GPM1 0
 GPM2 0
 GPM3 0
 GPM4 0
 GPM5 0
 GPM6 0
 GPM7 0
 GPM8 0
 GPM9 0
 GPM10 0
 GPM11 0
 GPM12 0
 GPM13 0
 GPM14 0
 GPM15 0
 GPM16 0
 GPM17 0
 GPM18 0
 GPM19 0

F1 - Acquisition Parameters
 TD 256
 SFO1 125.79515 MHz
 FIDRES 96.000000 Hz
 SFO2 500.230013 MHz
 FWHW Echo-AntiEcho
 F2 - Processing parameters
 SI 1024
 SF 500.230013 MHz
 MDW QFINE
 SSB 0 Hz
 LB 0
 GB 0
 PC 1.00

F1 - Processing parameters
 SI 1024
 SF 125.79515 MHz
 MDW QFINE
 SSB 0 Hz
 LB 0
 GB 0



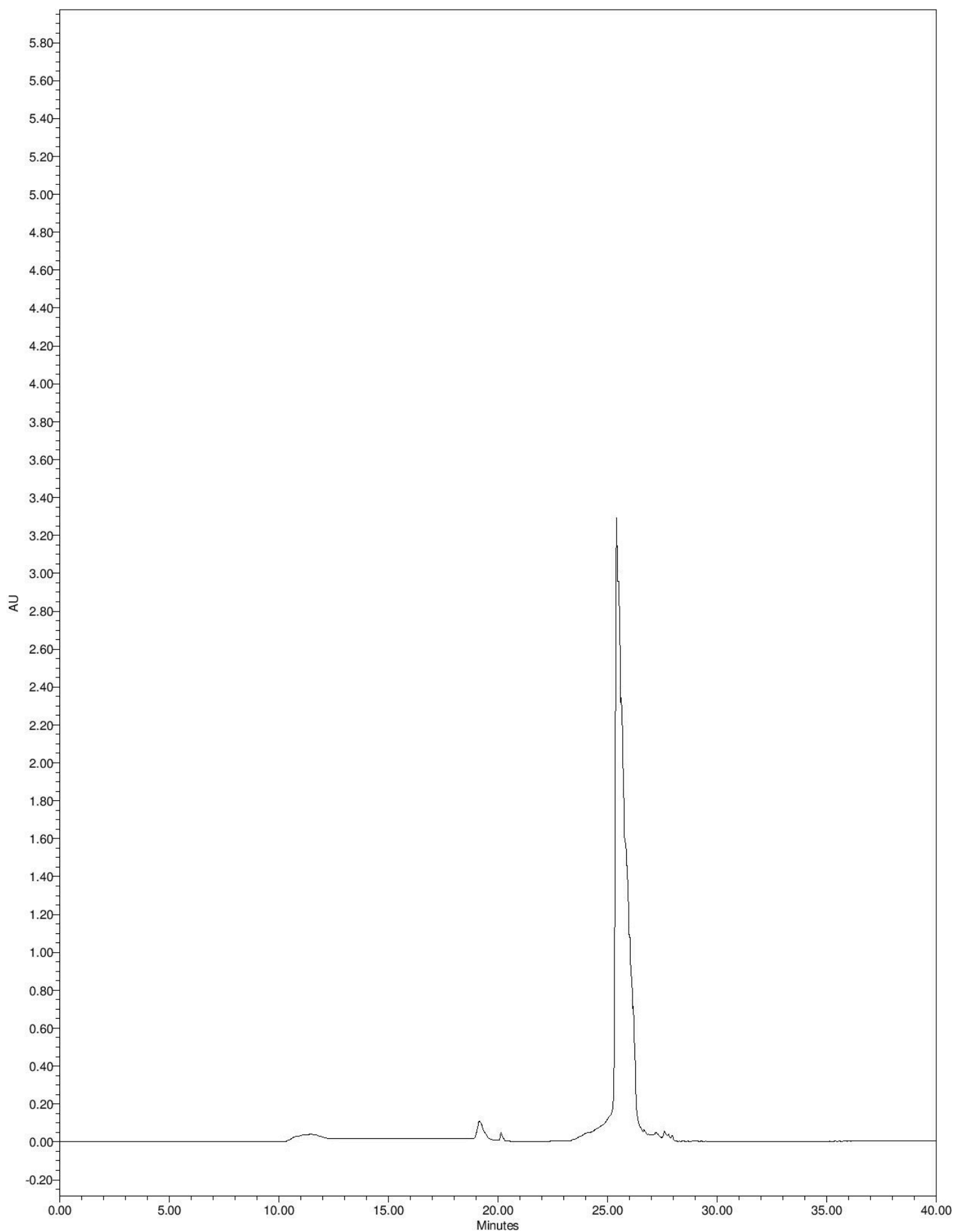


Figure S1: HPLC chromatogram of the target compound 1

Condition: HPLC on a Waters Nova-Pak C18 column (3.9×300 mm; $4 \mu\text{m}$ particle size) with a flow rate of 1 mL/min and using a gradient of CH₃CN in water (Conditions: 0 to 10% A in B, A = CH₃CN, B = water, over 40 min.)

Display Report

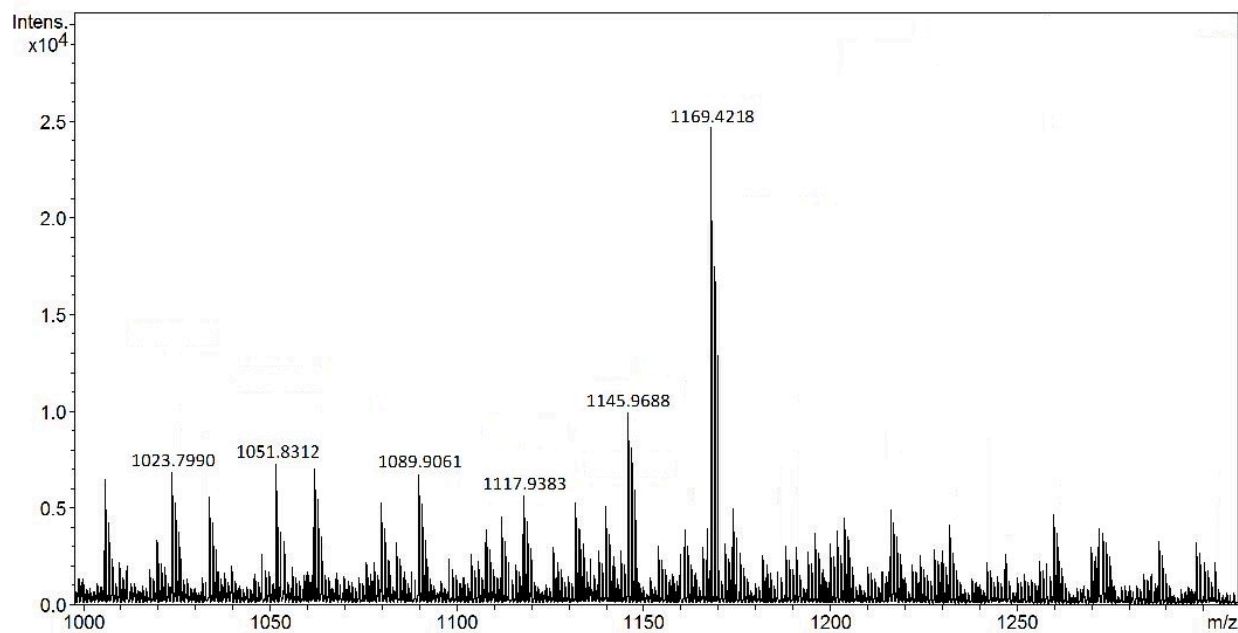
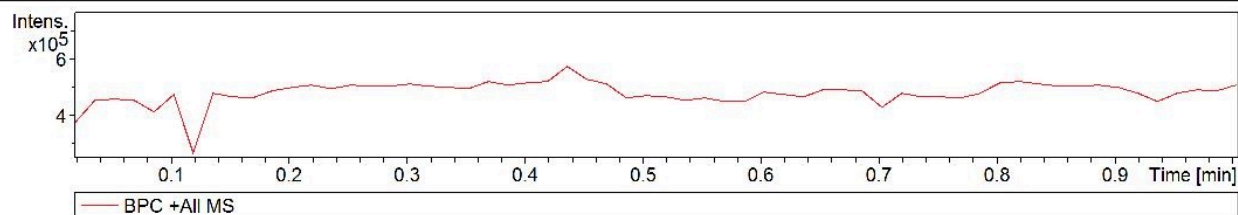
Analysis Info

Analysis Name D:\Data\User data\2016\AUGUST\BM_AM_SAI10.d
Method Tune_pos_Standard.m
Sample Name BM_AM_SAI10
Comment

Acquisition Date 8/26/2016 4:54:27 PM
Operator RAJESH VASHISTH
Instrument maXis impact 8282001.00127

Acquisition Parameter

Source Type	ESI	Ion Polarity	Positive	Set Nebulizer	0.3 Bar
Focus	Active	Set Capillary	4000 V	Set Dry Heater	200 °C
Scan Begin	50 m/z	Set End Plate Offset	-500 V	Set Dry Gas	4.0 l/min
Scan End	1600 m/z	Set Charging Voltage	2000 V	Set Divert Valve	Source
		Set Corona	0 nA	Set APCI Heater	0 °C



BM_AM_SAI10.d

RAJESH

Figure S2: ESI-MS of the target compound 1 (data collected on BRUKER Maxis Impact mass spectrometer, ESI (+)ve mode)