

Supplementary Figures

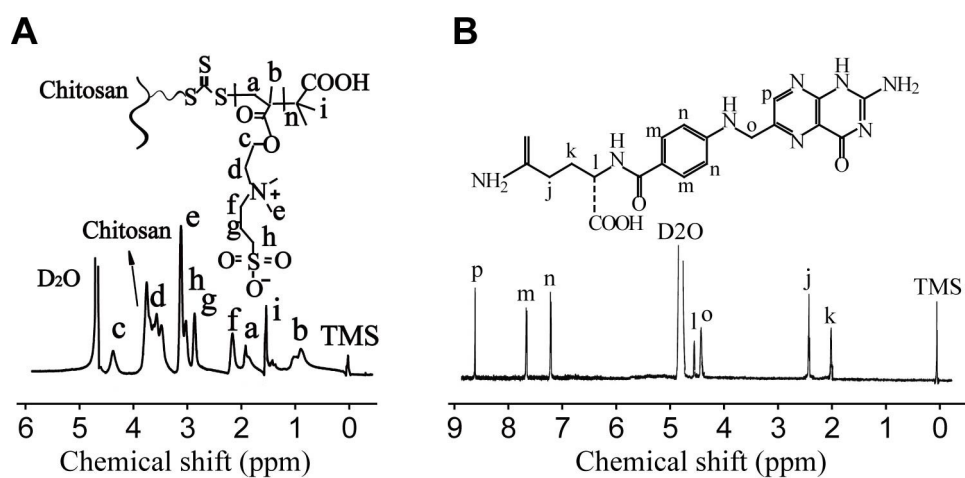


Fig. S1 ¹H NMR spectrum (400 M, CF₃COOD/D₂O (v/v = 1/9)) of CS-g-PSBMA and FA.

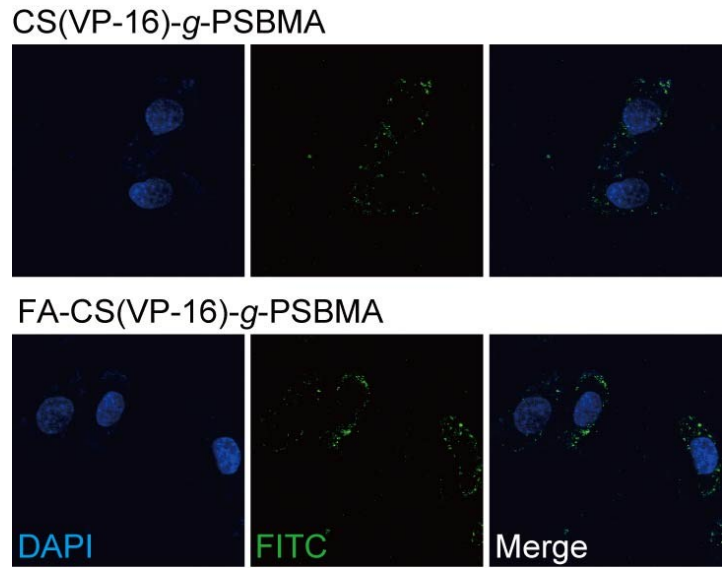


Fig. S2 Cellular uptake of FITC-labelled CS(VP-16)-*g*-PSBMA and FA-CS(VP-16)-*g*-PSBMA nanoparticles in FR-negative L929 cells. L929 cells were incubated with nanoparticles for 8 h. After stained with DAPI for 5 min, cell images were obtained by confocal laser scanning microscope.