

## Supplementary Information

# Exploring the Anti-Breast Cancer Potential of Flavonoid Analogs

Vanrajsinh Thakor<sup>a</sup>, Mayur Poddar<sup>a</sup>, Sumit Dey<sup>b</sup>, S. N. Manjula<sup>b</sup>, SubbaRao V. Madhunapantula<sup>c</sup>,  
Rahul Pawara<sup>d</sup>, Harun M. Patel<sup>d\*</sup>, Malleshappa N. Noolvi<sup>a\*\*</sup>

<sup>a</sup> Department of Pharmaceutical Chemistry, Shree Dhanvantary Pharmacy College, Kim (Surat)-394110, Gujarat, India

<sup>b</sup> Department of Pharmacology, JSS College of Pharmacy, Mysore-570015, Karnataka, India

<sup>c</sup> Department of Biochemistry, JSS Medical College, Mysore-570015, Karnataka, India

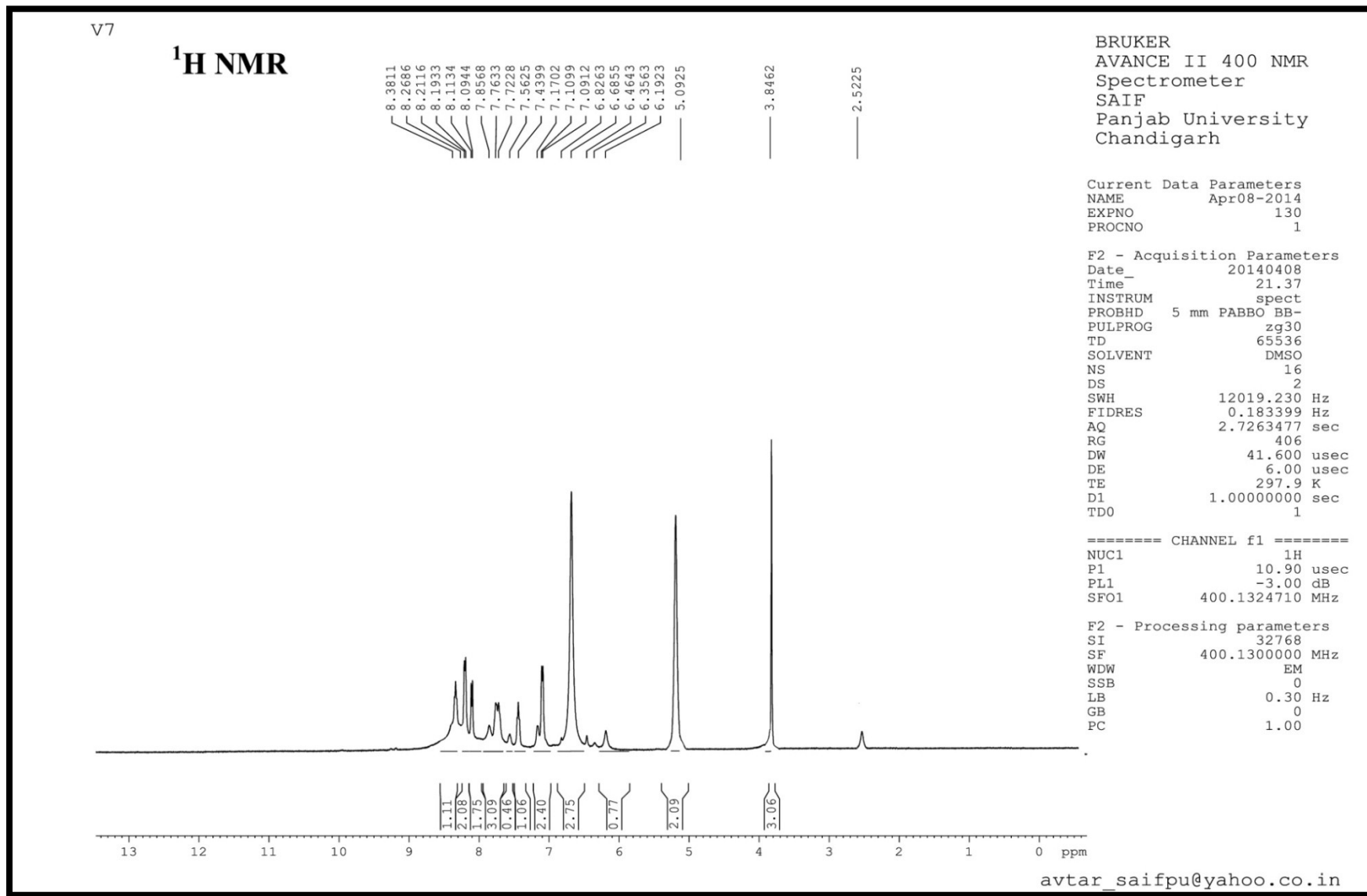
<sup>d</sup> Department of Pharmaceutical Chemistry, R. C. Patel Institute of Pharmaceutical Education and Research, Shirpur, District  
Dhule-425 405, Maharashtra, India

### Corresponding Author\*

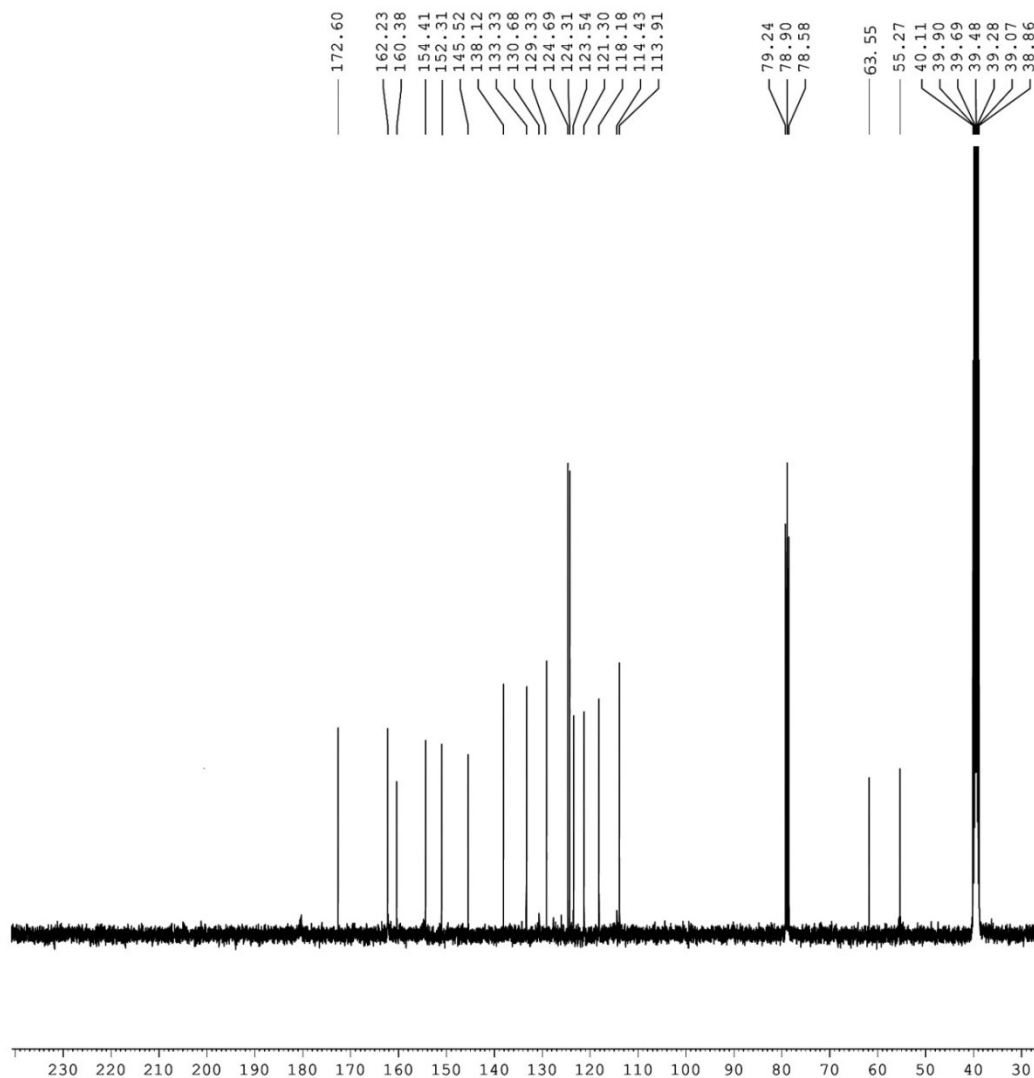
Tel: +91-9904104830; Fax: + 91-(02621) 231077;

Email: [mnoolvi@yahoo.co.uk](mailto:mnoolvi@yahoo.co.uk)

# Compound 8J



**<sup>13</sup>C NMR**  
V7



BRUKER  
AVANCE II 400 NMR  
Spectrometer  
SAIF  
Panjab University  
Chandigarh

Current Data Parameters  
NAME Apr08-2014  
EXPNO 131  
PROCNO 1

F2 - Acquisition Parameters  
Date\_ 20140408  
Time\_ 22.34  
INSTRUM spect  
PROBHD 5 mm PABBO BB-  
PULPROG zgpg30  
TD 65536  
SOLVENT DMSO  
NS 1024  
DS 4  
SWH 29761.904 Hz  
FIDRES 0.454131 Hz  
AQ 1.1010548 sec  
RG 36  
DW 16.800 usec  
DE 6.00 usec  
TE 298.7 K  
D1 2.00000000 sec  
d11 0.03000000 sec  
DELTA 1.89999998 sec  
TD0 1

===== CHANNEL f1 =====  
NUC1 13C  
P1 9.60 usec  
PL1 -2.00 dB  
SFO1 100.6228298 MHz

===== CHANNEL f2 =====  
CPDPRG2 waltz16  
NUC2 1H  
PCPD2 80.00 usec  
PL2 -3.00 dB  
PL12 14.31 dB  
PL13 18.00 dB  
SFO2 400.1316005 MHz

F2 - Processing parameters  
SI 32768  
SF 100.6128193 MHz  
WDW EM  
SSB 0  
LB 1.00 Hz  
GB 0  
PC 1.40

avtar\_saifpu@yahoo.co.in

# MASS

Intensity  
Spectrum RT 1.08 - 1.47 (12 scans) - Background Subtracted 0.02 - 1.08  
V7 2014.04.10 12:06:12;  
ESI +

