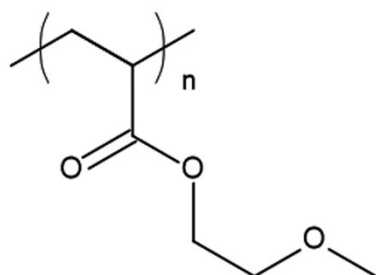
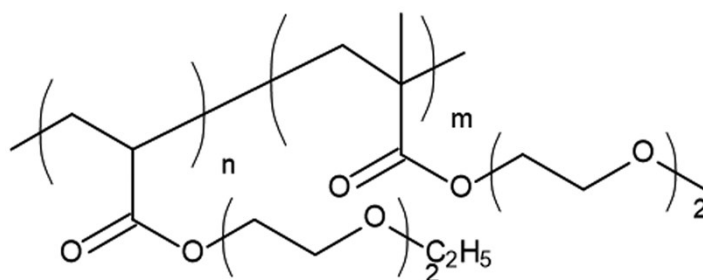


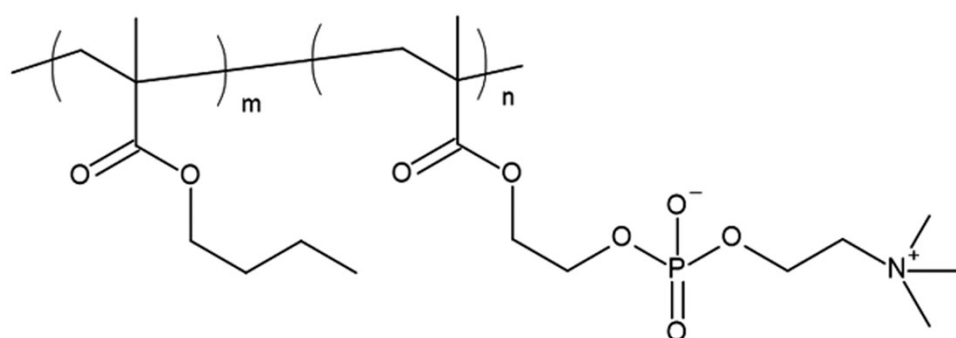
(A) PMEA



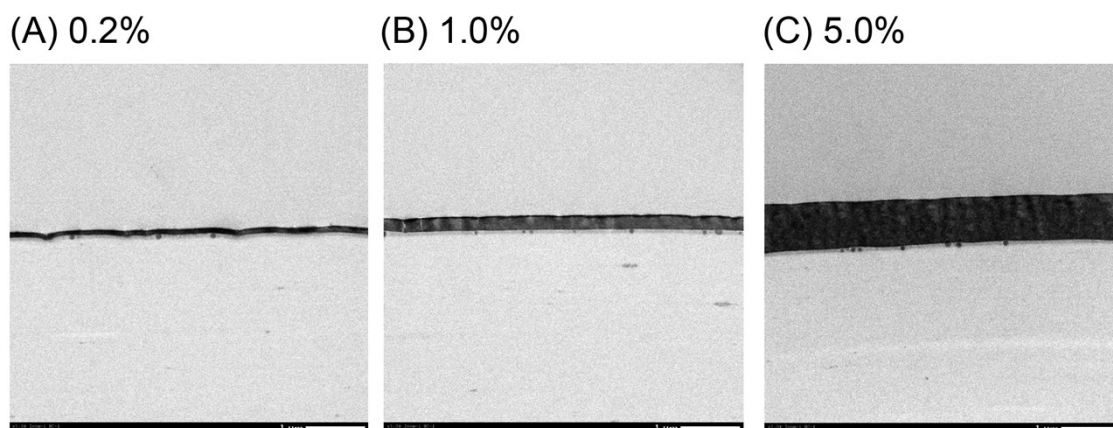
(B) P(Et2A-Me2MA)



(C) PMPC



Supplemental Figure S1. Chemical structures of PMEA, P(Et2A-Me2MA), and PMPC.



Supplemental Figure S2. Sectional transmission electron microscope (TEM) images of the substrates coated with P(Et2A-Me2MA) at different concentrations. TEM observation was outsourced and the images were obtained by Nitto Analytical Techno-center (Osaka, Japan).

**Supplemental Table S1. Detachment ratio of HT-1080 cells from PEt2A**

Polymer	Detachment ratio (%)
PET	26.5±7.0
PMEA	25.0±8.0
PEt2A	13.8±23.0

PMEA and PEt2A were coated at a concentration of 1.0 wt%. The cells were incubated at 10°C for 90 min.