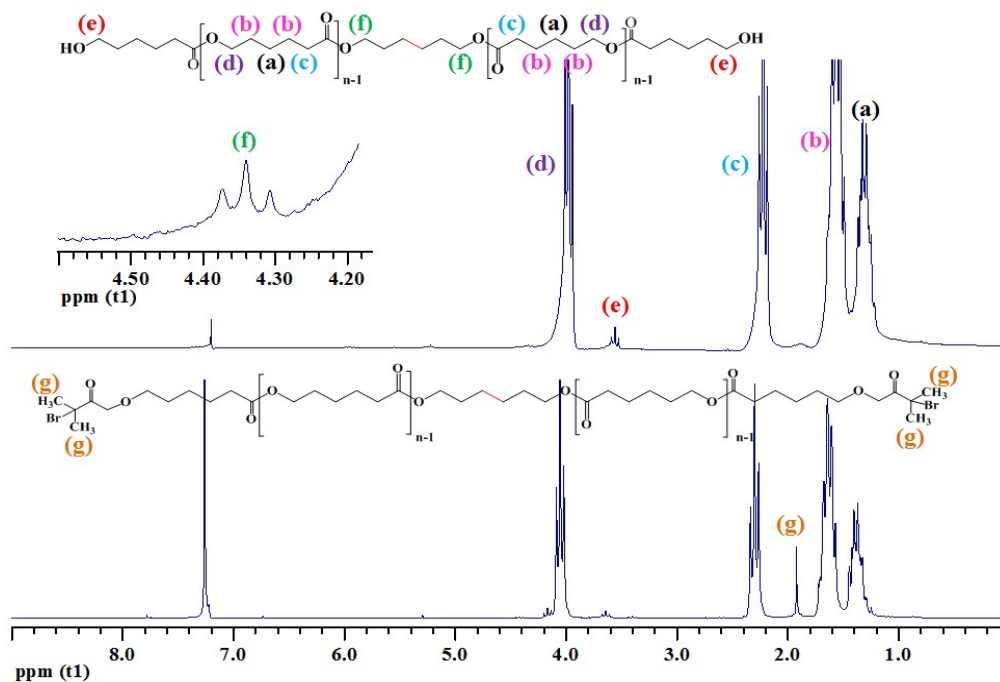


(a)



(b)

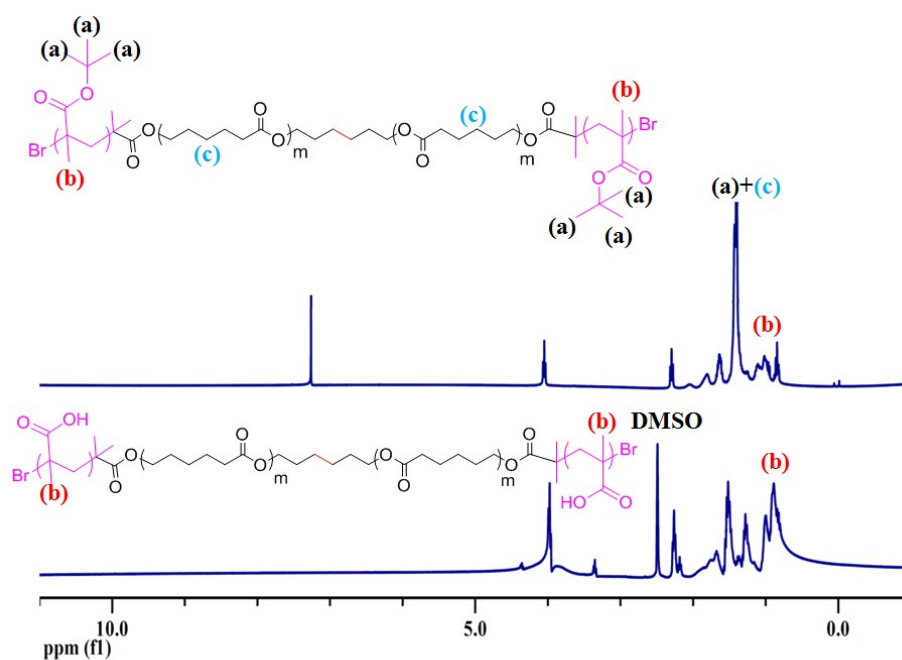


Fig. S1. The NMR spectra of (a) PCL-CC-PCL (top) and Br-PCL-CC-PCL-Br (bottom), (b) PtBMA-PCL-CC-PCL-PtBMA with a high length of *t*BMA (top), and PMAA-PCL-CC-PCL-PMAA (bottom).

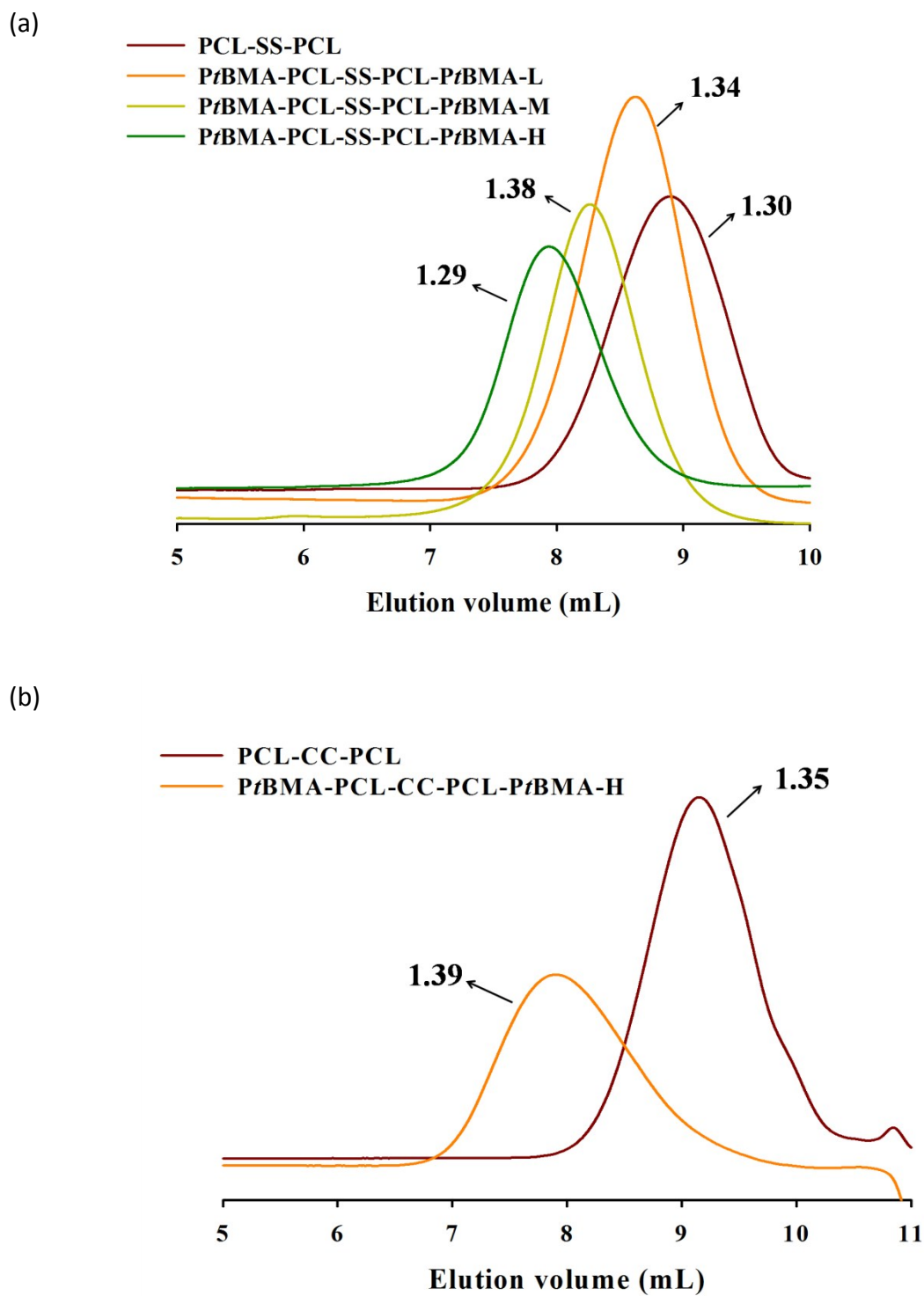


Fig. S2. GPC profiles of (a) PCL-SS-PCL and PtBMA-PCL-SS-PCL-PtBMA with low (L), middle (M) and high (H) lengths of *t*BMA; (b) PCL-CC-PCL and PtBMA-PCL-CC-PCL-PtBMA.

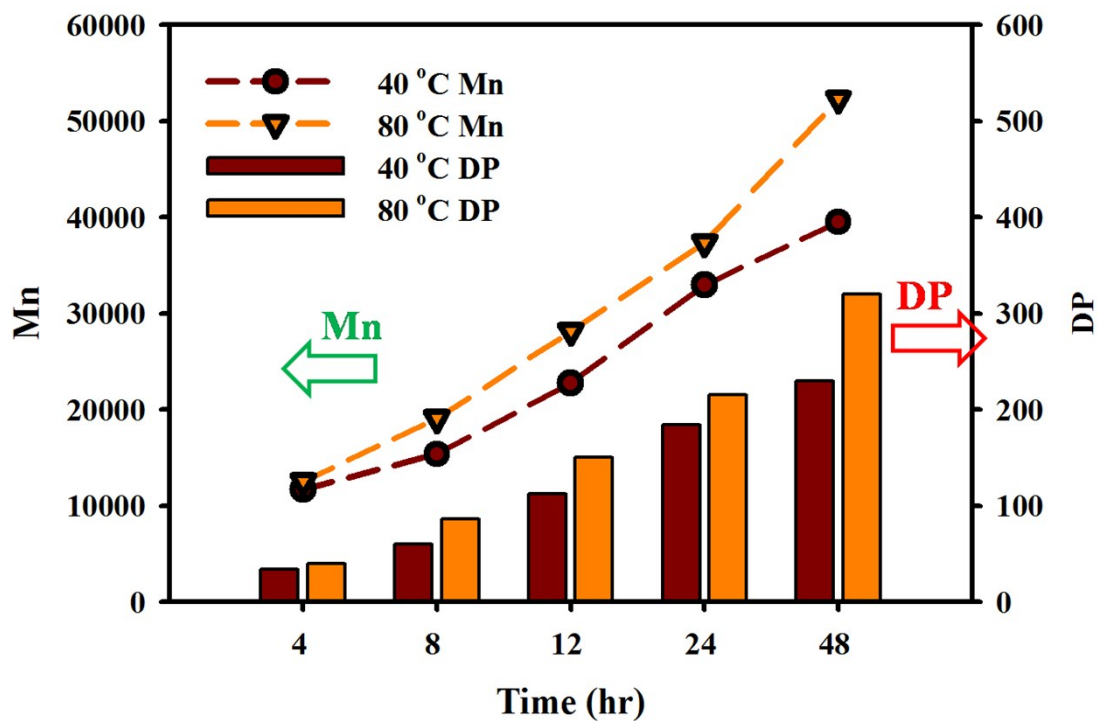


Fig. S3. The number average molecular weight of *Pt*BMA-PCL-SS-PCL-*Pt*BMA and the degree of polymerization (DP) of *t*BMA with reaction time at 40 or 80°C.

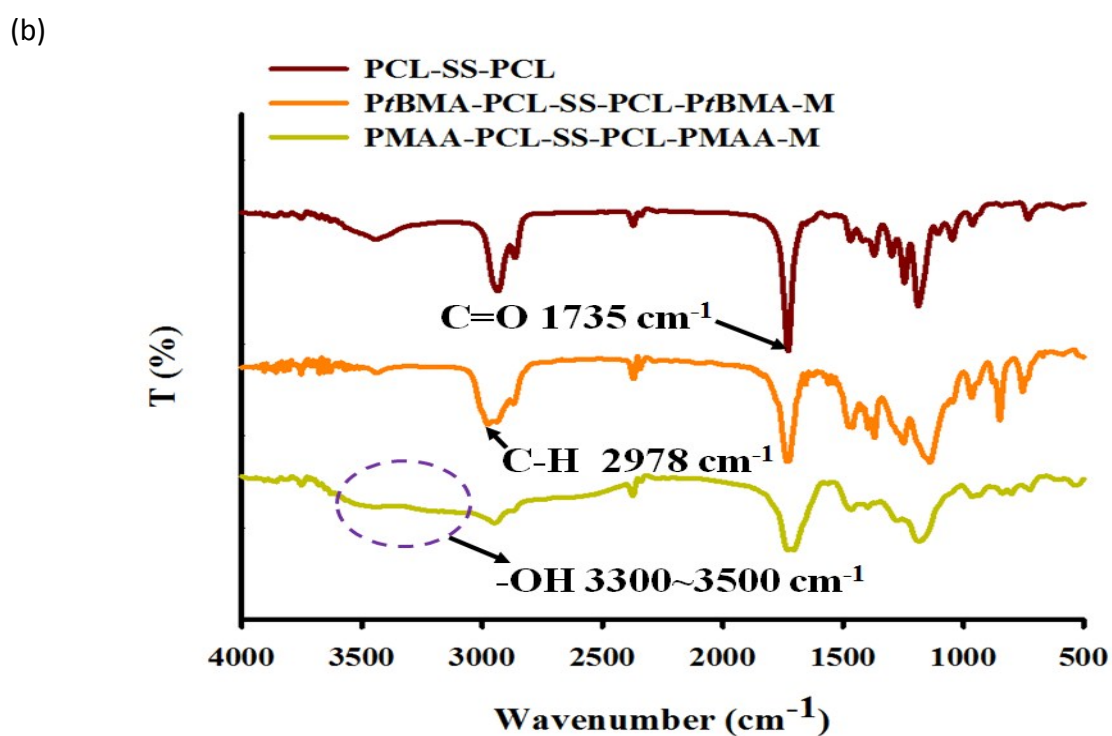
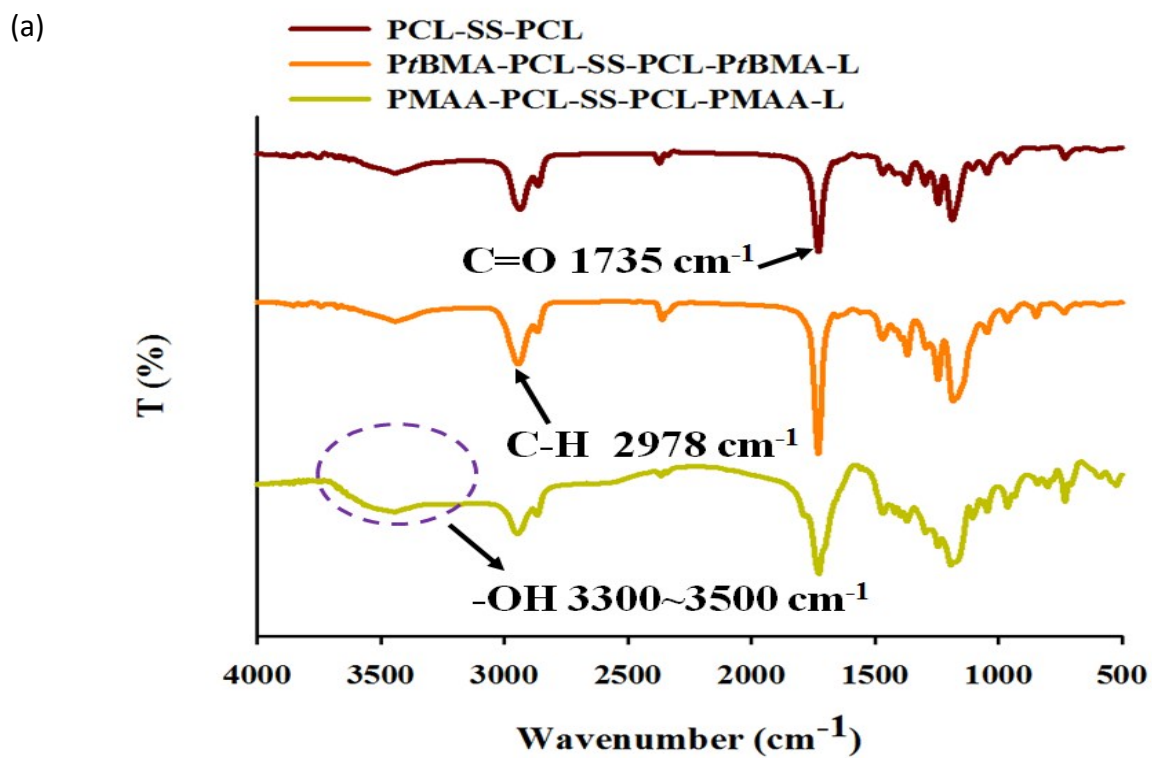


Fig. S4. FTIR spectra of PCL-SS-PCL, PtBMA-PCL-SS-PCL-PtBMA with (a) low (L) and (b) middle (M) lengths of *t*BMA, and their corresponding PMAA-PCL-SS-PCL-PMAA.