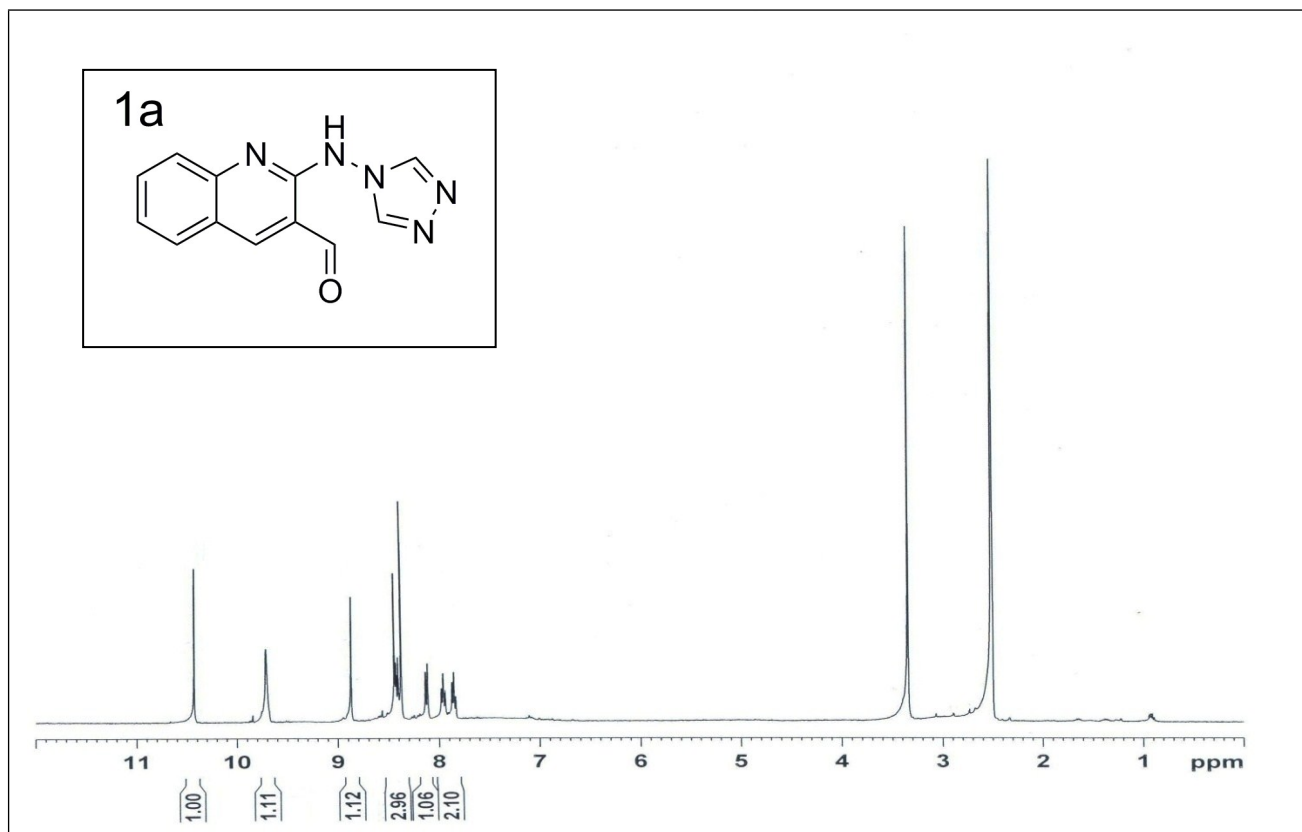


Supplementary Material

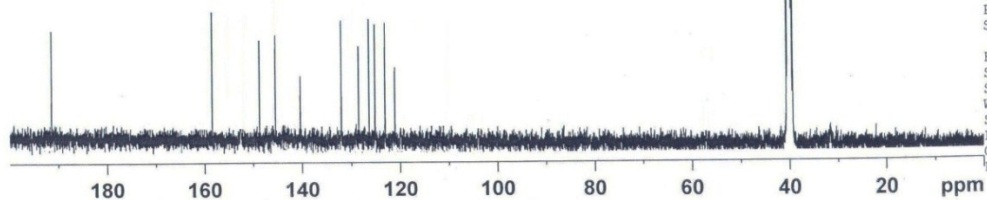
Synthesis and evaluation of new chromene based [1,8]naphthyridines derivatives as potential antimicrobial agents

Jayvirsinh D. Gohil, Haresh B. Patel, Manish P. Patel*

Department of Chemistry, Sardar Patel University, Vallabh Vidyanagar, Gujarat, India



1a



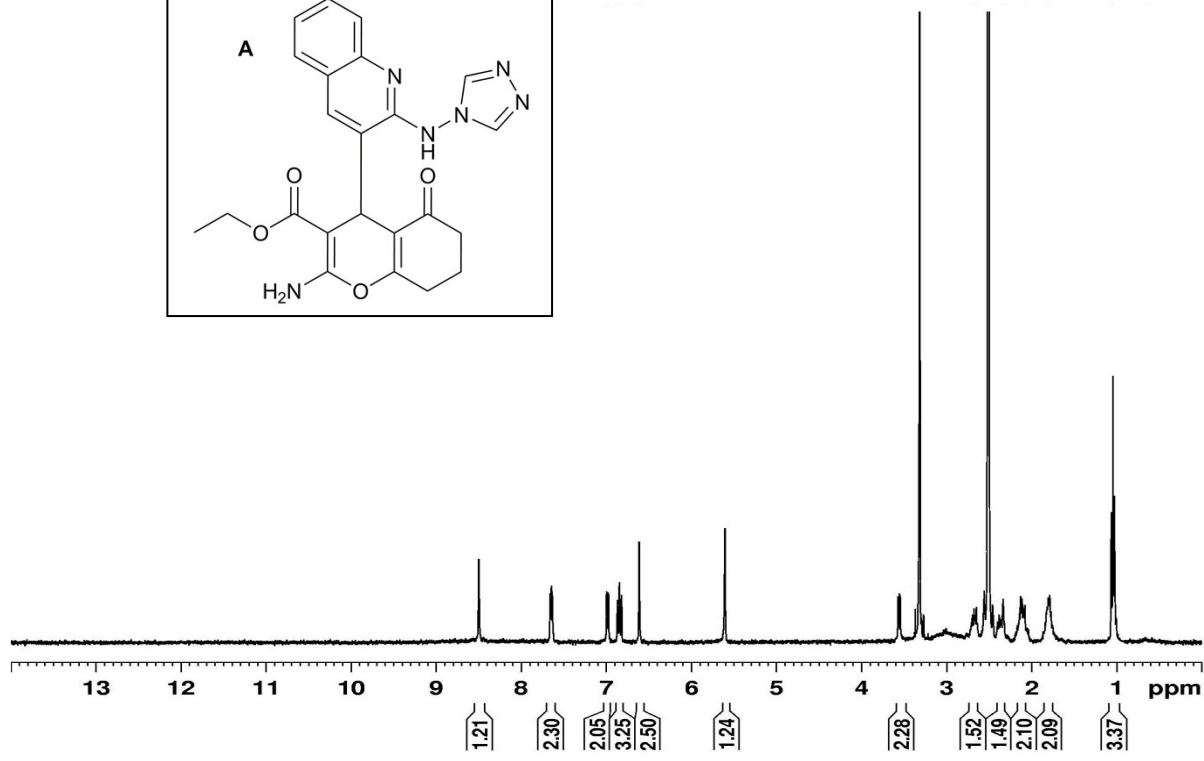
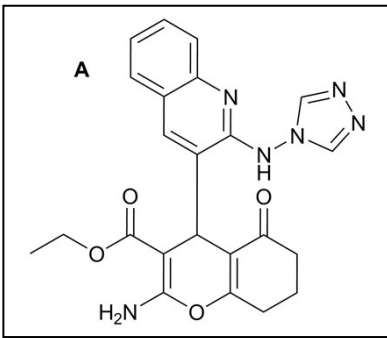
```
Current Data Parameters
NAME      MPP
EXPNO    120
PROCNO   1

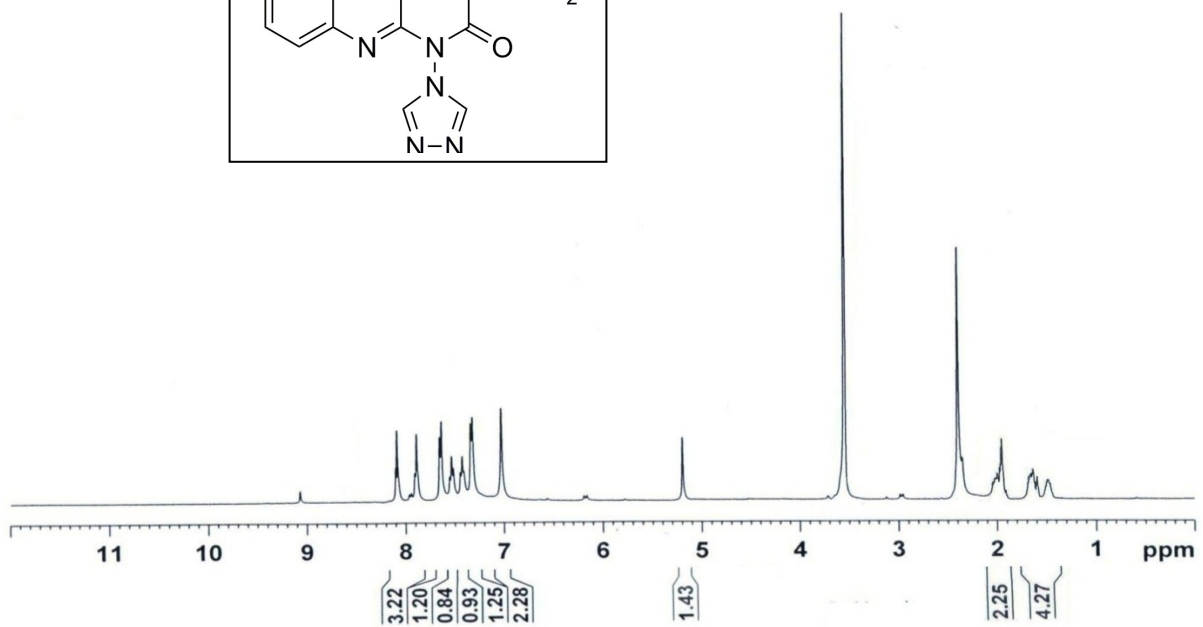
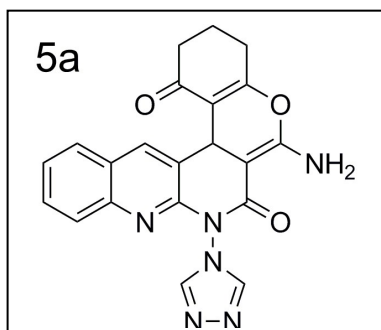
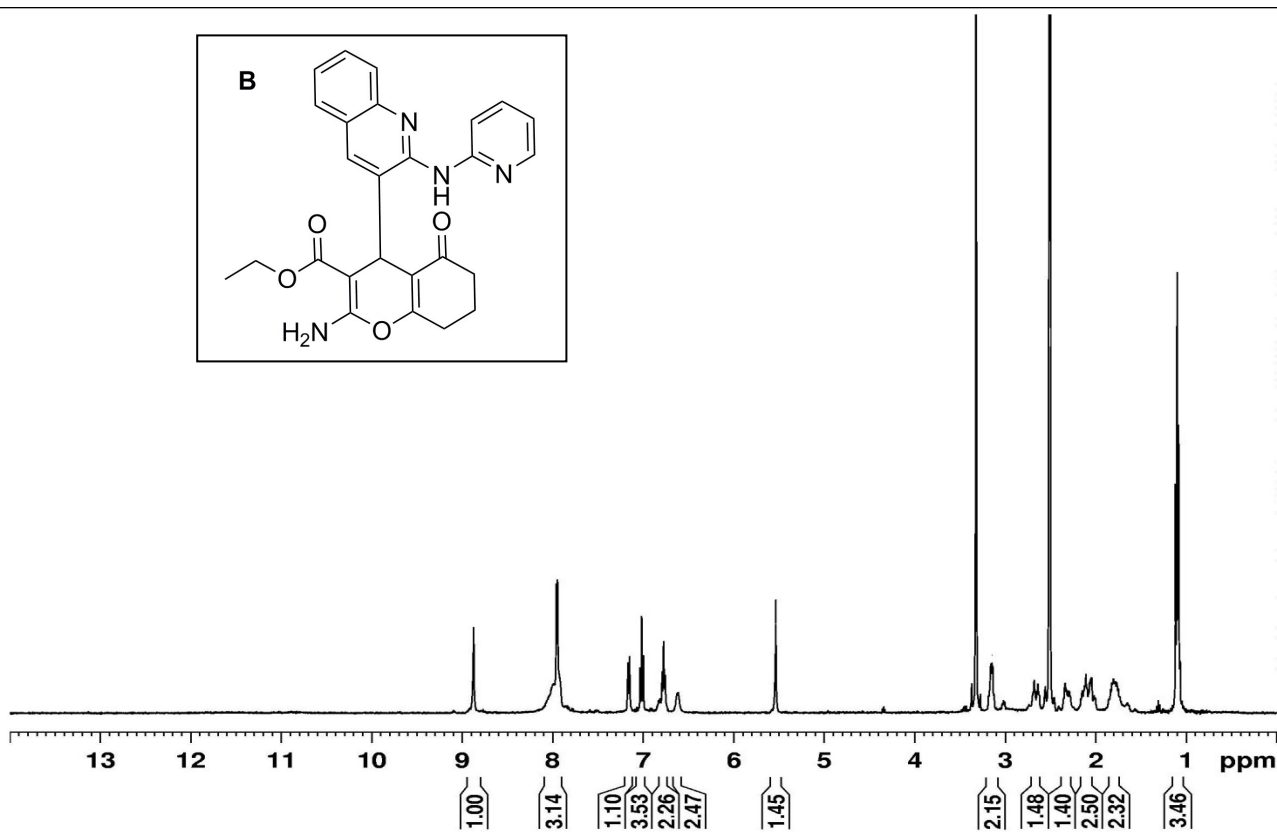
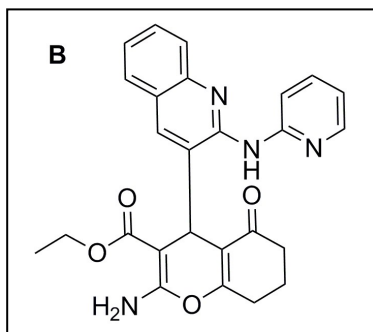
F2 - Acquisition Parameters
Date_    20140427
Time_    12.19
INSTRUM  spect
PROBHD   5 mm BBO BB-1H
PULPROG  zgpg30
TD       65536
SOLVENT  DMSO
NS       1024
DS       4
SWH      23980.814 Hz
FIDRES   0.365918 Hz
AQ       1.3664756 sec
RG       8192
DW       20.850 usec
DE       6.00 usec
TE       298.6 K
D1       2.00000000 sec
d11      0.03000000 sec
DELTA    1.89999998 sec
TD0      1

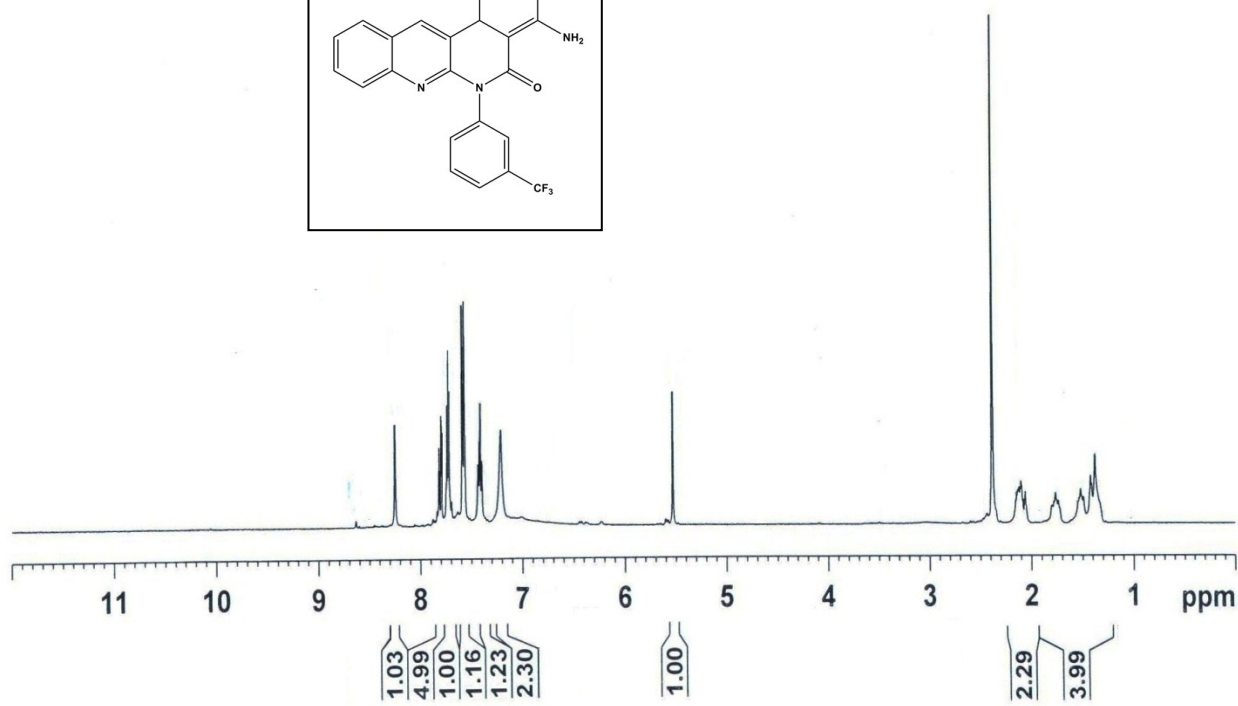
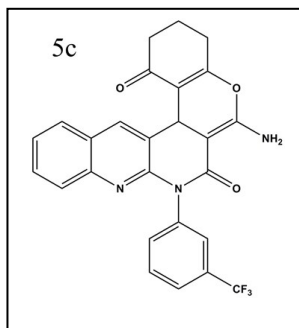
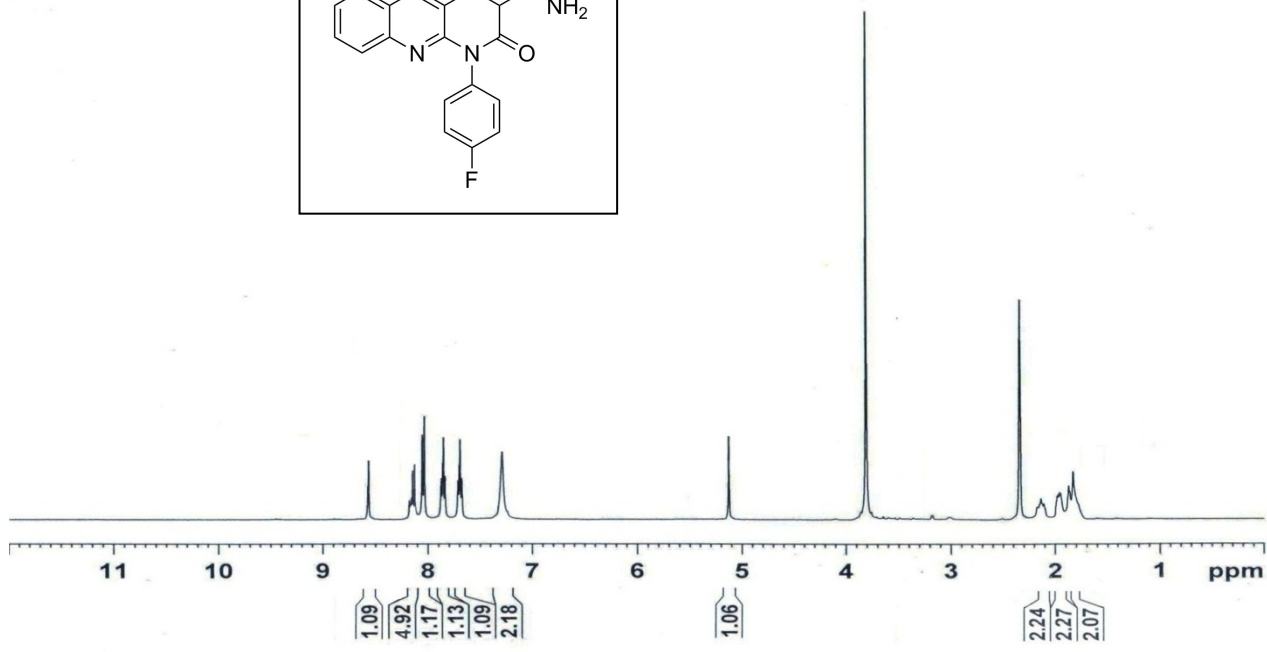
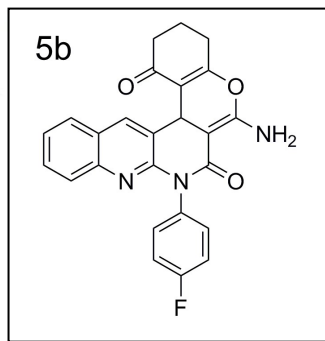
===== CHANNEL f1 =====
NUC1     13C
P1       14.00 usec
PL1      -4.00 dB
SFO1     100.6228298 MHz

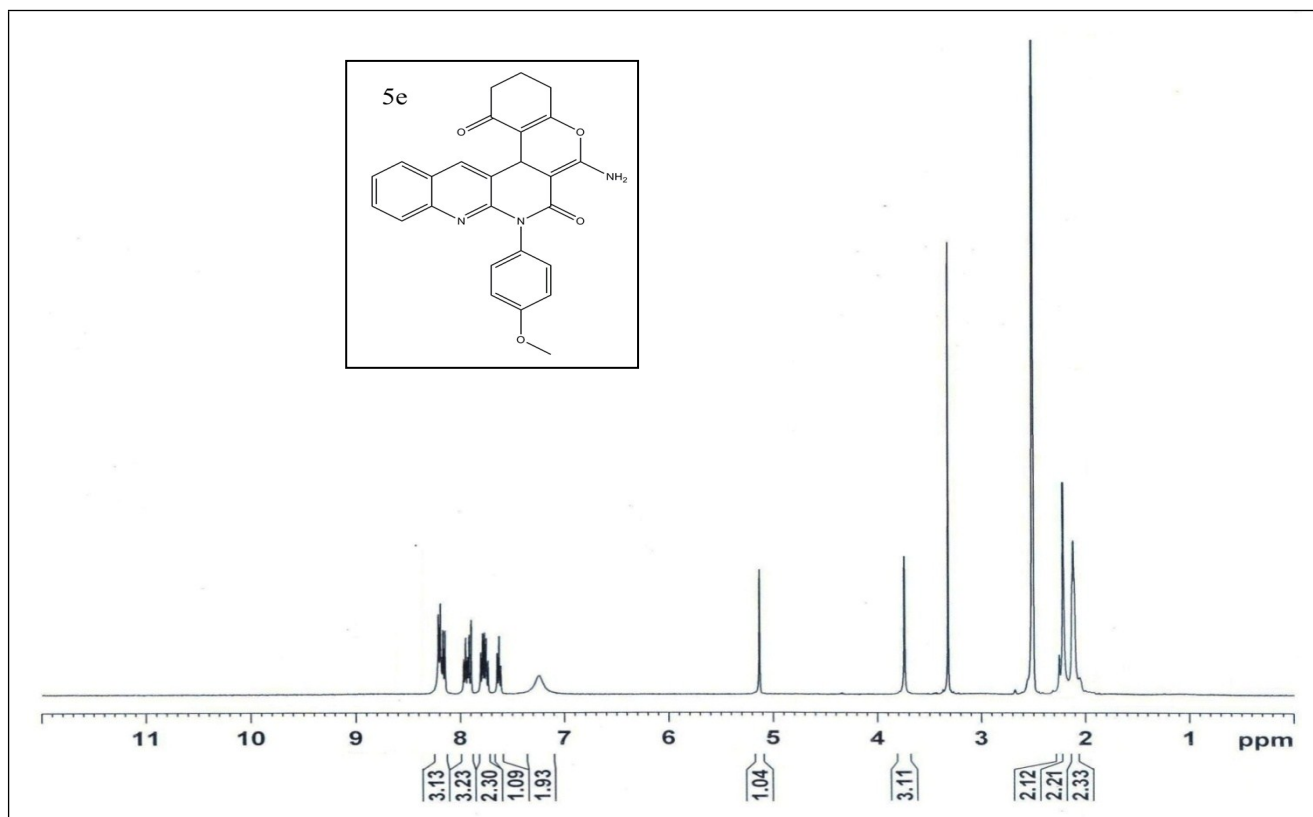
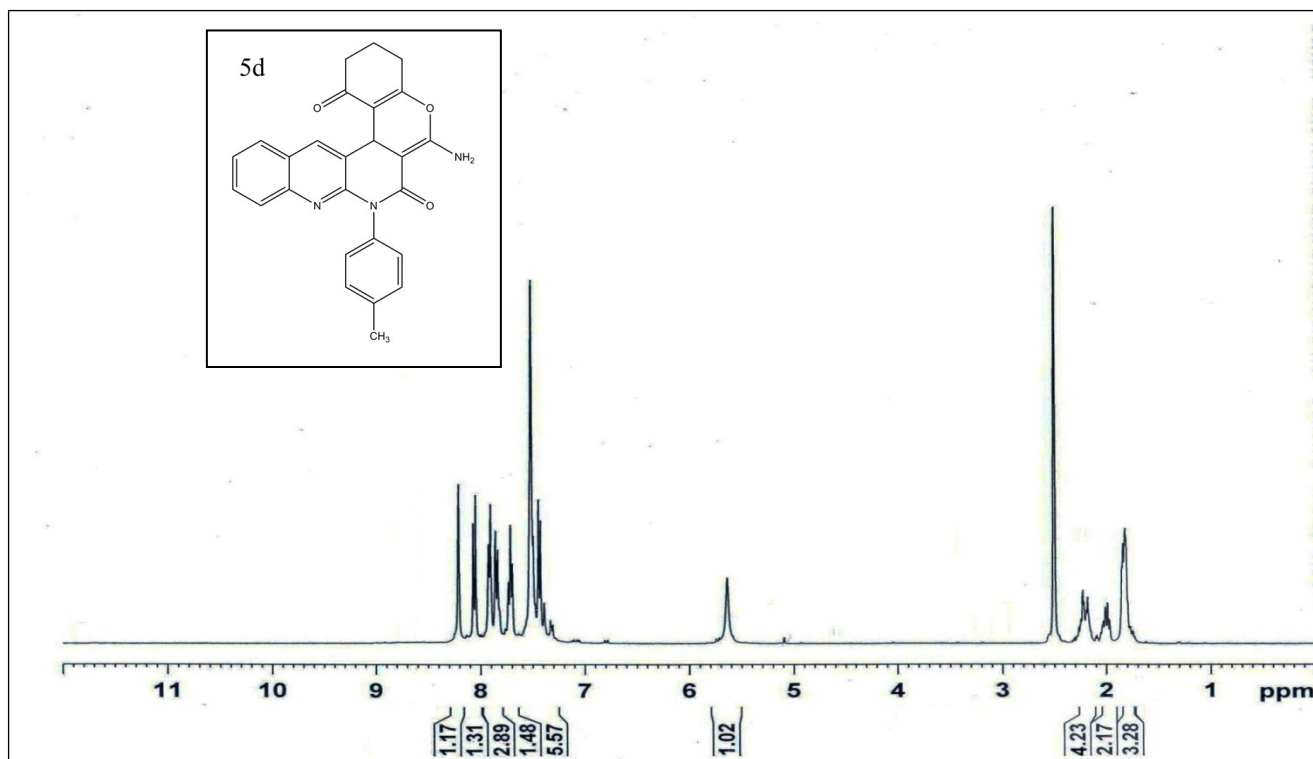
===== CHANNEL f2 =====
CPDPRG2  waltz16
NUC2     1H
PCPD2    80.00 usec
PL2      -1.00 dB
PL12     14.46 dB
PL13     15.00 dB
SFO2     400.1316005 MHz

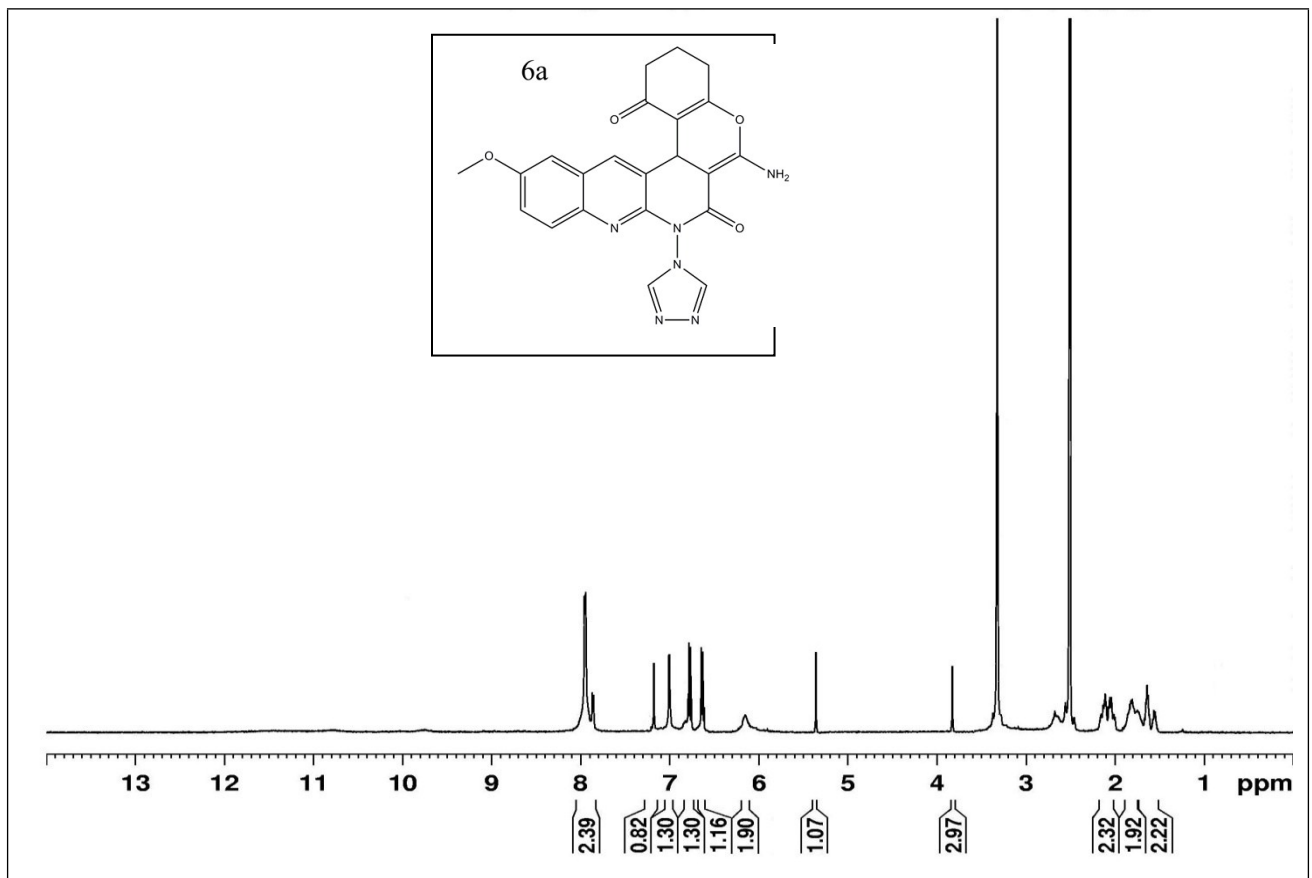
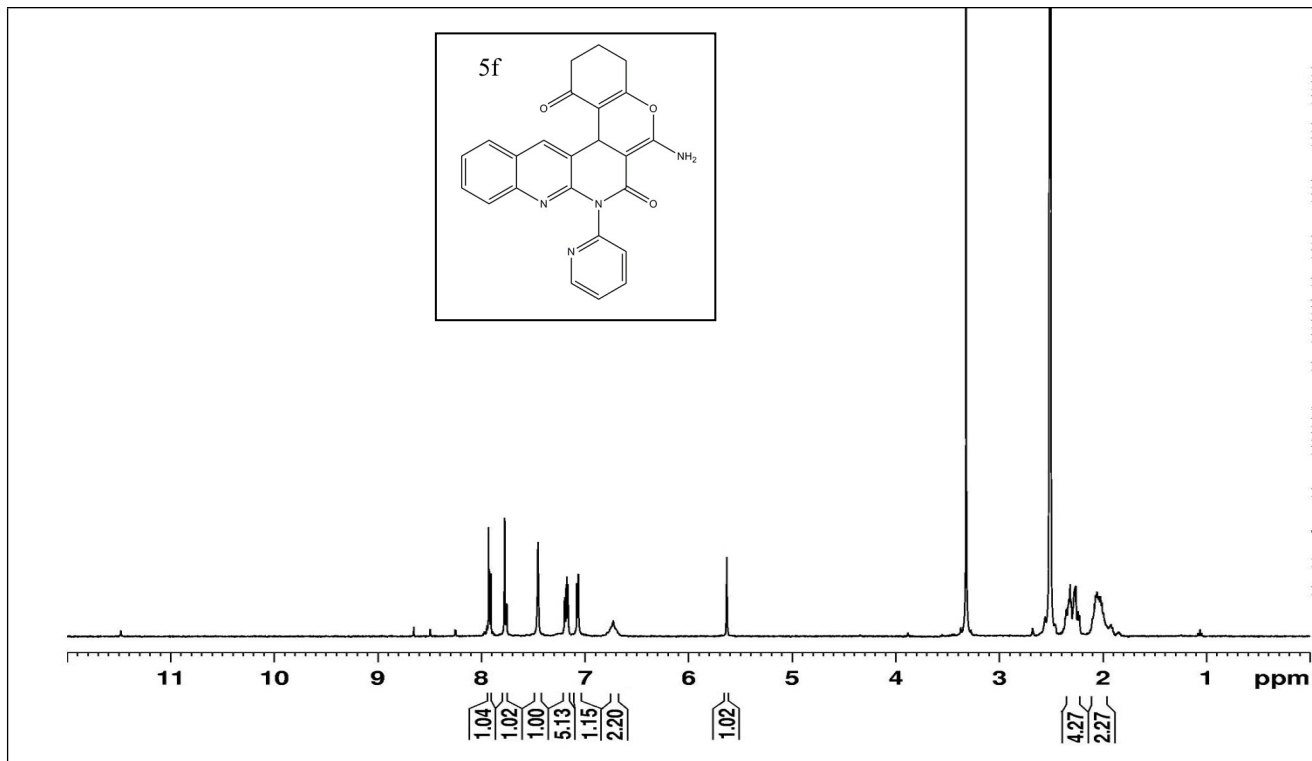
F2 - Processing parameters
SI       32768
SF       100.6127690 MHz
WDW      EM
SSB      0
LB       1.00 Hz
GB       0
PC       1.40
```

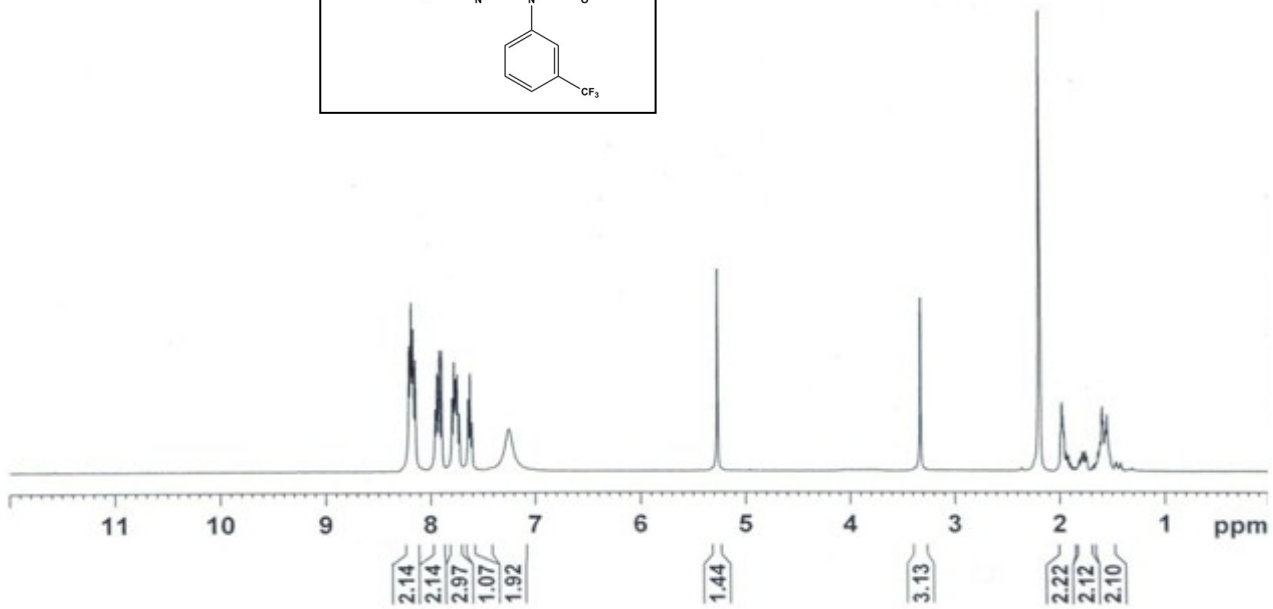
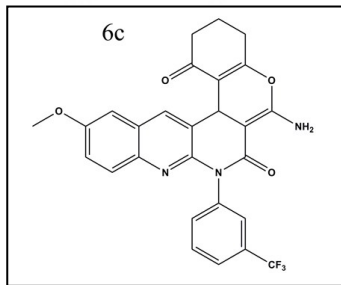
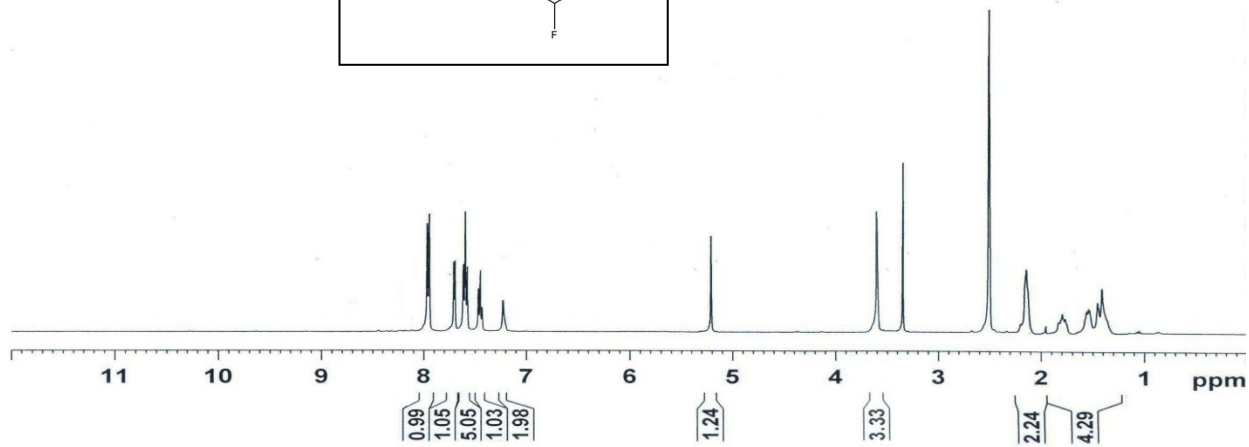
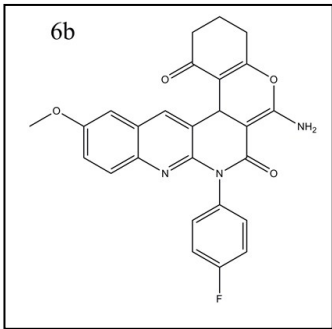


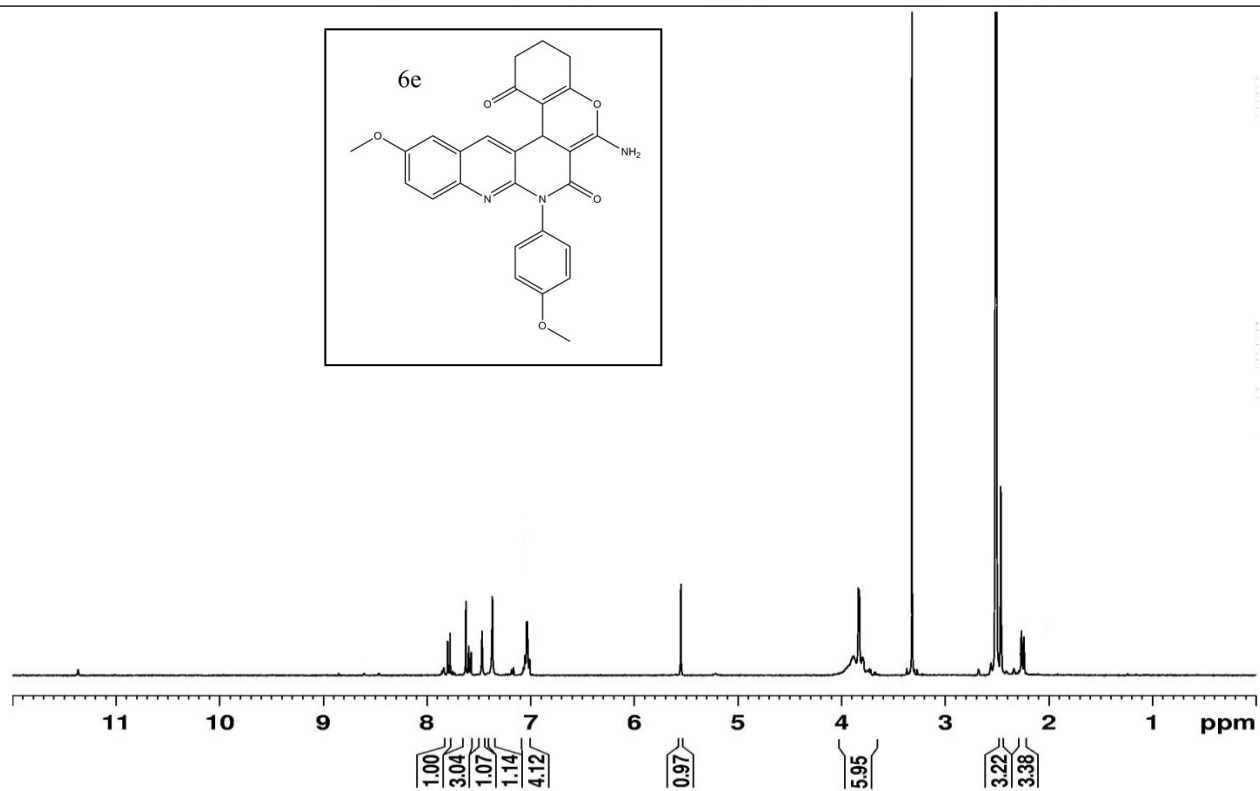
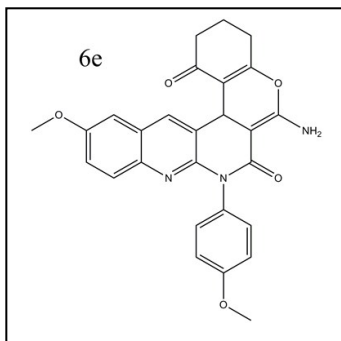
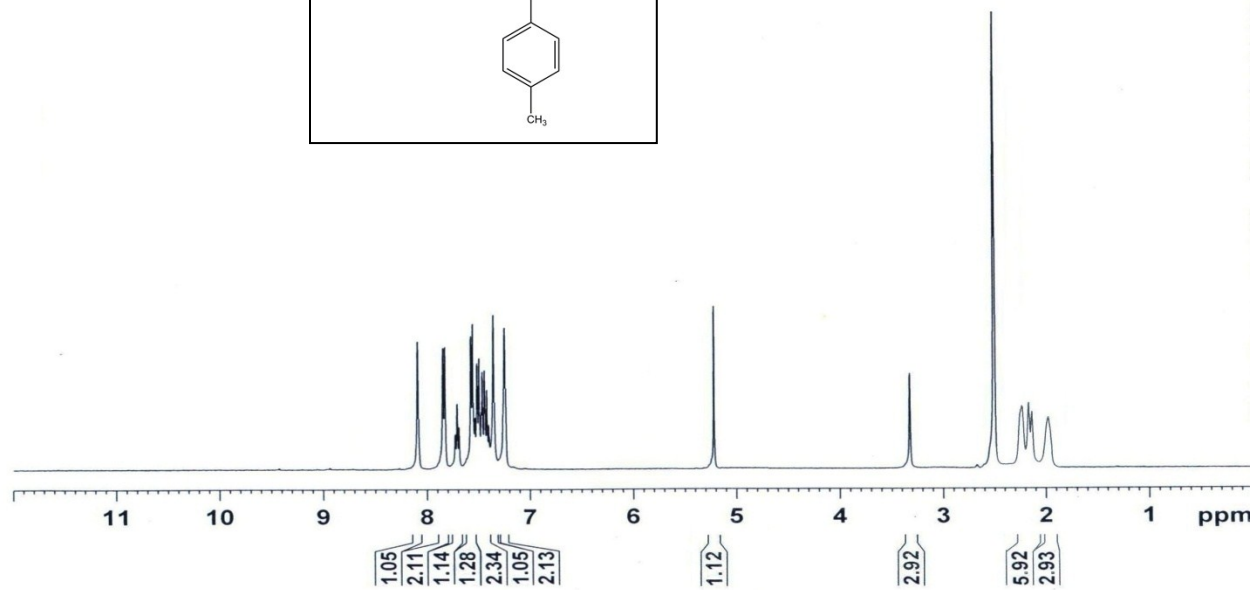
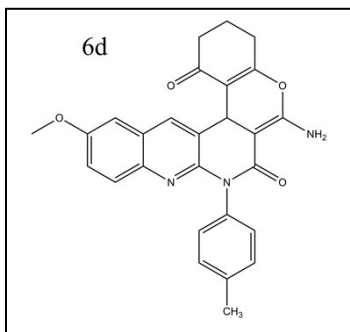


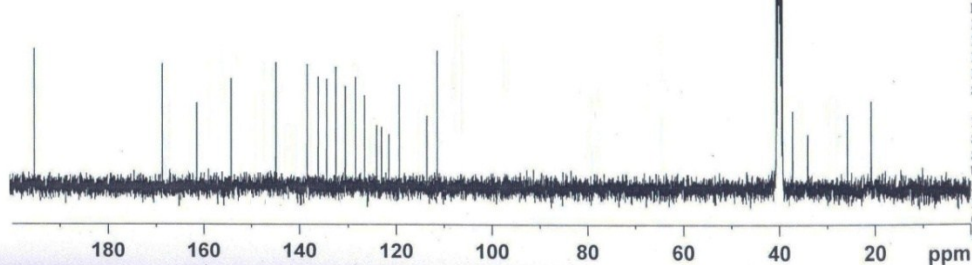
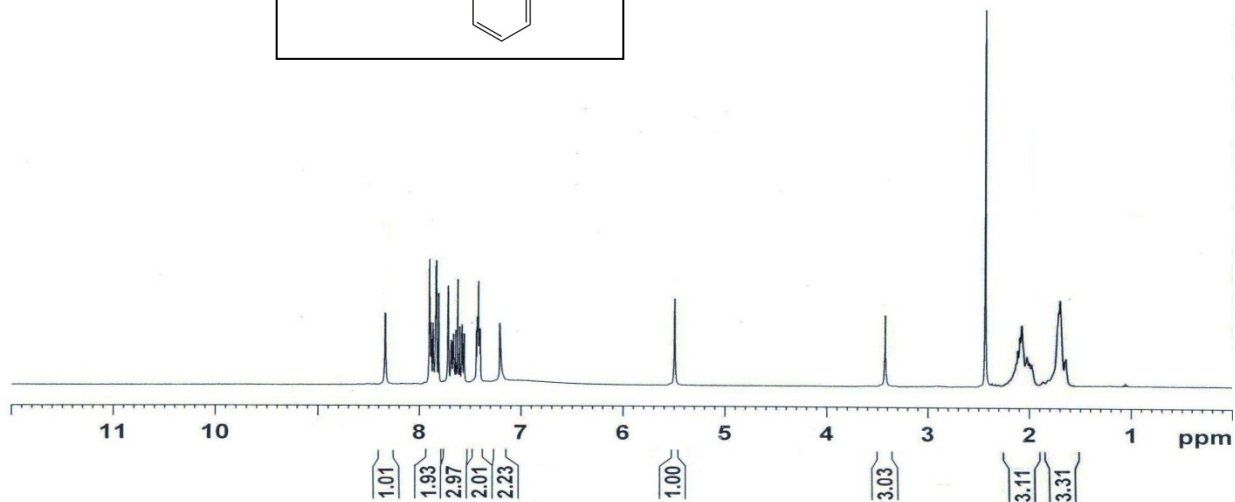
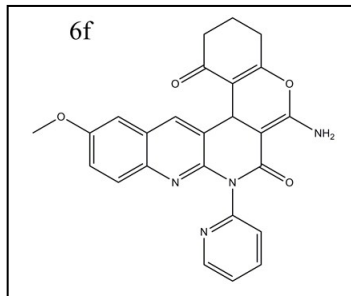












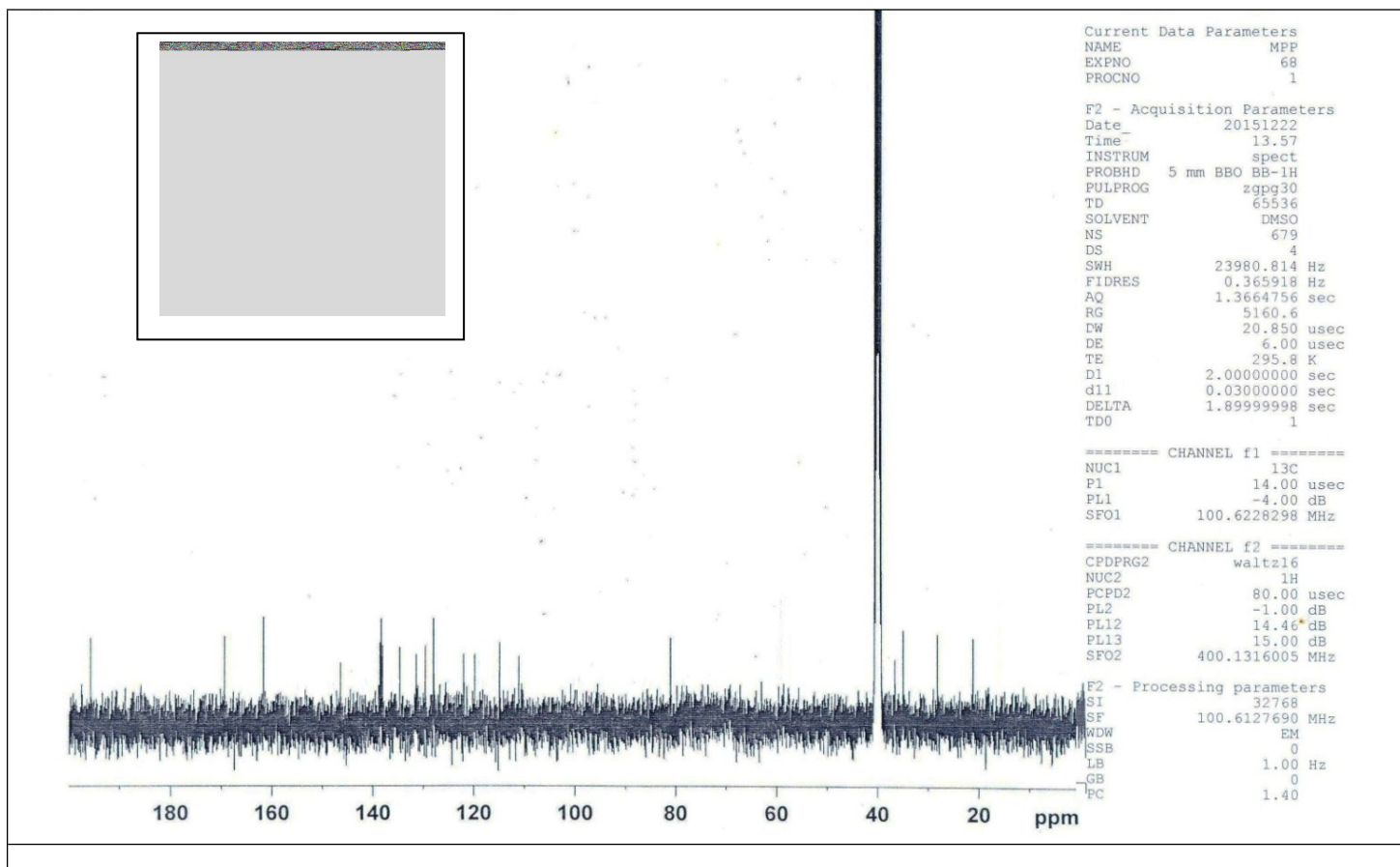
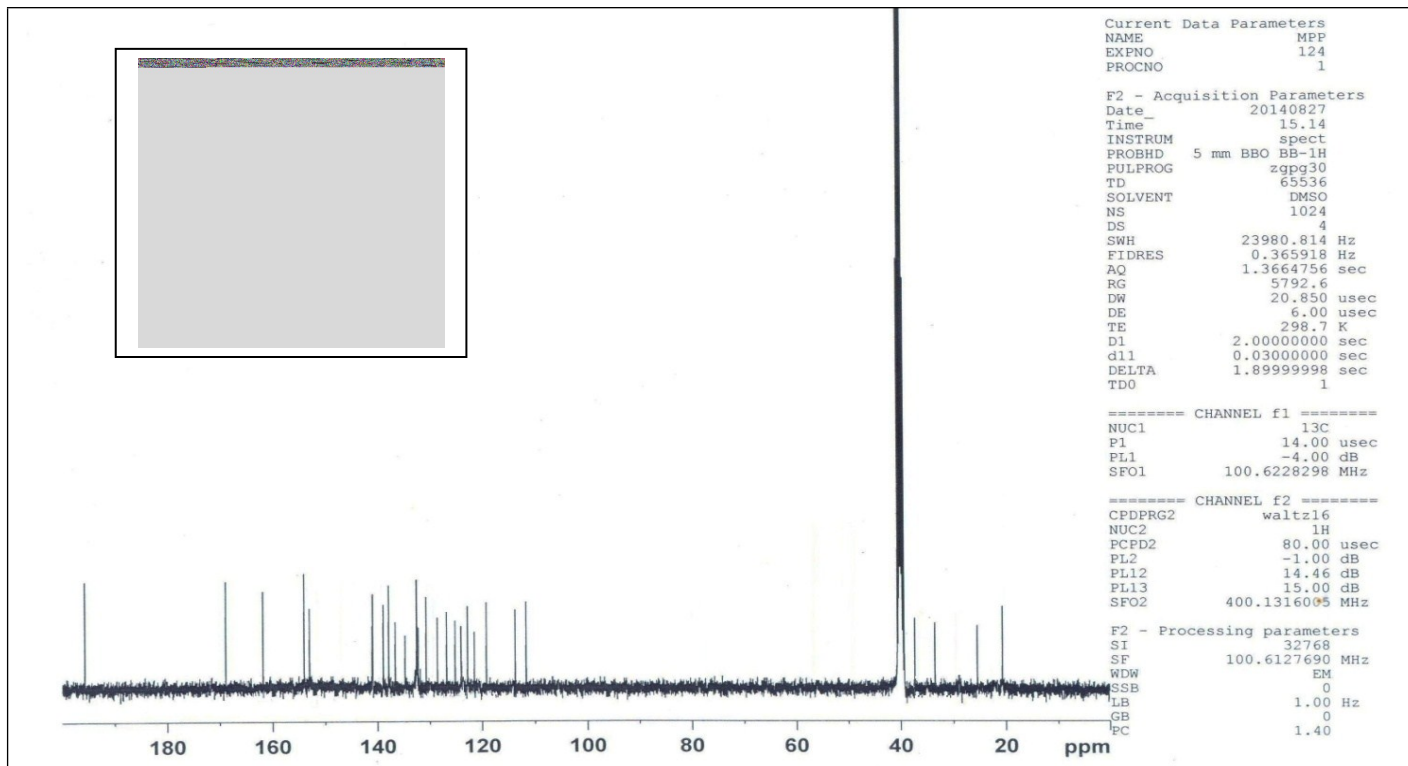
Current Data Parameters
 NAME MPP
 EXPNO 121
 PROCNO 1

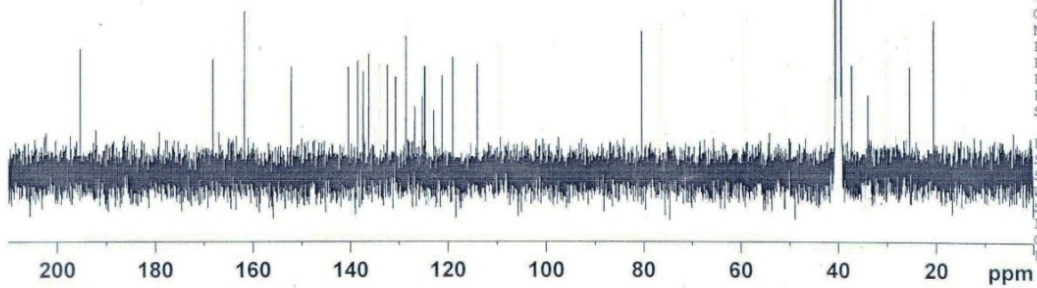
F2 - Acquisition Parameters
 Date 20140827
 Time 13.47
 INSTRUM spect
 PROBHD 5 mm BBO BB-1H
 PULPROG zgpg30
 TD 65536
 SOLVENT DMSO
 NS 1024
 DS 4
 SWH 23980.814 Hz
 FIDRES 0.365918 Hz
 AQ 1.3664756 sec
 RG 8192
 DW 20.850 usec
 DE 6.00 usec
 TE 298.7 K
 D1 2.0000000 sec
 d11 0.0300000 sec
 DELTA 1.89999998 sec
 TD0 1

===== CHANNEL f1 =====
 NUC1 13C
 P1 14.00 usec
 PL1 -4.00 dB
 SFO1 100.6228298 MHz

===== CHANNEL f2 =====
 CPDPRG2 waltz16
 NUC2 1H
 PCPD2 80.00 usec
 PL2 -1.00 dB
 PL12 14.46 dB
 PL13 15.00 dB
 SFO2 400.1316005 MHz

F2 - Processing parameters
 SI 32768
 SF 100.6127690 MHz
 WDW EM
 SSB 0
 LB 1.00 Hz
 GB 0
 PC 1.40





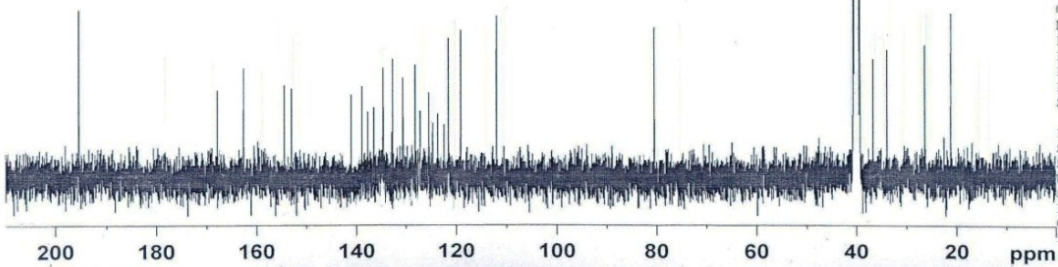
Current Data Parameters
NAME MPP
EXPNO 78
PROCNO 1

F2 - Acquisition Parameters
Date 20151222
Time 13.77
INSTRUM spect
PROBHD 5 mm BBO BB-1H
PULPROG zgpg30
TD 65536
SOLVENT DMSO
NS 679
DS 4
SWH 23980.814 Hz
FIDRES 0.365918 Hz
AQ 1.3664756 sec
RG 5160.6
DW 20.850 usec
DE 6.00 usec
TE 295.8 K
D1 2.00000000 sec
d11 0.03000000 sec
DELTA 1.89999998 sec
TD0 1

===== CHANNEL f1 =====
NUC1 13C
P1 14.00 usec
PL1 -4.00 dB
SFO1 100.6228298 MHz

===== CHANNEL f2 =====
CPDPRG2 waltz16
NUC2 1H
PCPD2 80.00 usec
PL2 -1.00 dB
PL12 14.46 dB
PL13 15.00 dB
SFO2 400.1316005 MHz

F2 - Processing parameters
SI 32768
SF 100.6127690 MHz
WDW EM
SSB 0
LB 1.00 Hz
GB 0
PC 1.40



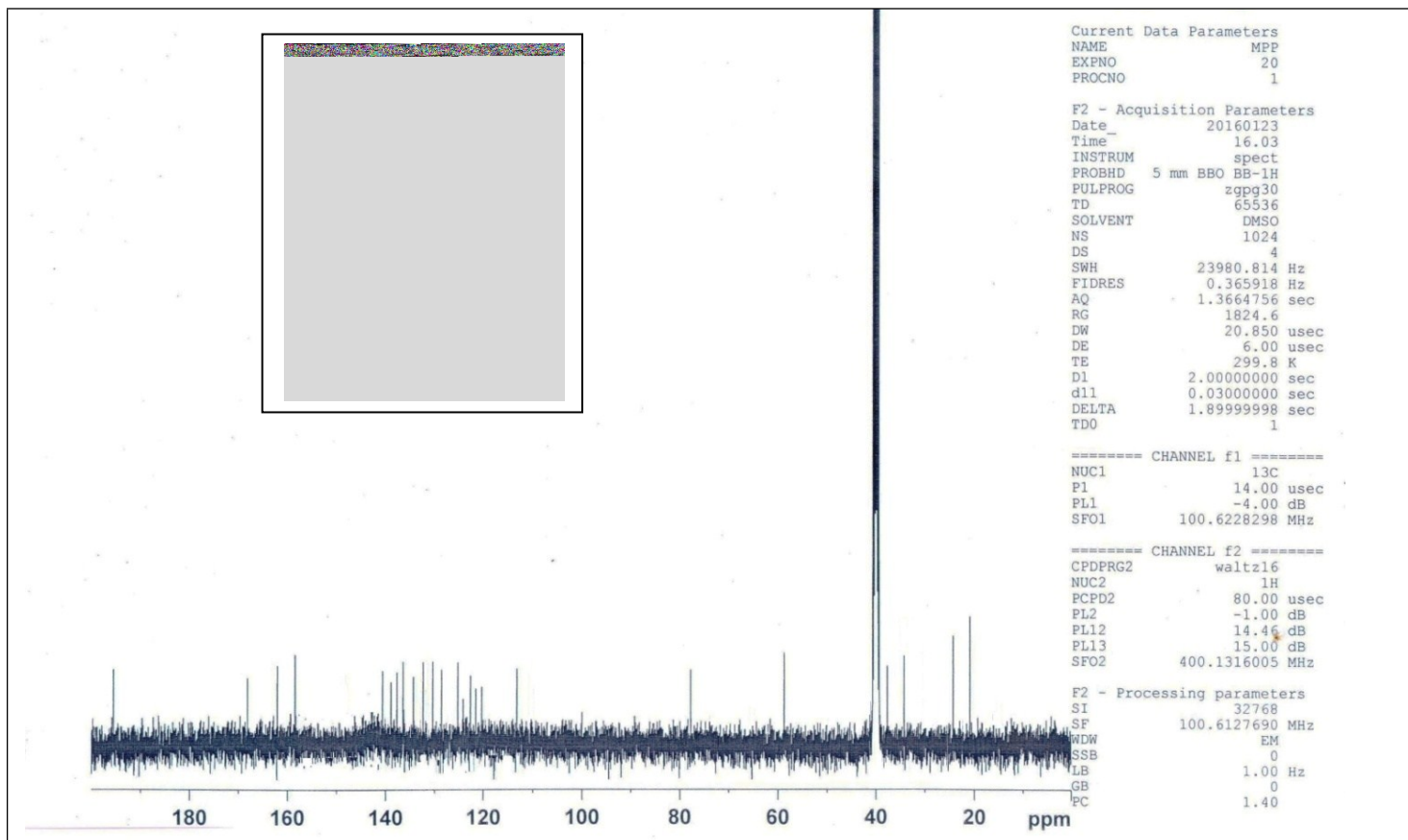
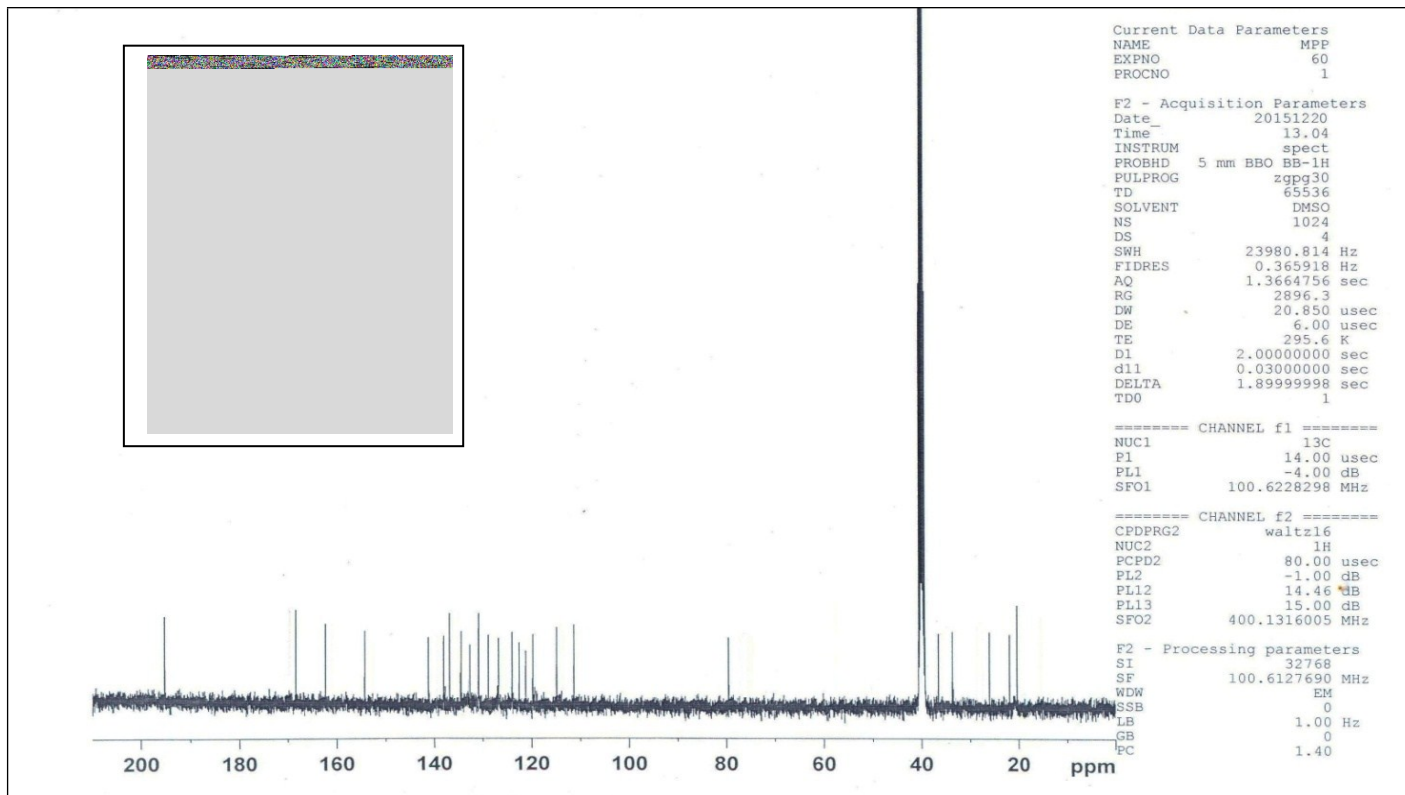
Current Data Parameters
NAME MPP
EXPNO 66
PROCNO 1

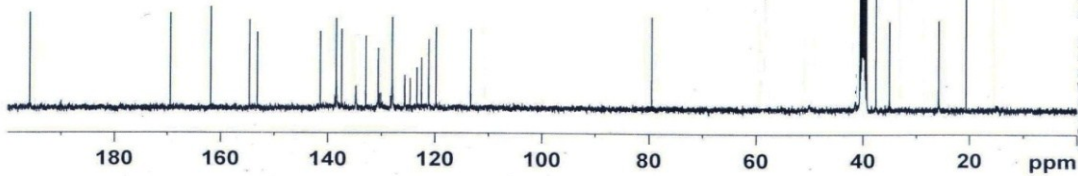
F2 - Acquisition Parameters
Date 20151221
Time 16.16
INSTRUM spect
PROBHD 5 mm BBO BB-1H
PULPROG zgpg30
TD 65536
SOLVENT DMSO
NS 1024
DS 4
SWH 23980.814 Hz
FIDRES 0.365918 Hz
AQ 1.3664756 sec
RG 4096
DW 20.850 usec
DE 6.00 usec
TE 295.3 K
D1 2.00000000 sec
d11 0.03000000 sec
DELTA 1.89999998 sec
TD0 1

===== CHANNEL f1 =====
NUC1 13C
P1 14.00 usec
PL1 -4.00 dB
SFO1 100.6228298 MHz

===== CHANNEL f2 =====
CPDPRG2 waltz16
NUC2 1H
PCPD2 80.00 usec
PL2 -1.00 dB
PL12 14.46 dB
PL13 15.00 dB
SFO2 400.1316005 MHz

F2 - Processing parameters
SI 32768
SF 100.6127690 MHz
WDW EM
SSB 0
LB 1.00 Hz
GB 0
PC 1.40





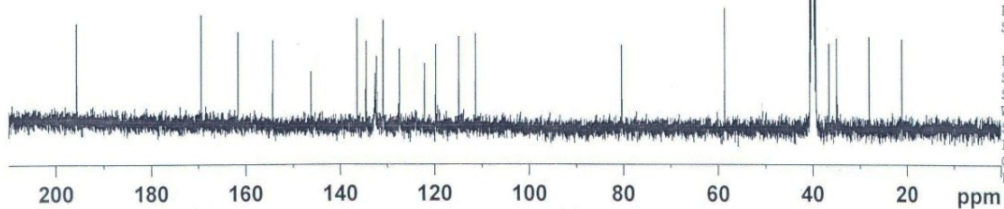
```
Current Data Parameters
NAME          MPP
EXPNO         32
PROCNO        1

F2 - Acquisition Parameters
Date_         20160111
Time          16.53
INSTRUM       spect
PROBHD        5 mm BBO BB-1H
PULPROG       zgpg30
TD            65536
SOLVENT       DMSO
NS            1024
DS            4
SWH           23980.814 Hz
FIDRES        0.365918 Hz
AQ            1.3664756 sec
RG            32768
DW            20.850 usec
DE            6.00 usec
TE            296.9 K
D1            2.00000000 sec
d11           0.03000000 sec
DELTA         1.89999998 sec
TD0           1

===== CHANNEL f1 =====
NUC1          13C
P1            14.00 usec
PL1           -4.00 dB
SFO1          100.6228298 MHz

===== CHANNEL f2 =====
CPDPRG2       waltz16
NUC2           1H
PCPD2         80.00 usec
PL2           -1.00 dB
PL12          14.46 dB
PL13          15.00 dB
SFO2          400.1316005 MHz

F2 - Processing parameters
SI            32768
SF            100.6127690 MHz
WDW           EM
SSB           0
LB            1.00 Hz
GB            0
PC            1.40
```



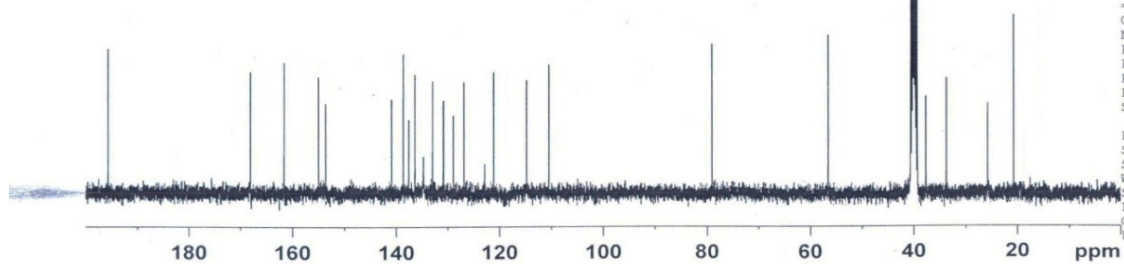
```
Current Data Parameters
NAME          MPP
EXPNO         64
PROCNO        1

F2 - Acquisition Parameters
Date_         20151221
Time          13.44
INSTRUM       spect
PROBHD        5 mm BBO BB-1H
PULPROG       zgpg30
TD            65536
SOLVENT       DMSO
NS            1024
DS            4
SWH           23980.814 Hz
FIDRES        0.365918 Hz
AQ            1.3664756 sec
RG            2896.3
DW            20.850 usec
DE            6.00 usec
TE            295.4 K
D1            2.00000000 sec
d11           0.03000000 sec
DELTA         1.89999998 sec
TD0           1

===== CHANNEL f1 =====
NUC1          13C
P1            14.00 usec
PL1           -4.00 dB
SFO1          100.6228298 MHz

===== CHANNEL f2 =====
CPDPRG2       waltz16
NUC2           1H
PCPD2         80.00 usec
PL2           -1.00 dB
PL12          14.46 dB
PL13          15.00 dB
SFO2          400.1316005 MHz

F2 - Processing parameters
SI            32768
SF            100.6127690 MHz
WDW           EM
SSB           0
LB            1.00 Hz
GB            0
PC            1.40
```



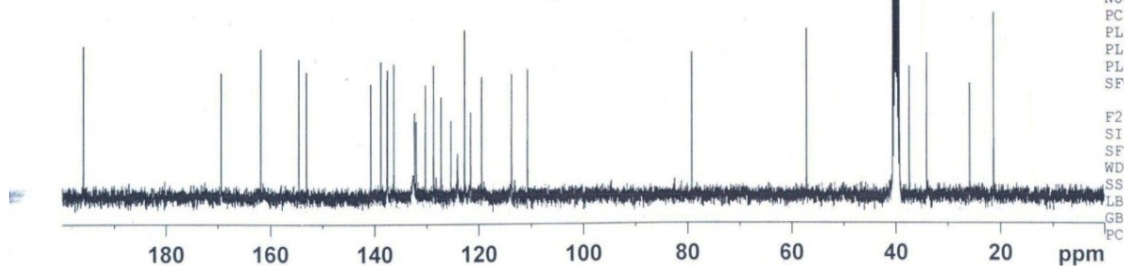
Current Data Parameters
NAME MPP
EXPNO 31
PROCNO 1

F2 - Acquisition Parameters
Date_ 20160111
Time 14.38
INSTRUM spect
PROBHD 5 mm BBO BB-1H
PULPROG zgpg30
TD 65536
SOLVENT DMSO
NS 1024
DS 4
SWH 23980.814 Hz
FIDRES 0.365918 Hz
AQ 1.3664756 sec
RG 11585.2
DW 20.850 usec
DE 6.00 usec
TE 296.7 K
D1 2.00000000 sec
d11 0.03000000 sec
DELTA 1.89999998 sec
TD0 1

===== CHANNEL f1 =====
NUC1 13C
P1 14.00 usec
PL1 -4.00 dB
SFO1 100.6228298 MHz

===== CHANNEL f2 =====
CPDPRG2 waltz16
NUC2 1H
PCPD2 80.00 usec
PL2 -1.00 dB
PL12 14.46 dB
PL13 15.00 dB
SFO2 400.1316005 MHz

F2 - Processing parameters
SI 32768
SF 100.6127690 MHz
WDW EM
SSB 0
LB 1.00 Hz
GB 0
PC 1.40



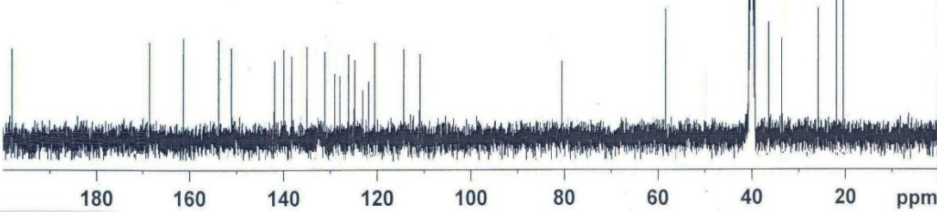
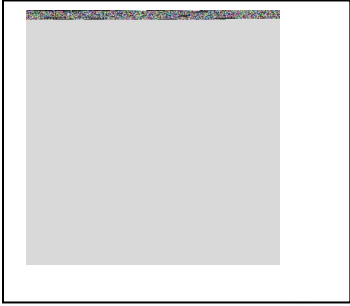
Current Data Parameters
NAME MPP
EXPNO 30
PROCNO 1

F2 - Acquisition Parameters
Date_ 20160711
Time 13.32
INSTRUM spect
PROBHD 5 mm BBO BB-1H
PULPROG zgpg30
TD 65536
SOLVENT DMSO
NS 1024
DS 4
SWH 23980.814 Hz
FIDRES 0.365918 Hz
AQ 1.3664756 sec
RG 11585.2
DW 20.850 usec
DE 6.00 usec
TE 296.6 K
D1 2.00000000 sec
d11 0.03000000 sec
DELTA 1.89999998 sec
TD0 1

===== CHANNEL f1 =====
NUC1 13C
P1 14.00 usec
PL1 -4.00 dB
SFO1 100.6228298 MHz

===== CHANNEL f2 =====
CPDPRG2 waltz16
NUC2 1H
PCPD2 80.00 usec
PL2 -1.00 dB
PL12 14.46 dB
PL13 15.00 dB
SFO2 400.1316005 MHz

F2 - Processing parameters
SI 32768
SF 100.6127690 MHz
WDW EM
SSB 0
LB 1.00 Hz
GB 0
PC 1.40



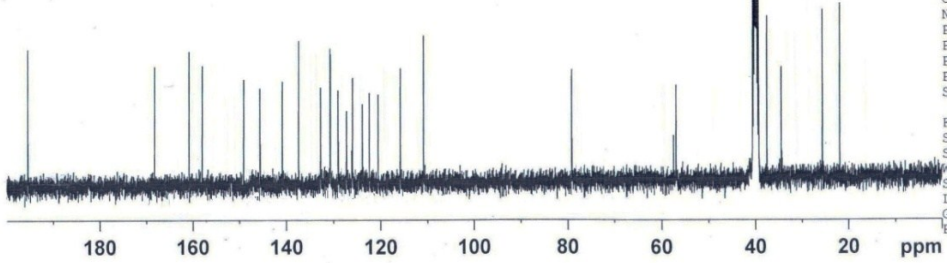
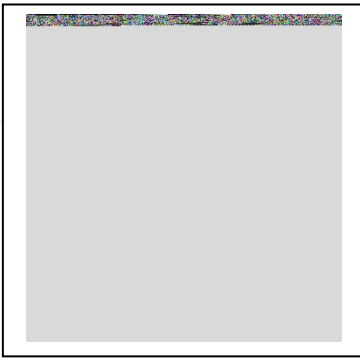
```
Current Data Parameters
NAME          MPP
EXPNO         27
PROCNO        1

F2 - Acquisition Parameters
Date_         20160108
Time          16.57
INSTRUM       spect
PROBHD        5 mm BBO BB-1H
PULPROG       zgpg30
TD            65536
SOLVENT       DMSO
NS            1024
DS            4
SWH           23980.814 Hz
FIDRES        0.365918 Hz
AQ            1.3664756 sec
RG            18390.4
DW            20.850 usec
DE            6.00 usec
TE            297.0 K
D1            2.00000000 sec
d11           0.03000000 sec
DELTA         1.89999998 sec
TD0           1

===== CHANNEL f1 =====
NUC1          13C
P1            14.00 usec
PL1           -4.00 dB
SF01          100.6228298 MHz

===== CHANNEL f2 =====
CPDPRG2       waltz16
NUC2           1H
PCPD2         80.00 usec
PL2           -1.00 dB
PL12          14.46 dB
PL13          15.00 dB
SF02          400.1316005 MHz

F2 - Processing parameters
SI            32768
SF            100.6127690 MHz
WDW           EM
SSB           0
LB            1.00 Hz
GB            0
PC            1.40
```



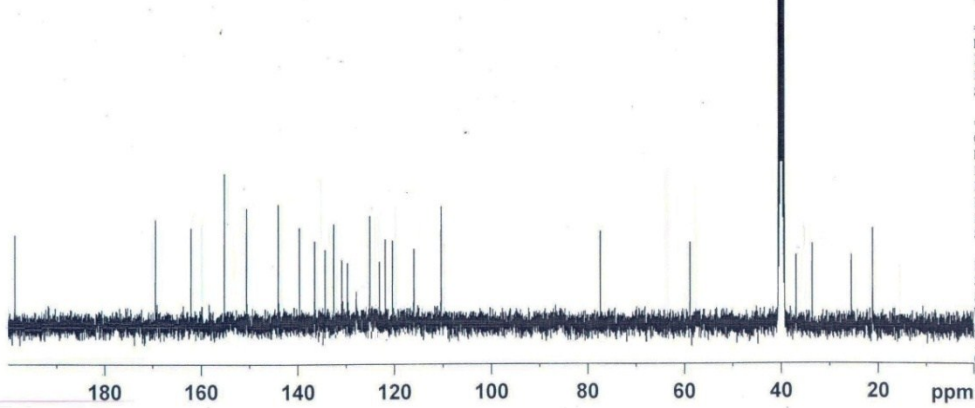
```
Current Data Parameters
NAME          MPP
EXPNO         26
PROCNO        1

F2 - Acquisition Parameters
Date_         20160108
Time          15.22
INSTRUM       spect
PROBHD        5 mm BBO BB-1H
PULPROG       zgpg30
TD            65536
SOLVENT       DMSO
NS            1024
DS            4
SWH           23980.814 Hz
FIDRES        0.365918 Hz
AQ            1.3664756 sec
RG            4597.6
DW            20.850 usec
DE            6.00 usec
TE            296.7 K
D1            2.00000000 sec
d11           0.03000000 sec
DELTA         1.89999998 sec
TD0           1

===== CHANNEL f1 =====
NUC1          13C
P1            14.00 usec
PL1           -4.00 dB
SF01          100.6228298 MHz

===== CHANNEL f2 =====
CPDPRG2       waltz16
NUC2           1H
PCPD2         80.00 usec
PL2           -1.00 dB
PL12          14.46 dB
PL13          15.00 dB
SF02          400.1316005 MHz

F2 - Processing parameters
SI            32768
SF            100.6127690 MHz
WDW           EM
SSB           0
LB            1.00 Hz
GB            0
PC            1.40
```



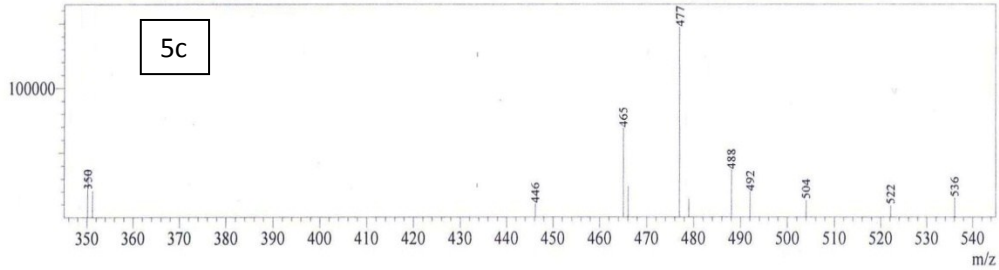
Current Data Parameters
NAME MPP
EXPNO 28
PROCNO 1

F2 - Acquisition Parameters
Date_ 20160111
Time 12.08
INSTRUM spect
PROBHD 5 mm BBO BB-1H
PULPROG zgpg30
TD 65536
SOLVENT DMSO
NS 914
DS 4
SWH 23980.814 Hz
FIDRES 0.365918 Hz
AQ 1.3664756 sec
RG 11585.2
DW 20.850 usec
DE 6.00 usec
TE 296.1 K
D1 2.0000000 sec
d11 0.0300000 sec
DELTA 1.89999998 sec
TD0 1

----- CHANNEL f1 -----
NUC1 13C
P1 14.00 usec
PL1 -4.00 dB
SFO1 100.6228298 MHz

----- CHANNEL f2 -----
CPDPRG2 waltz16
NUC2 1H
PCPD2 80.00 usec
PL2 -1.00 dB
PL12 14.46 dB
PL13 15.00 dB
SFO2 400.1316005 MHz

F2 - Processing parameters
SI 32768
SF 100.6127690 MHz
WDW EM
SSB 0
LB 1.00 Hz
GB 0
PC 1.40



MS Spectrum

Line#:1 R.Time:----(Scan#:----)

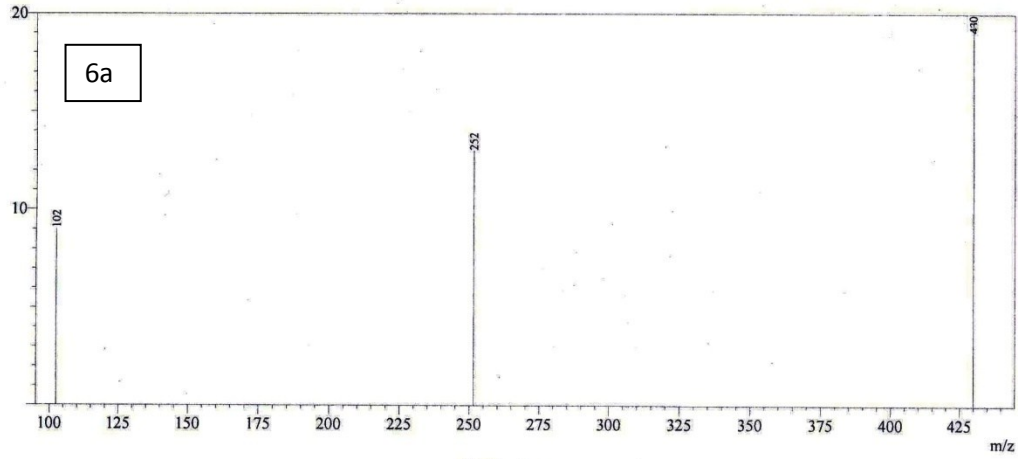
MassPeaks:12

Spectrum Mode:Averaged 3.933-5.133(237-309) Base Peak:477(164790)

BG Mode:Averaged 4.867-5.183(293-312) Segment 1 - Event 1

Sr. No.	m/z	Absolute Intensity	Relative Intensity
1	350.10	21926	13.31
2	351.20	21272	12.91
3	446.15	10538	6.39
4	465.05	68879	41.80
5	466.05	23933	14.52
6	477.05	164790	100.00
7	479.00	14166	8.60
8	488.05	36563	22.19
9	492.05	19828	12.03
10	504.00	13330	8.09
11	522.15	9201	5.58
12	536.05	14970	9.08

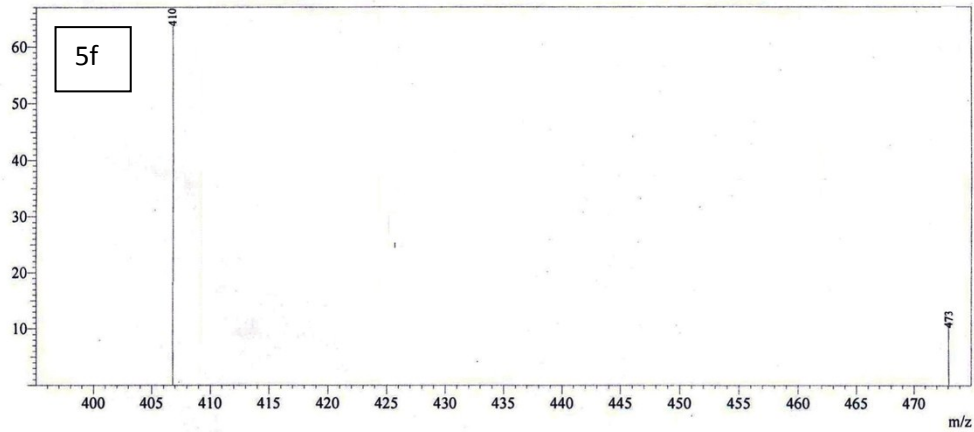
Processed by: [unreadable] Date: [unreadable]



MS Spectrum

Line#:1 R.Time:----(Scan#:----)
 MassPeaks:3
 Spectrum Mode:Averaged 0.317-1.533(20-93) Base Peak:430(20)
 BG Mode:None Segment 1 - Event 1
 Precursor Ion Scan:m/z 430.03

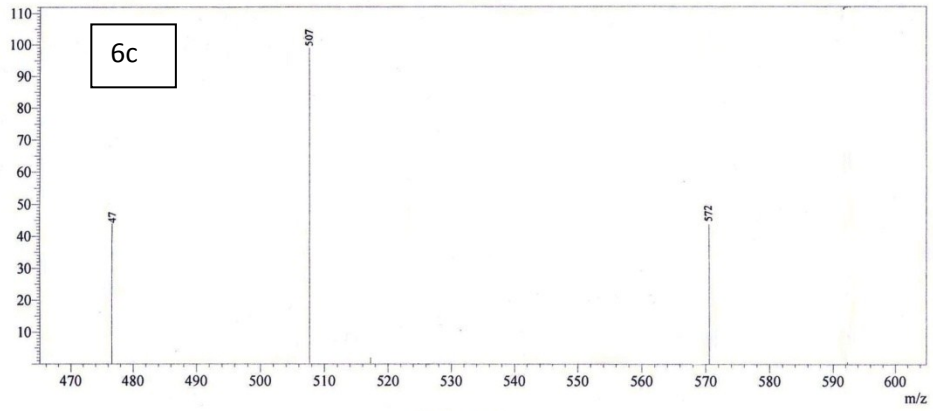
Sr. No.	m/z	Absolute Intensity	Relative Intensity
1	102.40	9	45.00
2	251.50	13	65.00
3	430.03	20	100.00



MS Spectrum

Line#:1 R.Time:----(Scan#:----)
 MassPeaks:2
 Spectrum Mode:Averaged 0.183-1.733(12-105) Base Peak:410(67)
 BG Mode:None Segment 1 - Event 1
 Precursor Ion Scan:m/z 410.10

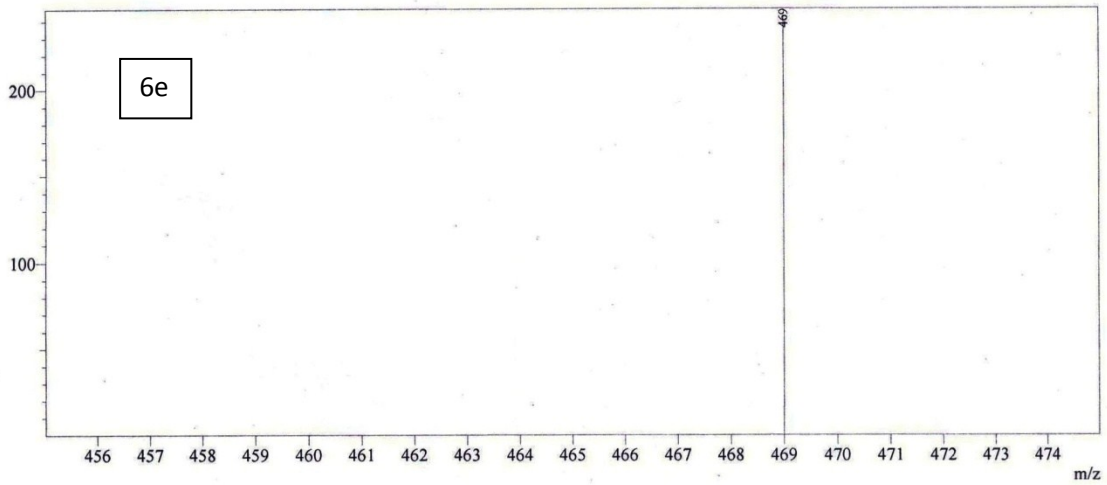
Sr. No.	m/z	Absolute Intensity	Relative Intensity
1	410.10	67	100.00
2	473.10	10	14.93



MS Spectrum

Line#:1 R.Time:---(Scan#:---)
 MassPeaks:3
 Spectrum Mode:Averaged 0.050-0.967(4-59) Base Peak:507(112)
 BG Mode:None Segment 1 - Event 1
 Precursor Ion Scan:m/z 507.30

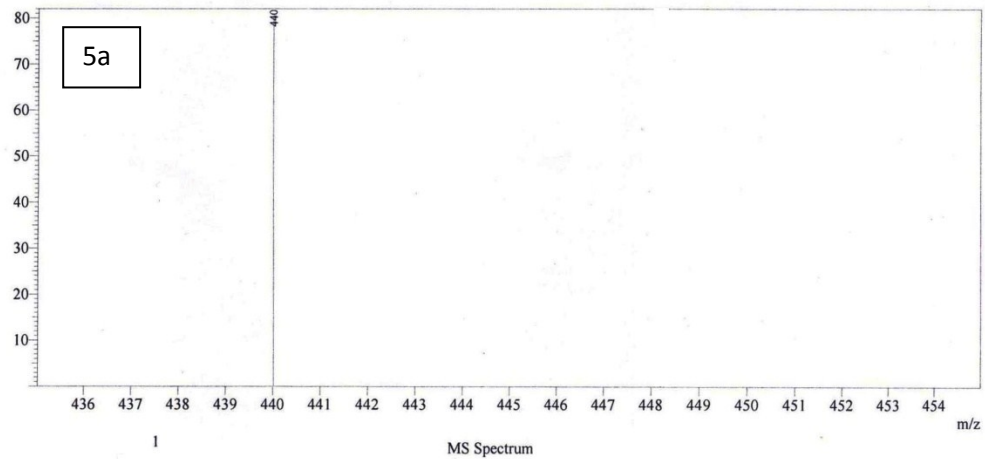
Sr. No.	m/z	Absolute Intensity	Relative Intensity
1	476.60	44	39.29
2	507.30	112	100.00
3	572.30	44	39.29



MS Spectrum

Line#:1 R.Time:---(Scan#:---)
 MassPeaks:1
 Spectrum Mode:Averaged 0.700-0.817(43-50) Base Peak:469(247)
 BG Mode:None Segment 1 - Event 1
 Precursor Ion Scan:m/z 469.40

Sr. No.	m/z	Absolute Intensity	Relative Intensity
1	469.40	247	100.00



Line#: 1 R. Time: ----(Scan#: ----)
 MassPeaks: 1
 Spectrum Mode: Averaged 0.933-1.117(57-68) Base Peak: 440(82)
 BG Mode: None Segment 1 - Event 1
 Precursor Ion Scan: m/z 440.01

Sr. No.	m/z	Absolute Intensity	Relative Intensity
1	440.01	82	100.00