

## **AIE-active conjugated polymer nanoparticles with red-emission for in vitro and in vivo imaging**

**Dongliang Yang,<sup>†a</sup> Shuwei Zhang,<sup>†b</sup> Yanling Hu,<sup>a</sup> Jia Chen,<sup>a</sup> Biqing Bao,<sup>a</sup> Lihui Yuwen,<sup>a</sup> Lixing Weng,<sup>\*c</sup> Yixiang Cheng,<sup>\*b</sup> Lianhui Wang<sup>\*a</sup>**

<sup>a</sup>Key Laboratory for Organic Electronics & Information Displays (KLOEID) and Institute of Advanced Materials (IAM), Nanjing University of Posts & Telecommunications, 9 Wenyuan Road, Nanjing 210046, China

<sup>b</sup>Key Lab of Mesoscopic Chemistry of MOE, School of Chemistry and Chemical Engineering, Nanjing University, Nanjing 210093, China

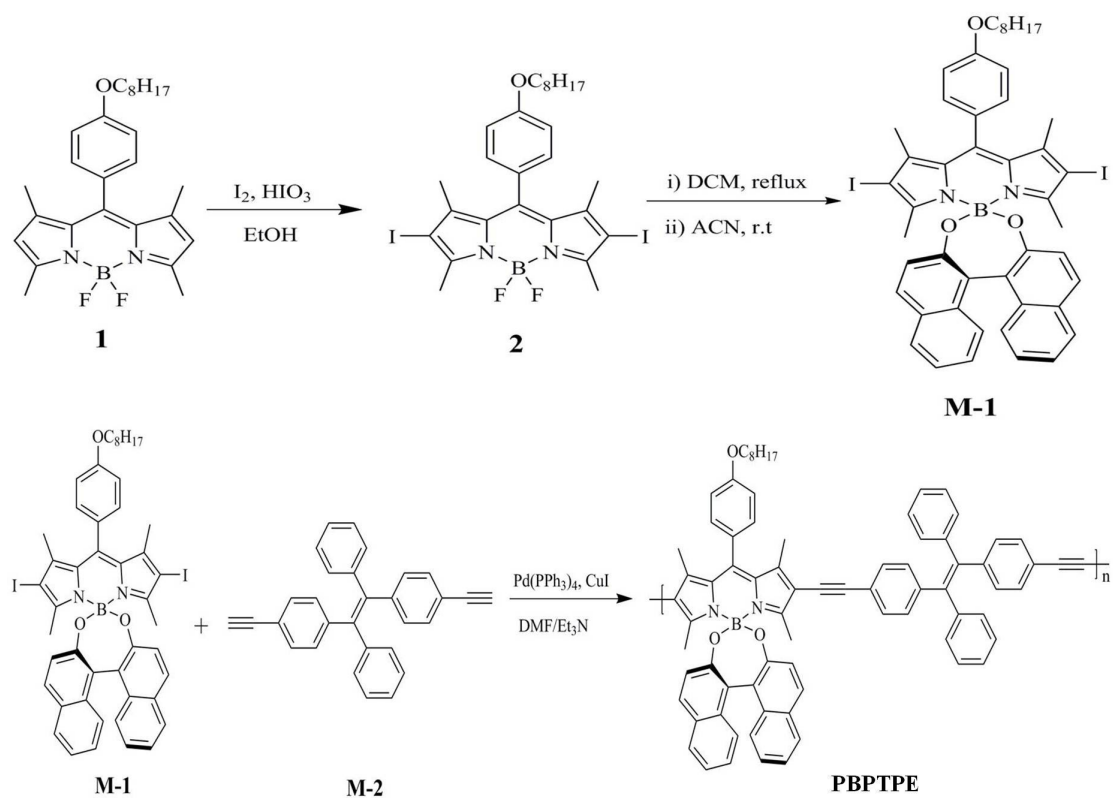
<sup>c</sup>College of Geography and Biological Information, Nanjing University of Posts and Telecommunications, Nanjing 210046, China

<sup>†</sup>These authors contributed equally to this article.

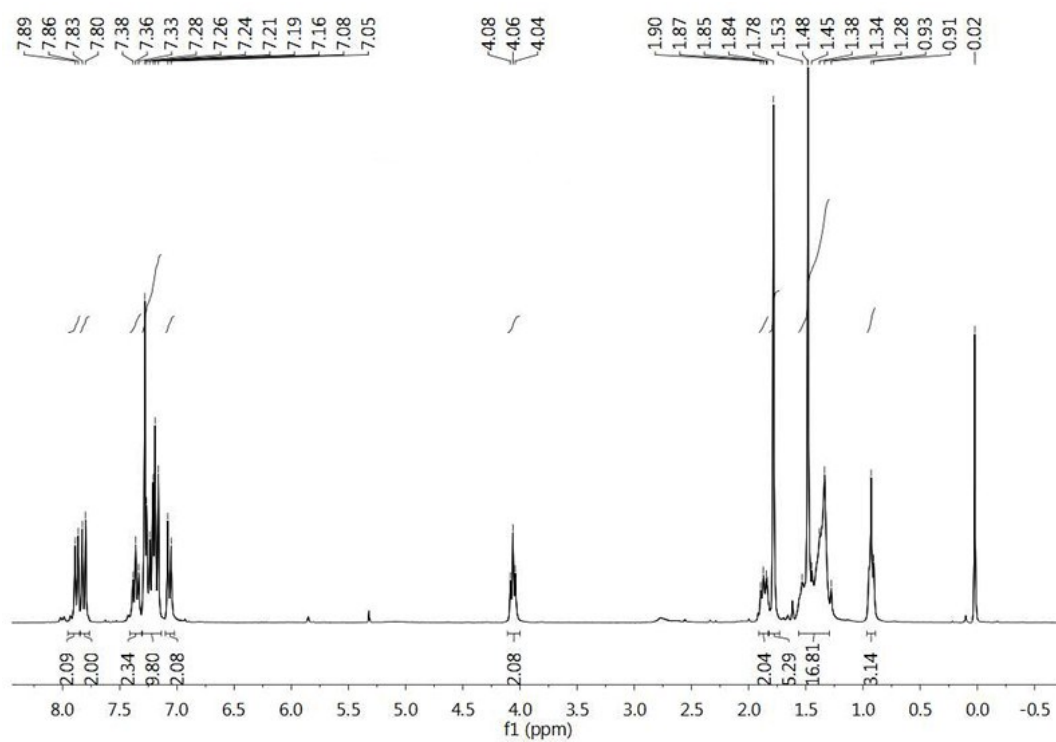
Correspondence to: Lianhui Wang (E-mail: iamlhwan@njupt.edu.cn), Yixiang Cheng (E-mail: yxcheng@nju.edu.cn), Lixing Weng (E-mail: lxweng@njupt.edu.cn)

### **Contents:**

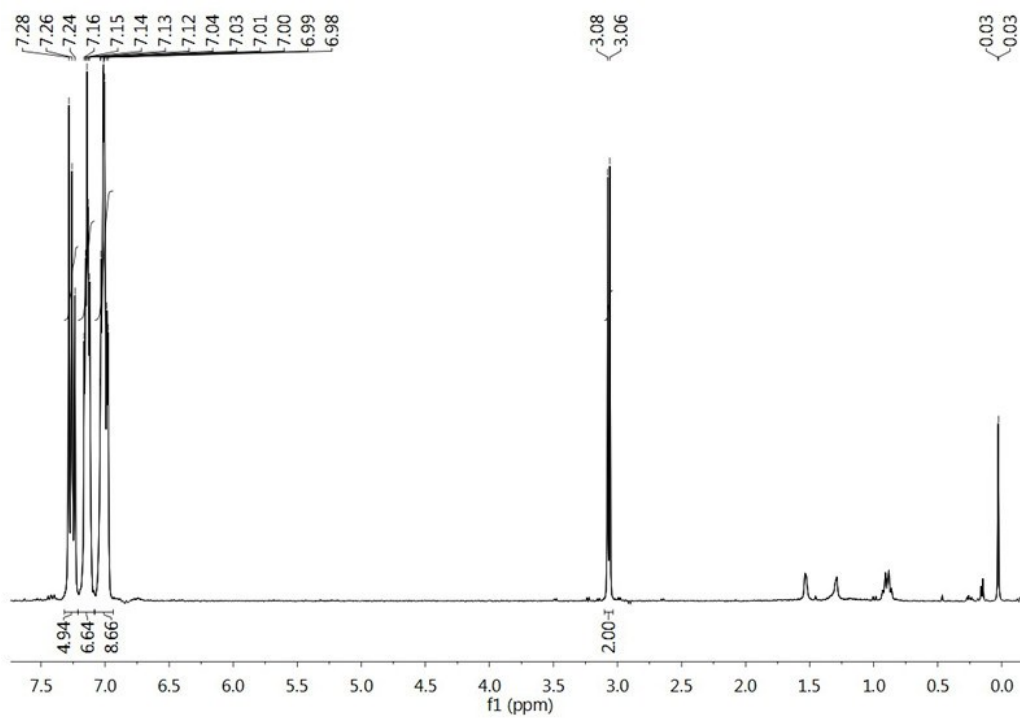
- 1. Synthetic route of the monomer and polymer.**
- 2. <sup>1</sup>H NMR spectra of compounds.**
- 3. Absorbance spectra and fluorescent spectra of PBPTPE (1.0×10<sup>-5</sup> mol L<sup>-1</sup>) in dichloromethane/hexane mixtures.**
- 4. Confocal fluorescent imaging.**



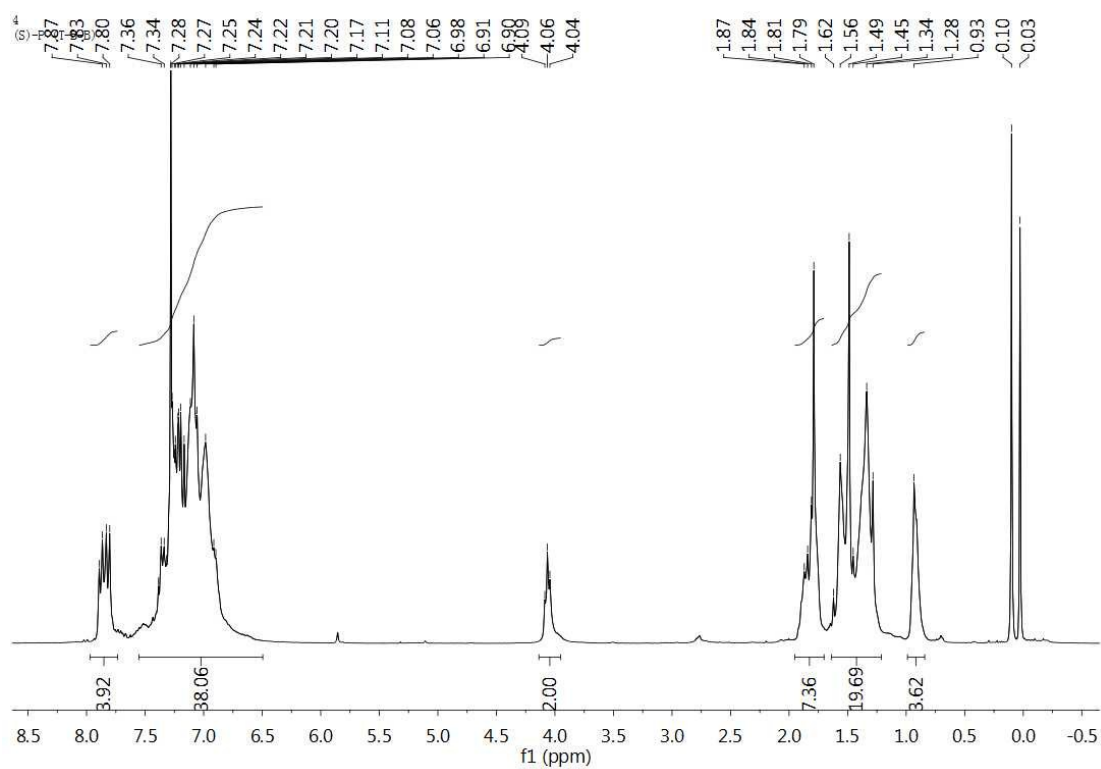
**Scheme S1** synthetic route of the monomer and polymer.



**Figure S1.** <sup>1</sup>H NMR of M-1 in CDCl<sub>3</sub>.

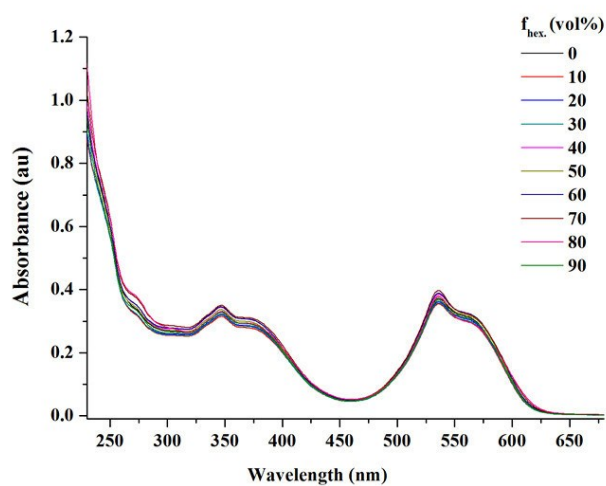


**Figure S2.** <sup>1</sup>H NMR of M-2 in CDCl<sub>3</sub>.

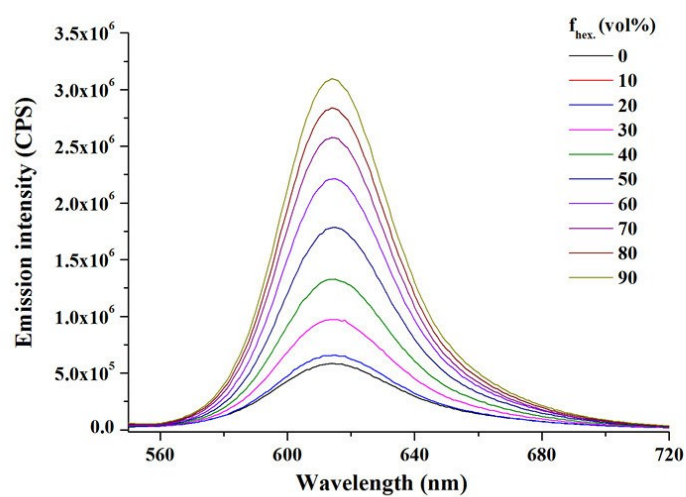


**Figure S3.**  $^1\text{H}$  NMR of PBPTPE in  $\text{CDCl}_3$ .

## 2. Absorbance spectra and fluorescent spectra of PBPTPE ( $1.0 \times 10^{-5}$ mol $\text{L}^{-1}$ ) in dichloromethane/hexane mixtures.

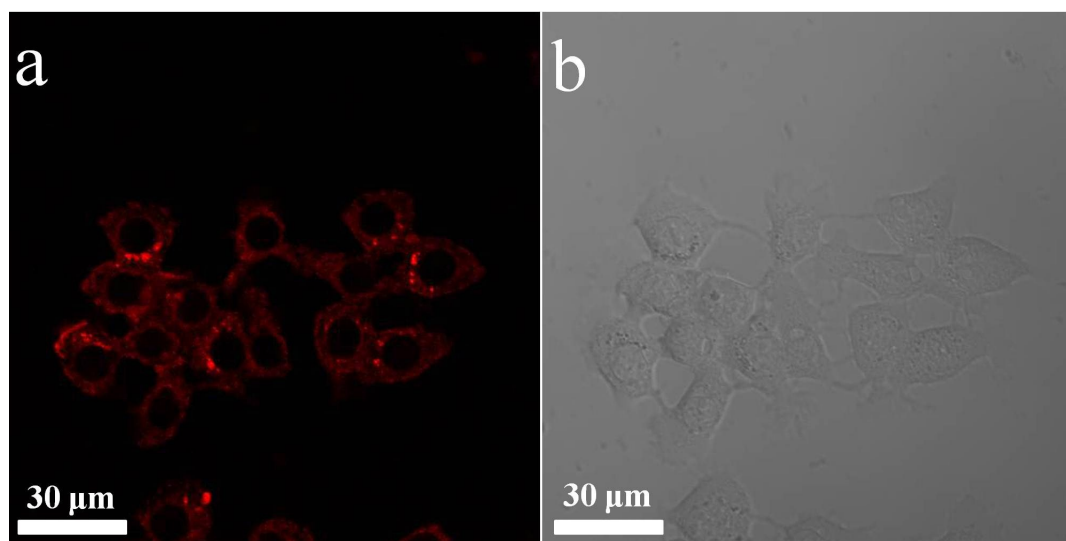


**Figure S4.** UV-vis spectra of PBPTPE in dichloromethane/hexane mixtures. Solution concentration:  $1.0 \times 10^{-5}$  mol  $\text{L}^{-1}$ .



**Figure S5.** Fluorescent spectra of PBPTPE in dichloromethane/hexane mixtures. Solution concentration:  $1.0 \times 10^{-5} \text{ mol L}^{-1}$ .

### 3. Confocal fluorescent imaging.



**Fig S6** Confocal laser scanning microscopy images of HeLa cells stained with the PBPTPE NPs ( $5 \mu\text{g/mL}$ ) for 2 h. (a) Bright-field channel. (b) Red fluorescence channel (PBPTPE NPs).

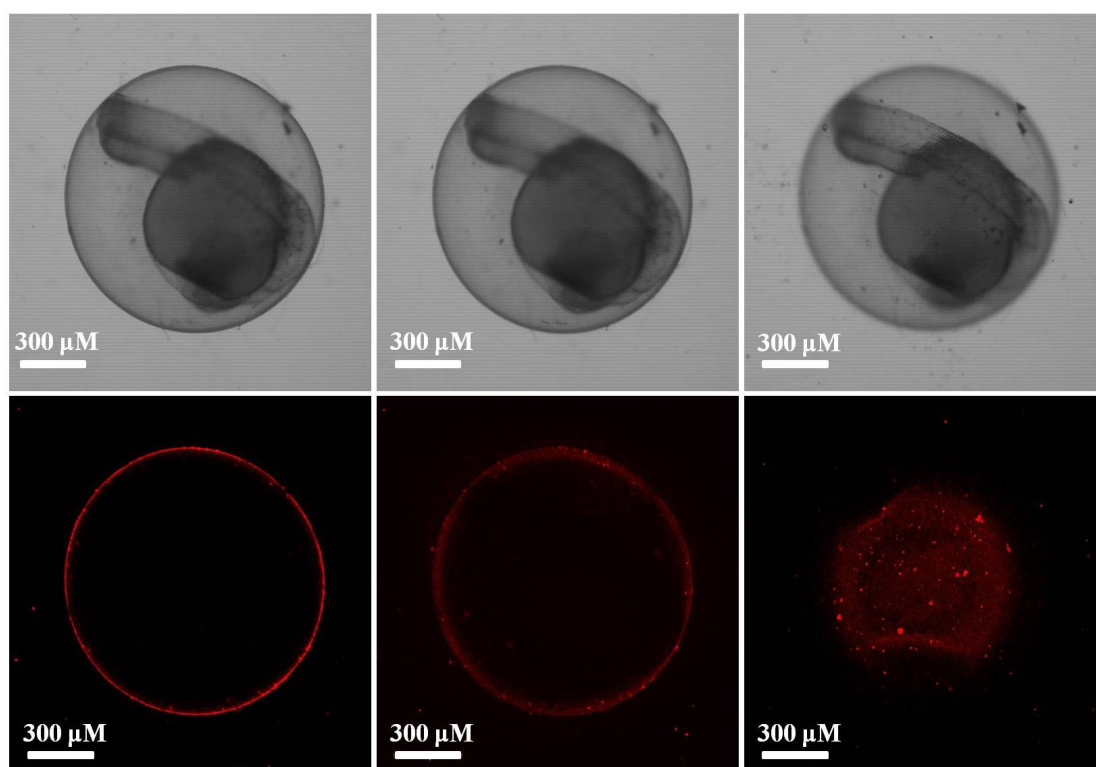


Figure S7. Fluorescence image with increasing depth from the up to the low part of the chorionated embryos (from left to right). Embryos were exposed to PBPTPE NPs for 24 h.