

Supporting Information

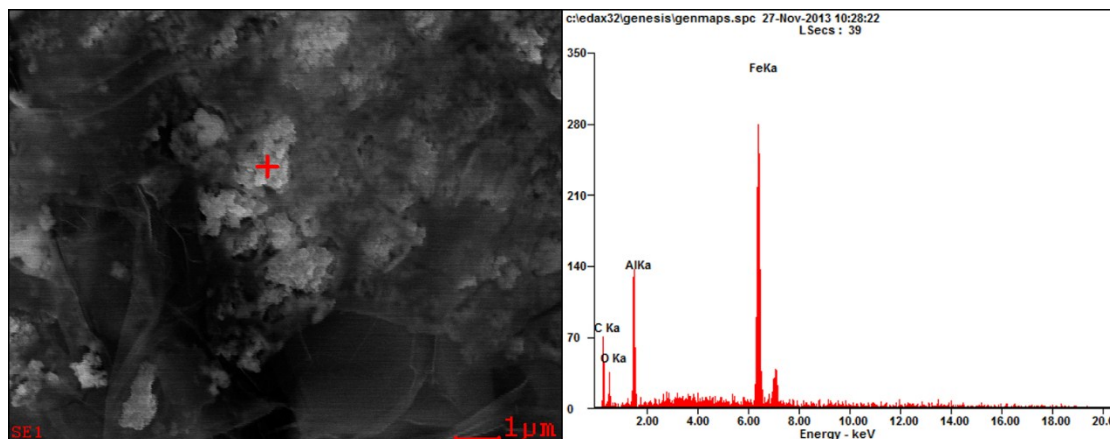


Fig. S1 The EDS spectra of $\text{Al}_2\text{O}_3\text{-Fe}_3\text{O}_4\text{-EG}$

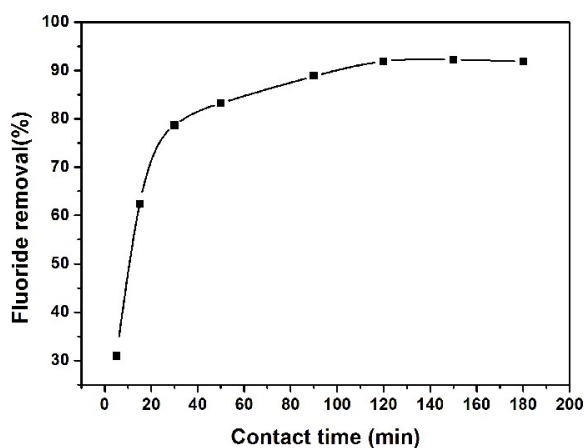


Fig. S2 The effect of contact time on fluoride removal efficiency of $\text{Al}_2\text{O}_3\text{-Fe}_3\text{O}_4\text{-EG}$ at $\text{pH}=4$, $T=30\ ^\circ\text{C}$, $m=0.2\ \text{g}$ and an initial fluoride concentration of $5\ \text{mg/L}$ in $50\ \text{mL}$ solution

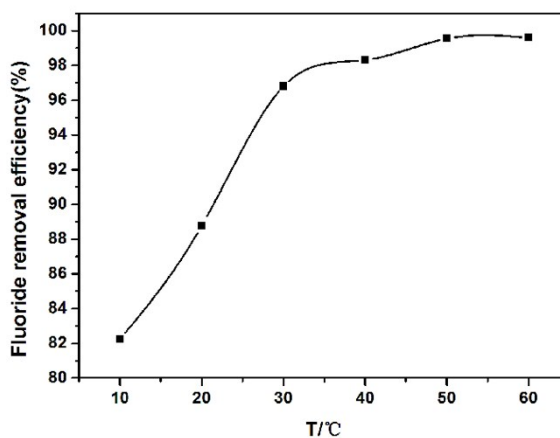


Fig. S3 The effect of temperature on fluoride removal efficiency of $\text{Al}_2\text{O}_3\text{-Fe}_3\text{O}_4\text{-EG}$ at $\text{pH}=4$, $t=120\ \text{min}$, $m=0.2\ \text{g}$ and an initial fluoride concentration of $5\ \text{mg/L}$ in $50\ \text{mL}$ solution

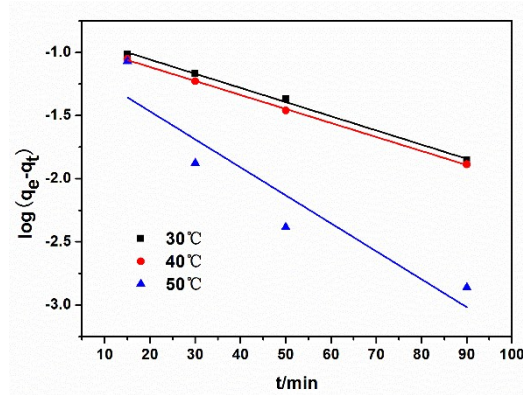


Fig. S4 Langmuir and Freundlich isotherm curves of fluoride adsorption on nano-sandwich at different temperatures

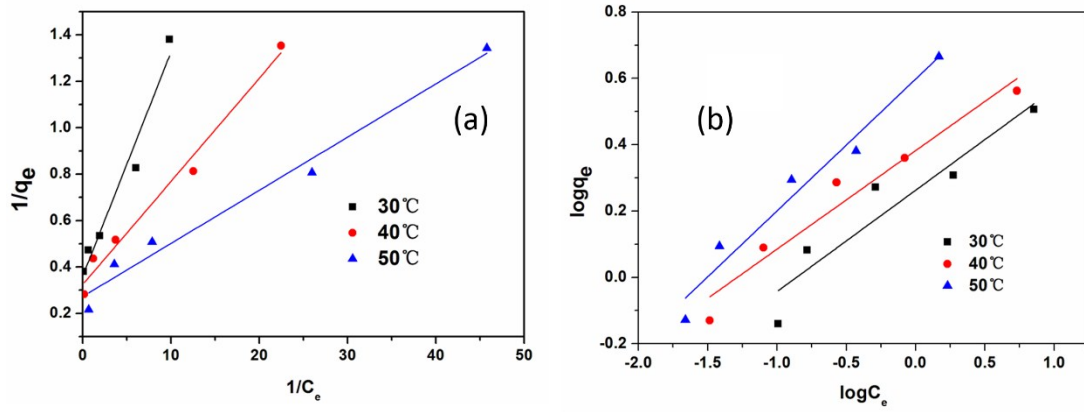


Fig. S5 Langmuir and Freundlich isotherm curves of fluoride adsorption on nano-sandwich at different temperatures