

Supplementary Informantion

Enhanced electrochemical capacitive performance of “sandwich-like” MWCNTs/PANI/PSS-GR electrode material

Ranran Zhang, Jun Qian ^{*}, Shuangli Ye, Yihua Zhou, Ziqiang Zhu

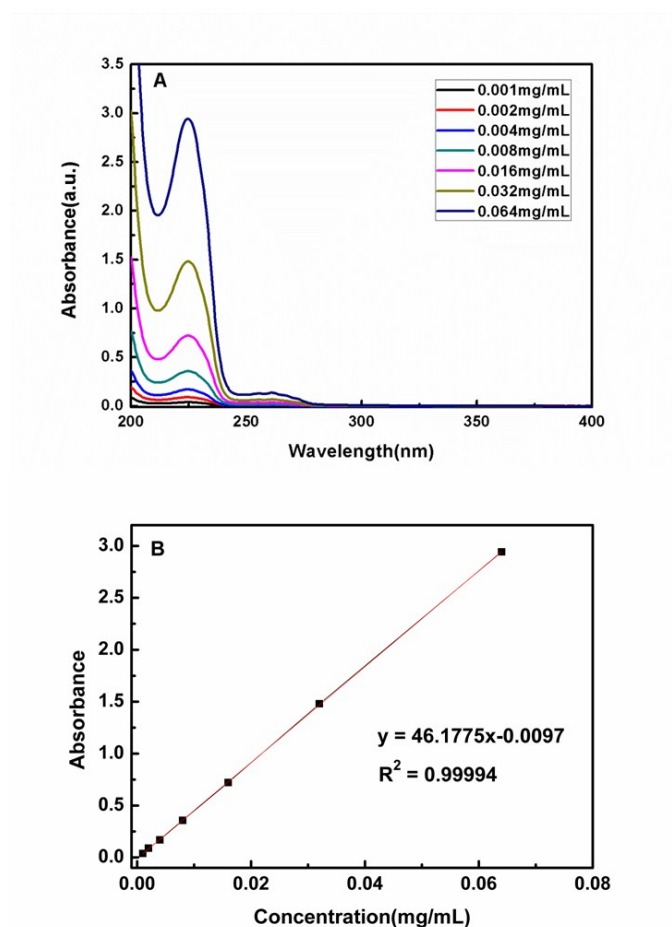


Fig. S1 UV-vis spectra of PSS with different concentrations (A) and calibration curve of PSS (B)

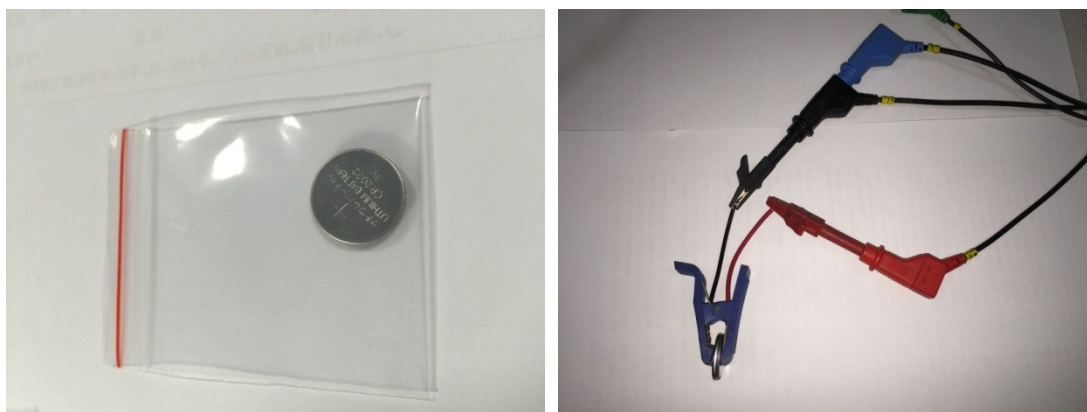


Fig. S2 Photographs of a two-electrode cell

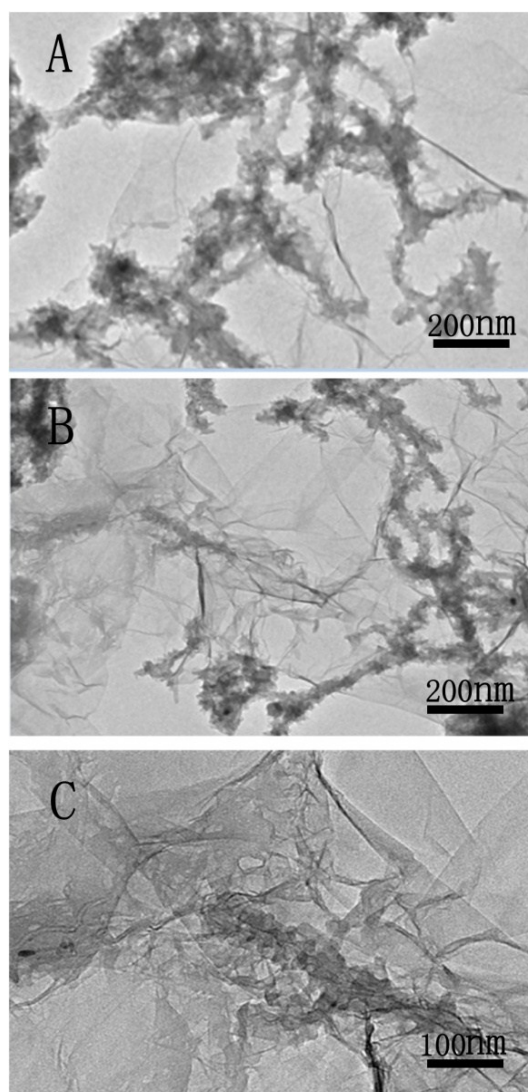


Fig.S3 The TEM images of MPG10 (A), MPG20 (B) and MPG30 (C)

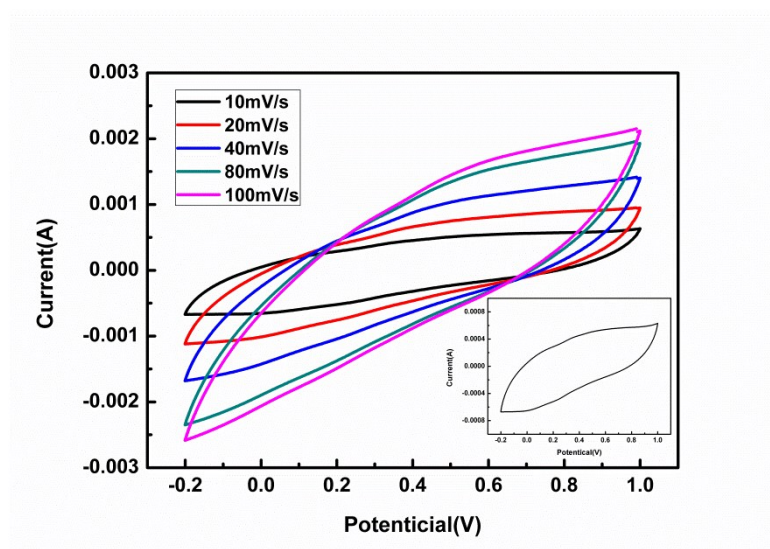


Fig. S4 CV curves of MPG20 at different scan rates, the inset is the CV curve at 10 mV/s (two-electrode system)

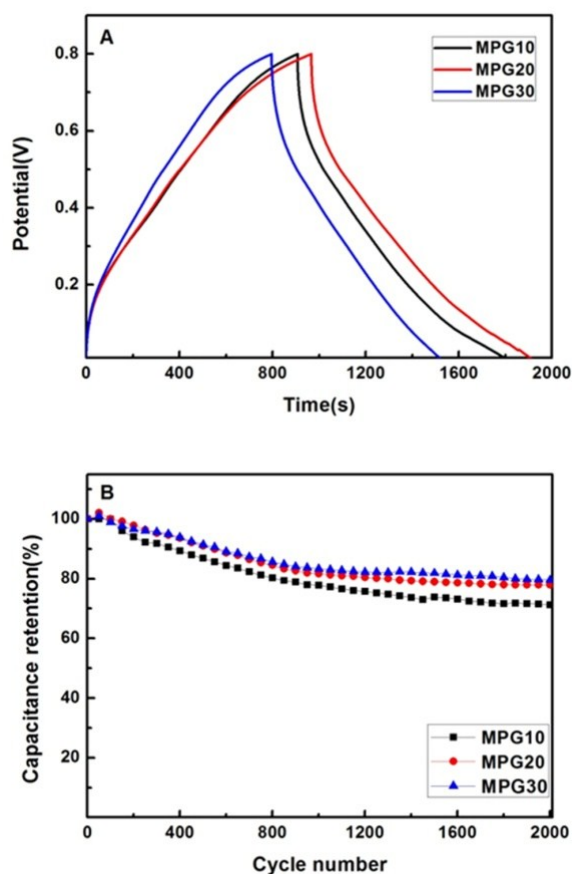


Fig. S5 GCD curves of MPG10, MPG20 and MPG30 at the current density of 0.5A g⁻¹ (A); Cycling stability of MPG10, MPG20 and MPG30 at the current density of 1A g⁻¹ in 1M H₂SO₄ (B) (three-electrode system)

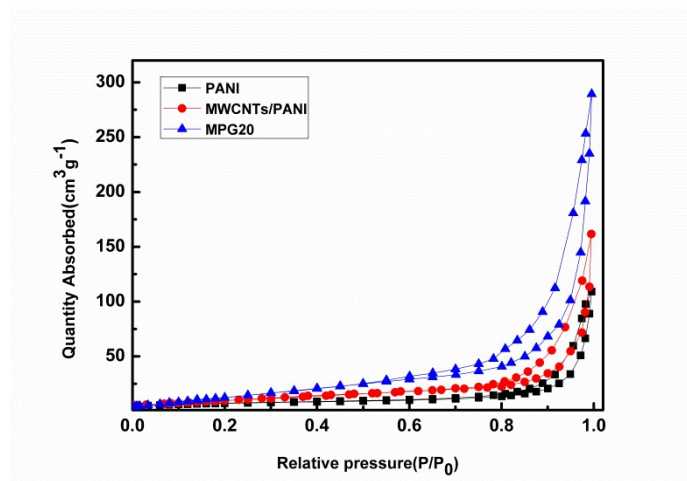


Fig.S6 N₂ adsorption-desorption isotherms of the PANI, MWCNTs/PANI and MPG20

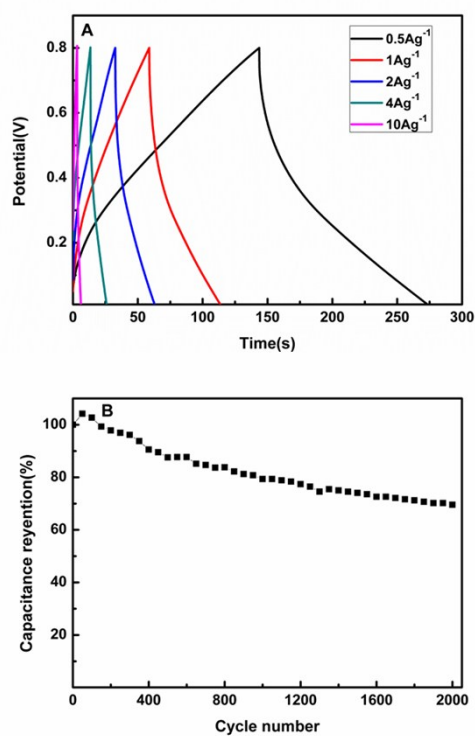


Fig. S7 GCD curves of MPG20 at different current density (A); Cycling stability of MPG20 at the current density of 1 Ag^{-1} (B) (two-electrode system)