

Supporting Information

Nanoscale Topography, Semiconductor Polarity and Surface Functionalization: Additive and Cooperative Effects on PC12 Cell Behavior

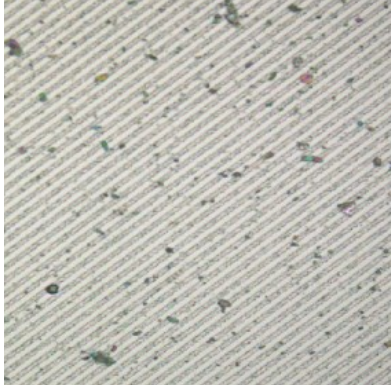
Patrick J. Snyder<sup>1</sup>, Ronny Kirste<sup>1,2</sup>, Ramon Collazo<sup>1</sup>, Albena Ivanisevic<sup>1</sup>

*<sup>1</sup>Department of Materials Science and Engineering, North Carolina State University, 911 Partners Way, Raleigh, North Carolina 27606, USA*

*<sup>2</sup>Adroit Materials, 2054 Kildaire Farm Rd., Suite 205, Cary, North Carolina 27518, USA*

Figure S1. Optical Microscopy Images of the different LPS structures.

GaN LPS



$\text{Al}_{0.8}\text{Ga}_{0.2}\text{N}$  LPS



$\text{Al}_{0.7}\text{Ga}_{0.3}\text{N}$  LPS

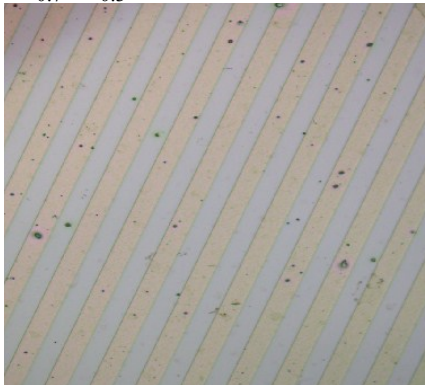
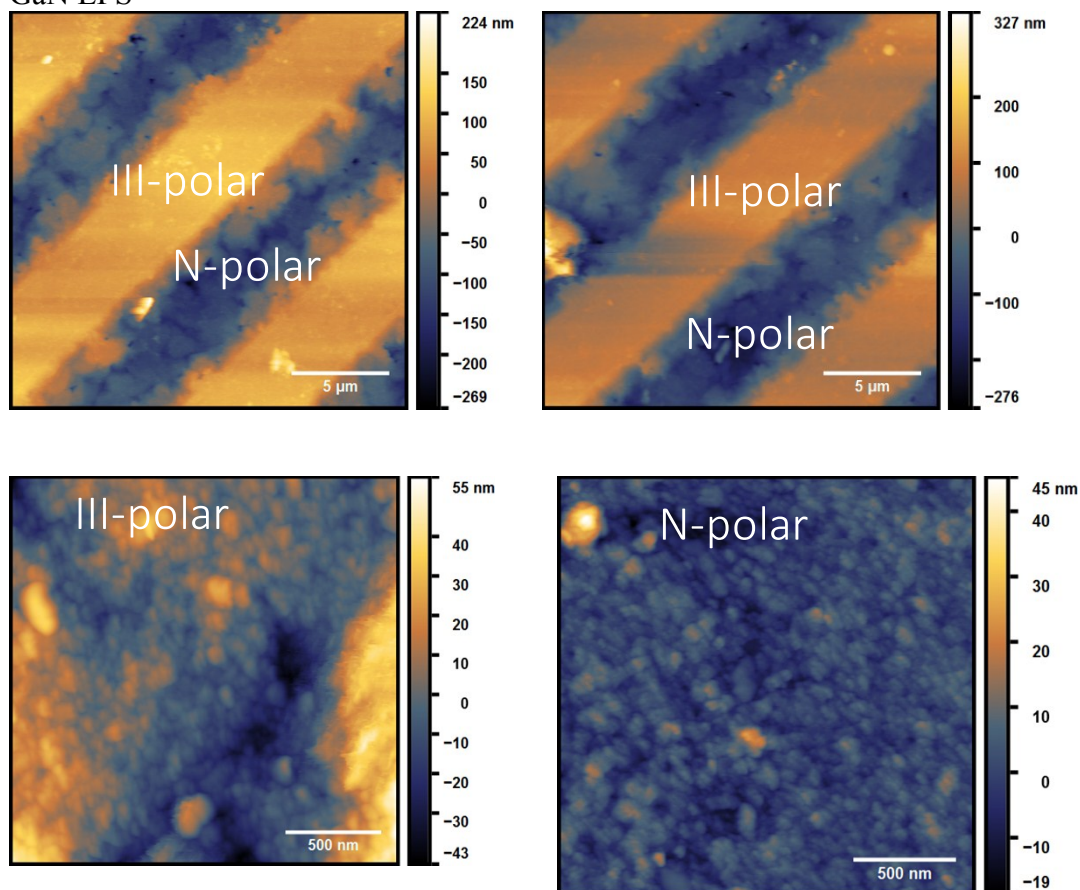
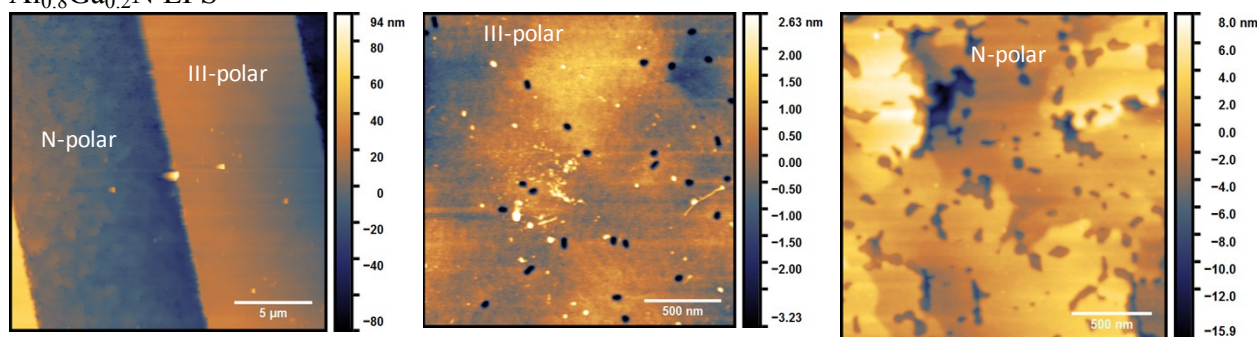


Figure S2. AFM Microscopy of the LPS structures

GaN LPS



$\text{Al}_{0.8}\text{Ga}_{0.2}\text{N}$  LPS



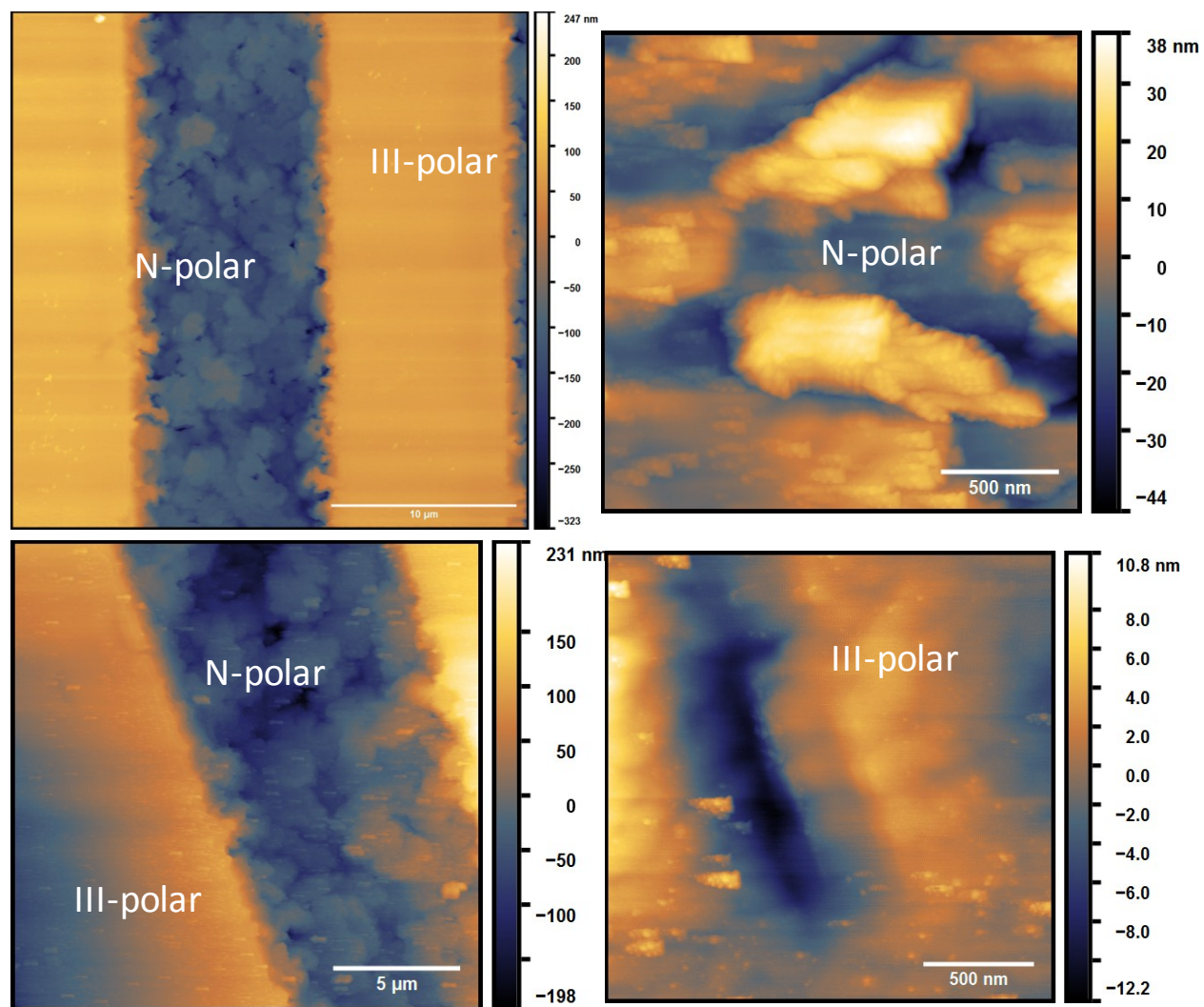


Figure S3. Representative confirmation of the presence of Cl on the surface after functionalization.

