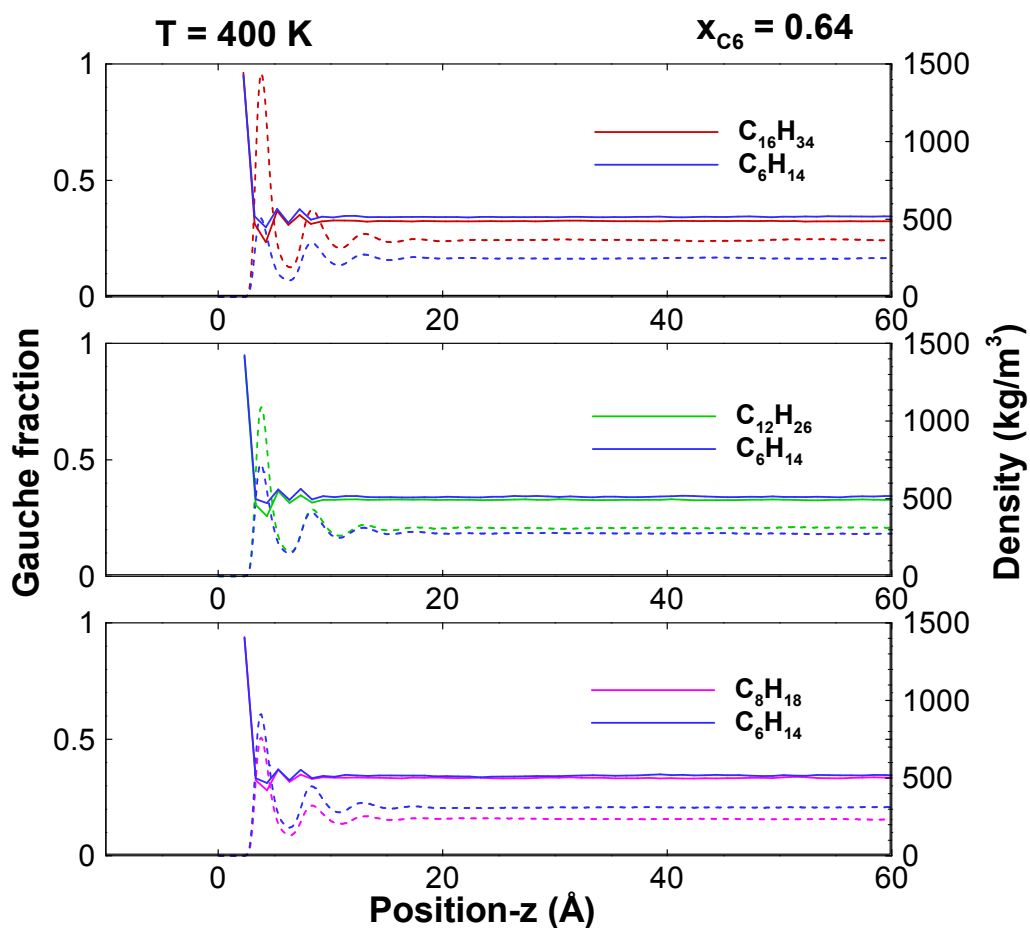
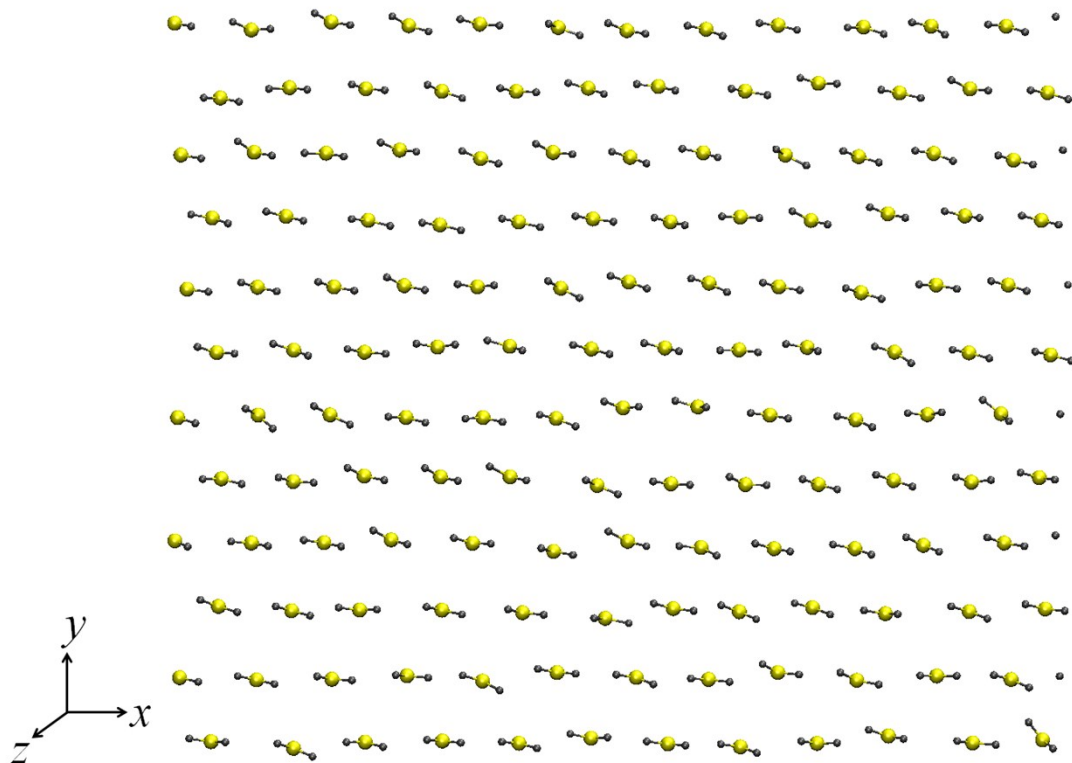


Supporting information



Supporting Figure 1. Gauche fraction as a function of distance along z -axis for hexane-hexadecane, hexane-dodecane, and hexane-octane mixtures at $T = 400$ K and $x_{C_6} = 0.64$. Density distributions are depicted in dashed lines.



Supporting Figure 2. Snapshot of surface silicon and hydrogen atoms for a (001) α -quartz crystal plane terminated with H-groups.