

### Supporting materials

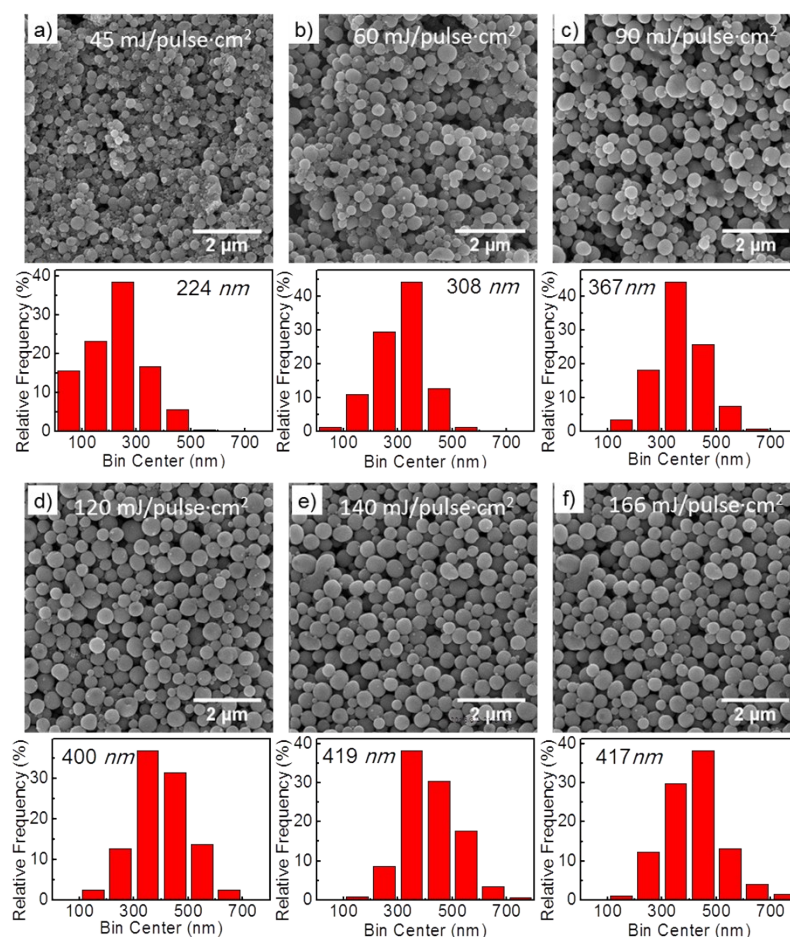


Fig. S1 The morphologies and the size distribution histogram of the spheres  
prepared by 355 nm laser irradiating

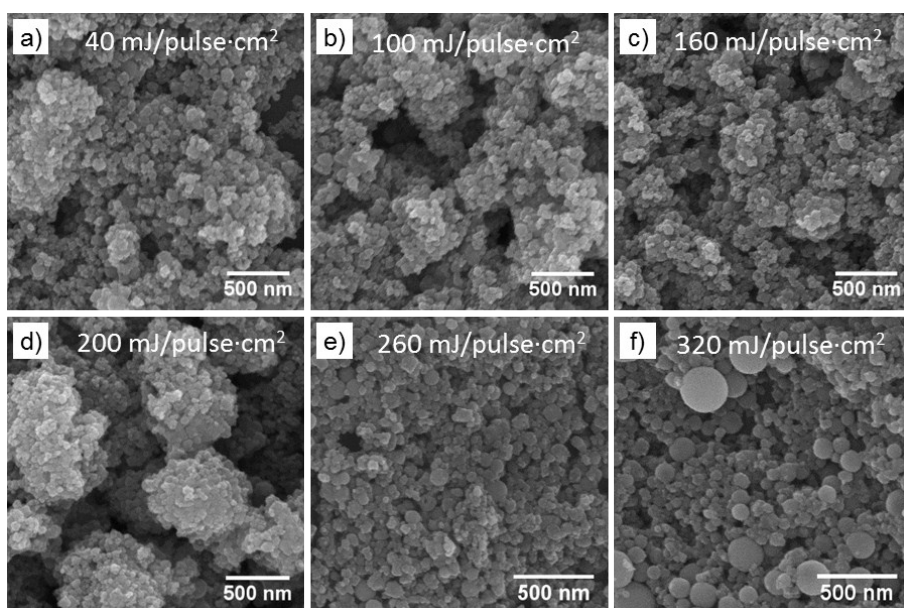


Fig. S2 The morphologies of the products prepared by 532 nm laser irradiating

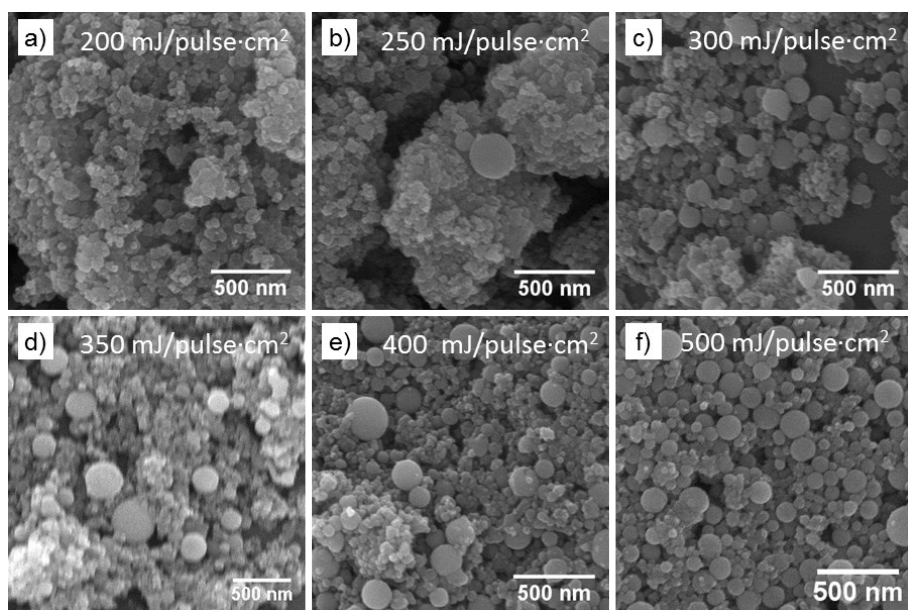


Fig. S3 The morphologies of the products prepared by 1064 nm laser irradiating

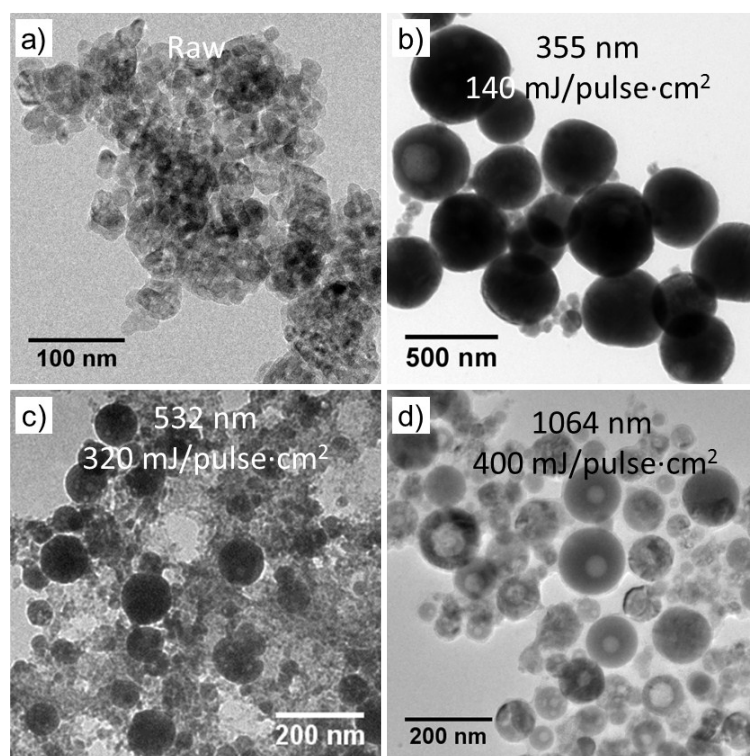


Fig. S4 TEM images of raw anatase TiO<sub>2</sub> (a), and spheres prepared by 355 nm (b), 532 nm (c), and 1064 nm (d) laser, respectively.