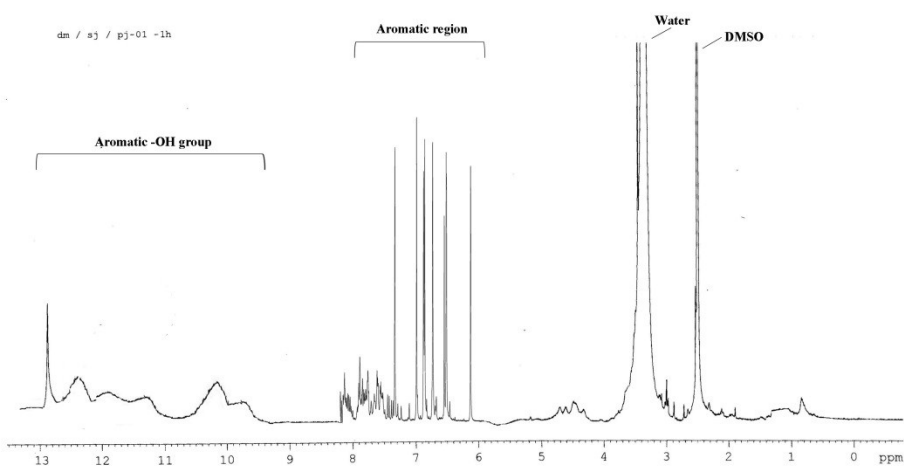
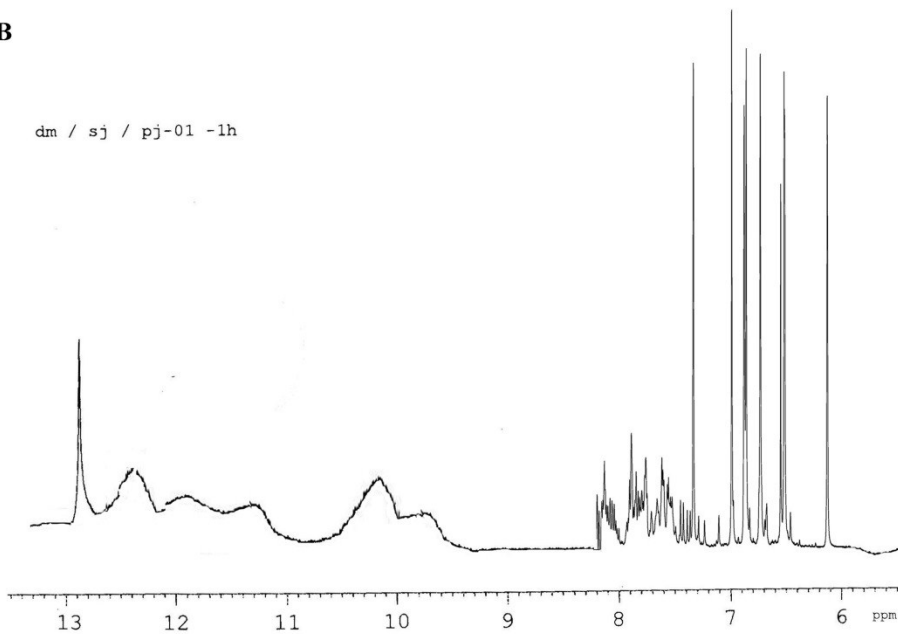


**A**



**B**



**Figure Legend:**

**Supplementary Figure 1:** (A) <sup>1</sup>H NMR spectroscopic data of PJE (B) Extension of the <sup>1</sup>H NMR spectra of PJE in the range of 6 ppm to 13.5 ppm for analysis of aromatic region and aromatic -OH group.

Contour plot of C3 (% inhibition in pyocyanin release) Vs C2, C1

