

Supplementary figures

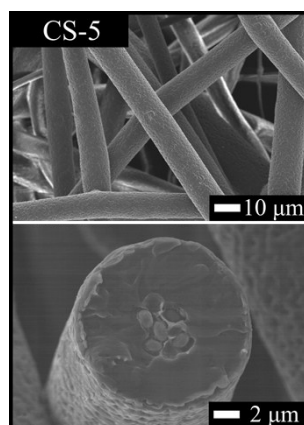


Fig.1. SEM micrographs of fibers and cross-sections morphologies of core-shell fibres with a relative extrusion speed between of the core to the shell of 20.

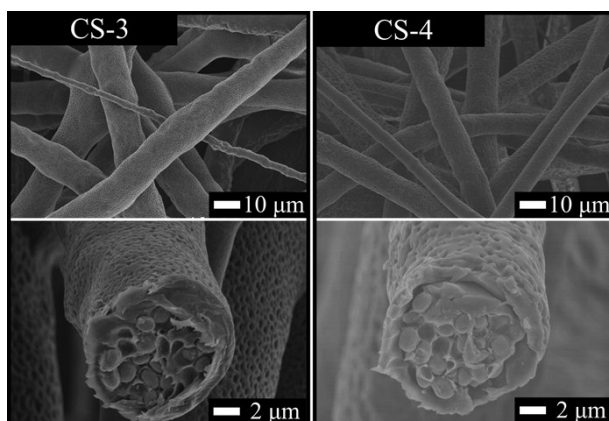


Fig.2. SEM micrographs of fibers and cross-sections morphologies CS-3 and CS-4

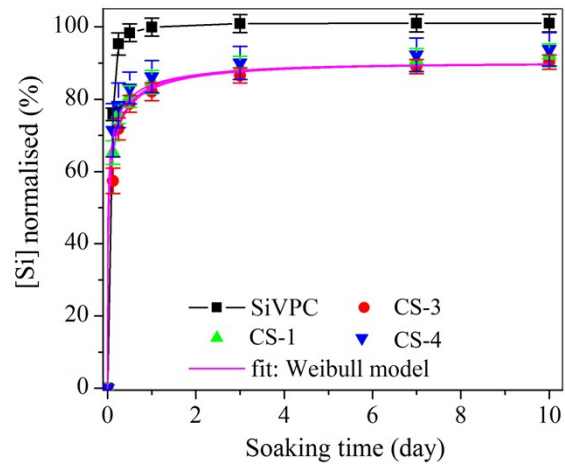


Fig.3. Normalised silicon ions release profiles from core-shell fibres of the same wall-thickness, varying the ratio of lactic to glycolic acid in the PLGA shell layer. The normalised profiles of the core-shell fibres were fitted using Eq. 1