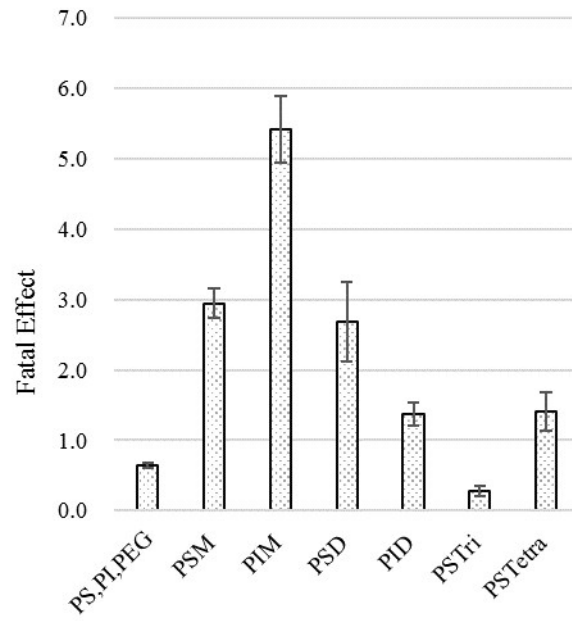
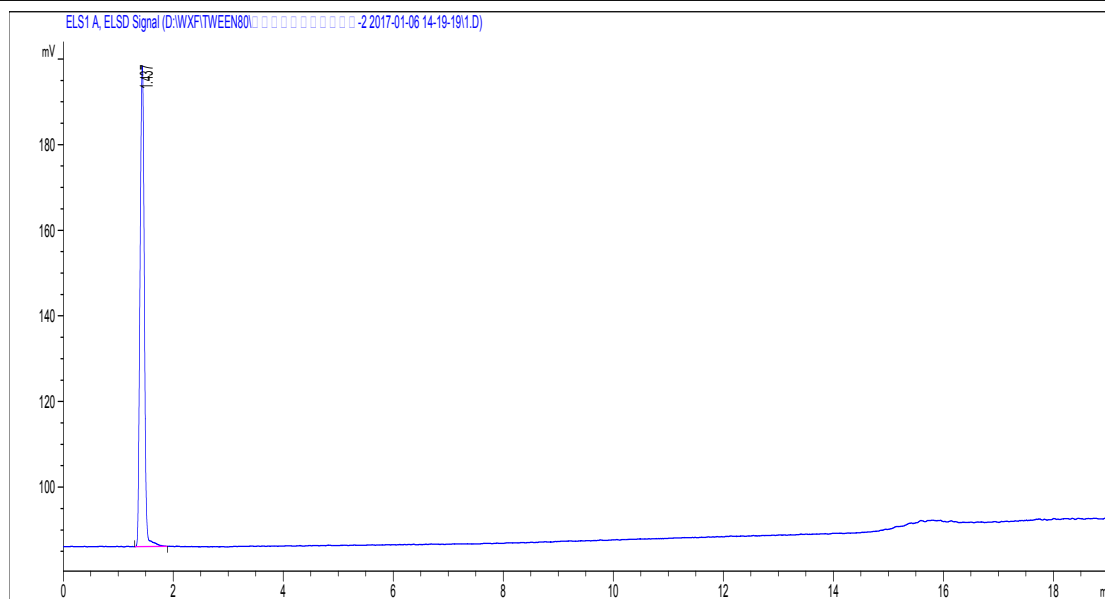


**Fig. S1** Mortality curve of zebrafish subjected to polysorbate 80 (No. 1) at different dosages.



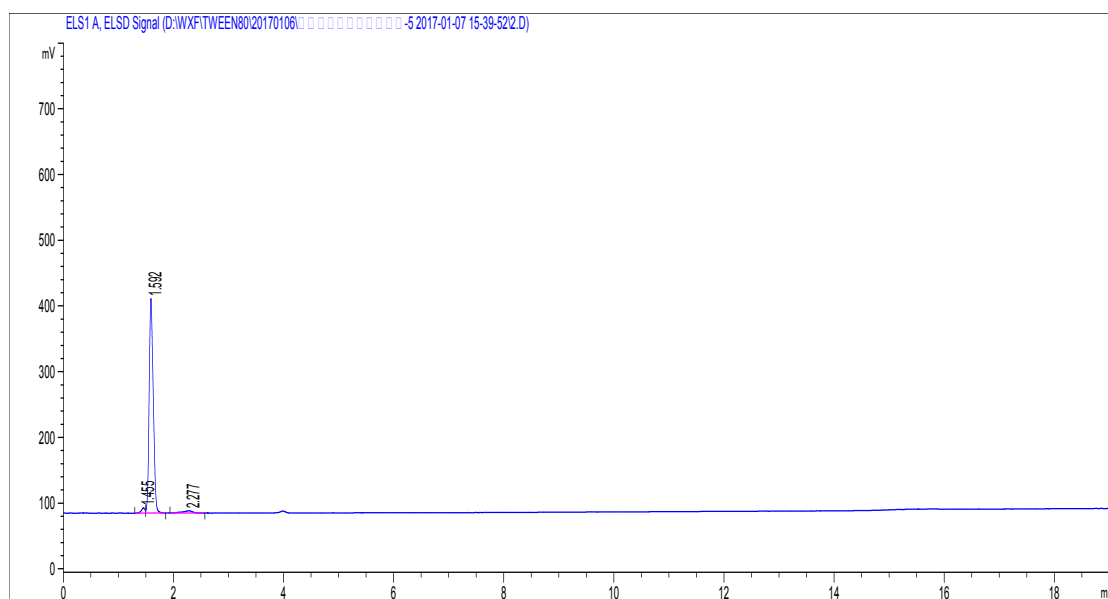
**Fig. S2** Estimated proportion-based fatal effects of major components of polysorbate 80 on zebrafish

A	Time(min)	Peak Area	Peak Area(%)
PEG,PS,PI	1.437	112.2	100.000



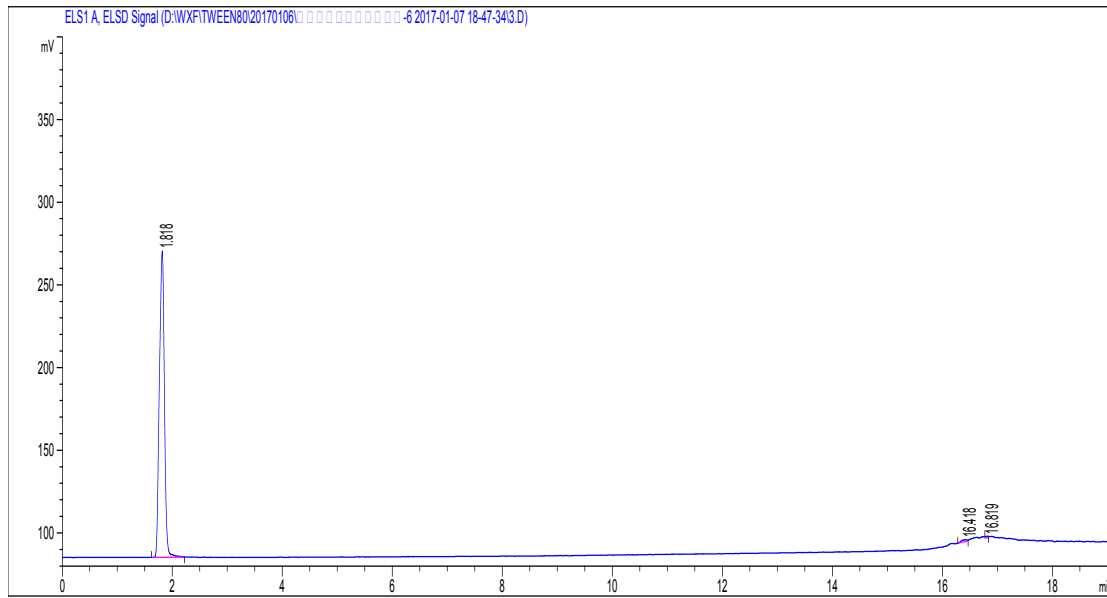
**Fig. S3 Chromatogram of constitute A (PEG, PS and PI) and its purity**

B	Time(min)	Peak Area	Peak Area(%)
PSM	1.592	1688.6	95.284



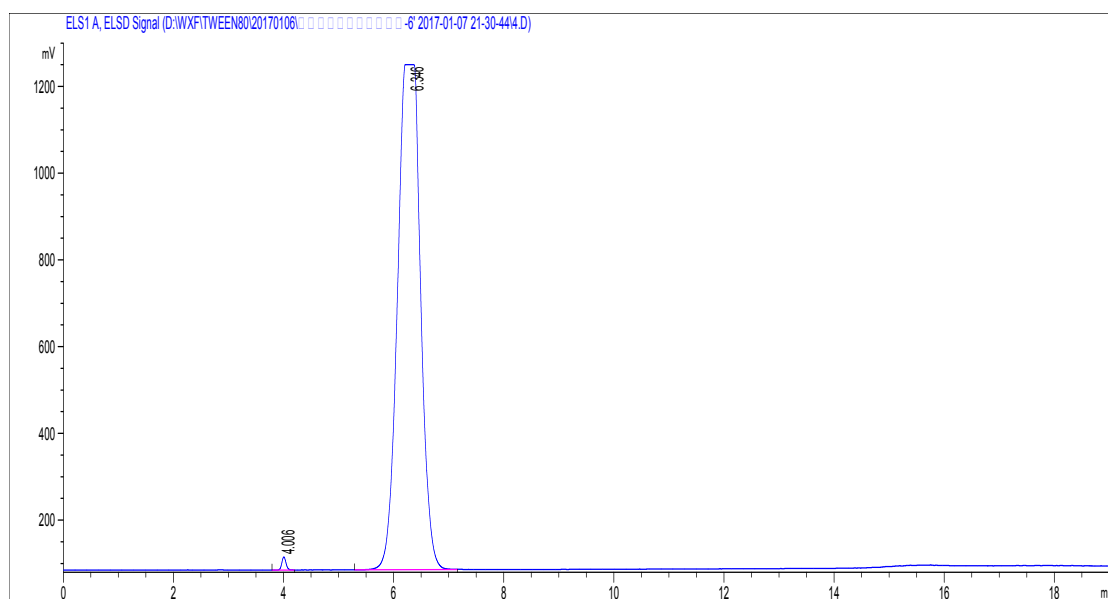
**Fig. S4 Chromatogram of constitute B (PSM) and its purity**

C	Time(min)	Peak Area	Peak Area(%)
PIM	1.816	1182.7	95.354



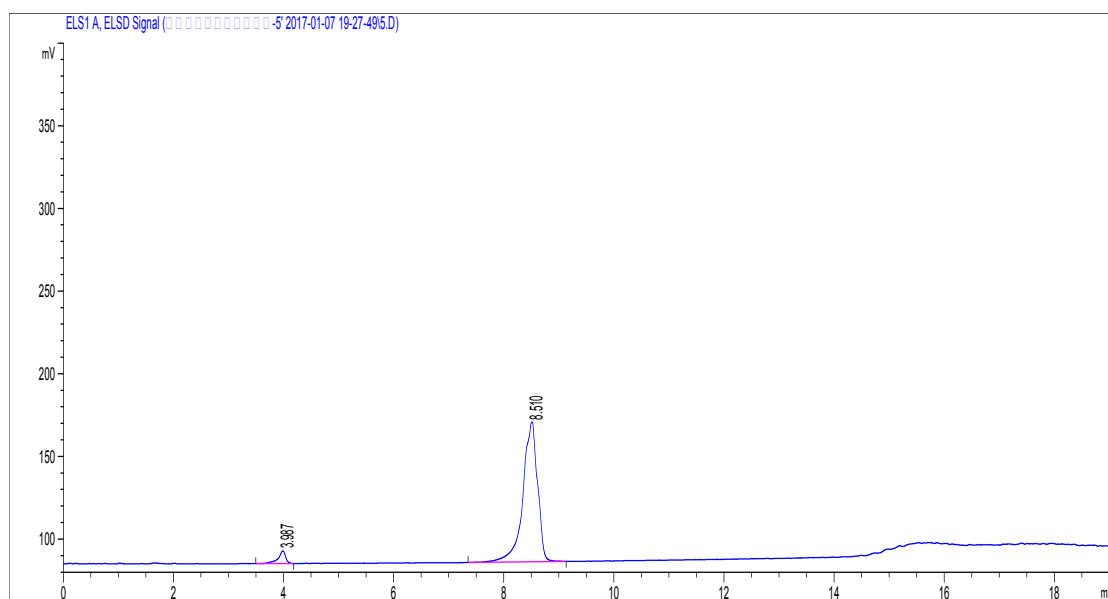
**Fig. S5 Chromatogram of constitute C (PIM) and its purity**

D	Time(min)	Peak Area	Peak Area(%)
PSD	6.346	33597.5	99.532



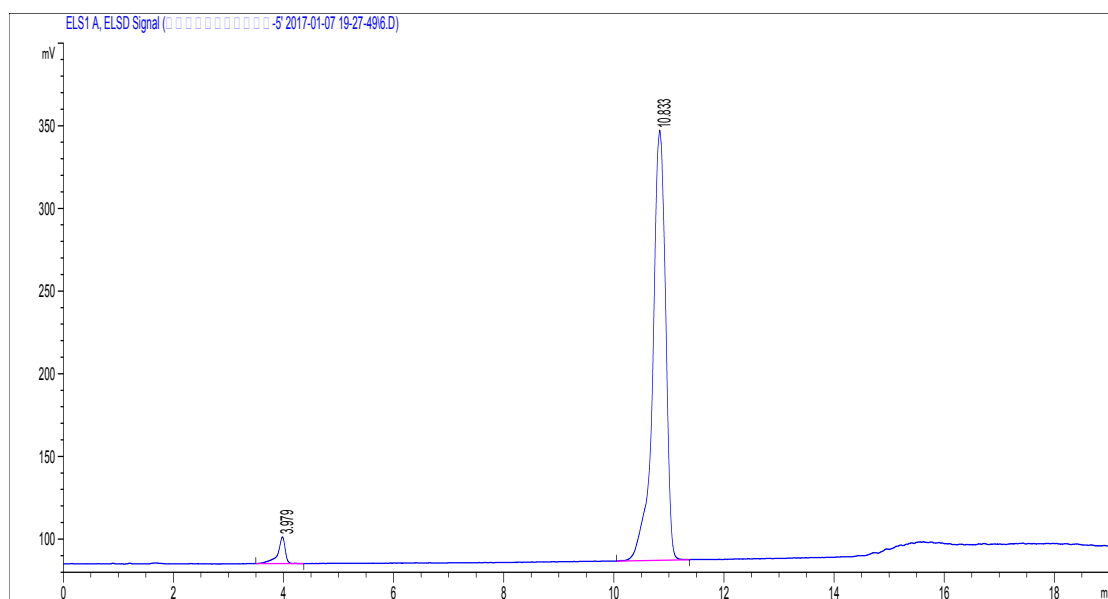
**Fig. S6 Chromatogram of constitute D (PSD) and its purity**

E	Time(min)	Peak Area	Peak Area(%)
PID	8.51	1576.2	95.509



**Fig. S7 Chromatogram of constitute E (PID) and its purity**

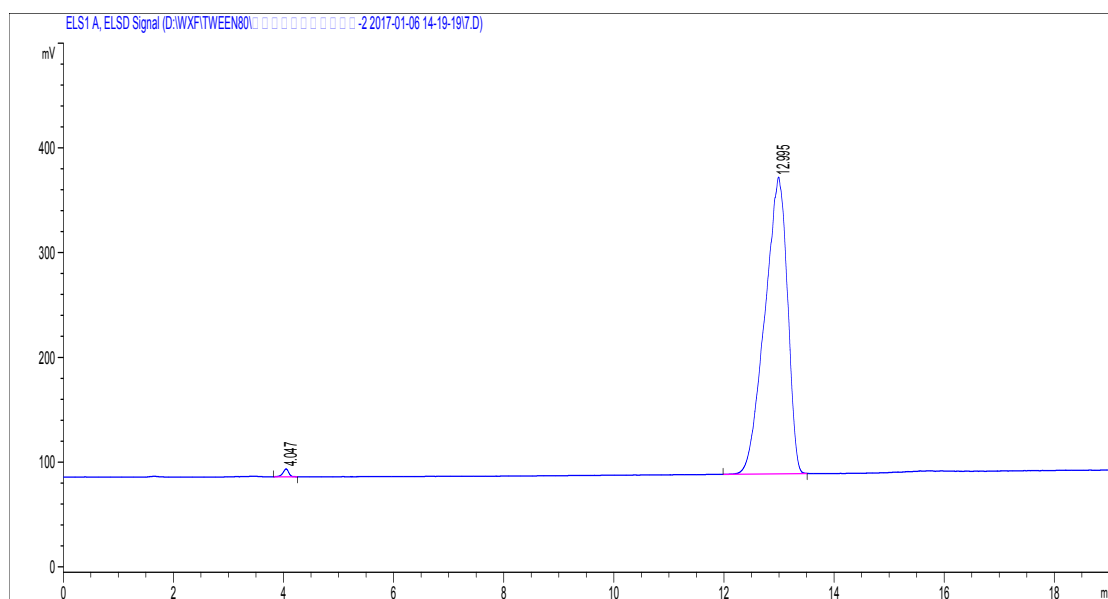
F	Time(min)	Peak Area	Peak Area(%)
PSTri	10.833	4225.4	96.512



**Fig. S8 Chromatogram of constitute F (PSTri) and its purity**



G	Time(min)	Peak Area	Peak Area(%)
PSTetra	12.992	8098.8	99.269



**Fig. S9 Chromatogram of constitute G (PSTetra) and its purity**