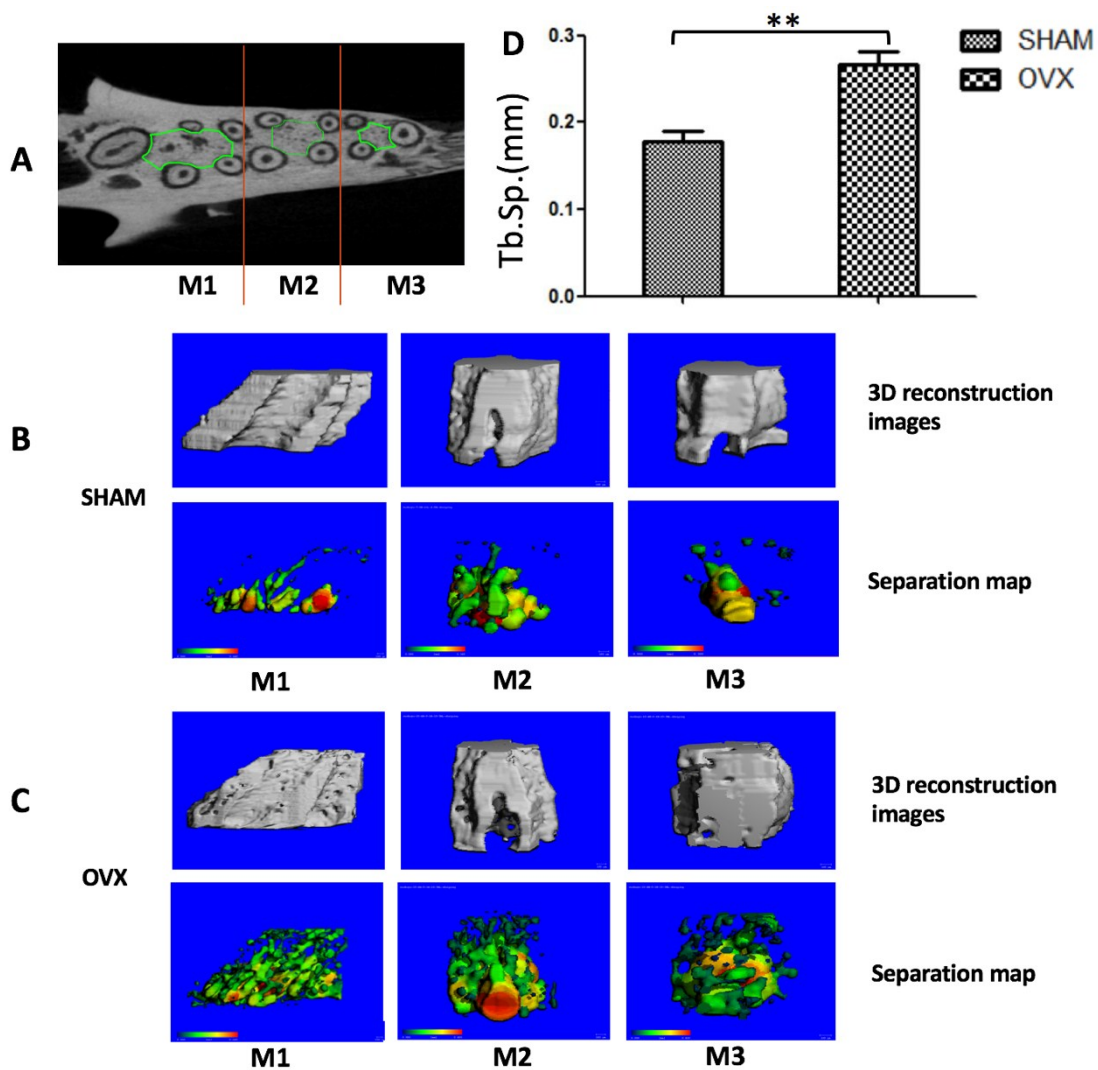


Suppl. Fig. 1 Results from micro-CT analysis and H&E staining of the femurs between the OVX and control groups at 1 month and 4 months. (n = 5), ** p < 0.01.



Suppl. Fig. 2

(A) Micro-CT images represented two-dimensional images of maxillary bone, regions of interest (ROI) were indicated by green lines on horizontal surface which was parallel to the occlusion plane (M1, M2, and M3, the maxillary three molars). (B, C) The 3D reconstruction images and the separation map generated after segmentation of teeth. (D) Micro-tomographic histomorphometric comparisons between the sham and OVX groups (the mean value of three molars in each group). Values are mean±S.D. Significant differences between the two groups were marked with asterisks (*P < 0.05; **P < 0.01).