

Supplementary Tables and Figures

**Quantitative investigation of human cell surface N-glycoprotein
dynamics**

Haopeng Xiao, and Ronghu Wu*

School of Chemistry and Biochemistry and the Petit Institute for Bioengineering and Bioscience,
Georgia Institute of Technology, Atlanta, Georgia 30332, USA

* Corresponding author: Phone: 404-385-1515; Fax: 404-894-7452.
E-mail: ronghu.wu@chemistry.gatech.edu

The following Supplementary Tables are in Excel format:

Table S1 - Unique N-Glycosylation Sites (449 Sites) Identified on 233 Surface Glycoproteins in Expt# 1

Table S2 - Unique N-Glycosylation Sites (475 Sites) Identified on 239 Surface Glycoproteins in Expt# 2

Table S3 - The Half-Lives of 311 Unique Glycosylation Sites in Expt# 1

Table S4 - The Half-Lives of 318 Unique Glycosylation Sites in Expt# 2

Table S5 - The Half-Lives of 220 Quantified Cell-Surface N-Glycoproteins in Expt# 1

Table S6 - The Half-Lives of 216 Quantified Cell-Surface N-Glycoproteins in Expt# 2

Table S7 - Unique N-Glycosylation Sites (545 Sites) Identified on 265 Surface Glycoproteins

Table S8 - The Half-Lives of 386 Unique Glycosylation Sites in

Table S9 - The Half-Lives of 248 Quantified Cell-Surface N-Glycoproteins

Table S10 - The Half-Lives of Quantified CDs

Table S11 - The Half-Lives of 29 Quantified Cell-Surface N-Glycoproteins with Catalytic Activities

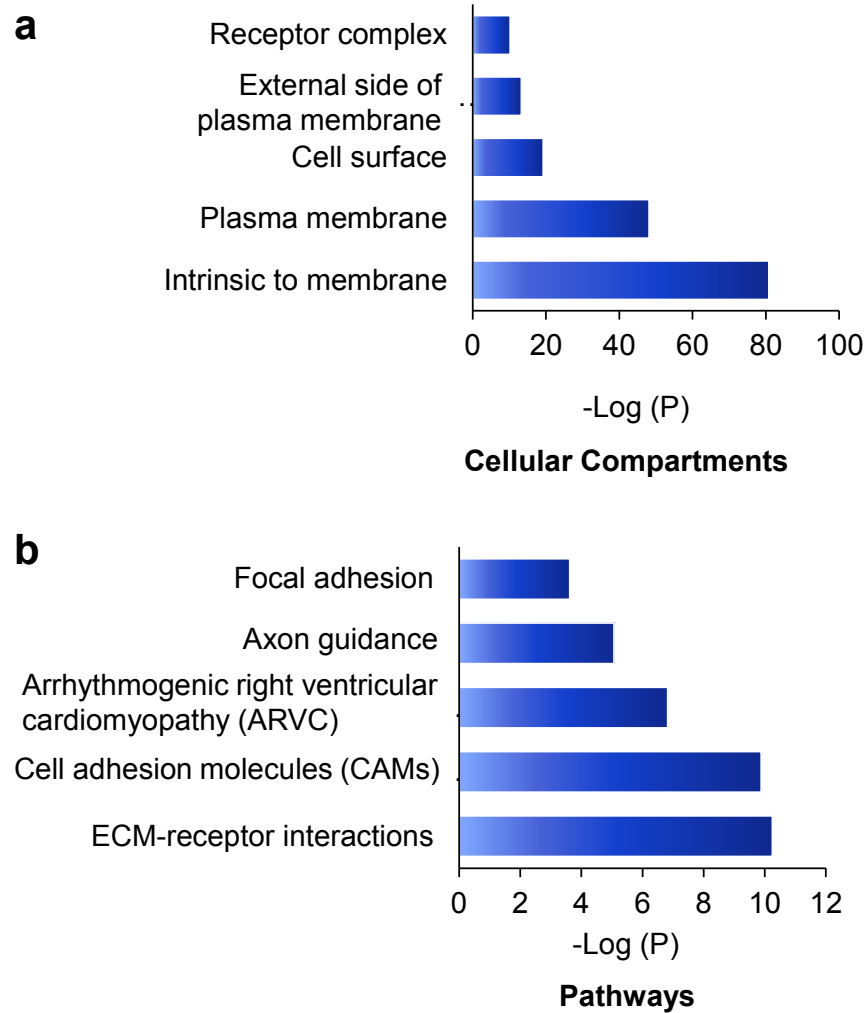


Fig. S1 Clustering of surface glycoproteins identified in this work. (a) Cellular compartments, and (b) pathways.

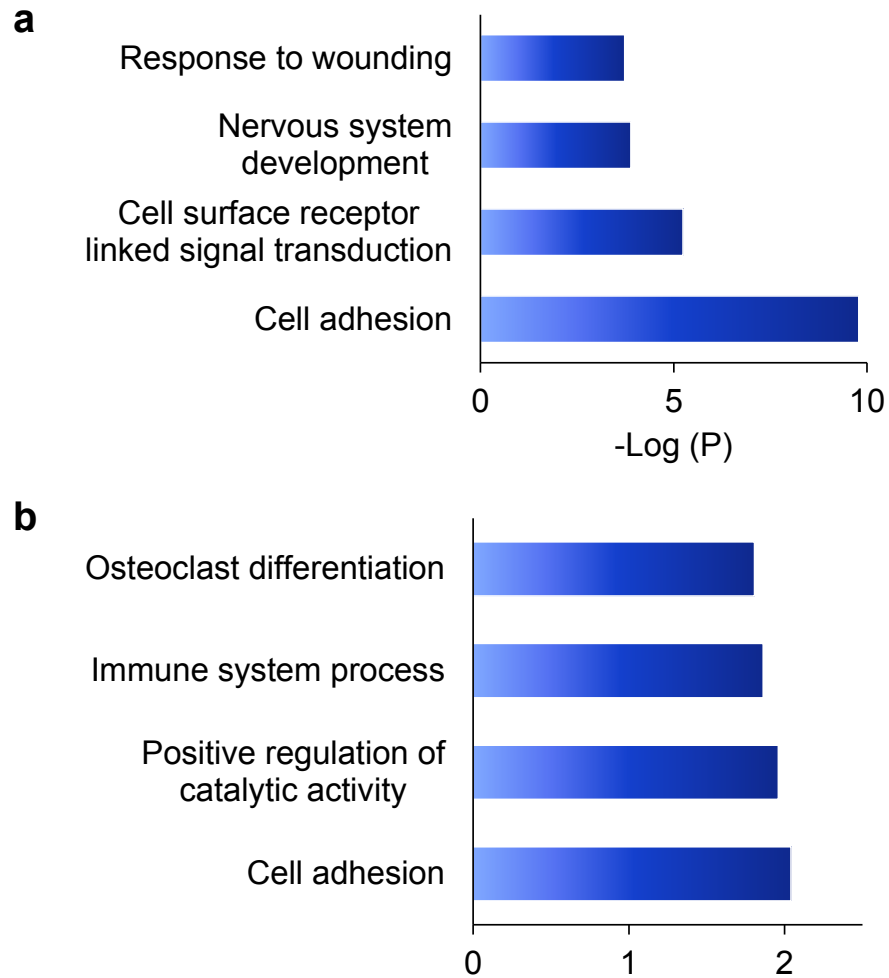


Fig. S2 (a) Biological processes of relatively short-lived glycoproteins (half-life <10 h). (b) Biological processes of relatively long-lived glycoproteins (half-life >100 h).