

Supplemental movie and figures

Movie S1: Movie of the condensing water drops on a prism-patterned lubricant infused surface

S_{III} .

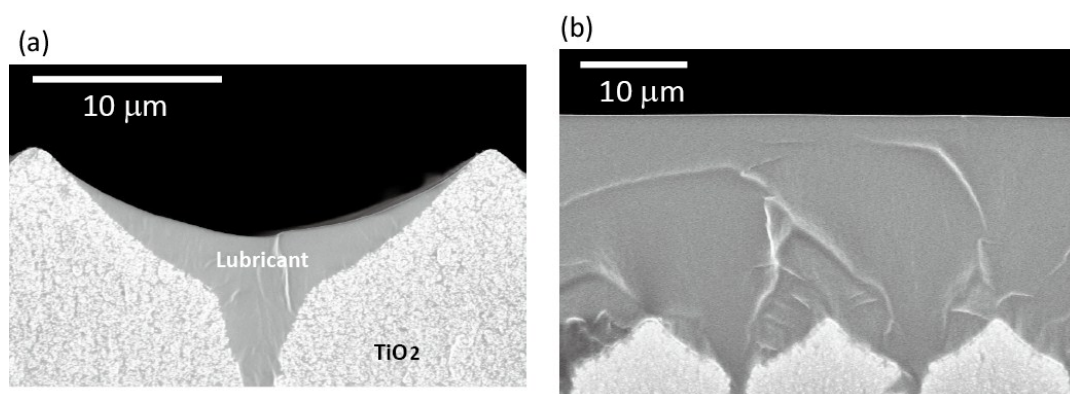


Fig. S2: SEM image of TiO₂ surfaces infused with silicone oil as lubricant. (a) Plot of the thickness of lubricant layer. The lubricant is too thin to cover the top of the prism structure. (b) S_V : Blade coated with 50 μm spacers. The prism structure is totally covered by a thick layer of the lubricant.

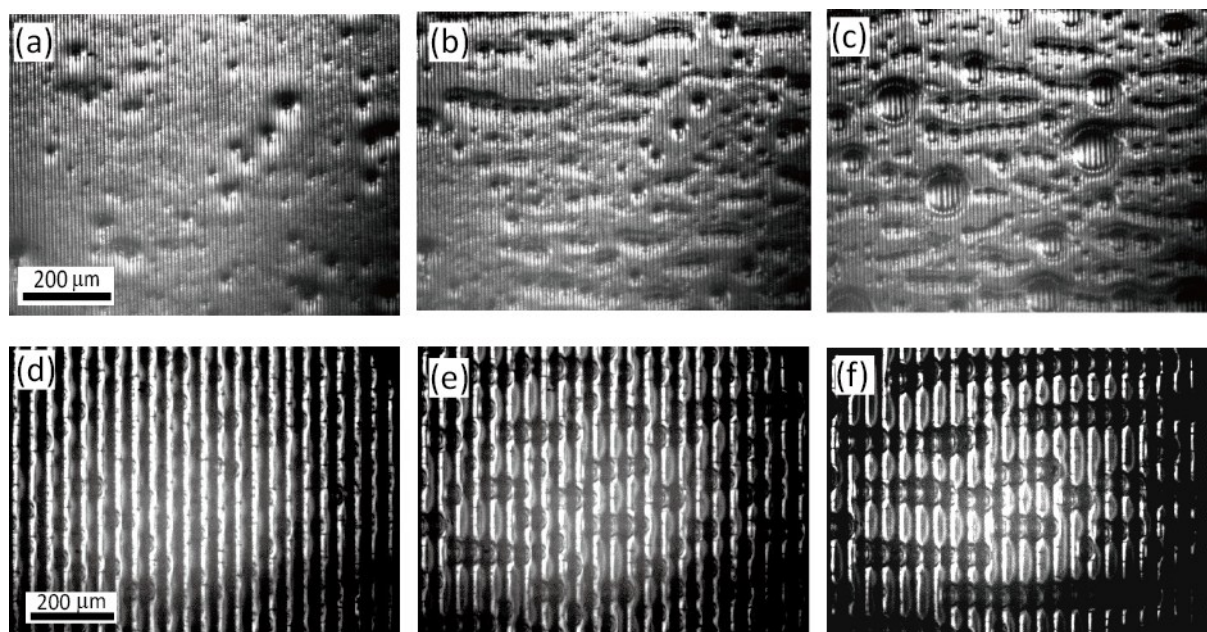


Fig. S3: Condensed drops on lubricant-infused prism arrays with different peak-to-peak distances: (a)-(c) 10 μm and (d) – (f) 50 μm . The silicone oil was spin-coated at 5000 rpm on both surfaces. Images were acquired after (a) 40 s, (b) 80 s, (c) 120 s and (d) 100 s, (e) 250 s (c) 400 s.