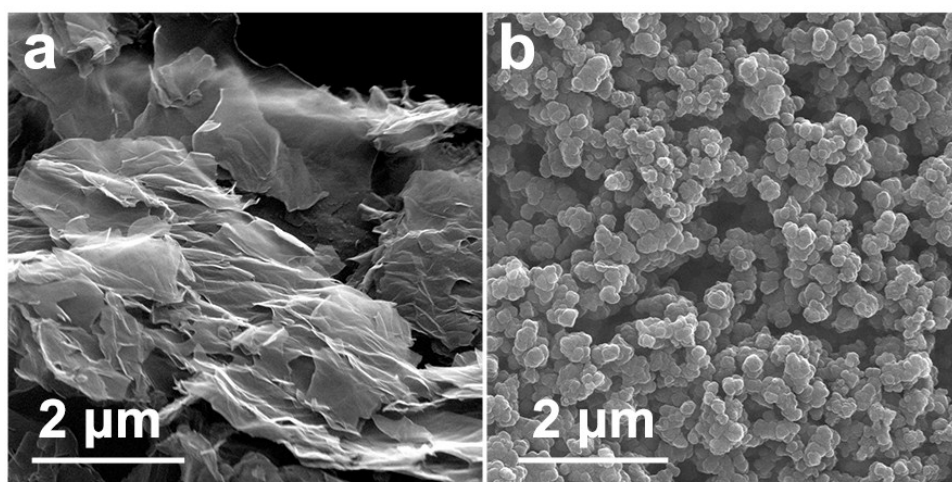


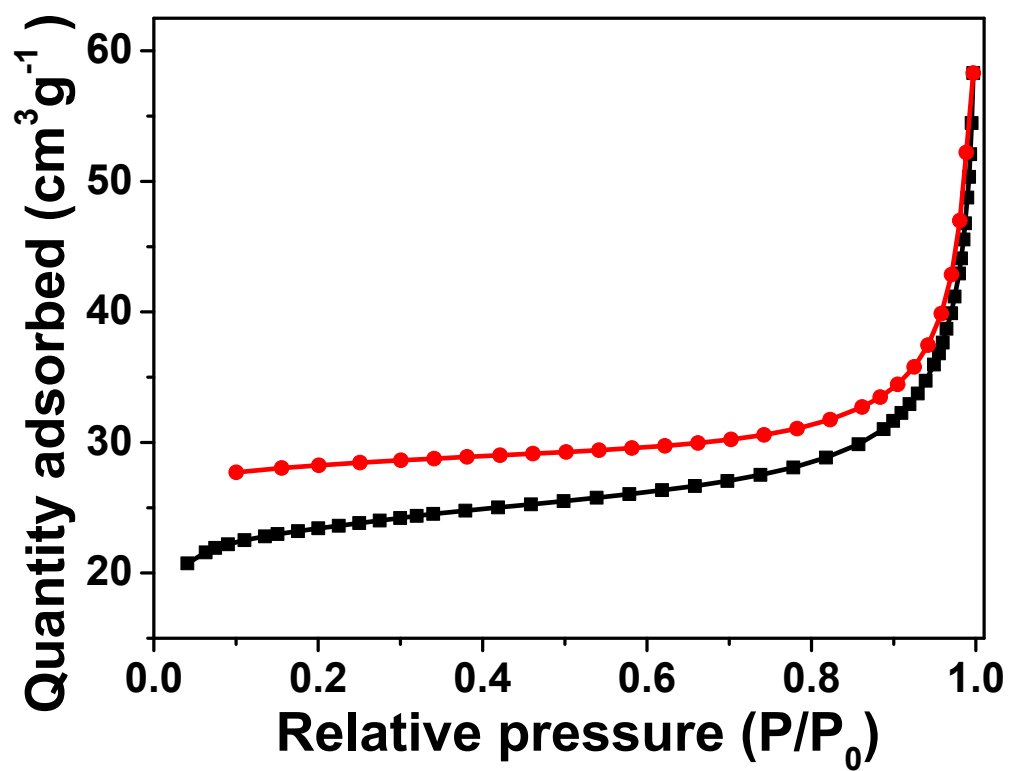
## Electronic Supplementary Information

### Graphene-based Nitrogen-doped Carbon Sandwich Nanosheets: New Capacitive Process Controlled Anode Material for High-performance Sodium-ion Batteries

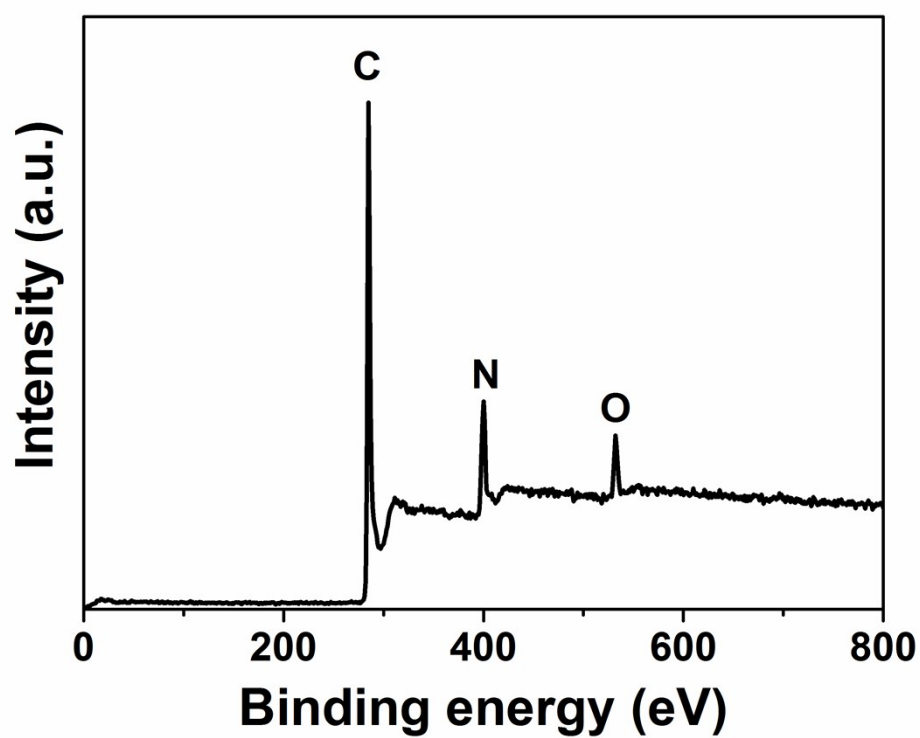
Dongdong Li<sup>† a,b</sup>, Lei Zhang<sup>† a,b</sup>, Hongbin Chen<sup>a</sup>, Jun Wang<sup>a</sup>, Liang-xin Ding<sup>\*,a</sup>, Suqing Wang<sup>a</sup>,  
Peter J. Ashman<sup>b</sup>, and Haihui Wang<sup>\*,a,b</sup>



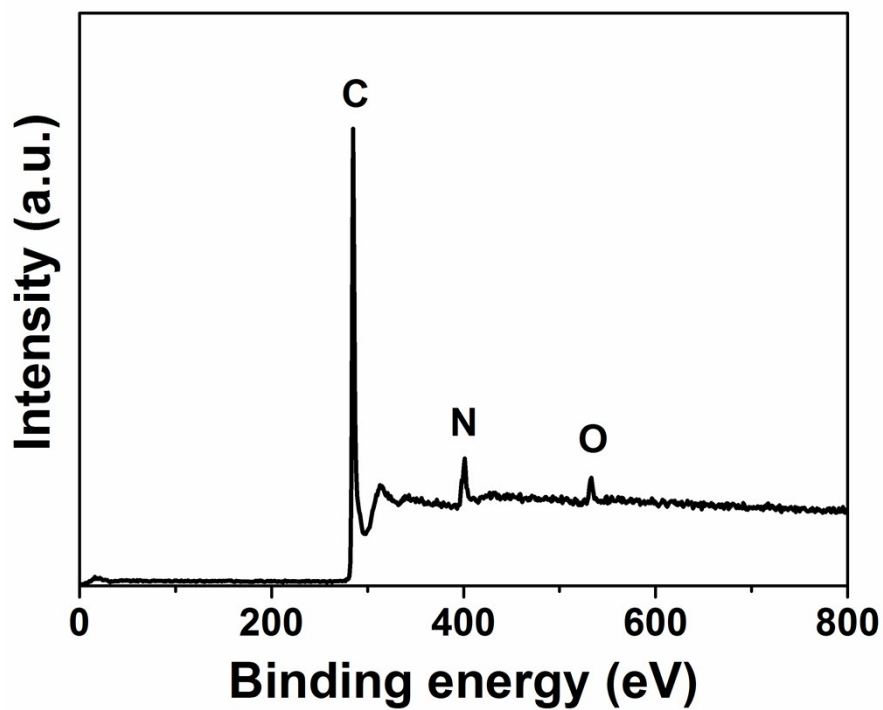
**Fig. S1** SEM images of G (a) and NC (b).



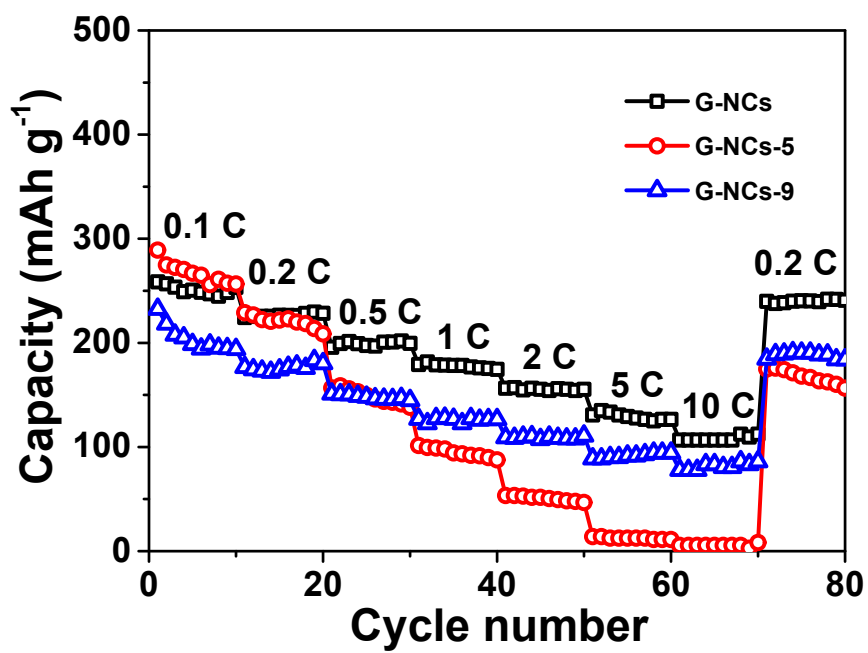
**Fig. S2** N<sub>2</sub> adsorption-desorption isotherms of NC.



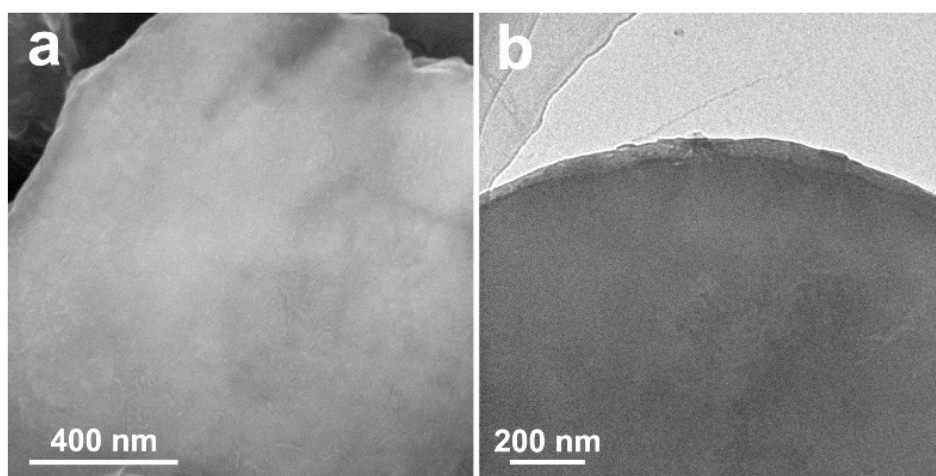
**Fig. S3** XPS survey spectrum of G-NCs-5.



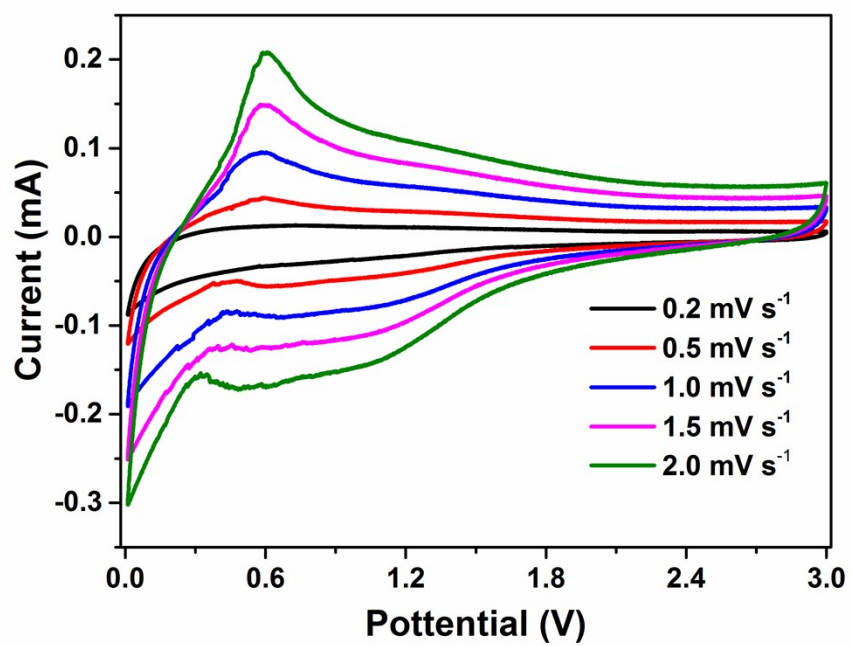
**Fig. S4** XPS survey spectrum of G-NCs-9.



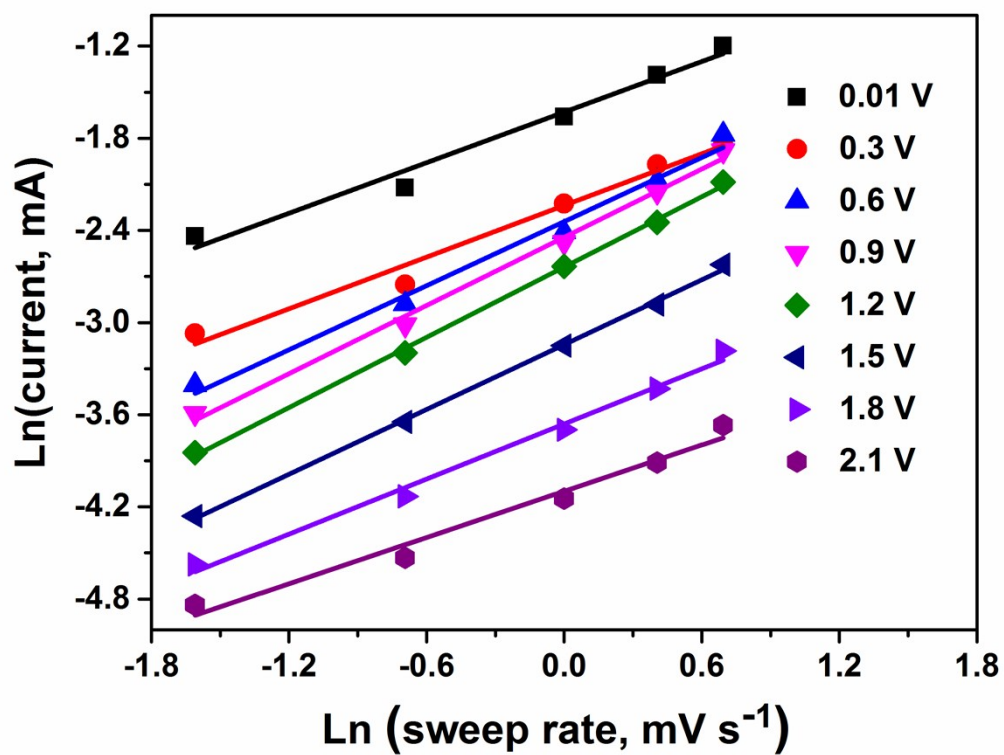
**Fig. S5** Rate capability of G-NCs, G-NCs-5 and G-NCs-9 between 0.01 and 3 V.



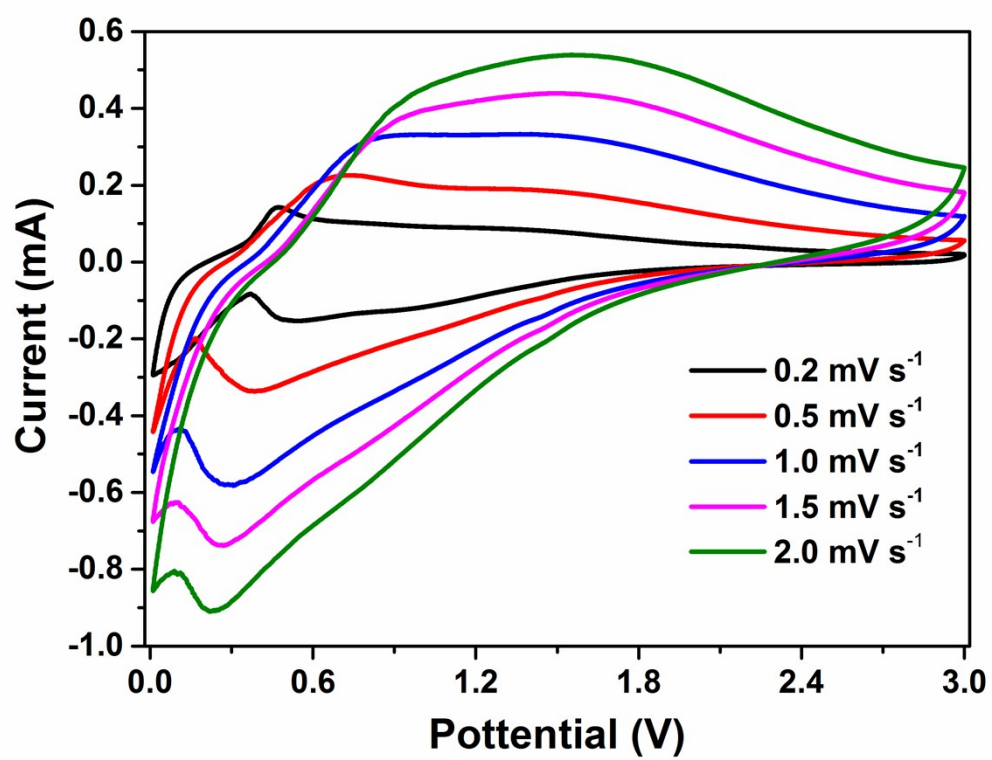
**Fig. S6** SEM (a) and TEM (b) images of G-NCs electrode after 50 cycles.



**Fig. S7** CV curves of G electrode at different sweep rates.

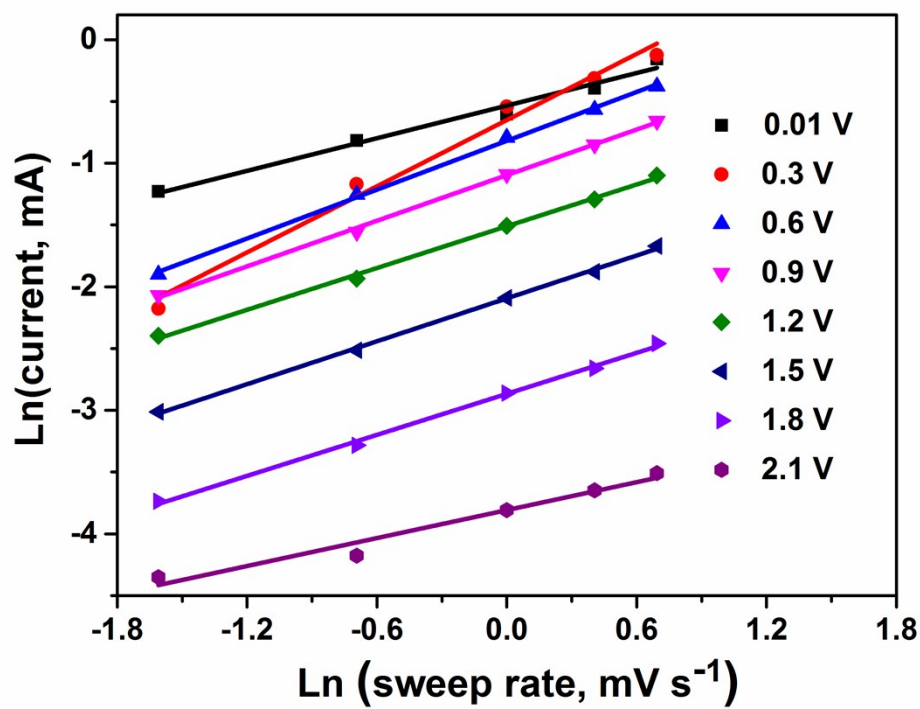


**Fig. S8** Linear relationships between logarithm currents  $\text{Ln}(i)$  and logarithm sweep rate  $\text{Ln}(v)$  of G CV curves.



**Fig. S9** CV curves of NC electrode at different sweep rates.





**Fig. S10** Linear relationships between logarithm currents  $\text{Ln}(i)$  and logarithm sweep rate  $\text{Ln}(v)$  of NC CV curves.