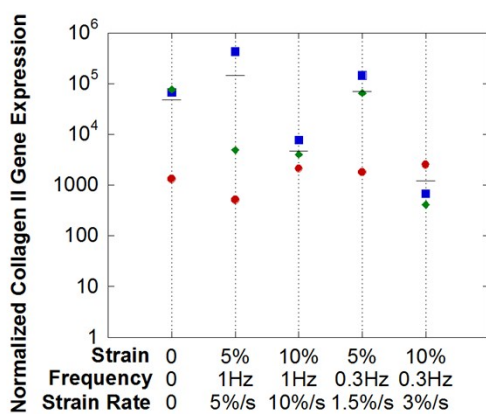
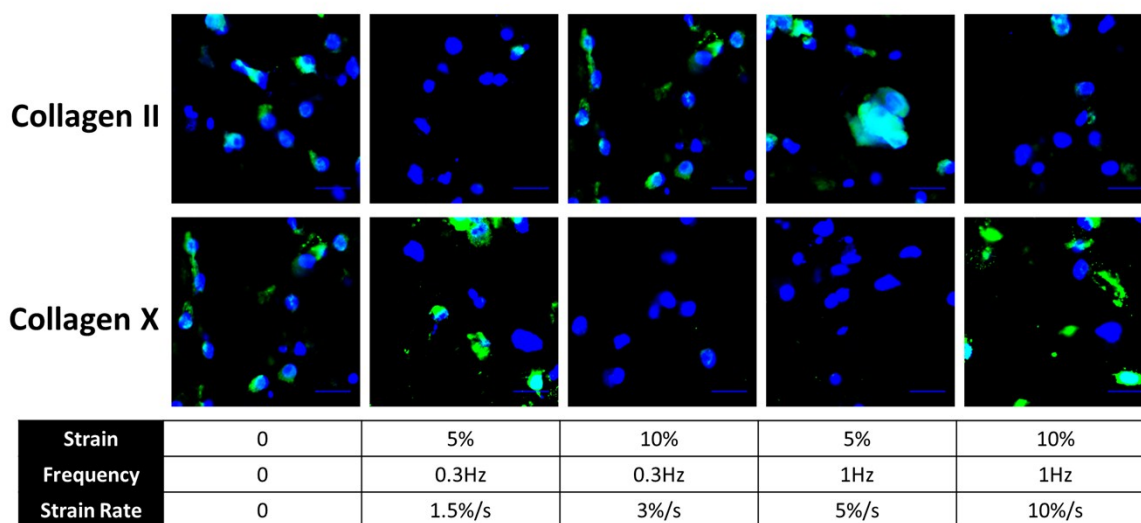
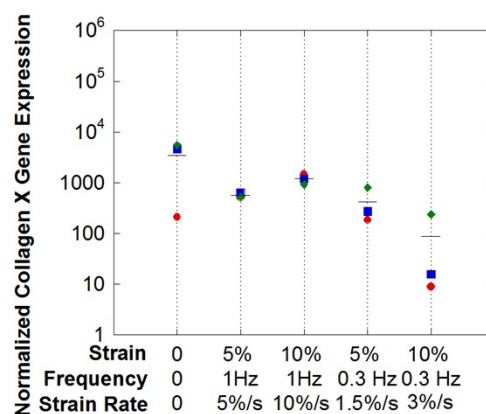


A.



B.



**Supplemental Figure 2.** The effects of dynamic compressive loading on hMSC chondrogenesis and hypertrophy in a biomimetic PEG-based hydrogel containing 0.1 mM RGD and 1 wt% ChS after 14 days of culture. Gene expression (by qPCR) for A) collagen II and B) collagen X. Normalized expression is defined as relative expression at day 21 normalized to relative expression for pre-encapsulated hMSCs. C) Immunohistochemistry staining for collagen II (green) (top row) and for collagen X (green) (bottom row). Cell nuclei (blue) were counterstained with Dapi. Scale bar = 20µm. In A and B, the symbols (diamond (Donor 1), square (Donor 2), circle (Donor 3)) represent the mean for each donor (n=4 technical replicates). The line (—) represents the mean for all donors (n=3).