

Title: Potential of muga silkworm *Antheraea assamensis* silk fibroin/chondrocyte constructs for cartilage tissue engineering.

Authors: Nandana Bhardwaj^{1*}, Yogendra Pratap Singh², Dipali Devi¹, Raghuram Kandimalla³, Jibon Kotoky³, Biman B. Mandal²

1. Histological and immunohistochemical staining of non-seeded scaffolds

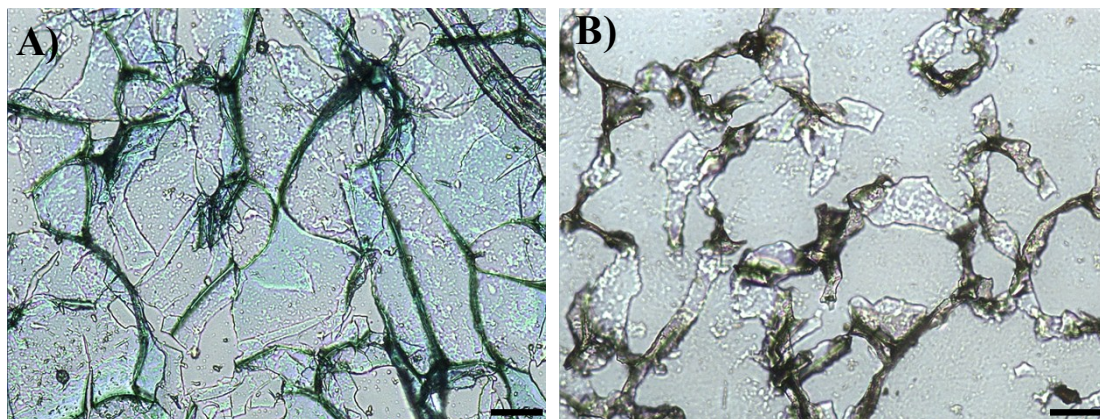


Fig. S1. Alcian blue histological staining (A) and immunohistochemical staining (B) of non-seeded scaffolds after 2 weeks. Scale bar represents 50 μm .