

Electronic Supplementary Information (ESI)

Well-Defined ϵ -Labile Diselenide-Centered Poly(ϵ - caprolactone)-based micelles for Activated Intracellular Drug Release

Chao Wei,^a Yan Zhang,^{a,*} Heng Xu,^c Ying Xu,^a Yue Xu^a and Meidong Lang^{a,b,*}

^a *Key Laboratory for Ultrafine Materials of Ministry of Education, School of Materials and Science and Engineering, East China University of Science and Technology. Shanghai, 200237, China*

^b *Shanghai Collaborative Innovation Center for Biomanufacturing, 130 Meilong Road, Shanghai 200237, China*

^c *Collaborative Innovation Center for Petrochemical New Materials, Anqing, Anhui 246011, China*

* *E-mail: zhang_yan@ecust.edu.cn; Tel: +86-21-65243432;*

* *E-mail: mdlang@ecust.edu.cn; Tel: +86-21-65243916;*

Supplementary figures:

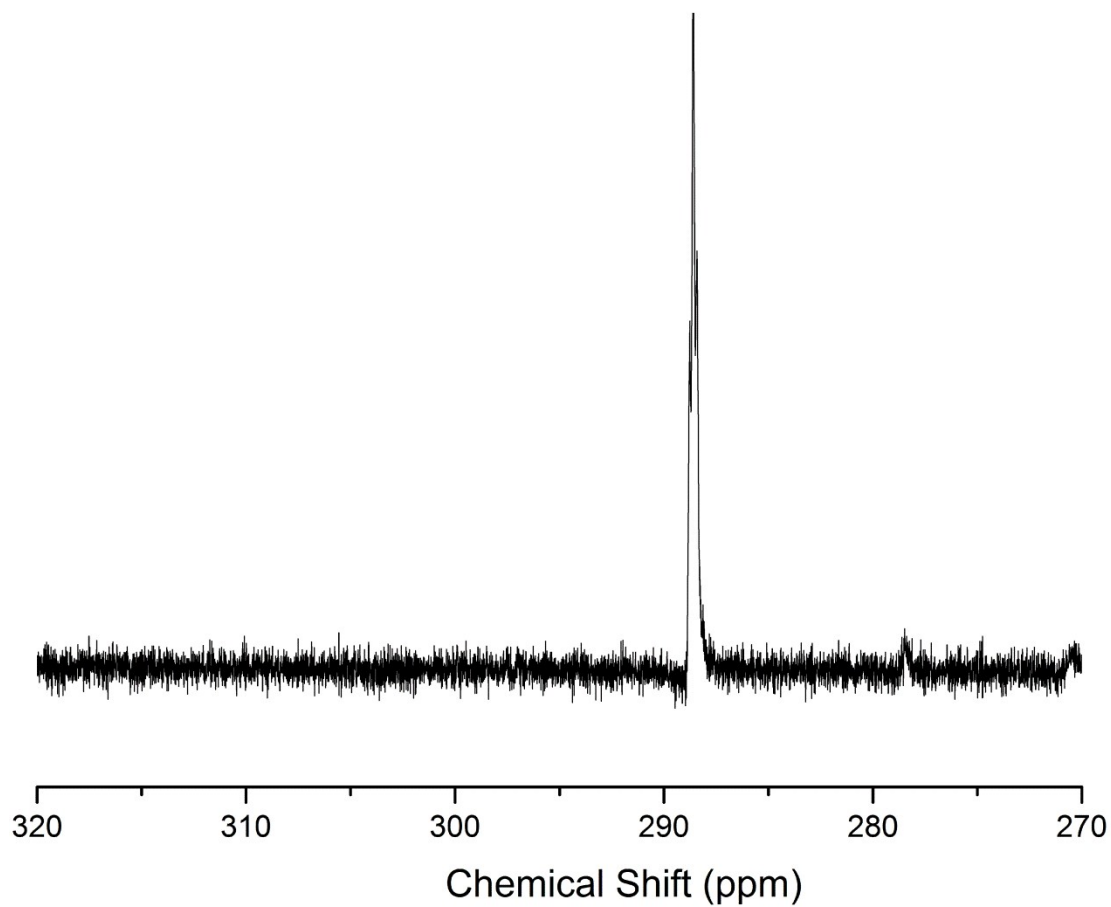


Figure S1. ^{77}Se NMR spectra of $(\text{mPEG-PCL-Se})_2$.

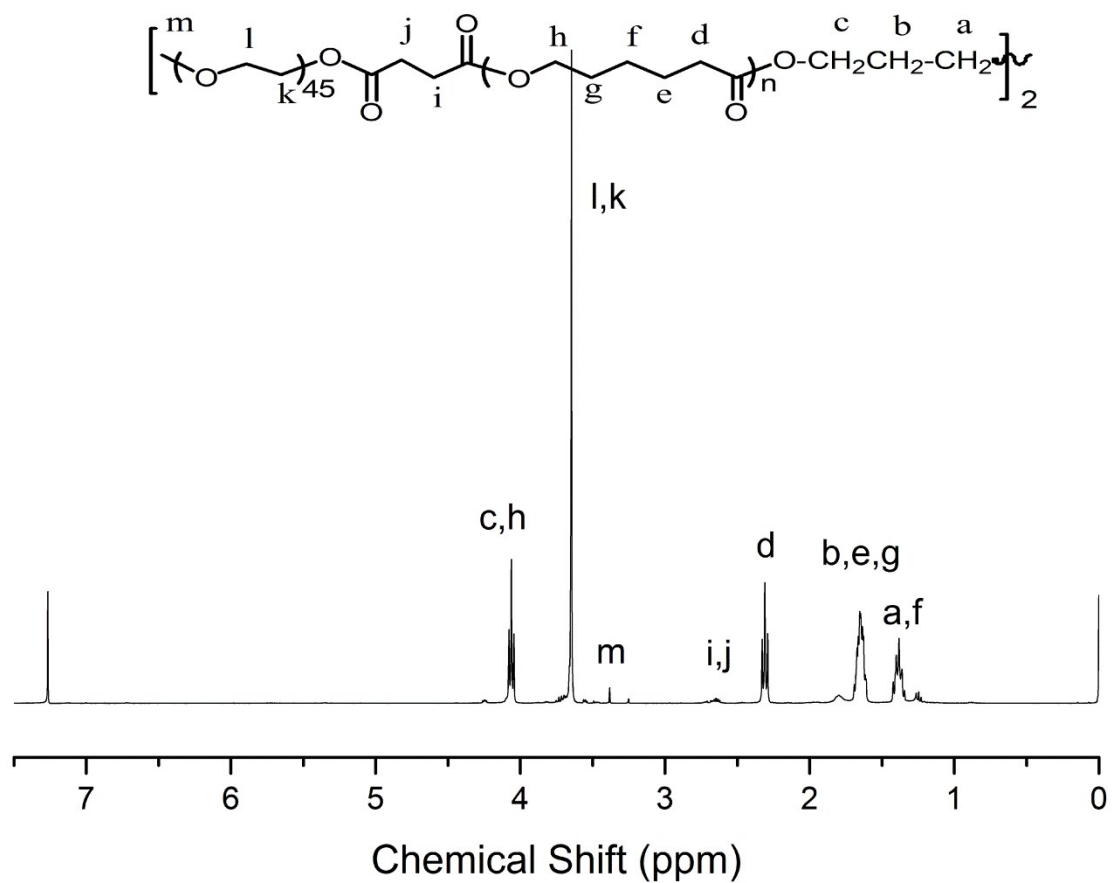


Figure S2. $^1\text{H NMR}$ spectra of $(m\text{PEG-PCL-C})_2$.

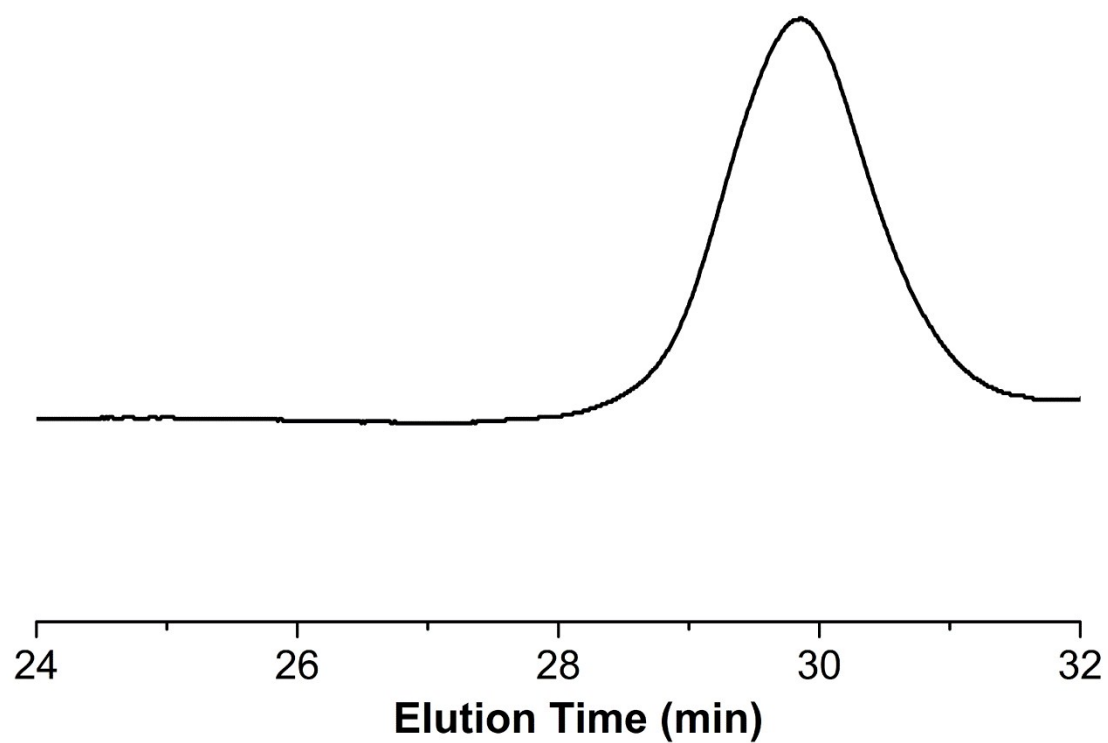


Figure S3. GPC spectra of $(m\text{PEG-PCL-C})_2$.