

Electronic Supplementary Information

Polypyrrole-Coated Poly(l-lactic acid-co- ϵ -caprolactone)/Silk Fibroin Nanofibrous Membranes Promoting Neural Cells Proliferation and Differentiation with Electrical Stimulation

Binbin Sun ^{a,#}, Tong Wu ^{a,#}, Juan Wang ^a, Dawei Li ^a, Jing Wang ^a, Qiang Gao ^a, M.

Aqeel Bhutto ^a, Hany El-Hamshary ^{b,c}, Salem S. Al-Deyab ^c, Xiumei Mo ^{a,*}

^a State Key Lab for Modification of Chemical Fibers and Polymer Materials, College of Chemistry, Chemical Engineering and Biotechnology, Donghua University, Shanghai, 201620, People's Republic of China

^b Department of Chemistry, College of Science, King Saud University, Riyadh 11451, Kingdom of Saudi Arabia

^c Departments of Chemistry, Faculty of Science, Tanta University, Tanta 31527, Egypt

Binbin Sun and Tong Wu contributed equally to this work.

* Corresponding author at: College of Chemistry, Chemical Engineering and Biotechnology, Donghua University, 2999 North Renmin Road, Shanghai 201620, P. R. China.

E-mail address: xmm@dhu.edu.cn (Xiumei Mo)

Table S1. Sequence of primers used for RT-PCR.

Gene	Forward primer	Reverse primer
GAPDH	5'-TGGCGCTGAGTACGTCGTG-3'	5'-ATGGCATGGACTGTGGTCAT-3'
β -Tubulin III	5'-TGGCACCCAGCACAATGAA-3'	5'-CTAAGTCATAGTCCGCCTAGAAGCA-3'
GAP43	5'-AGAAAGCAGCCAAGCTGAGGAGG-3'	5'-CAGGAGAGACAGGGTTCAGGTGG-3'
synapsin I	5'-CAGGGTCAAGGCCCCAGTC-3'	5'-CACATCCTGGCTGGGTTTCTG-3'

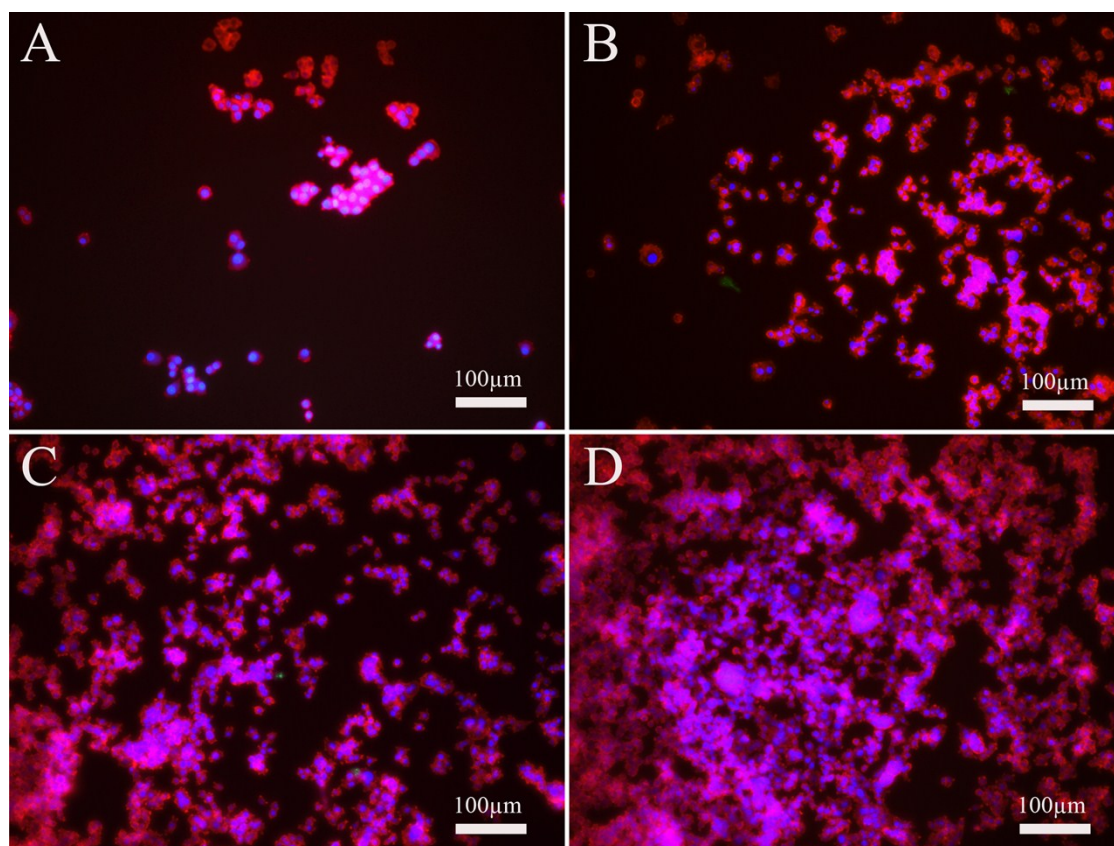


Fig.S1 Immunofluorescence images of PC12 cells cultured on (A) PLCL/SF, (B) PLCL/SF-Ppy-1, (C) PLCL/SF-Ppy-2 and (D) PLCL/SF-Ppy-3 without ES.

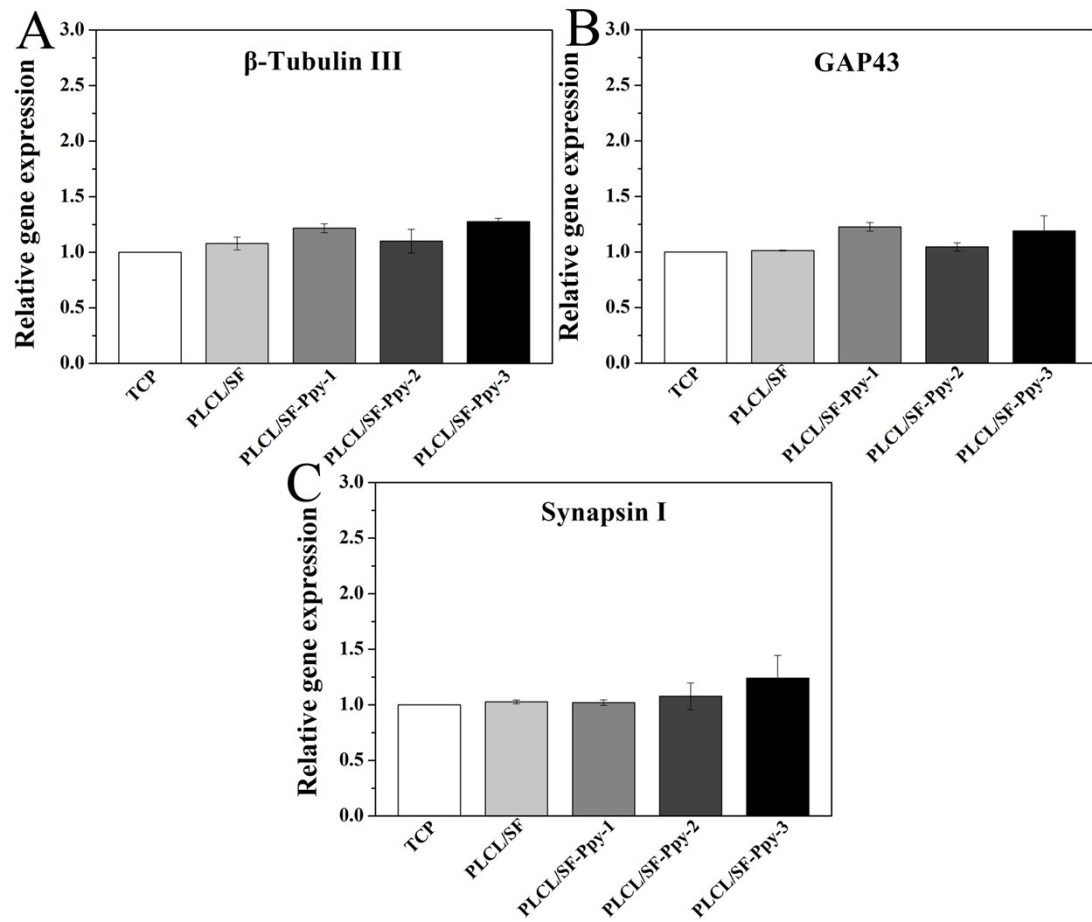


Fig.S2 Comparison of the expression of (A) β -Tubulin III, (B) GAP43 and (C) Synapsin I gene in PC12 cells cultured on different samples in the absence of ES.