

## Supplementary Material

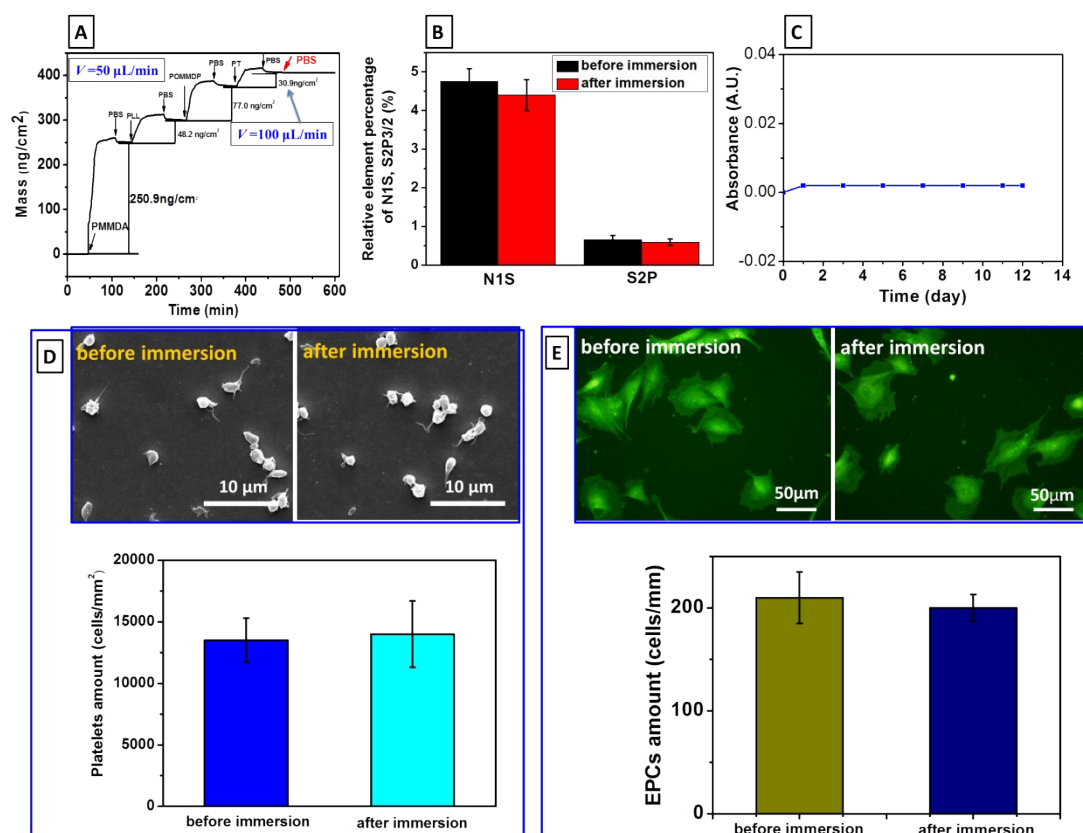


Figure S1 Characterization of the coating stability (A) QCM-D; (B) relative elemental percentage of N<sub>1s</sub>, S<sub>2p3/2</sub> determined by XPS analysis; (C) UV absorption of the soaking solution; (D) SEM images and the amount of platelet adhesion 1 h; (E) Immunofluorescence images and the amount of EPCs culture 1 day.