

Supporting information

Composite scaffolds of gelatin and gold nanoparticles with tunable size and shape for photothermal cancer therapy

Jing Zhang,^{a,b} Jingchao Li,^{a,b} Naoki Kawazoe^a and Guoping Chen^{*a,b}

^a International Center for Materials Nanoarchitectonics, National Institute for

Materials Science, 1-1 Namiki, Tsukuba, Ibaraki 305-0044, Japan

^b Department of Materials Science and Engineering, Graduate School of Pure and

Applied Sciences, University of Tsukuba, 1-1-1 Tennodai, Tsukuba, Ibaraki 305-8571,

Japan

*Corresponding Author

E-mail: Guoping.Chen@nims.go.jp

Fax: +81-29-860-4706; Tel: +81-29-860-4496;

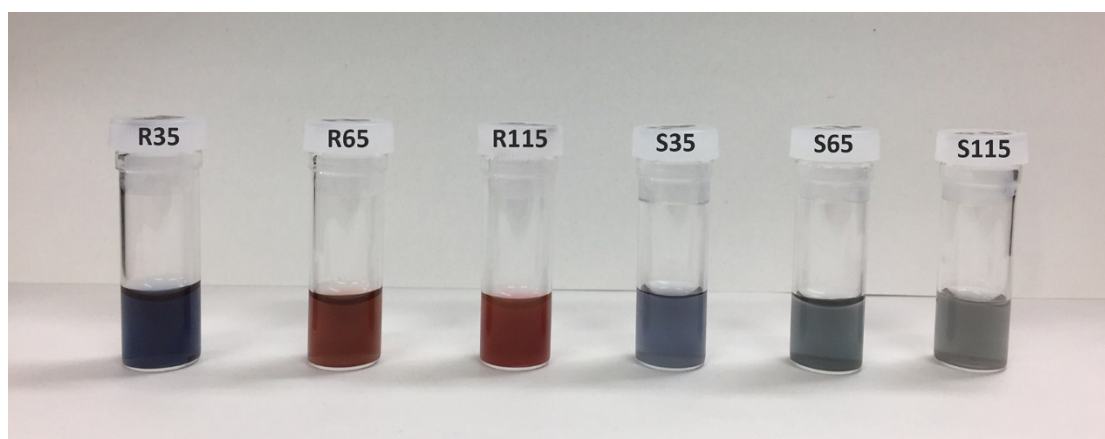


Fig. S1 Gross appearance of R35, R65, R115, S35, S65 and S115.