

Supplementary Information

Temperature-dependent shape-responsive fluorescent nanospheres for image-guided drug delivery

Shawn He,¹ George Tourkakis,¹ Oleg Berezin,² Nikolay Gerasimchuk,³ Hairong Zhang,¹
Haying Zhou,¹ Asaf Izraely,⁴ Walter J. Akers,¹ Mikhail Y. Berezin^{1,5*}

¹Department of Radiology, Washington University School of Medicine, St. Louis, MO,
USA

²Mobichem Scientific Engineering, LTD, Israel

³Chemistry Department, Missouri State University, Springfield, MO, USA

⁴Albaad Massuot Yitzhak Ltd, Israel

⁵Institute of Materials Science & Engineering, Washington University, St. Louis, MO

*Contact author: berezinm@mir.wustl.edu

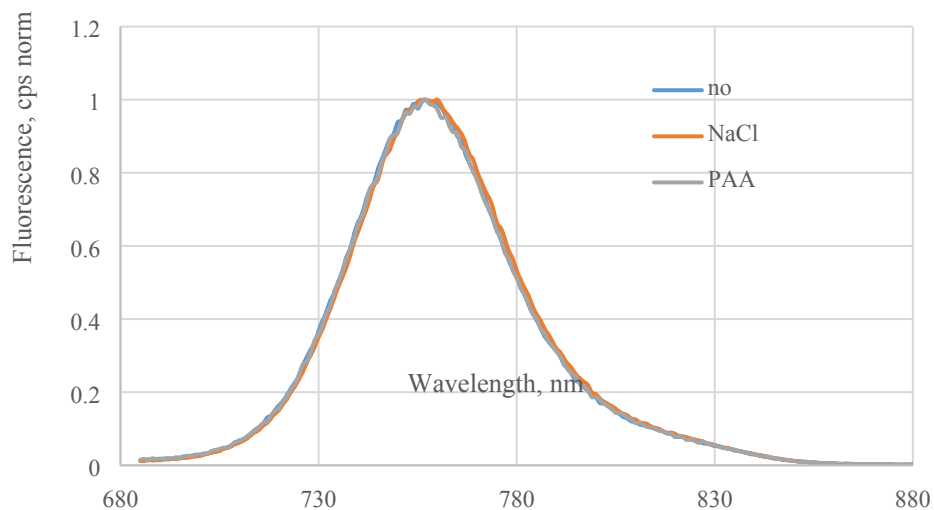


Figure S1 Emission of HITC in water, after addition of NaCl (1.6 w. %) and polyacrylic acid (PAA) (6 w.%). No shift in the emission is observed.

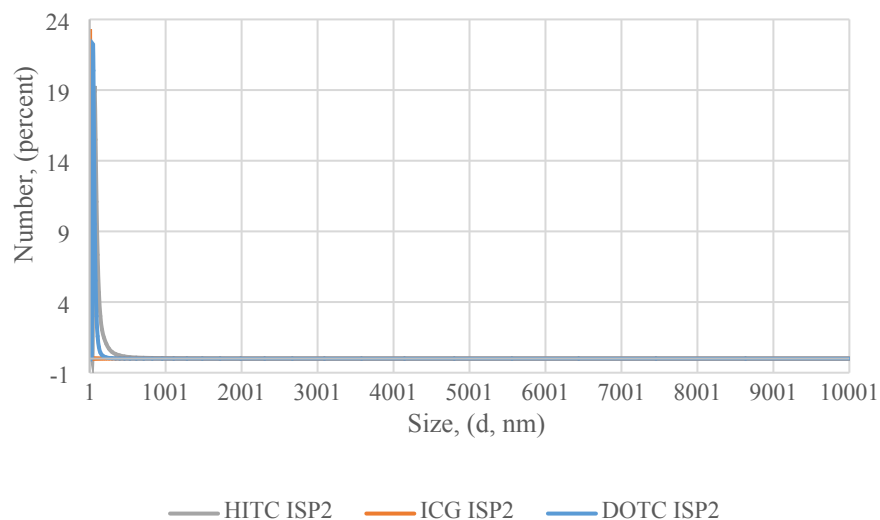
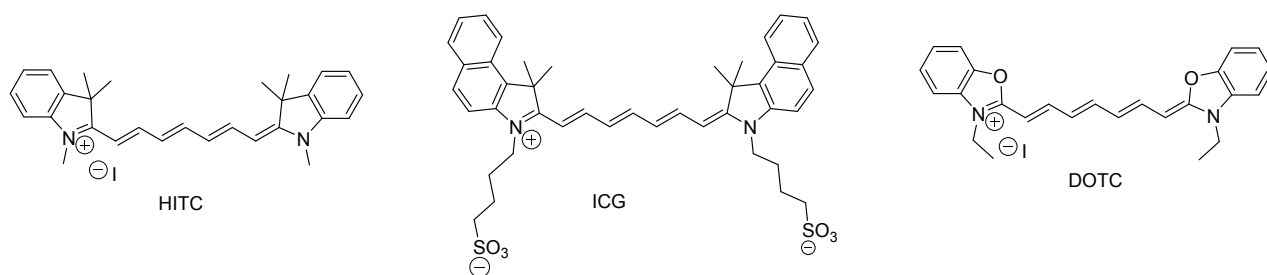


Figure S2 Structures and nanoparticles size distribution formed by HITC, ICG and DOTC in water, room temp.

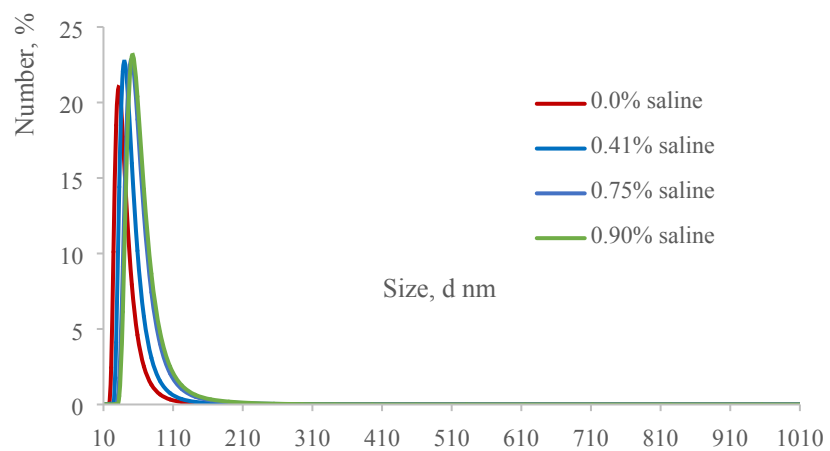


Figure S3 Preformed HITC-ISP2 nanoparticles treated with NaCl(aq) solution at different saline concentrations, room temperature.

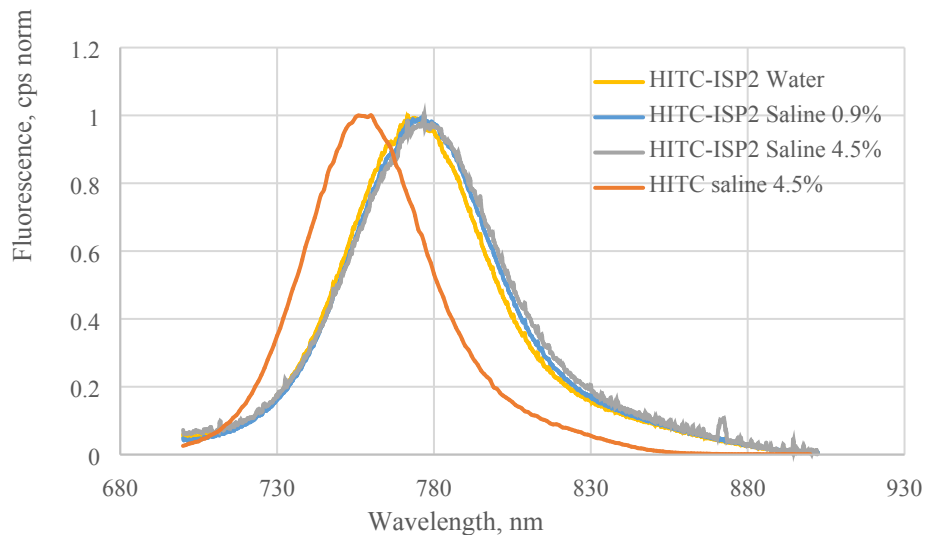


Figure S4 Emission of HITC-ISP2 in water and saline as compared to HITC in saline. The spectra clearly show no release of the dye in the presence of salt even at high concentration.

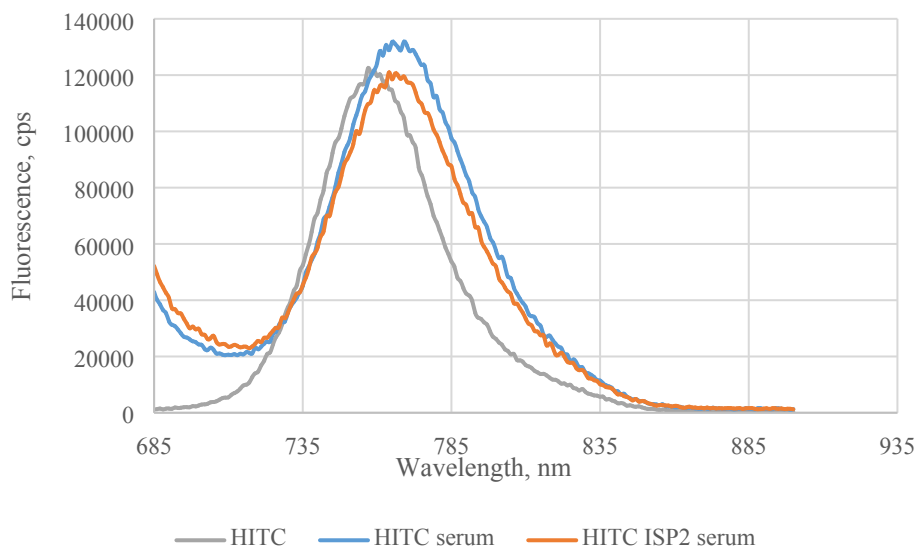


Figure S5 Fluorescence emission of HITC and HITC-ISP2 in the presence of serum (20% Fetal bovine serum in water)

Table S1 fluorescence anisotropy of HITC and HITC-ISP2 in serum

Sample	Emission max, nm	Fluorescence anisotropy	St. error, % (n=10)
HITC in water	757	0.140	8.28
HITC in serum	768	0.212	4.84
HITC-ISP2 in water	775	0.319	1.84
HITC-ISP2 in serum	766	0.287	4.49

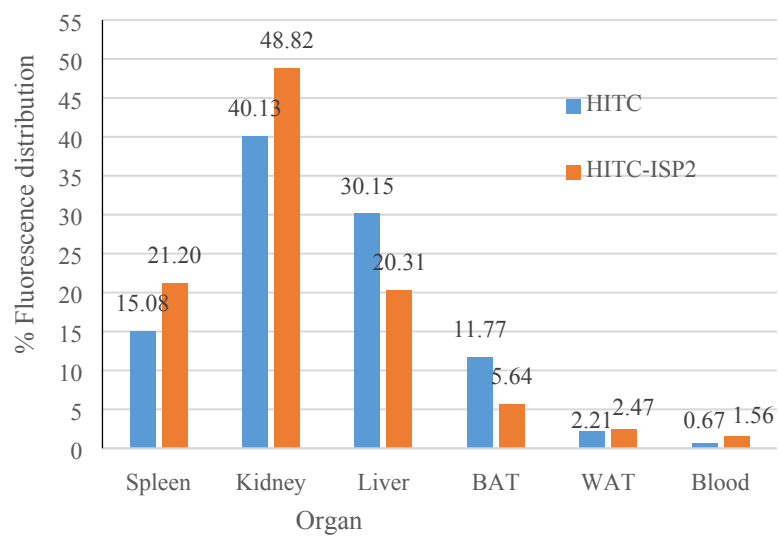


Figure S6 Biodistribution of HITC and HITC-ISP2 fluorescent nanoparticles 1 hour post injection.