

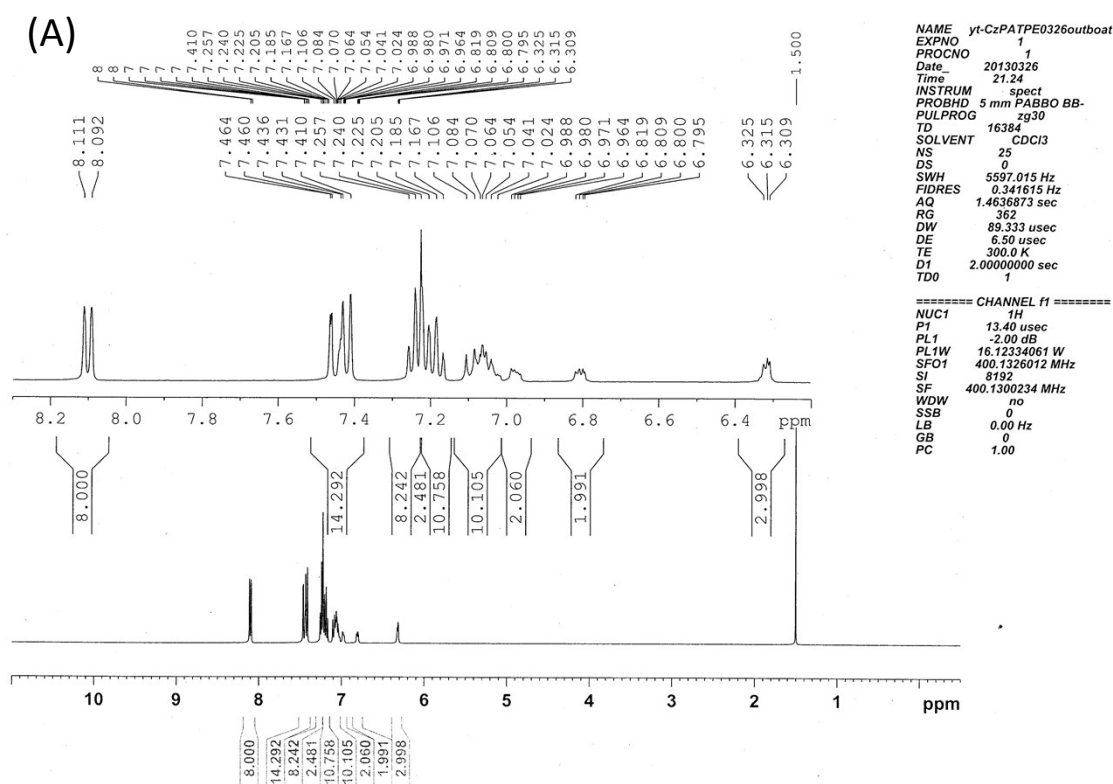
Electronic Supplementary Information (ESI)

## The First Aggregation-Induced Emission Fluorophore as a Solution Processed Host Material in Hybrid White Organic Light-Emitting Diodes

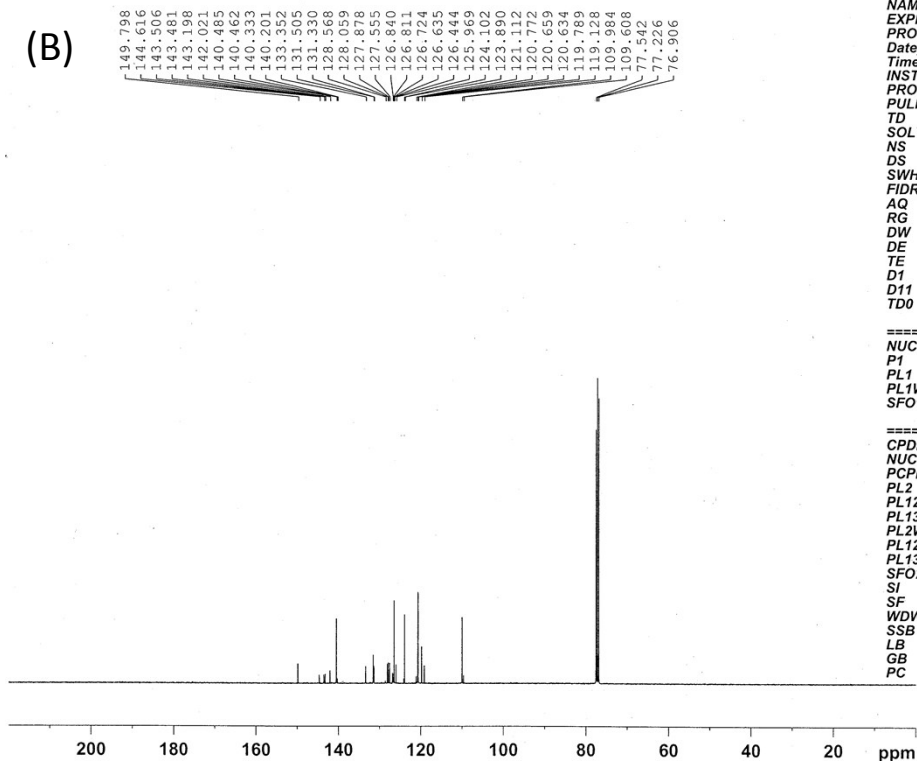
Yi-Ting Lee,<sup>ab</sup> Yung-Ting Chang,<sup>a</sup> Chin-Ti Chen,<sup>\*a</sup> and Chao-Tsen Chen<sup>\*b</sup>

<sup>a</sup> Institute of Chemistry, Academia Sinica, Taipei, Taiwan 11529, Republic of China. \*E-mail: chintchen@gate.sinica.edu.tw; Fax: +886 2 27831237; Tel: +886 2 27898542

<sup>b</sup> Department of Chemistry, National Taiwan University, Taipei, Taiwan 10617



(B)

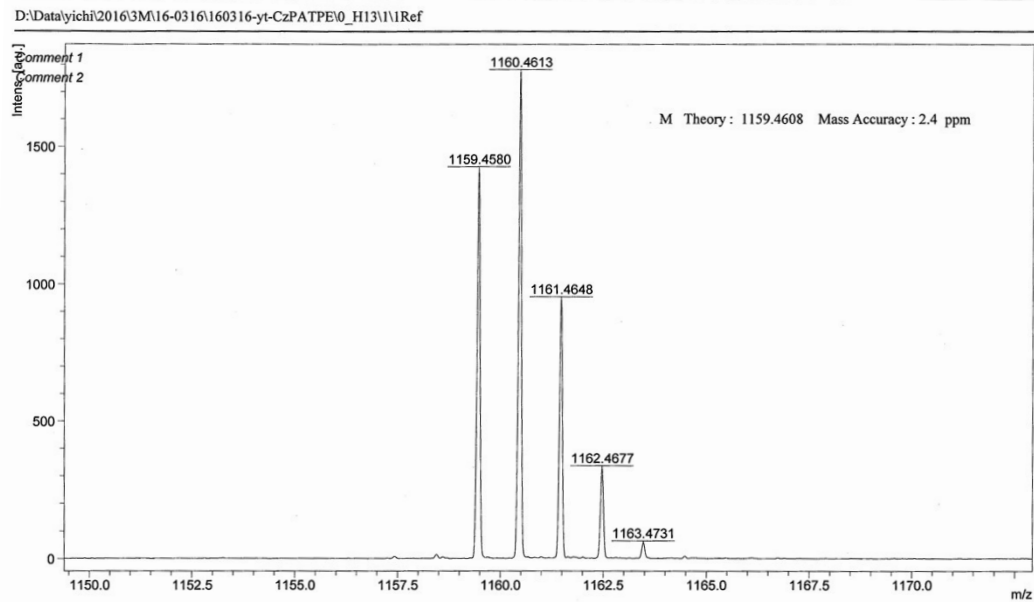


NAME yt-TPECzPA  
EXPNO 1  
PROCNO 1  
Date\_ 20130320  
Time 7.14  
INSTRUM spect  
PROBHD 5 mm PABBO BB-  
PULPROG zgpg30  
TD 32768  
SOLVENT CDCl3  
NS 10000  
DS 0  
SWH 23148.148 Hz  
FIDRES 0.706425 Hz  
AQ 0.7078388 sec  
RG 2050  
DW 21.600 usec  
DE 8.50 usec  
TE 300.0 K  
D1 2.0000000 sec  
D11 0.0300000 sec  
TD0 1

===== CHANNEL f1 =====  
NUC1 13C  
P1 9.60 usec  
PL1 -2.00 dB  
PL1W 55.33689499 W  
SFO1 100.6238359 MHz

===== CHANNEL f2 =====  
CPDPRG2 waltz16  
NUC2 1H  
PCPD2 90.00 usec  
PL2 -2.00 dB  
PL12 14.20 dB  
PL13 17.20 dB  
PL2W 16.12334061 W  
PL12W 0.38677201 W  
PL13W 0.19384515 W  
SFO2 400.1326011 MHz  
SI 16384  
SF 100.6127476 MHz  
WDW no  
SSB 0  
LB 0.00 Hz  
GB 0  
PC 1.00

(C)



**Fig S1.** (A)  $^1\text{H}$  NMR, (B)  $^{13}\text{C}$  NMR, and (C) HR-MALDI-TOF Mass spectra of **CzPATPE**