

Electronic Supporting Information for

Integration of Patterned Conductive Carbon Nanotube Thin Film with Insulating Hydrophobic Polymer Carpet into Robust 2D Janus Hybrid Flexible Electronics

Peng Xiao,^a Jincui Gu,^a Jiang He,^a Shuai Wang,^a Jiawei Zhang,^{*a} Youju Huang,^a Shiao-Wei Kuo^b and Tao Chen^{*a}

^a Ningbo Institute of Material Technology and Engineering, Key Laboratory of Graphene Technologies and Applications of Zhejiang Province, Chinese Academy of Science, Zhongguan West Road 1219, 315201, Ningbo, China.

^b Department of Material and Optoelectronic Science, National Sun Yat-Sen University, 804, Kaohsiung, Taiwan



Fig. S1 Photo of ethanol-assisted dispersed CNTs suspensions.

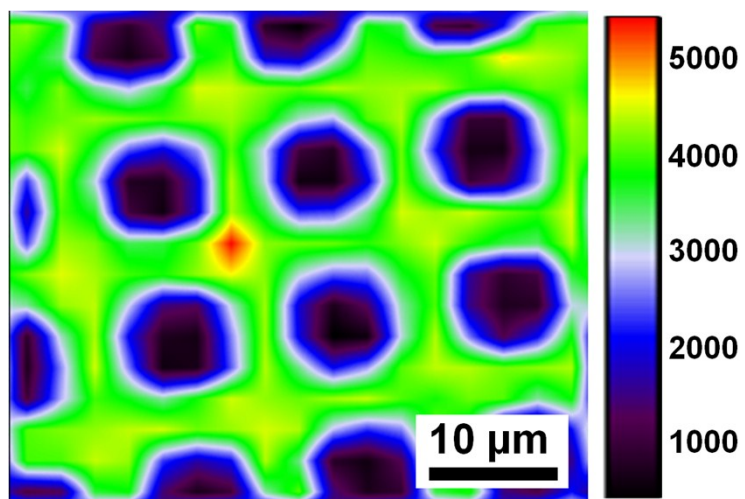


Fig. S2 Raman mapping information of the grid patterns. The color gradations represent the value of I_G , which are collected from area of $45 \times 45 \mu\text{m}$.

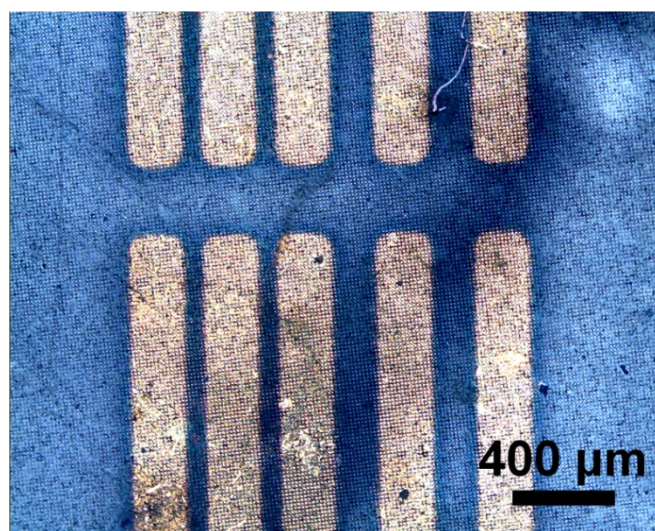


Fig. S3 Optical image of the freestanding 2D Janus thin film transferred onto the patterned Au electrodes surface.

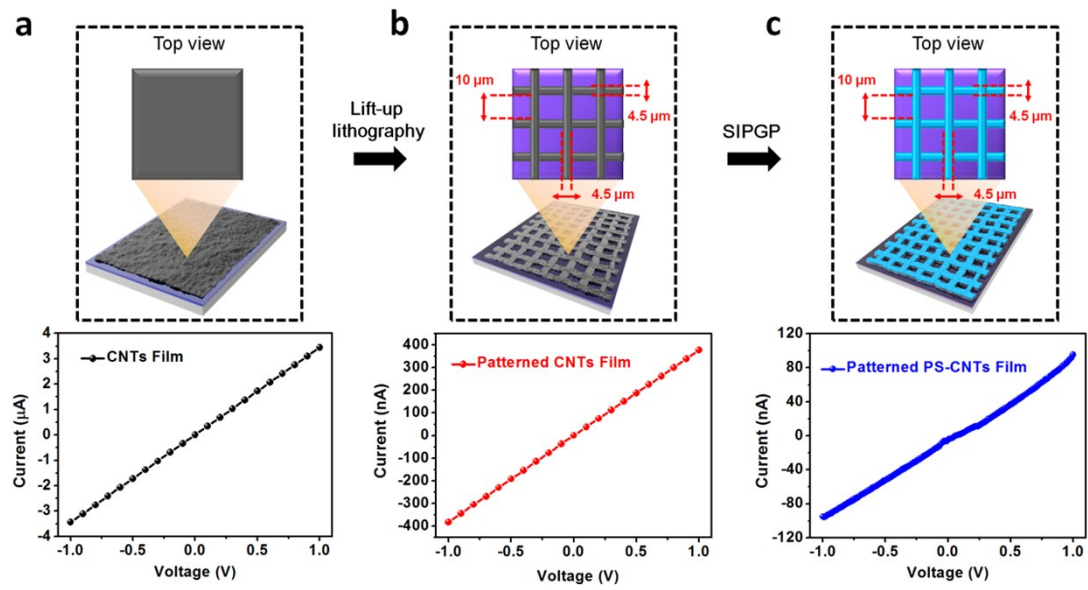


Fig. S4 Current-Voltage curves. a) The as-prepared LB CNTs film, b) The patterned LB CNTs film, d) Polymer grafted patterned CNTs film.

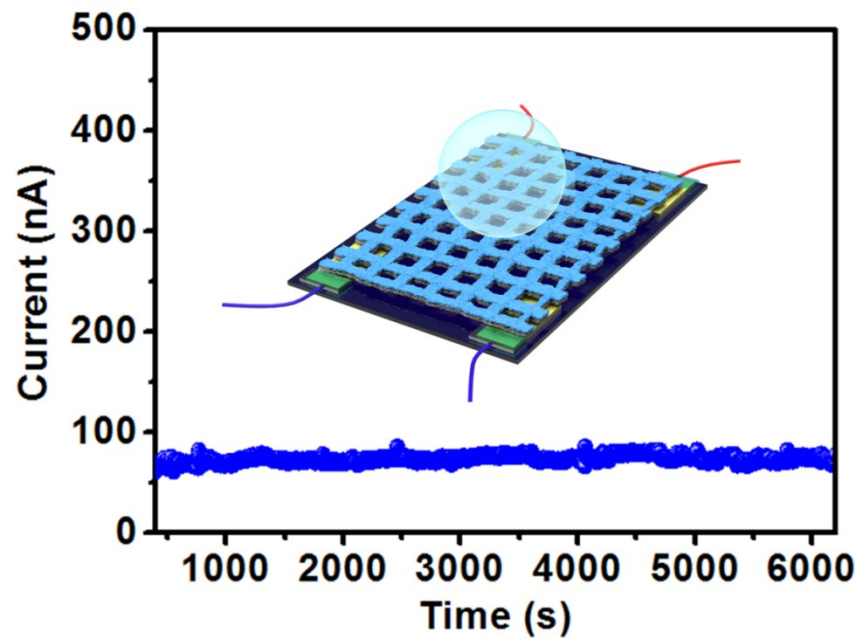


Fig. S5 Current vs. time curve of the Janus hybrid exposed to water in the long range