

### *Supporting Information*

Lanthanide coordination polymer nanoparticles as turn-on fluorescent sensing platform for simultaneous detection of histidine and cysteine

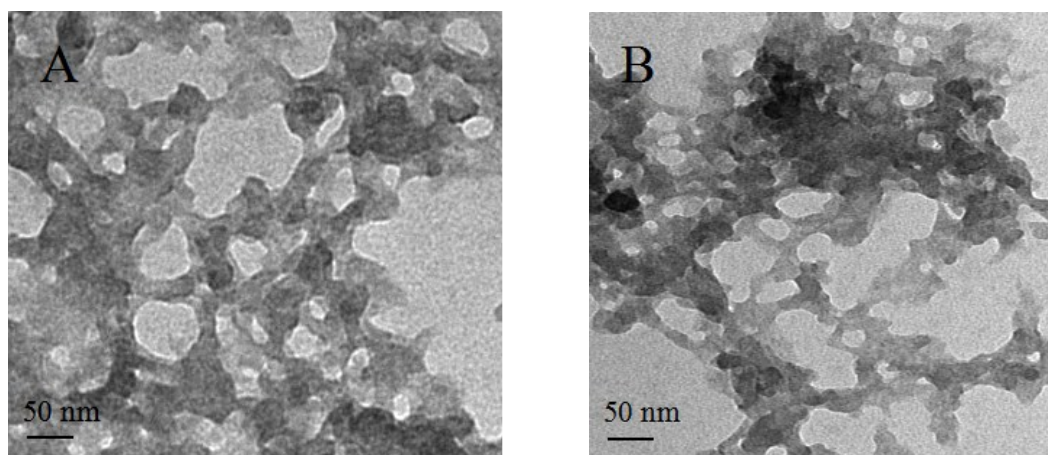


Figure. S1. TEM images of (A) AMP-Tb and (B) Cu/SSA/AMP-Tb.

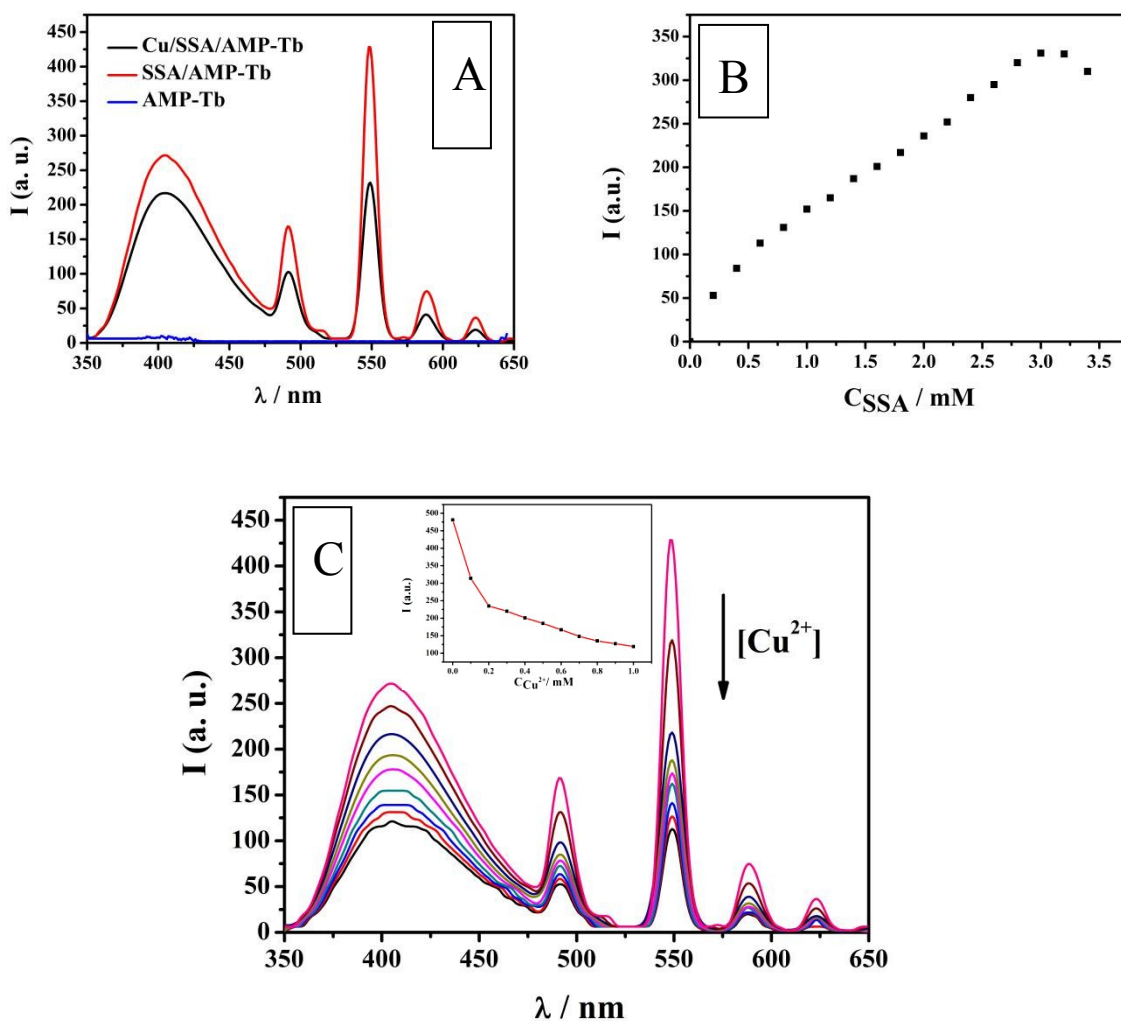


Figure. S2. (A) Emission spectra ( $\lambda_{ex} = 328$  nm) of AMP-Tb, SSA/AMP-Tb and Cu/SSA/AMP-Tb suspension. (B) Plot of the fluorescence intensity of AMP-Tb vs SSA concentration in HEPES buffer (0.1 M, pH 7.4) (C) Fluorescent responses of SSA/AMP-Tb suspension by adding  $Cu^{2+}$  ([SSA]=3.0 mM). Inset: The dependence of the fluorescence intensity of SSA/AMP-Tb on the concentration of  $Cu^{2+}$ .

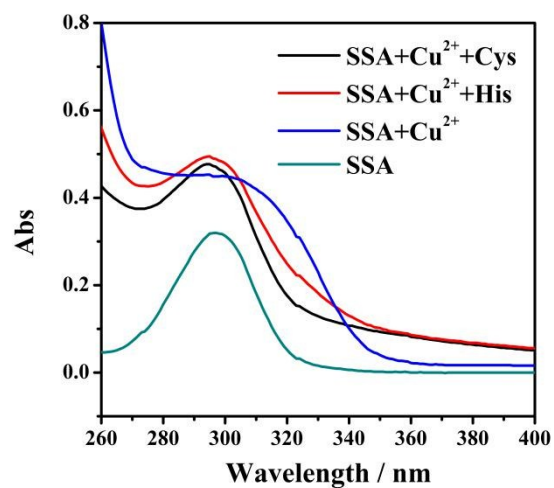


Figure. S3. UV-vis absorption spectra of the mixtures prepared by separate addition of SSA, SSA+Cu<sup>2+</sup>, SSA+Cu<sup>2+</sup>+His and SSA+Cu<sup>2+</sup>+Cys in HEPES buffer (0.1 M, pH 7.4), respectively.