

An update on MALDI Mass Spectrometry based technology for the analysis of fingerprints - stepping into operational deployment

S. Francese^{1*}, R. Bradshaw¹, N. Denison²

¹Centre for Mass Spectrometry Imaging, Biomolecular Research Centre, Sheffield Hallam University, Sheffield, UK, S1 1WB

²Identification Services Yorkshire and the Humber Region, West Yorkshire Police, Wakefield, UK WF27UA.

* Corresponding author: Simona Francese, email: s.francese@shu.ac.uk

Supplementary Information

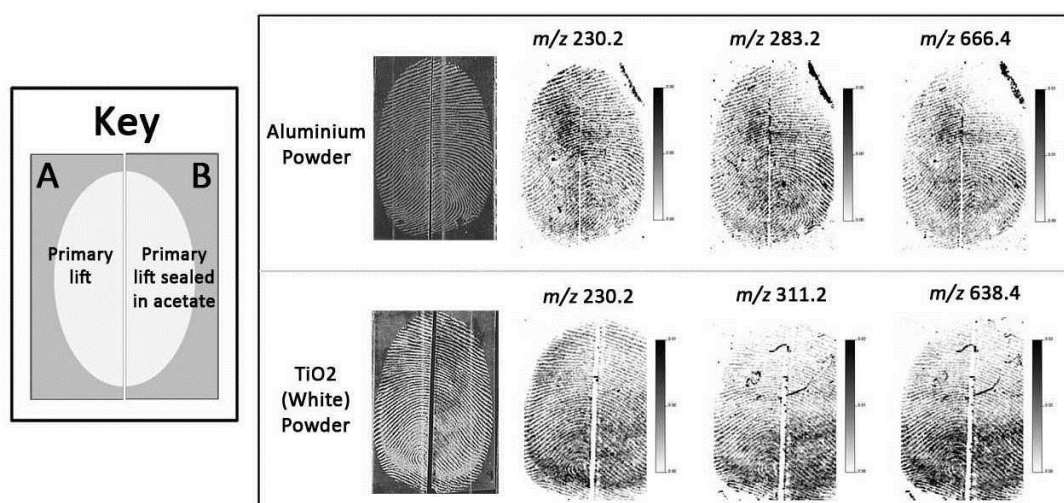


Figure S1. Investigation of acetate backing interference within the MALDI MSI analysis of primary lifts. Fingerprint enhanced with either Aluminium or White powder were lifted and then split in halves (A and B). Half A was prepared and submitted to MALDI MSI; fingerprint half B was stuck on an acetate backing sheet which was then peeled off and the tape lifted mark B was then also prepared and submitted to MALDI MSI. Both halves of the marks yield the same quality image, suggesting that the acetate backing sheet does not affect the recovery of ridge detail/chemical information.