

Fig. S1 Calibration plots for quantitation of GS peptide with Phos-tag acrylamide gel under optimized experimental conditions.

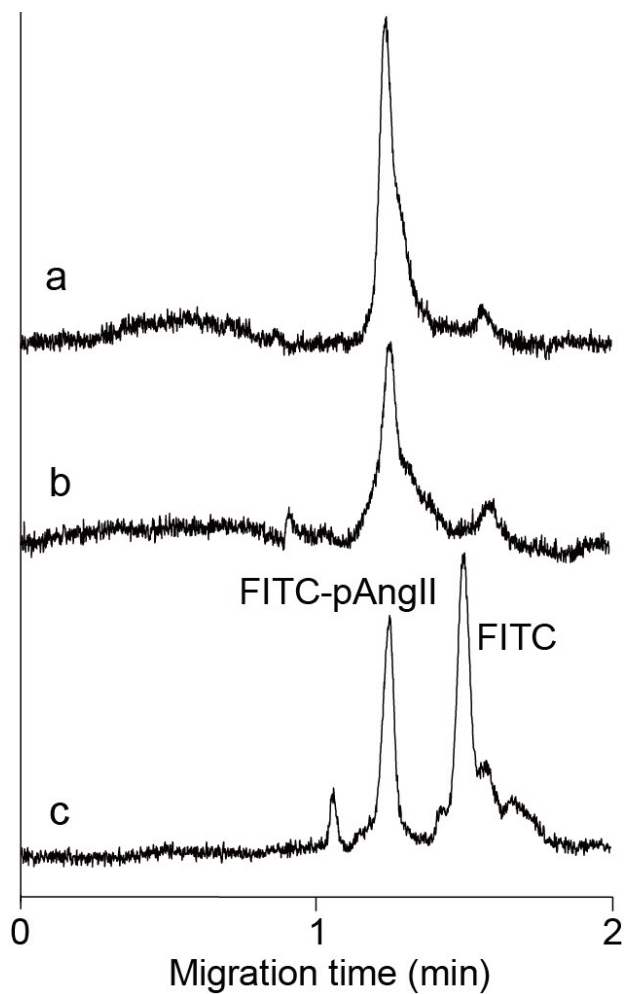


Fig. S2. Electrophoretic separation of 10^{-8} M FITC-labeled phosphoangiotensin II (FITC-pAng II) pre-concentrated with the Phos-tag polyacrylamide gel using manganese(II) (a) and zinc(II) (b) for online concentration and 10^{-6} M FITC-pAng II analyzed by the pinched injection without pre-concentration (c). The analytical conditions were the identical to those described for Fig. 4.