

### Supplementary Materials

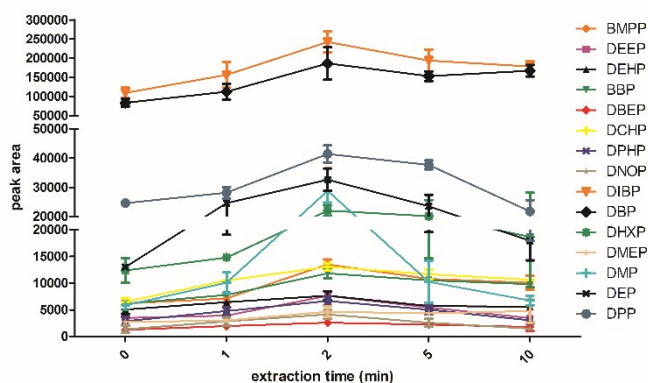


Fig. S1 Effect of the extraction time on the extraction efficiency in DLLME Extraction conditions: water sample volume, 5.0 mL; extraction solvent (carbon tetrachloride), 50  $\mu$ L; disperser solvent (methanol) volume, 1.0 mL; concentration of each phthalate ester, 0.02  $\mu$ g mL<sup>-1</sup>.

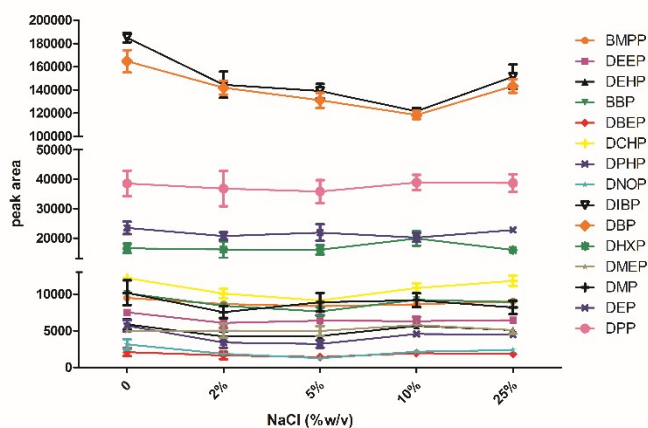


Fig. S2 Effect of salt addition on the extraction efficiency in DLLME Extraction conditions: water sample volume, 5.0 mL; extraction solvent (carbon tetrachloride), 50  $\mu$ L; disperser solvent (methanol) volume, 1.0 mL; concentration of each phthalate ester, 0.02  $\mu$ g mL<sup>-1</sup>.